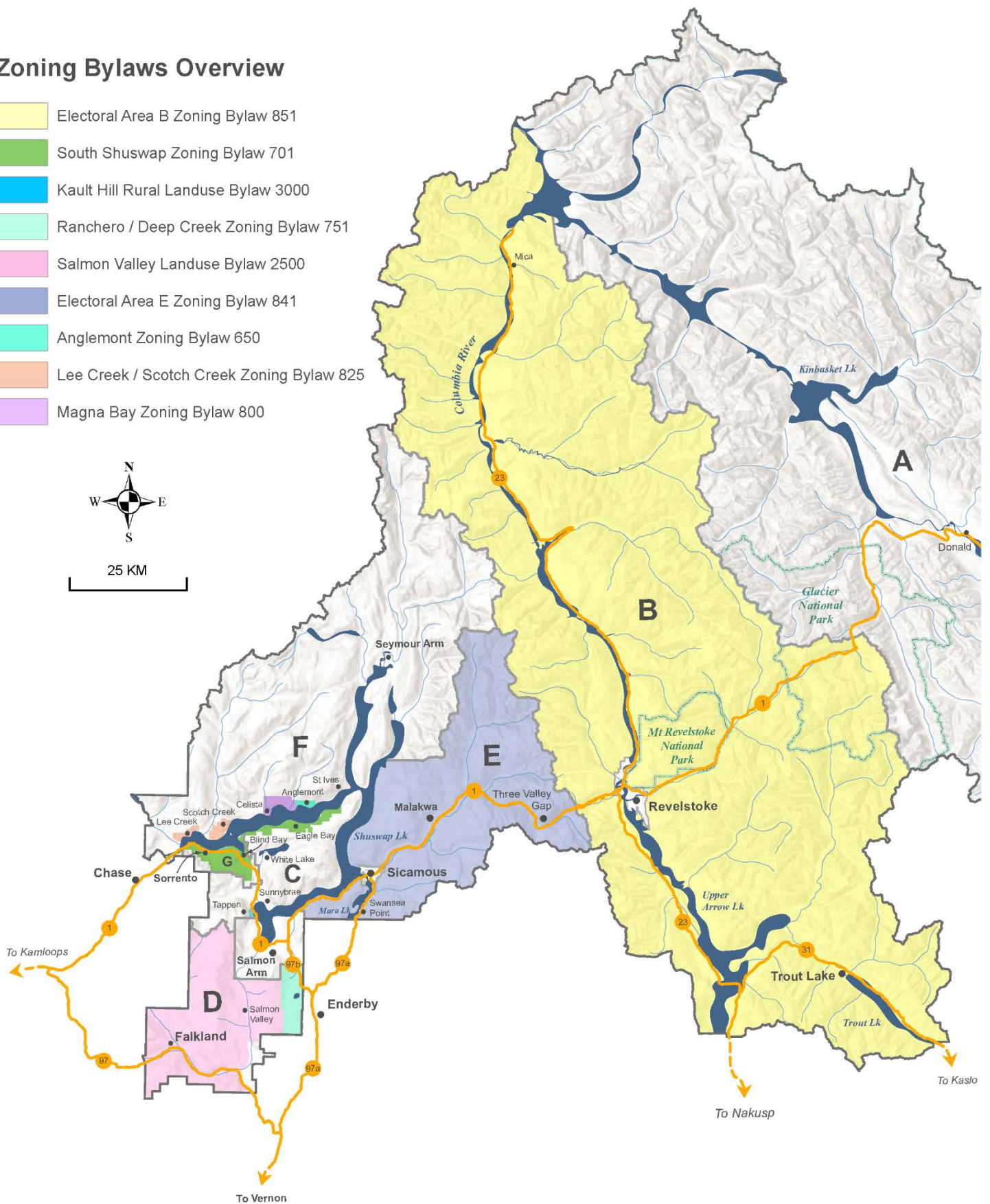


## Zoning Bylaws Overview

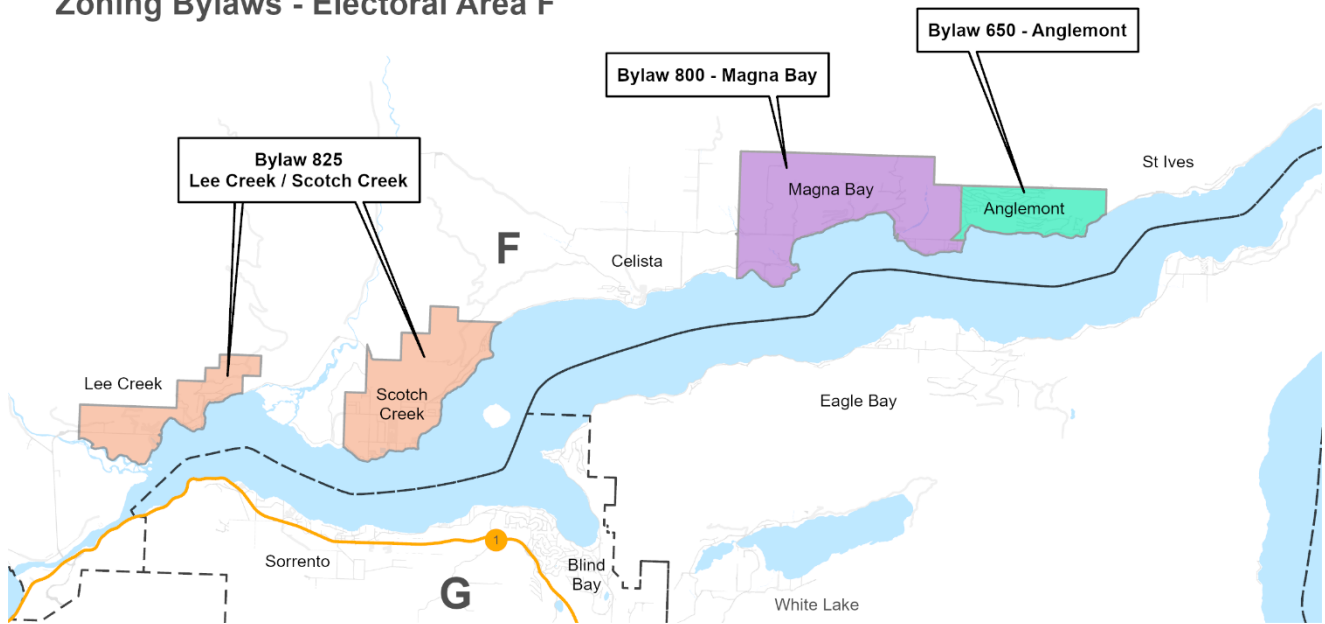
- Electoral Area B Zoning Bylaw 851
- South Shuswap Zoning Bylaw 701
- Kault Hill Rural Landuse Bylaw 3000
- Ranchero / Deep Creek Zoning Bylaw 751
- Salmon Valley Landuse Bylaw 2500
- Electoral Area E Zoning Bylaw 841
- Anglemont Zoning Bylaw 650
- Lee Creek / Scotch Creek Zoning Bylaw 825
- Magna Bay Zoning Bylaw 800



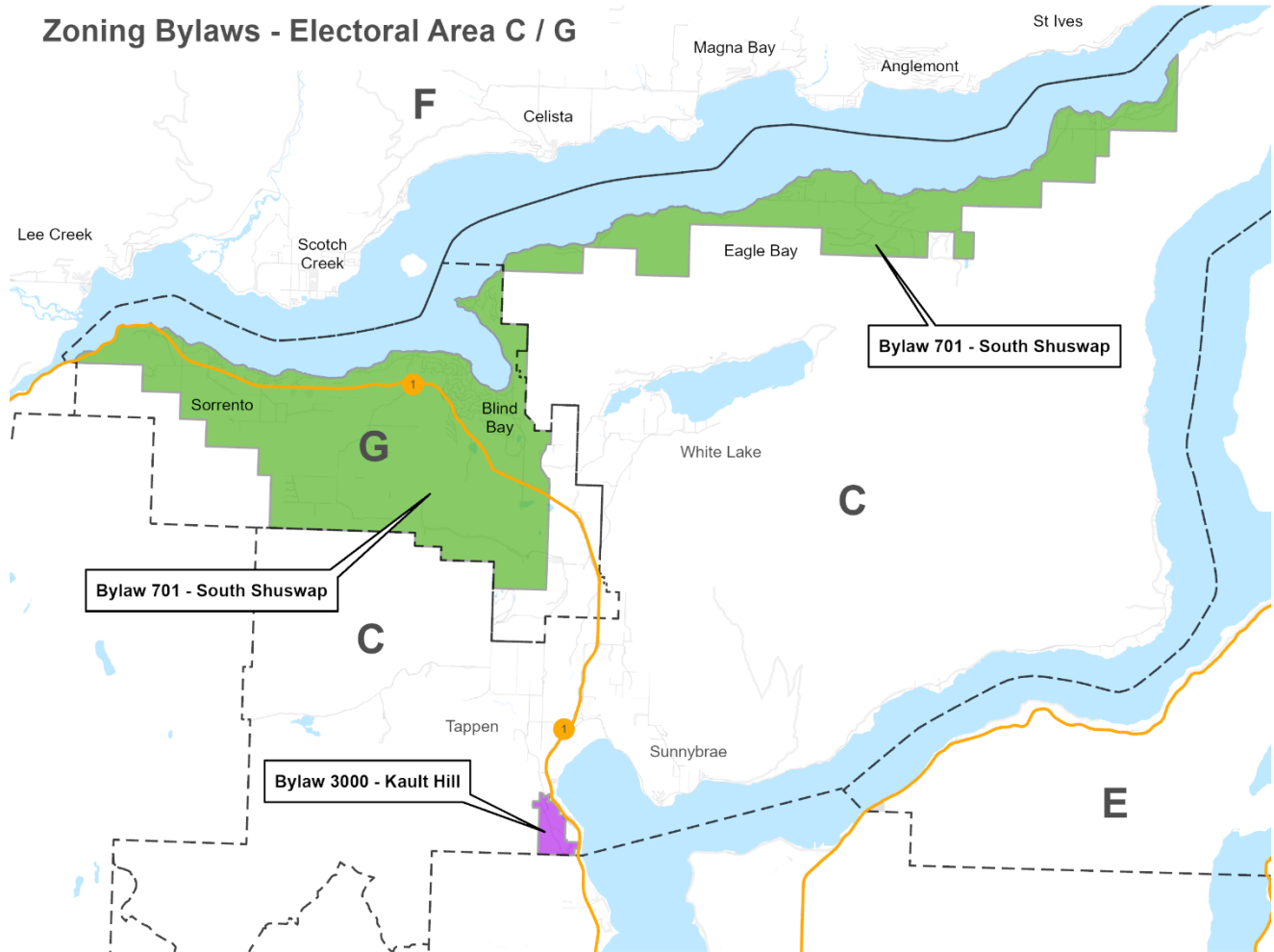
25 KM



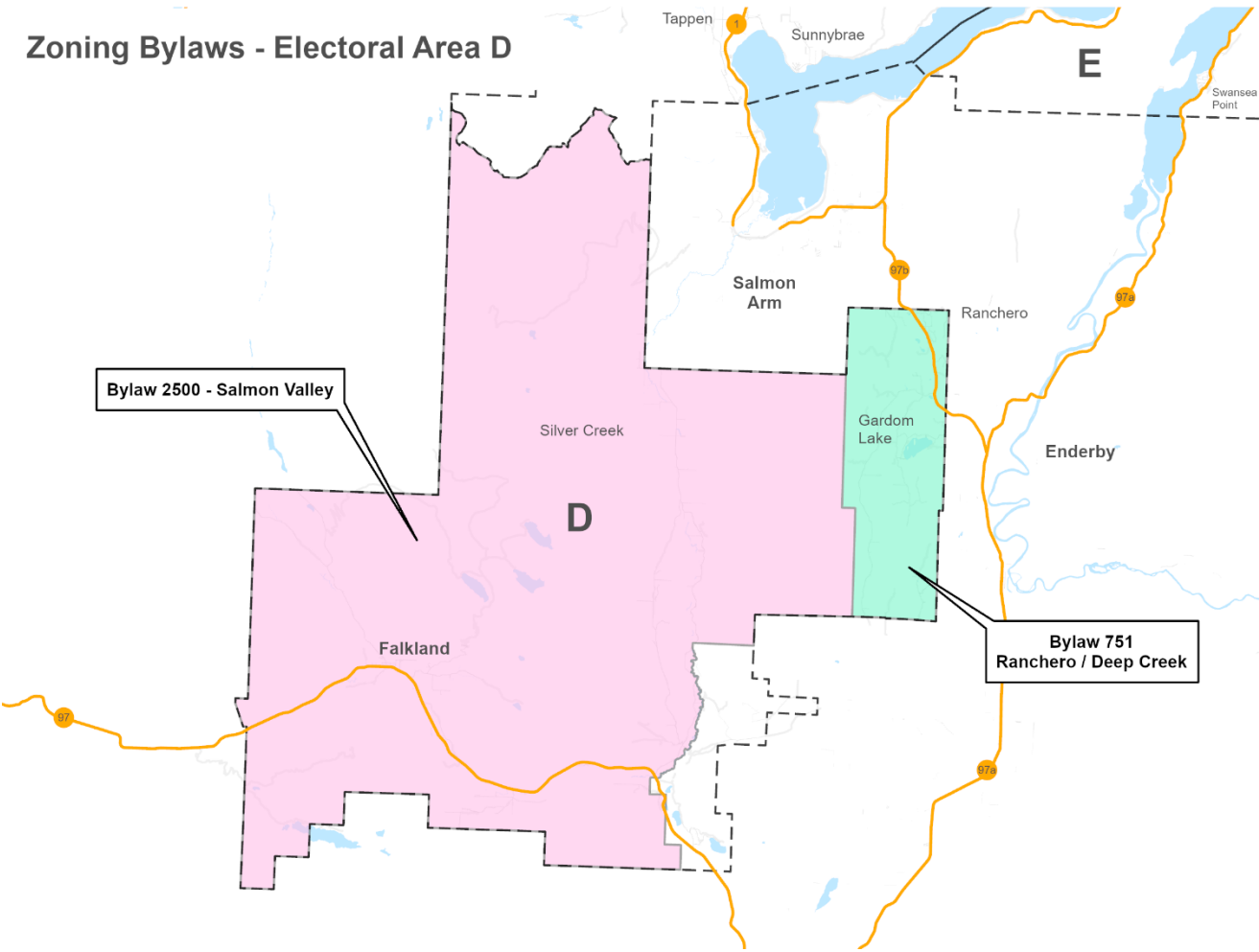
## Zoning Bylaws - Electoral Area F



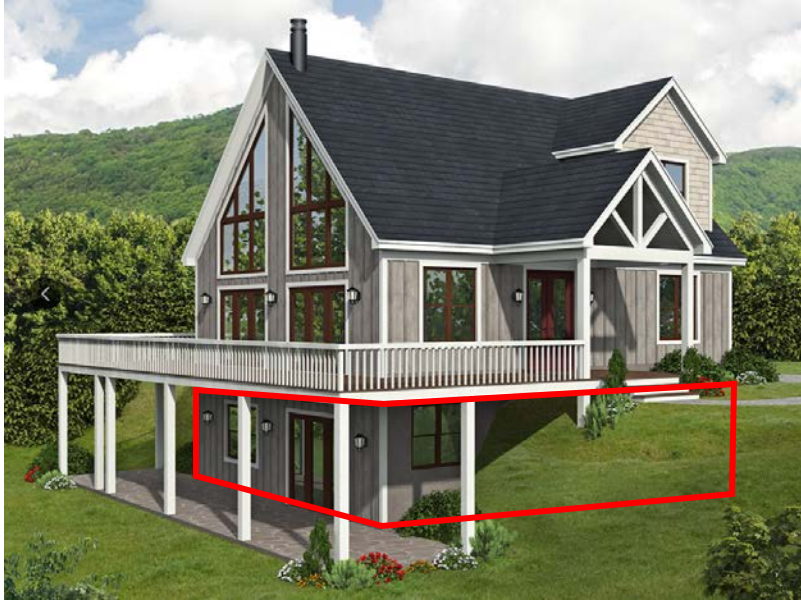
## Zoning Bylaws - Electoral Area C / G



**Zoning Bylaws - Electoral Area D**







Attached SDU in a walk out basement (basement suite)



SDU in a partial basement (basement suite)



SDU attached to main floor of a primary dwelling



Detached SDU (garden suite)



## Examples of Secondary Dwelling Units (SDU)



Two styles of SDUs above detached garages