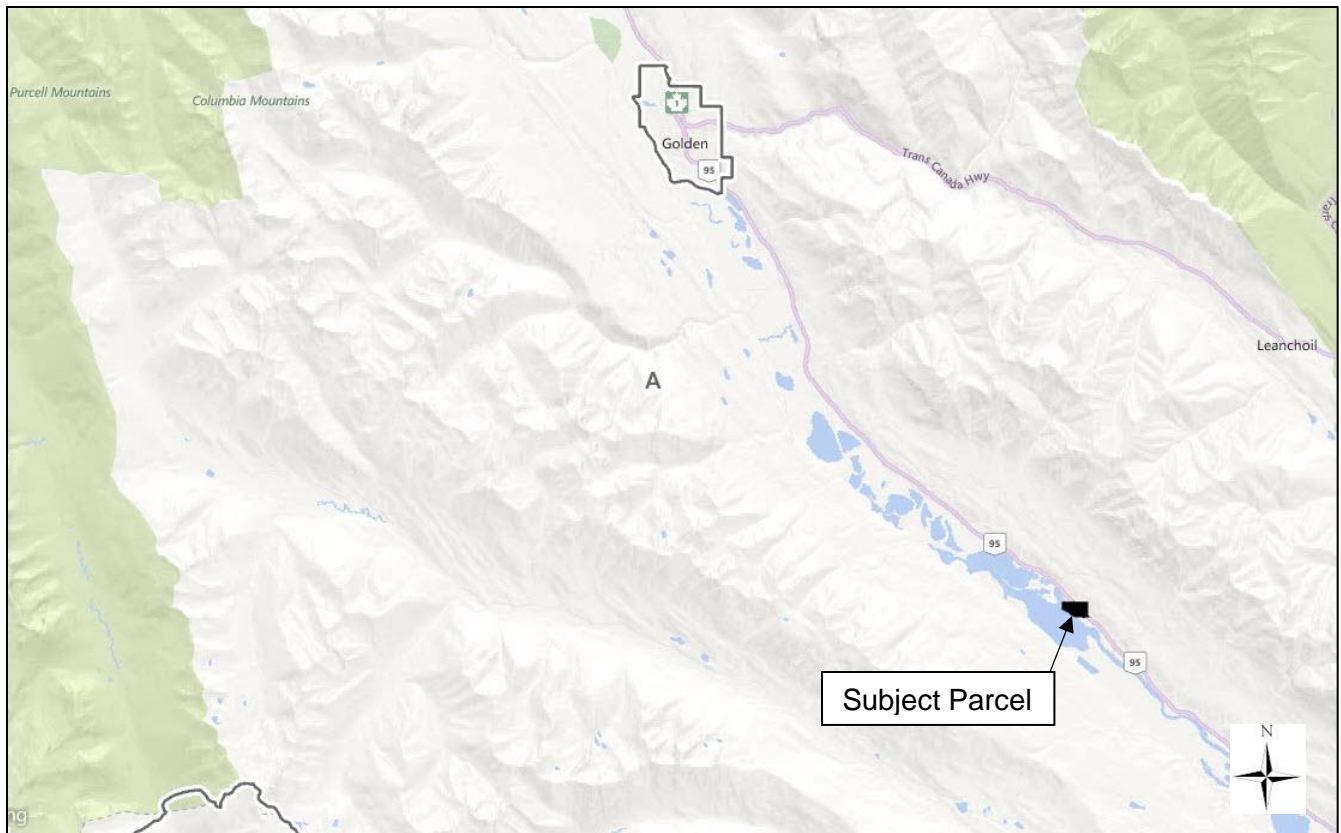
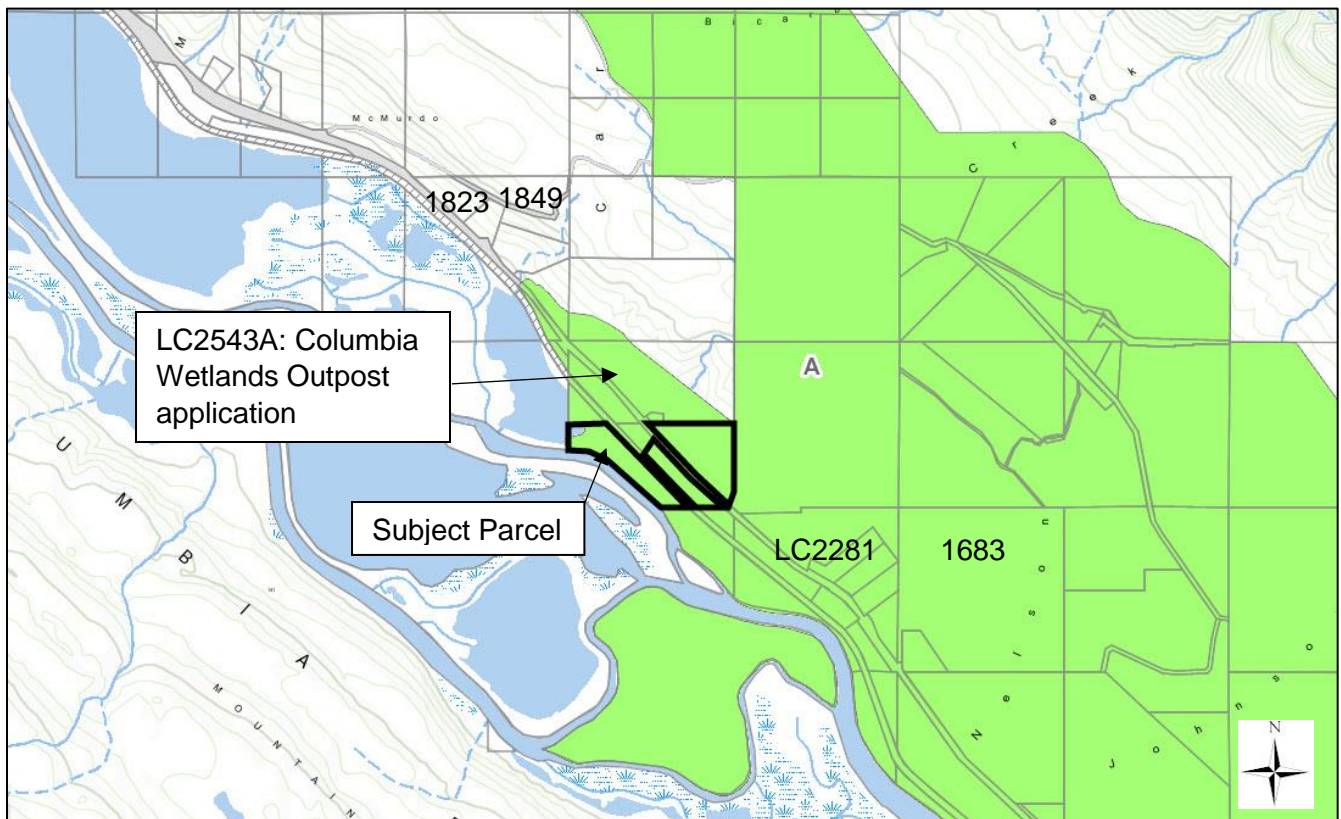


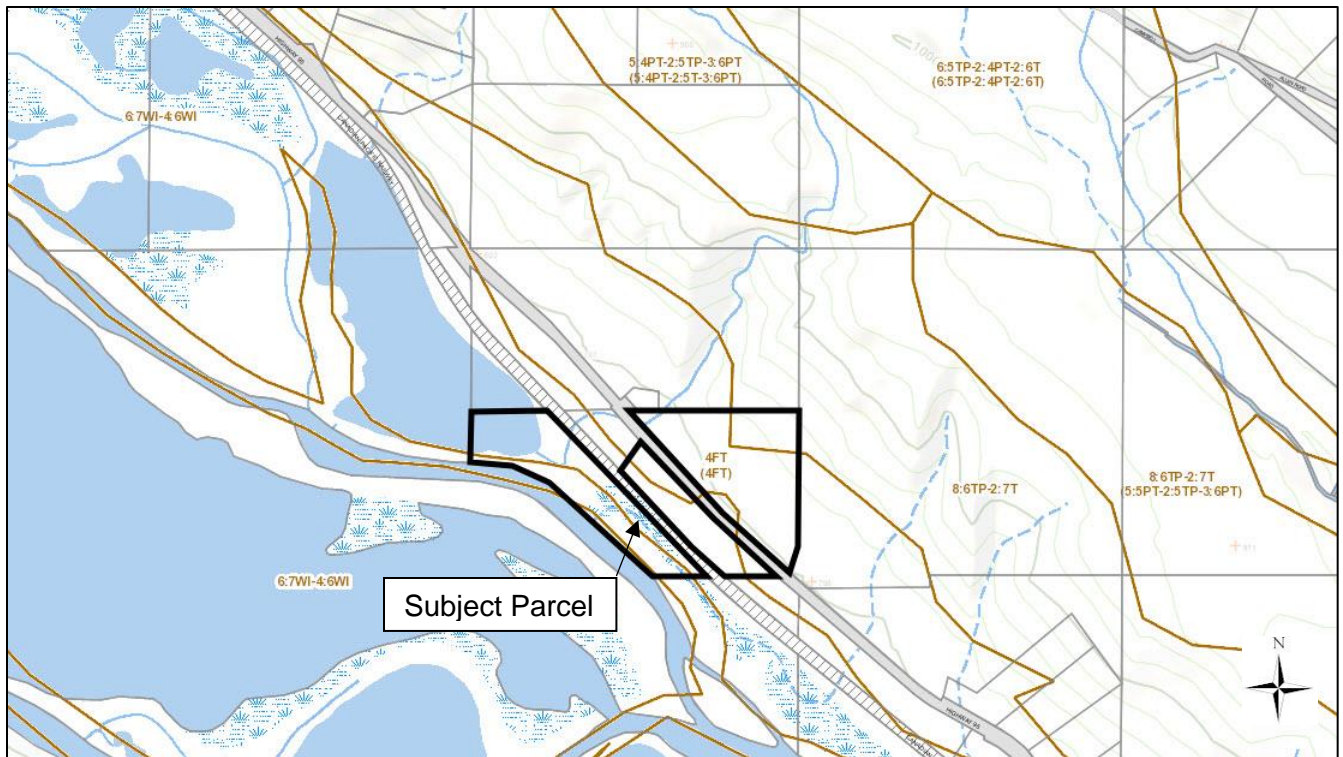
Location



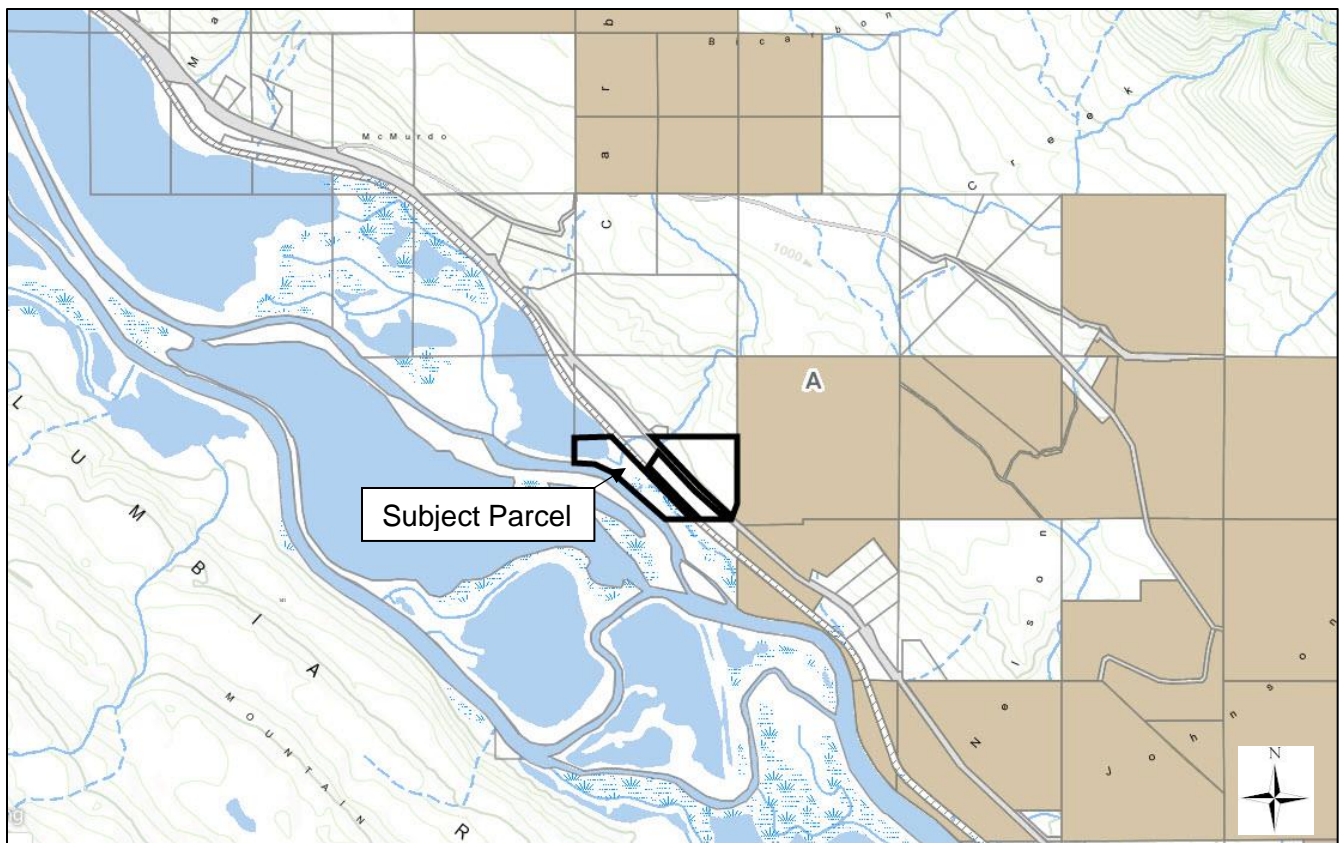
ALR History



Soils



Farm Status



Site Plan

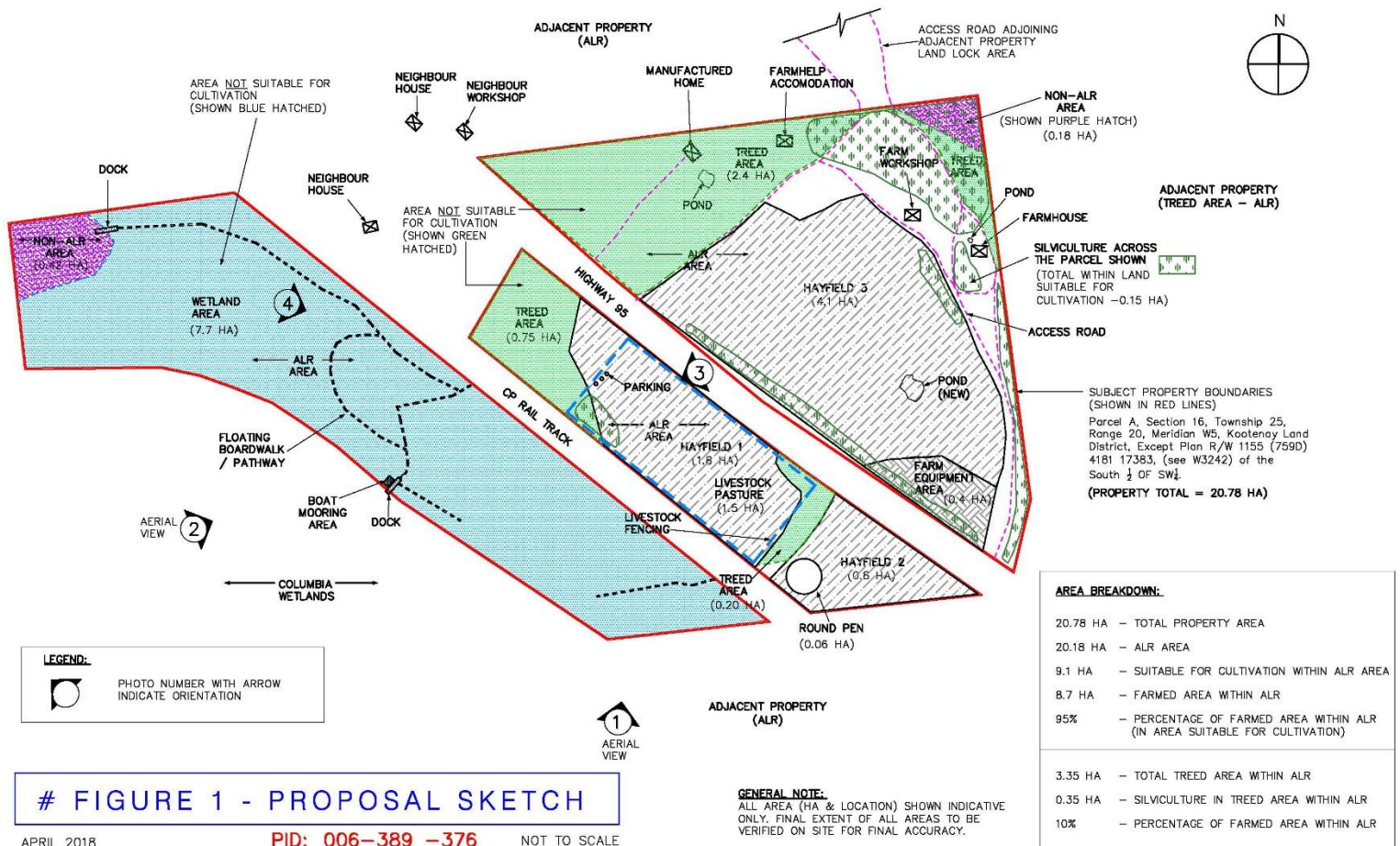


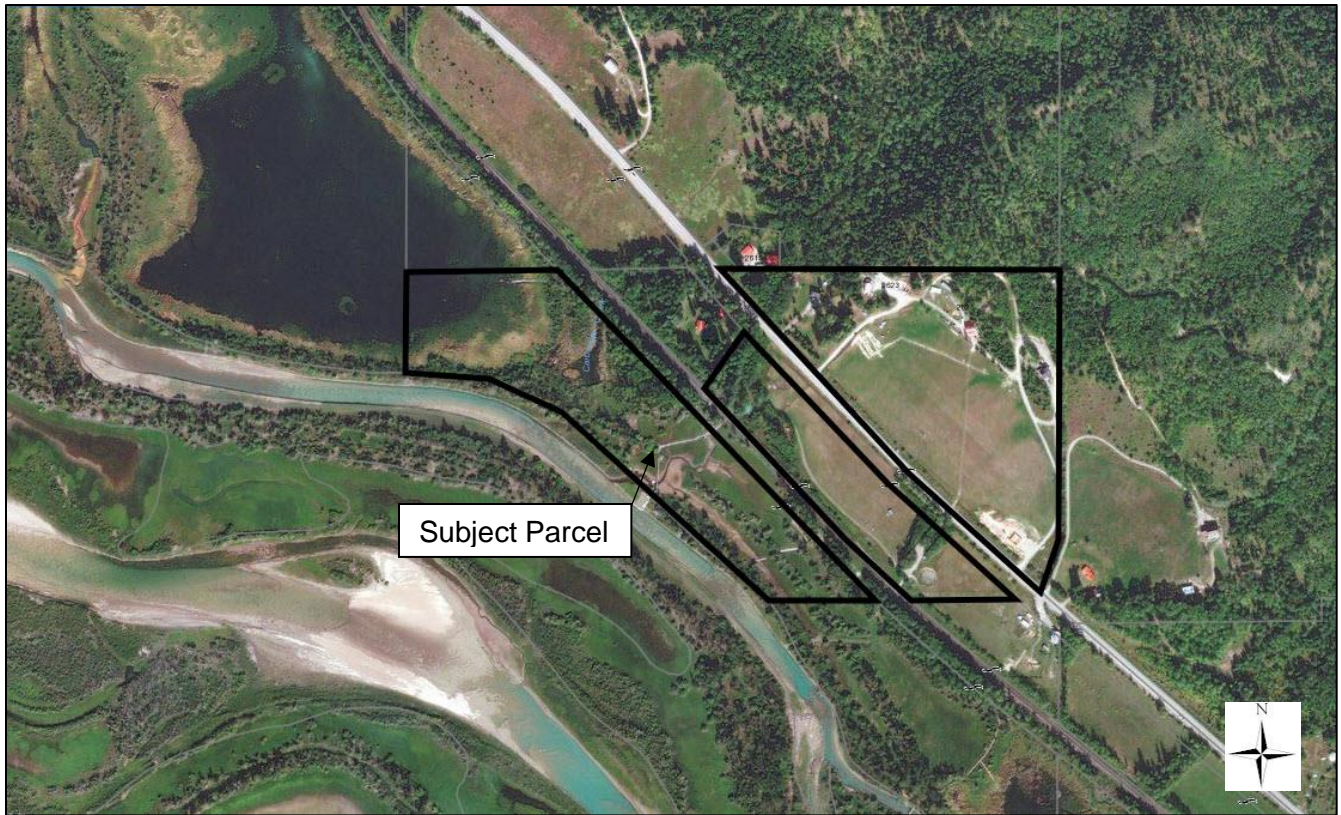
FIGURE 1 - PROPOSAL SKETCH

APRIL 2018

PID: 006-389 -376

NOT TO SCALE

Orthophotos



Photos

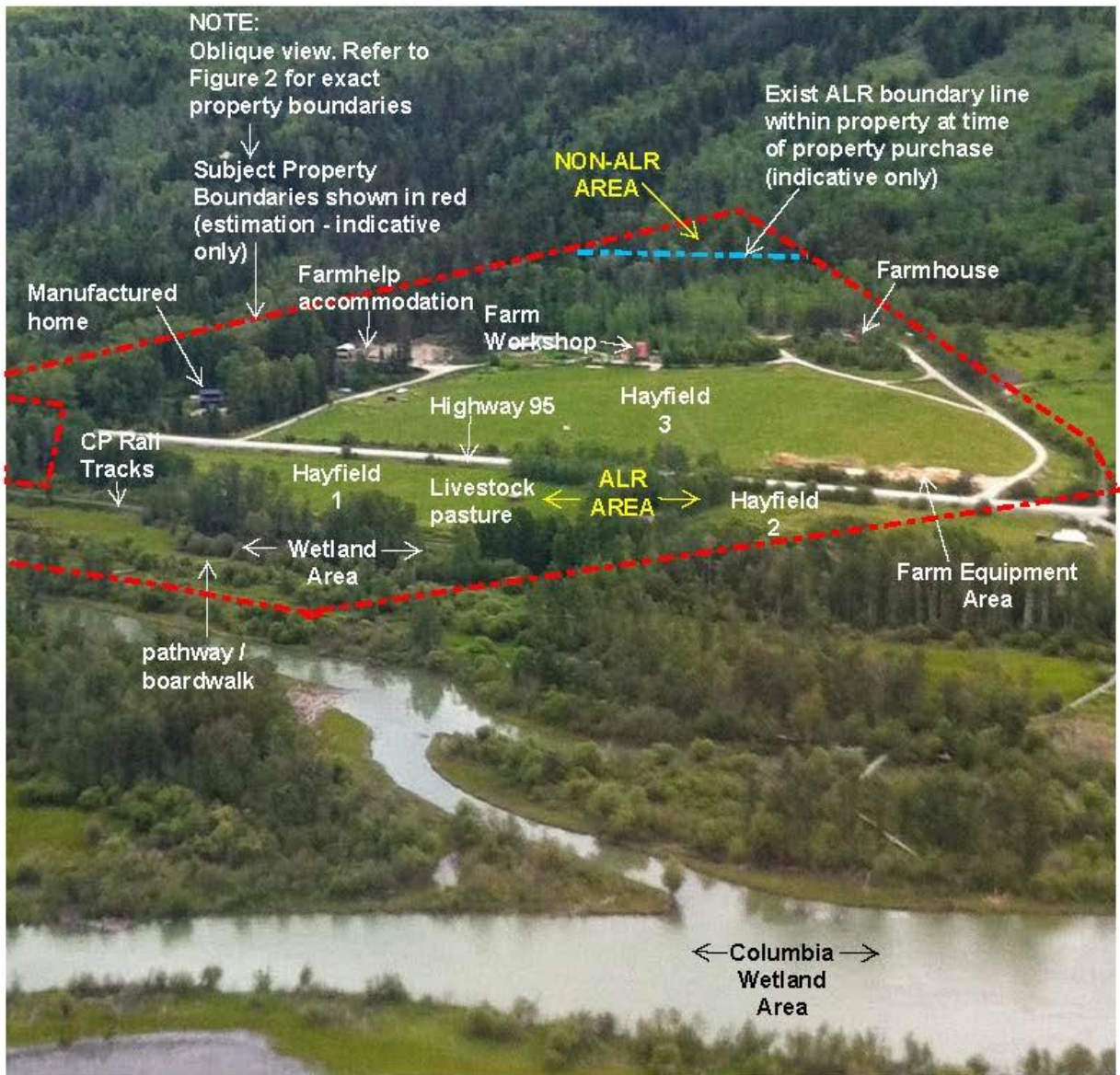


PHOTO 1 - Aerial View looking at property - Wetlands in foreground, with current farmed area in middle, and neighbour's treed area (north east) in background
- Facing North-East
- PID - 006-389-376



PHOTO 2 - Aerial View looking at property - showing Wetlands area not suitable for cultivation within Parcel 2 - due to high water fluctuation levels during the year.
- Facing East-West
- PID - 006-389-376



PHOTO 3 - Parking area surrounded by treed area to the backgrounds - showing typical day of low number parking - at parking area (see Figure 1) at current Hayfield 1 with no permanent structure or paved area proposed.
- Facing West

- PID - 006-389-376



PHOTO 4 - Small local school groups with wetlands interpretive leader learning about the ecosystem of the wetlands on existing pathway - at wetlands area of the parcel

- PID - 006-389-376