

Applications the Board has considered:

<b>Application</b>	<b>Variance requested</b>	<b>Dock Type</b>	<b>Size of Dock</b>	<b>Board result</b>
DP725-034	Width and size of dock	Floating	37.16 m <sup>2</sup> (399.99 ft <sup>2</sup> )	Denied (2015)
DP725-109	Width and size of dock	Floating	27.89 m <sup>2</sup> (300.21 ft <sup>2</sup> )	Issued (2017)
DP725-137	Width and size of dock	Floating	27.87 m <sup>2</sup> (300 ft <sup>2</sup> )	Issued (2018)
BL900-16	Width and size of dock	Fixed	52.3 m <sup>2</sup> (562.95 ft <sup>2</sup> )	Adopted (2017)
BL900-19	Width and size of dock	Fixed	45.36 m <sup>2</sup> (488.25 ft <sup>2</sup> )	Adopted (2017)
BL900-23	Width and size of dock	Fixed	37.9 m <sup>2</sup> (408 ft <sup>2</sup> )	Pending

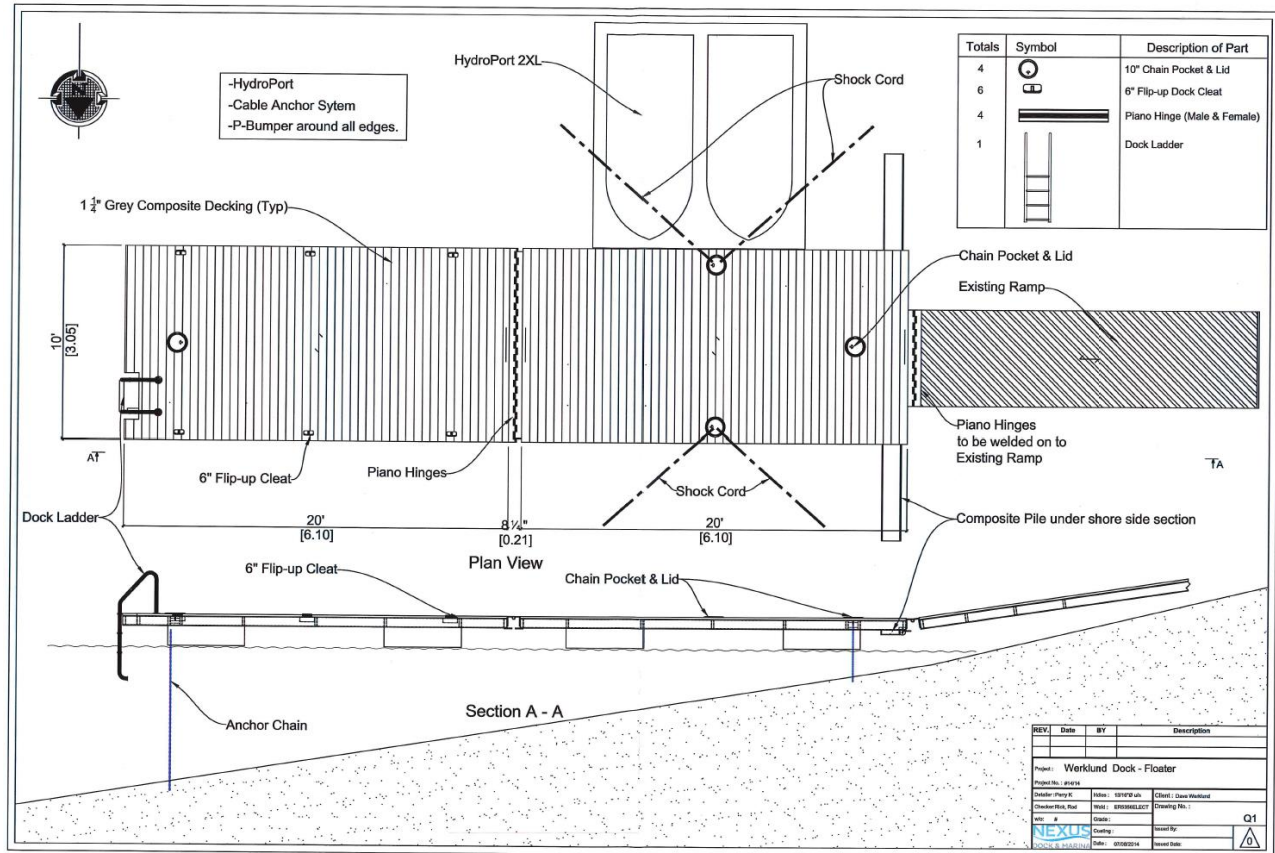
DP = Development Permit

BL = Bylaw Amendment

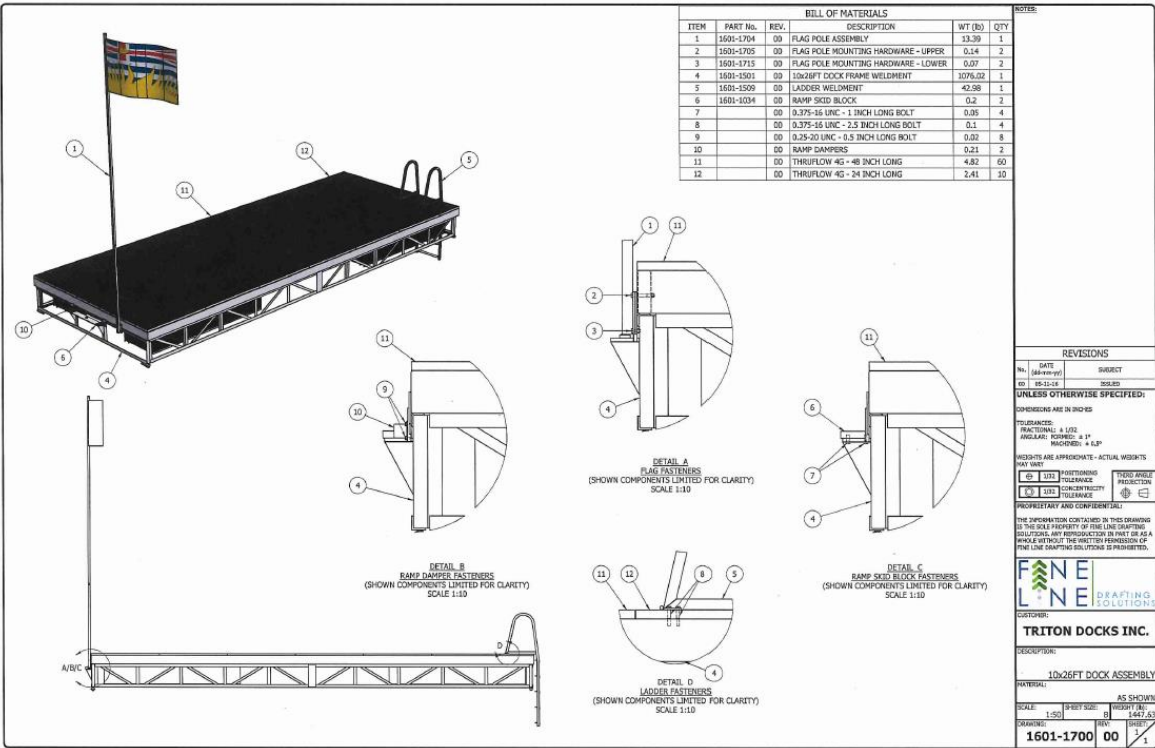
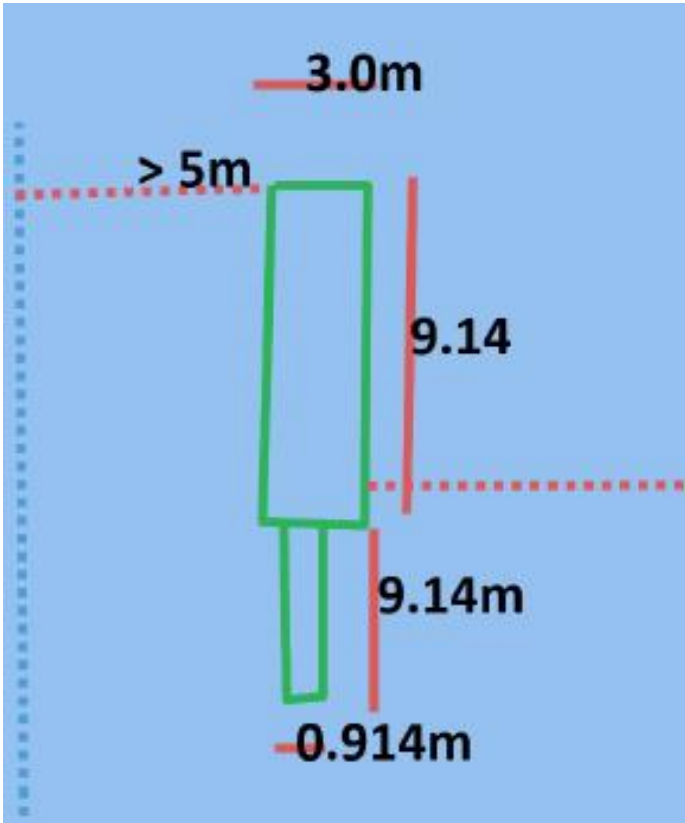
Electoral Area C, Sunnybrae

DP725-034, denied in 2015

Floating Dock size = 37.16 m<sup>2</sup> (399.99 ft<sup>2</sup>)

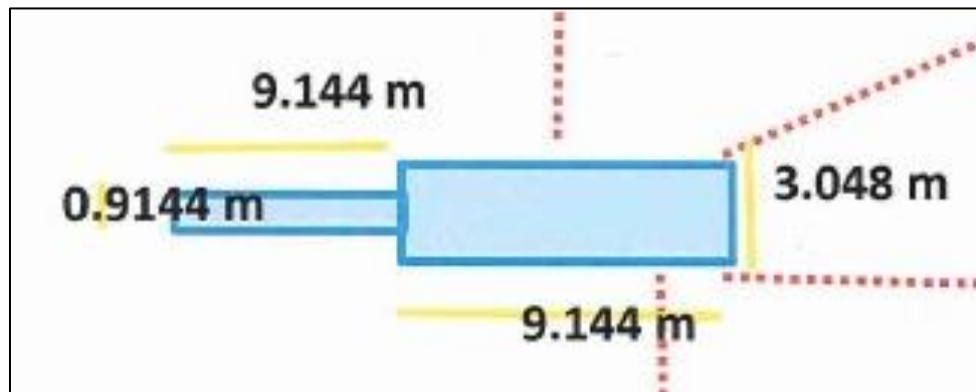


Electoral Area C, Blind Bay  
DP725-109, issued in 2017  
Floating Dock size = 27.89 m<sup>2</sup> (300.21 ft<sup>2</sup>)





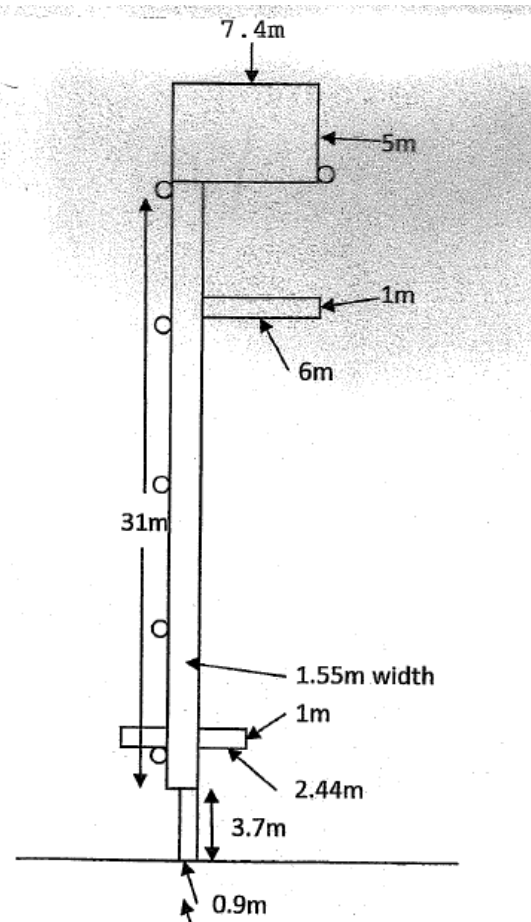
Electoral Area C, Eagle Bay  
DP725-137, issued in 2018  
Floating Dock size = 27.87 m<sup>2</sup> (300 ft<sup>2</sup>)



Electoral Area E, Swansea Point

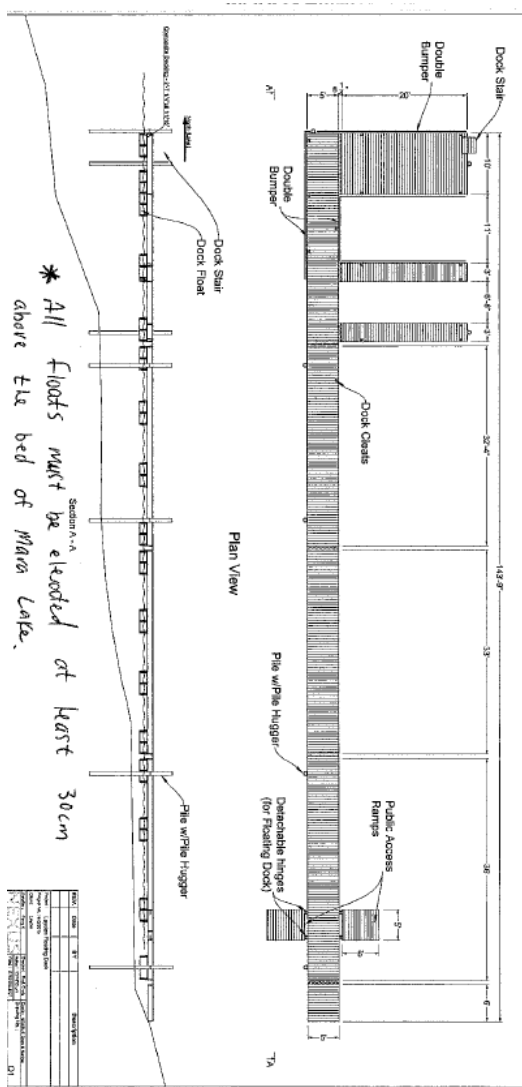
BL900-16, adopted in 2017

Fixed Dock Size =  $\sim 52.3 \text{ m}^2$  ( $\sim 562.95 \text{ ft}^2$ )





Fixed Dock size = 45.36 m<sup>2</sup> (488.25 ft<sup>2</sup>)



Electoral Area E, Swansea Point  
BL900-23, pending  
Fixed Dock size = 37.9 m<sup>2</sup> (408 ft<sup>2</sup>)

