



REVELSTOKE RCMP COMMUNITY POLICING REPORT – 2017

PREPARED FOR THE COLUMBIA SHUSHWAP REGIONAL DISTRICT

OPERATIONAL SERVICE – CSRD

	2017	2016
Person	2	4
Property	45	30
Other CC	12	11
Impaired	8	7
Drugs /Fed	14	14
Liquor Act	0	4
Other provincial	856	757

Person's offences consists of assaults, including Domestic Violence. Property offences include thefts, thefts from vehicles, thefts of vehicles and residential and corporate break and enters. Impaired driving includes the Immediate Roadside Prohibition. The predominant calls for service in the CSRD involve Erratic Driving complaints on the Trans-Canada Highway.

COLLISIONS

	2017	2016
Collisions	143	120
Injury	32	32
Fatal	4	0

Motor Vehicle Incidents increased year over year by 23 incidents. Injuries on the TCH remained the same however four MVIs included fatalities.

WARNING AND VIOLATION TICKETS

GENERAL DUTY TRAFFIC SERVICES

	WARN	TICKET
Trans Canada Hwy	93	269
Hwy 23	9	22

These statistics capture all Violation Tickets issued in the CSRD on the TCH and Hwy 23. The warnings and tickets are by General Duty and do not include the work of the Trans-Canada East Traffic Services or the Integrated Road Safety Unit.

OPERATIONAL SERVICE – RMR / SAR

	2017	2016
RMR Assist	4	4
RMR Property	6	7
RMR Missing	9	10
RMR Fatal	0	0
SAR Callouts	30	24

The presence of Revelstoke Mountain Resort and recreational sledding areas (i.e Boulder and Frisby Mountain) result in pressures for the RCMP and Revelstoke Search and Rescue. Back-country recreational activities are year round and have resulted in missing hikers, cyclists, climbers and water sports users.

ADMINISTRATION

	2017	2016
Complaint Calls	4431	4199
Prisoner Count	201	249
Phone Calls	6683	6841
Counter Calls	3492	3199
Police Information Checks	481	564
Liquor Licenses	86	64
Transcription Hours	374.50	370.0

There has been a consistent increase in call volume over the past four years, with an average year over year of 200 files. The Detachment is generally busier with greater demand in calls for service, administrative duties, counter calls, processing of immigration documents, criminal record checks, liquor license permit issuances and transcriptions.

RCMP COMMUNITY POLICING REPORT – 2017

PREPARED FOR THE COLUMBIA SHUSHWAP REGIONAL DISTRICT

COMMUNITY:

Police Officers and Staff of the Revelstoke RCMP Detachment involve themselves in various community activities both during regular duties and during personal time. This includes coaching youth sports, being on various committees and clubs, and being involved in cultural activities. There is a general participation in the events of the community by Detachment personnel. Each year the RCMP hosts the Emergency Food Drive.

HUMAN RESOURCES

MUNICIPAL CONTRACT		PROVINCIAL CONTRACT	
Regular Members	13 FTE	Regular Members	2 FTE
Current Strength	11 (+1 ODS)	Forensic Identification	1
Municipal Employees	2.5	Public Servants	2
Victim Services	2	Auxiliary Constables	2

- FTE – Full Time Equivalent

DETACHMENT COMMANDER COMMENTS:

The Revelstoke Detachment continues to be a busy Detachment. Revelstoke and the surrounding community continues to experience growth, and the result is that the RCMP is impacted by the increased volume of calls for service. Additionally, the complexity of investigations continues to evolve and expand, requiring more hours of investigations for each officer. The addition of the General Investigation Section position aids in serious crime files.

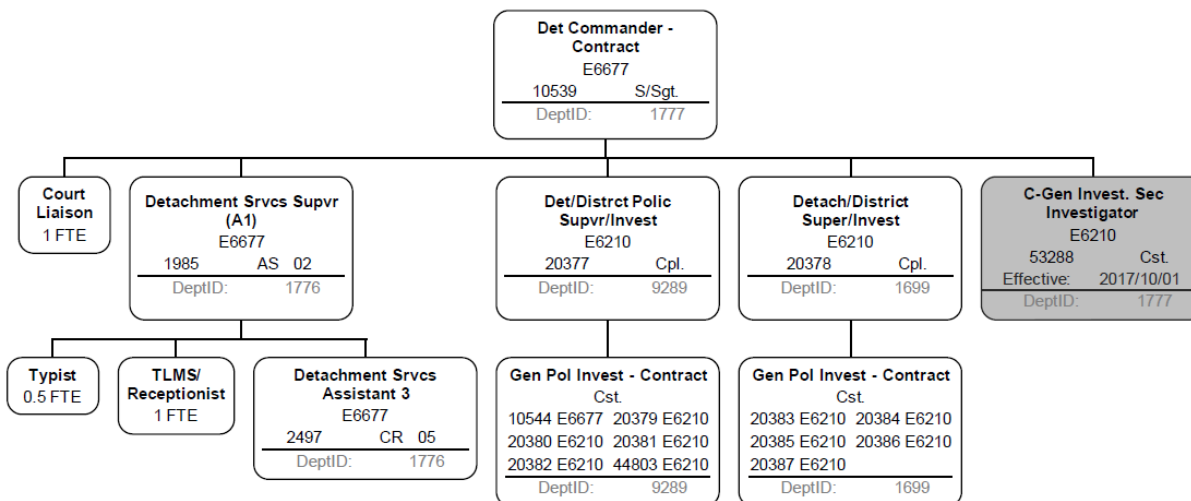
Within the CSRD the greatest pressure for the RCMP is noted to be on the Trans-Canada Highway where an ever growing number of calls for Erratic Driving Complaints result in police officers continually attempting to locate offenders over an almost 200 km stretch of mountainous highways. This appears to be primarily due to the condition of the highway and the increasing vehicle volume, both personal vehicles and commercial equipment.

The highway conditions including avalanches and rock slides make this a treacherous place to work for police officers in this particular stretch of the Trans-Canada Highway.

The city of Revelstoke authorized and funded an increase in Police Officers from 11 to 12 in 2015 and to 13 officers in 2017. A further request for an additional Municipal Funded officer in 2019 is being proposed. The optimal number of operational police officers in General Duty and General Investigation Services in the Revelstoke Detachment would be 18 FTE.

The Revelstoke RCMP Police-based Victim Services program is increasing in volume as well over this reporting period. Approximately 30% of all clients reportedly originate from the CSRD. The VS Program Manager is funded for 25 hours per week and frequently exceeds this number of hours when assisting clients. Documentation and reporting of work activities to the various levels of government is done beyond those paid hours. Victim Services is an essential service which aids victims of crime and major incidents to heal and return as functioning persons.

Revelstoke Detachment Organizational Chart – May 15, 2018



Respectfully Submitted: S/Sgt. Kurt GRABINSKY
Revelstoke Detachment Commander
2018-05-15