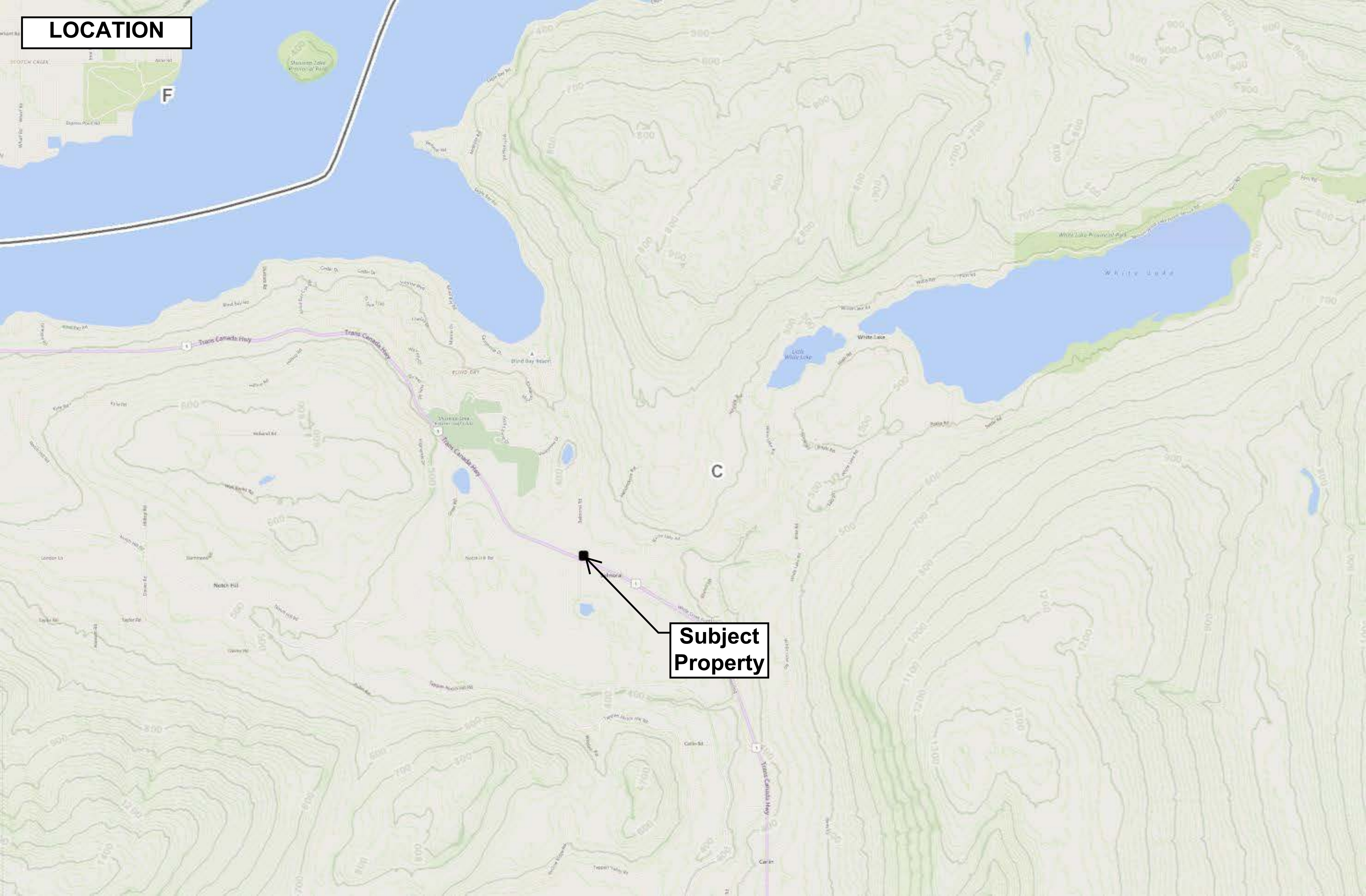
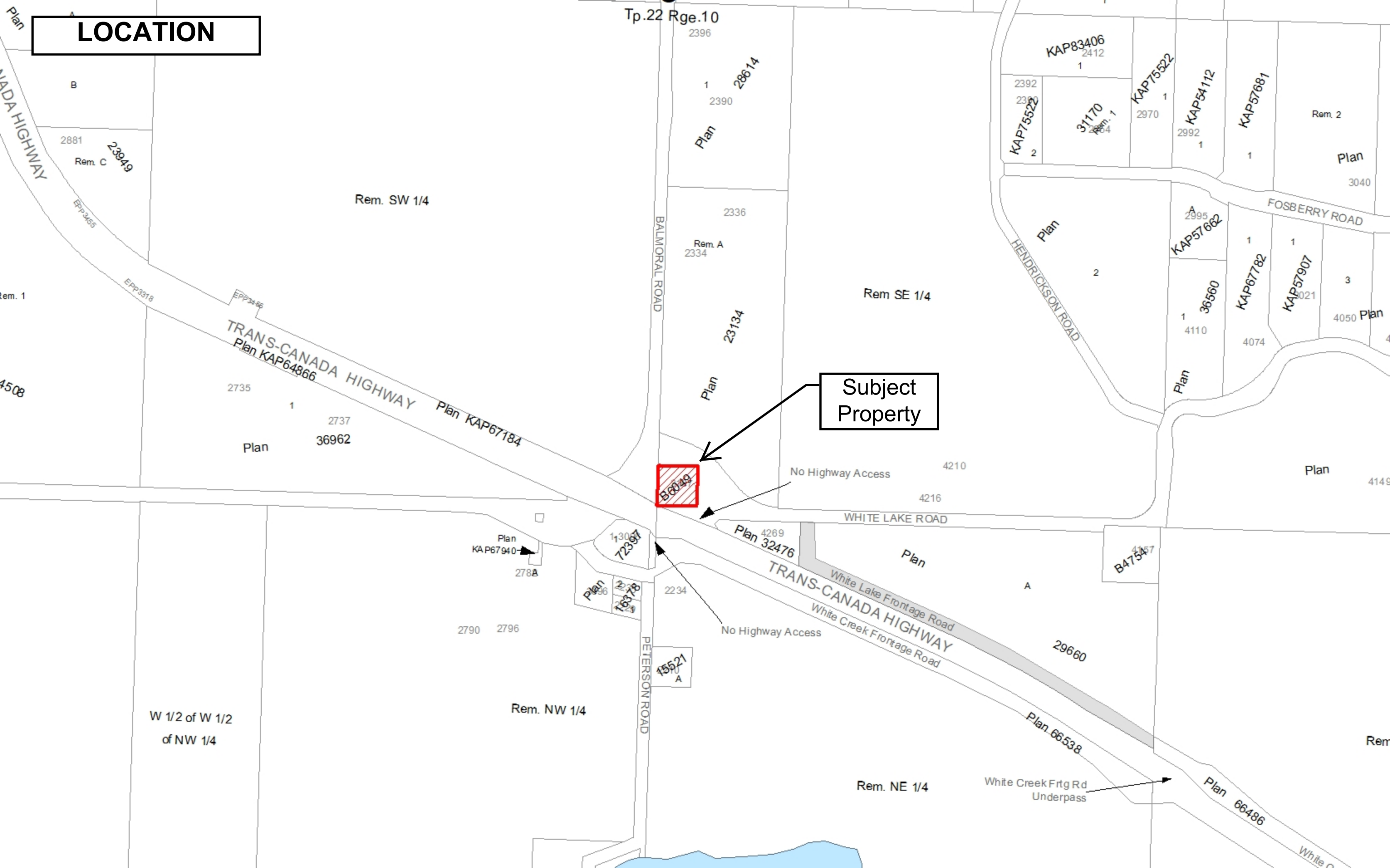


LOCATION

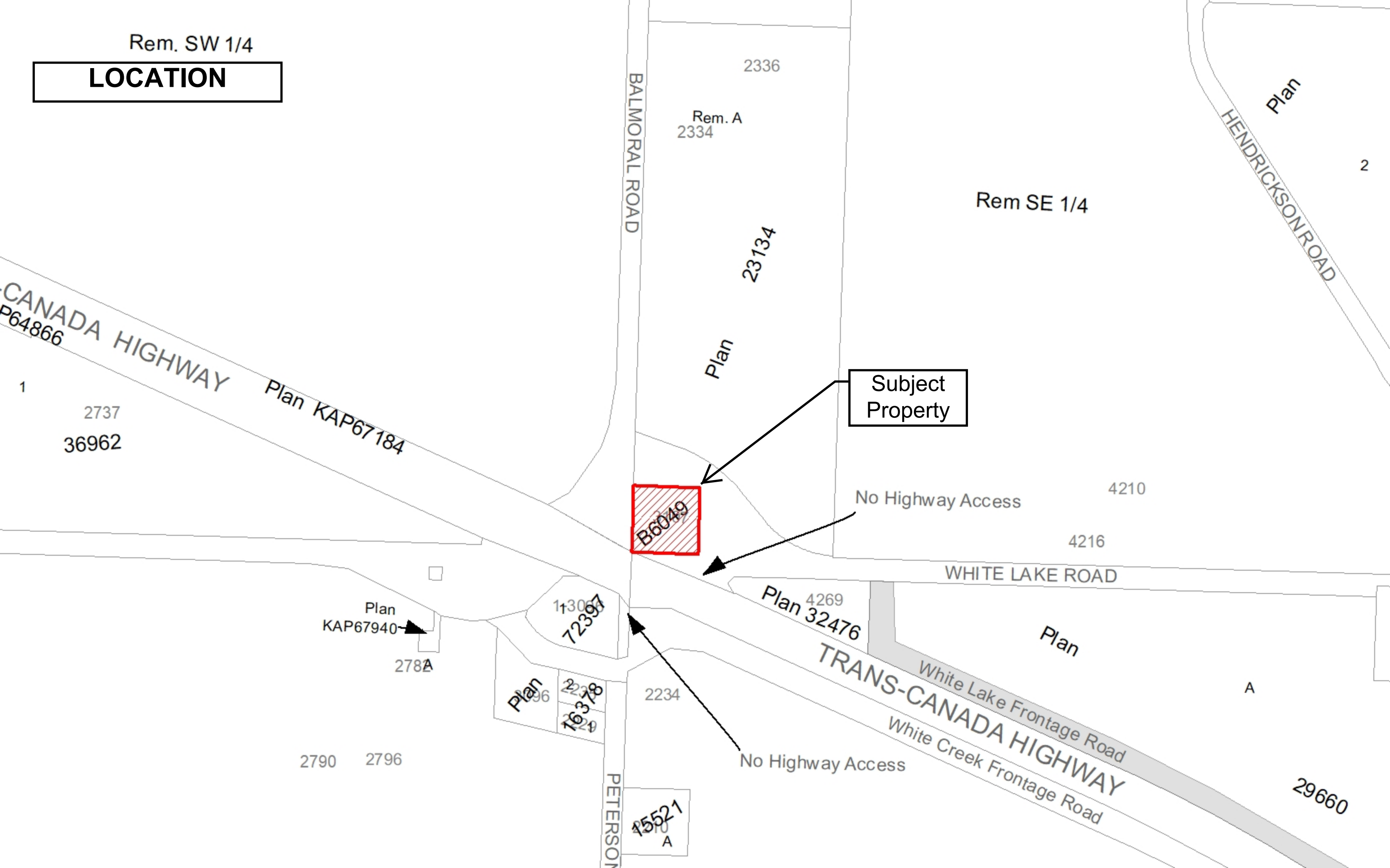


**Subject
Property**

LOCATION




LOCATION



ALR

Subject	Property
Mathematics	Quantitative
Science	Quantitative
History	Qualitative
Literature	Qualitative
Art	Qualitative
Music	Qualitative
Physical Education	Quantitative
Health	Quantitative
Language	Qualitative
Social Studies	Qualitative
Environmental Science	Quantitative
Computer Science	Quantitative
Business	Quantitative
Psychology	Qualitative
Philosophy	Qualitative
Religion	Qualitative
Political Science	Qualitative
Economics	Quantitative
Law	Qualitative
Medicine	Quantitative
Nursing	Quantitative
Engineering	Quantitative
Architecture	Qualitative
Design	Qualitative
Education	Qualitative
Communication	Qualitative
Journalism	Qualitative
Public Administration	Qualitative
Public Health	Quantitative
Environmental Health	Quantitative
Occupational Health	Quantitative
Community Health	Qualitative
Health Services Research	Quantitative
Health Economics	Quantitative
Health Law	Qualitative
Health Policy	Qualitative
Health Management	Qualitative
Health Communication	Qualitative
Health Behavior	Qualitative
Health Equity	Qualitative
Health Disparities	Qualitative
Health Promotion	Qualitative
Health Prevention	Qualitative
Health Care Delivery	Qualitative
Health Care Quality	Quantitative
Health Care Access	Qualitative
Health Care Costs	Quantitative
Health Care Financing	Quantitative
Health Care Reform	Qualitative
Health Care Innovation	Qualitative
Health Care Research	Quantitative
Health Care Education	Qualitative
Health Care Training	Qualitative
Health Care Leadership	Qualitative
Health Care Management	Qualitative
Health Care Administration	Qualitative
Health Care Policy	Qualitative
Health Care Law	Qualitative
Health Care Ethics	Qualitative
Health Care Regulation	Qualitative
Health Care Standards	Qualitative
Health Care Accreditation	Qualitative
Health Care Certification	Qualitative
Health Care Licensure	Qualitative
Health Care Registration	Qualitative
Health Care Credentialing	Qualitative
Health Care Privileging	Qualitative
Health Care Monitoring	Qualitative
Health Care Evaluation	Qualitative
Health Care Improvement	Qualitative
Health Care Innovation	Qualitative
Health Care Research	Quantitative
Health Care Education	Qualitative
Health Care Training	Qualitative
Health Care Leadership	Qualitative
Health Care Management	Qualitative
Health Care Administration	Qualitative
Health Care Policy	Qualitative
Health Care Law	Qualitative
Health Care Ethics	Qualitative
Health Care Regulation	Qualitative
Health Care Standards	Qualitative
Health Care Accreditation	Qualitative
Health Care Certification	Qualitative
Health Care Licensure	Qualitative
Health Care Registration	Qualitative
Health Care Credentialing	Qualitative
Health Care Privileging	Qualitative
Health Care Monitoring	Qualitative
Health Care Evaluation	Qualitative
Health Care Improvement	Qualitative
Health Care Innovation	Qualitative
Health Care Research	Quantitative
Health Care Education	Qualitative
Health Care Training	Qualitative
Health Care Leadership	Qualitative
Health Care Management	Qualitative
Health Care Administration	Qualitative
Health Care Policy	Qualitative
Health Care Law	Qualitative
Health Care Ethics	Qualitative
Health Care Regulation	Qualitative
Health Care Standards	Qualitative
Health Care Accreditation	Qualitative
Health Care Certification	Qualitative
Health Care Licensure	Qualitative
Health Care Registration	Qualitative
Health Care Credentialing	Qualitative
Health Care Privileging	Qualitative
Health Care Monitoring	Qualitative
Health Care Evaluation	Qualitative
Health Care Improvement	Qualitative
Health Care Innovation	Qualitative
Health Care Research	Quantitative
Health Care Education	Qualitative
Health Care Training	Qualitative
Health Care Leadership	Qualitative
Health Care Management	Qualitative
Health Care Administration	Qualitative
Health Care Policy	Qualitative
Health Care Law	Qualitative
Health Care Ethics	Qualitative
Health Care Regulation	Qualitative
Health Care Standards	Qualitative
Health Care Accreditation	Qualitative
Health Care Certification	Qualitative
Health Care Licensure	Qualitative
Health Care Registration	Qualitative
Health Care Credentialing	Qualitative
Health Care Privileging	Qualitative
Health Care Monitoring	Qualitative
Health Care Evaluation	Qualitative
Health Care Improvement	Qualitative
Health Care Innovation	Qualitative
Health Care Research	Quantitative
Health Care Education	Qualitative
Health Care Training	Qualitative
Health Care Leadership	Qualitative
Health Care Management	Qualitative
Health Care Administration	Qualitative
Health Care Policy	Qualitative
Health Care Law	Qualitative
Health Care Ethics	Qualitative
Health Care Regulation	Qualitative
Health Care Standards	Qualitative
Health Care Accreditation	Qualitative
Health Care Certification	Qualitative
Health Care Licensure	Qualitative
Health Care Registration	Qualitative
Health Care Credentialing	Qualitative
Health Care Privileging	Qualitative
Health Care Monitoring	Qualitative
Health Care Evaluation	Qualitative
Health Care Improvement	Qualitative
Health Care Innovation	Qualitative
Health Care Research	Quantitative
Health Care Education	Qualitative
Health Care Training	Qualitative
Health Care Leadership	Qualitative
Health Care Management	Qualitative
Health Care Administration	Qualitative
Health Care Policy	Qualitative
Health Care Law	Qualitative
Health Care Ethics	Qualitative
Health Care Regulation	Qualitative
Health Care Standards	Qualitative
Health Care Accreditation	Qualitative
Health Care Certification	Qualitative
Health Care Licensure	Qualitative
Health Care Registration	Qualitative



Rabby Lake

A map of Mossy Lake, showing its irregular shoreline and a small inlet on the left side. The lake is labeled "Mossy Lake" in the center.

OCP

AG

RR2

Subject
Property

Balmoral

HC

B A L M O R A L

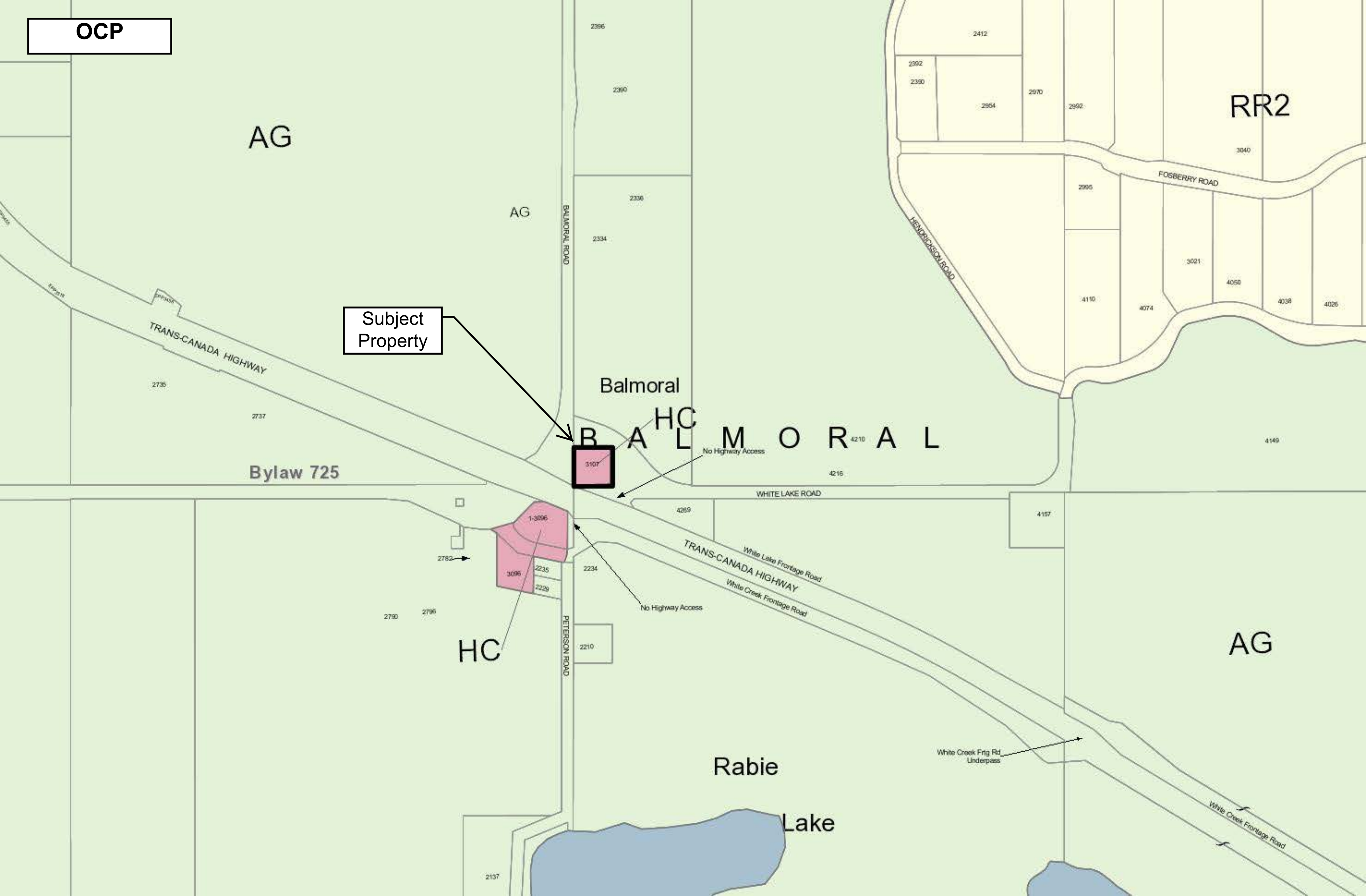
Bylaw 725

HC

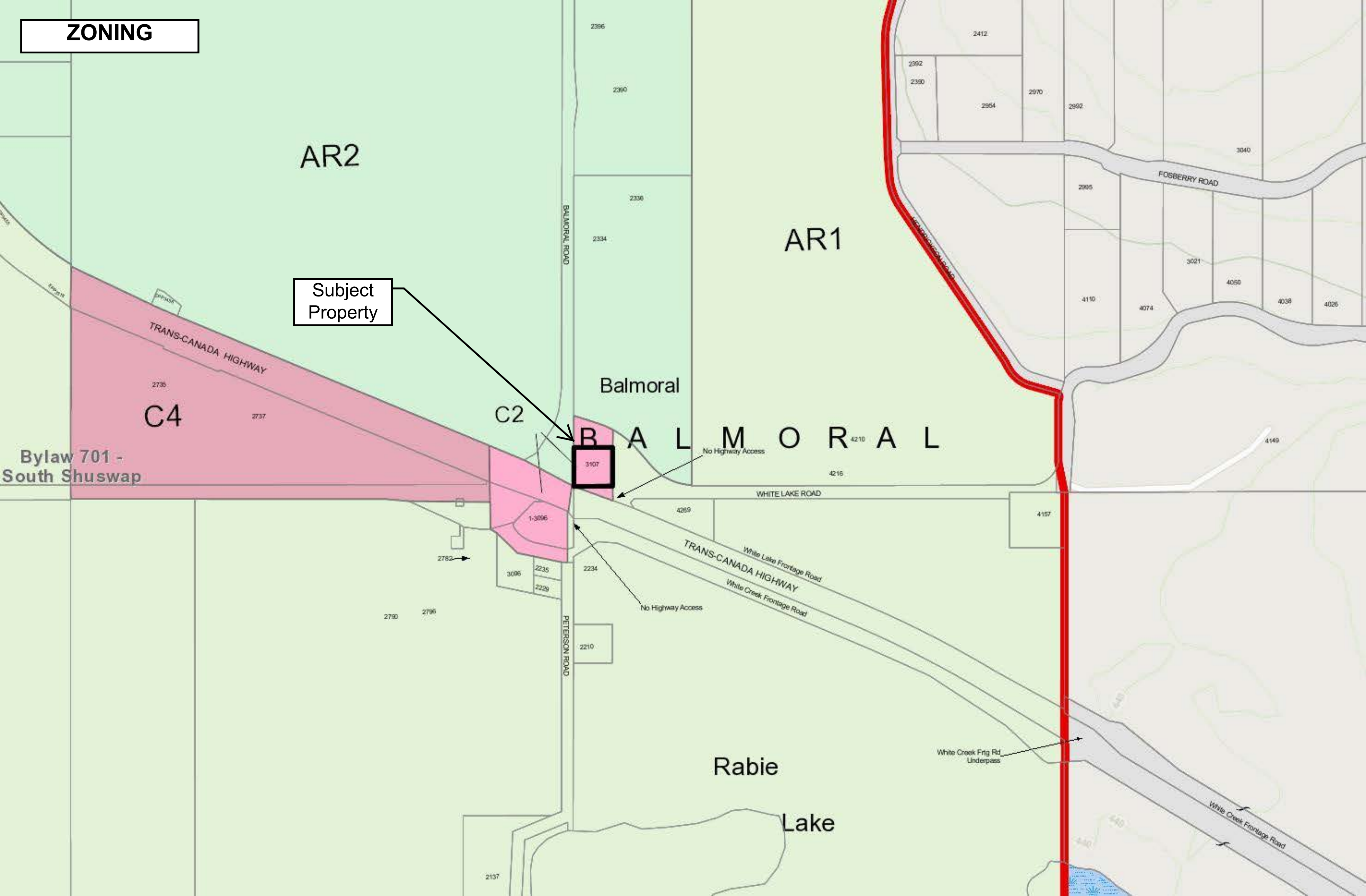
AG

Rabie

Lake



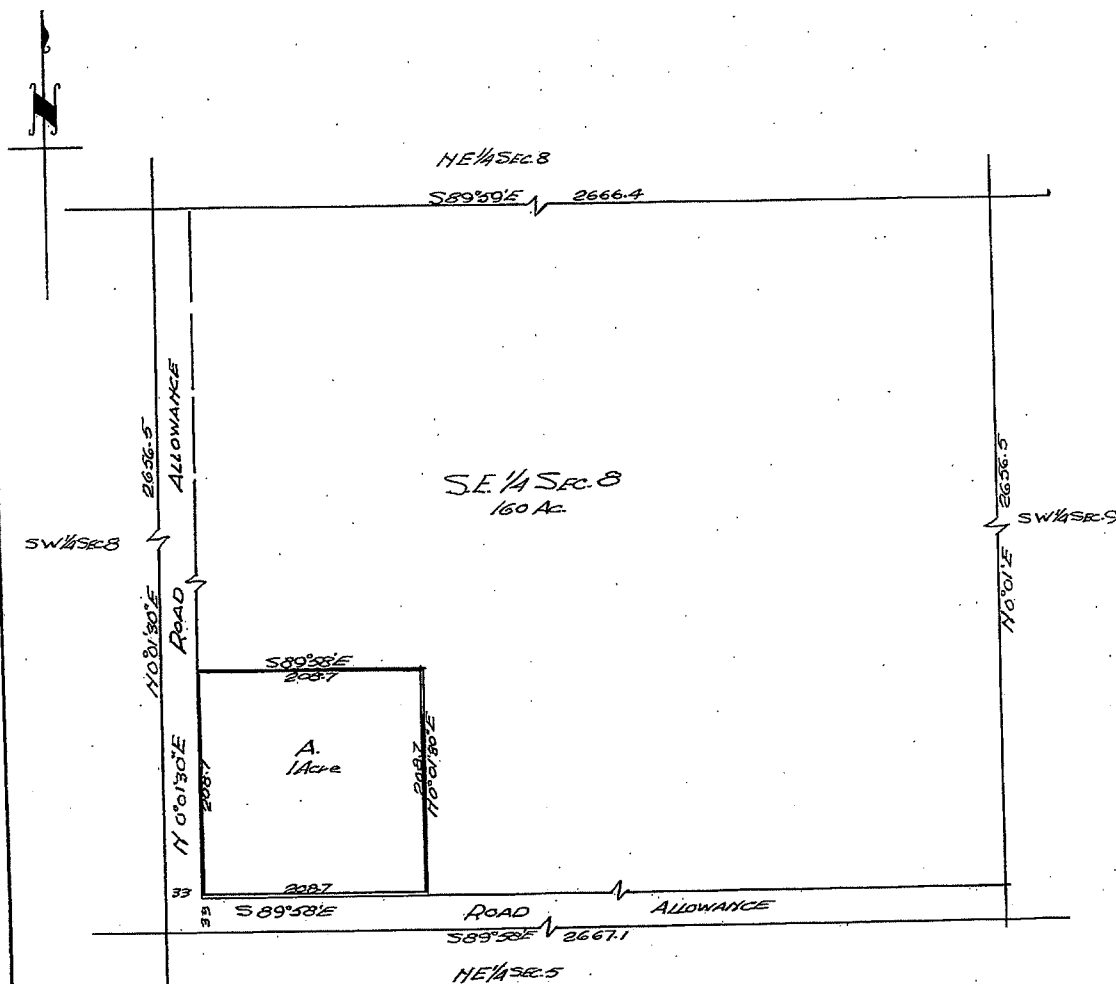
ZONING



**EXPLANATORY PLAN
OF PART OF
S.E. 1/4 SECTION 8, T.P. 22, RANGE 10, W. OF 6TH M.
KAMLOOPS DIVISION, YALE DISTRICT.
Scale 100 ft. = 1 in.**

PLAN No B 6049.
Deposited under Section 79
of the "Land Registry Act".
this 23rd day of July, 1948

Registrar

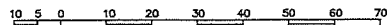


OWNER Anna Leske Kamloops, B.C.
15th June, 1948
Witness Alma Hendrickson

Certified Correct
M. Brown
S.B.C.L.S.

Posting Plan of Parcel A (Plan B6049) of the SE1/4, Sec 8, Tp 22, R 10, W6M, KDYD

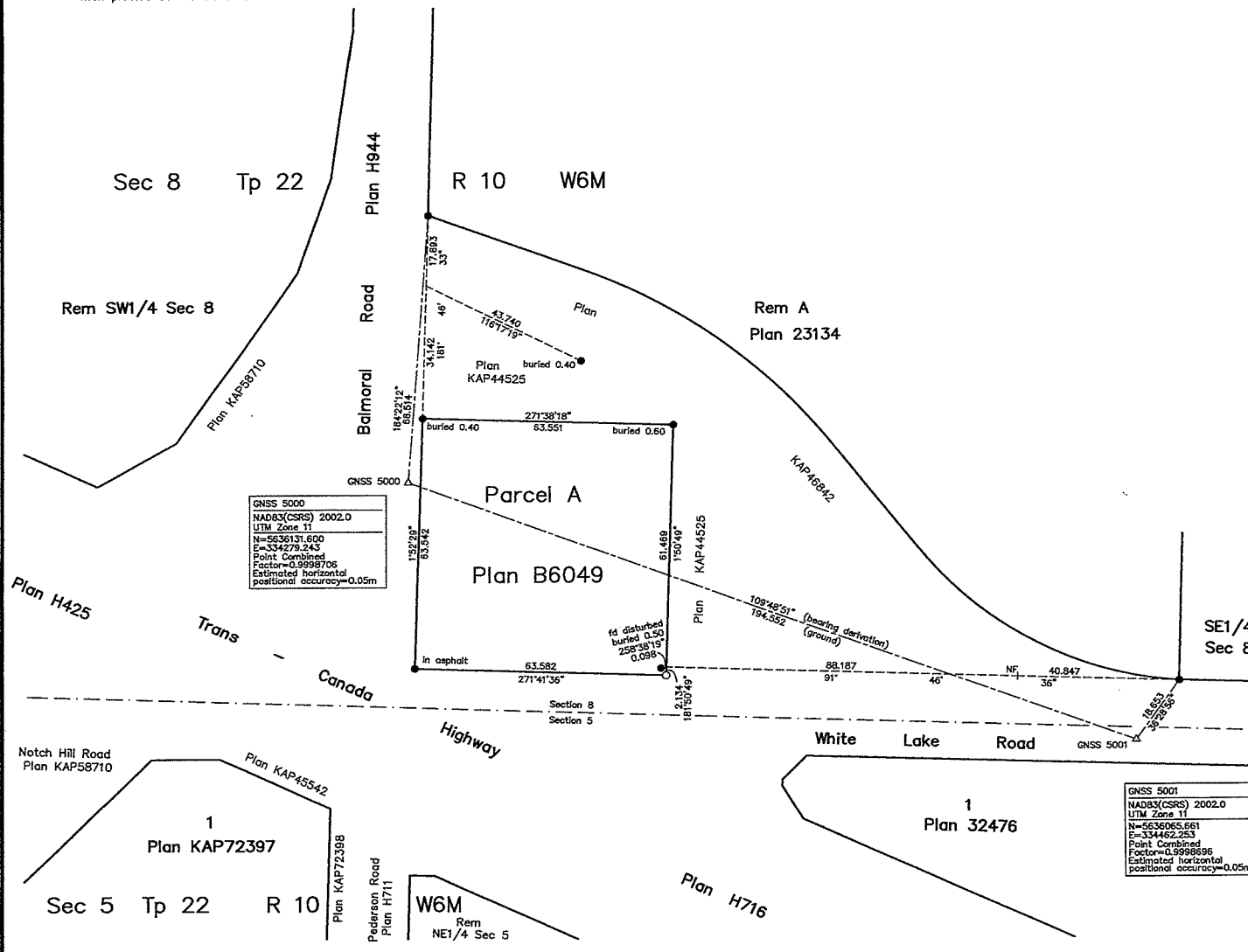
Pursuant to Section 68 of the Land Title Act
BCGS 82L.084



All distances are in metres.

The intended plot size of this plan is 560mm in width by 432mm in height (C size)
when plotted at a scale of 1:750

PLAN EPP74519



LEGEND

Grid bearings are derived from differential dual frequency GNSS observations and are referred to the central meridian of UTM Zone 11.

This plan shows horizontal ground-level distances, unless otherwise specified. To compute grid distances, multiply ground-level distances by the average combined factor of 0.9998701. The average combined factor has been determined based on an ellipsoidal elevation of 426.1 metres.

The UTM coordinates and estimated horizontal positional accuracy achieved are derived from differential dual frequency GNSS observations post processed using the Natural Resources Canada Precise Point Positioning Service.



- Standard Iron Post Found
- Standard Iron Post Placed
- △ Traverse Hub Placed

This plan lies within the Columbia Shuswap Regional District

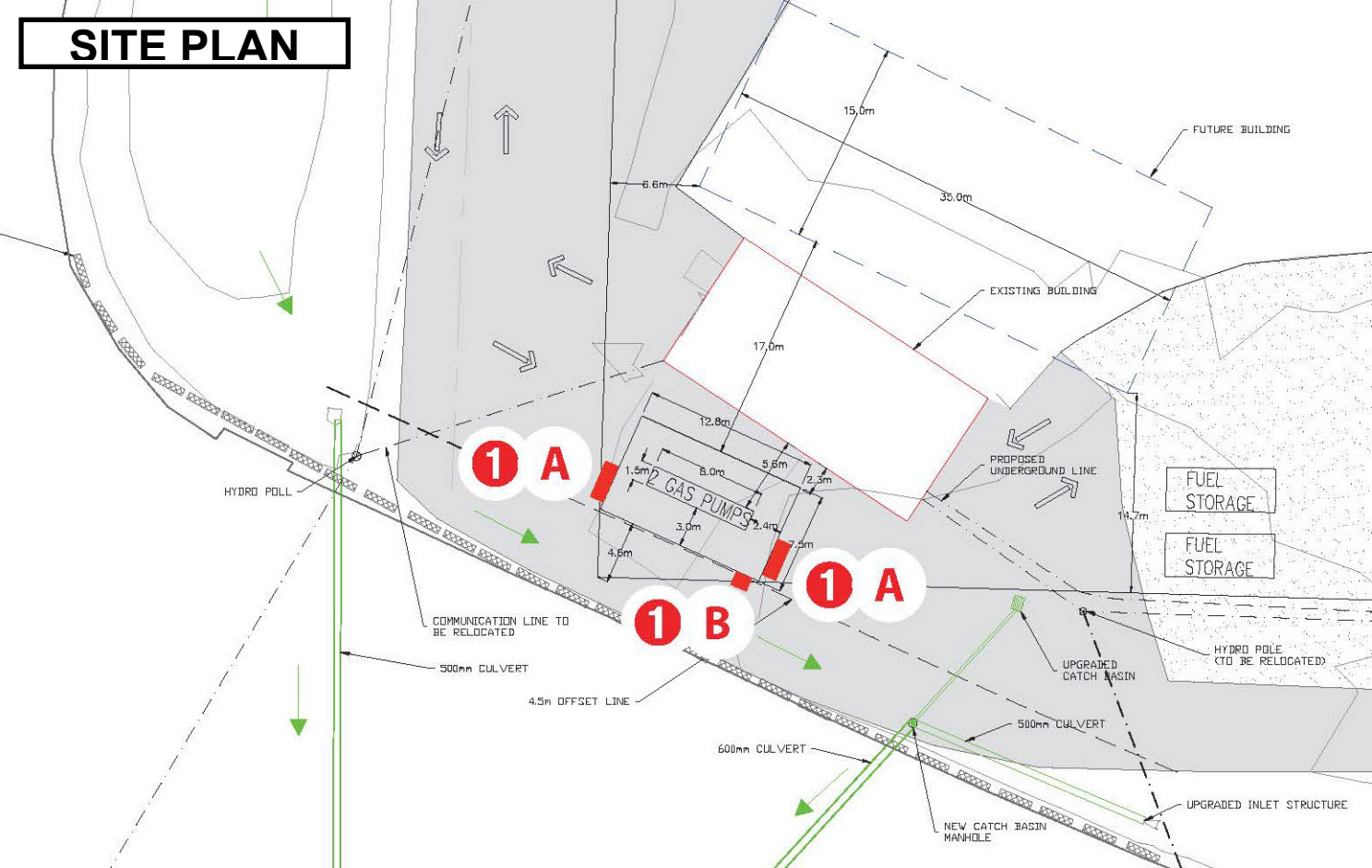
The field survey represented by this plan was completed on the 17th day of July, 2017
Mark R Mason, BCLS (929)

BROWNE JOHNSON LAND SURVEYORS
B.C. AND CANADA LANDS
SALMON ARM, B.C. 250-832-9701
File: 356-17 Fb.R125 p.40
356-17.raw

[illegible]

<div style="text-align: center;">  <h1 style="margin: 0;">Chevron</h1> </div>	Date: NOVEMBER 27 2017		Designer:	This is an original unpublished drawing created by Country Signs Inc. It is submitted for your personal use in connection with a project being prepared for you by Country Signs Inc. It is not to be shown to anyone outside your organization, nor is it to be used, reproduced or exhibited in any fashion.	App'd:	I have carefully reviewed and hereby accept the drawing(s) as shown. I realize that any changes to these designs made before or after production may alter the contract price. All changes must be in writing and approved by both parties prior to production.	 <div style="text-align: center;"> T: 1.800.748.0277 E: info@countrysigns.ca W: countrysigns.ca </div>
	Location: 3107 TC HWY / BALMORAL RD SORRENTO BC		Rev. No.:		App'd:		
	Job Number:	ARTIST'S CONCEPT - CONFIRMATION ON PERMITTING, FABRICATION AND ENGINEERING TBD					

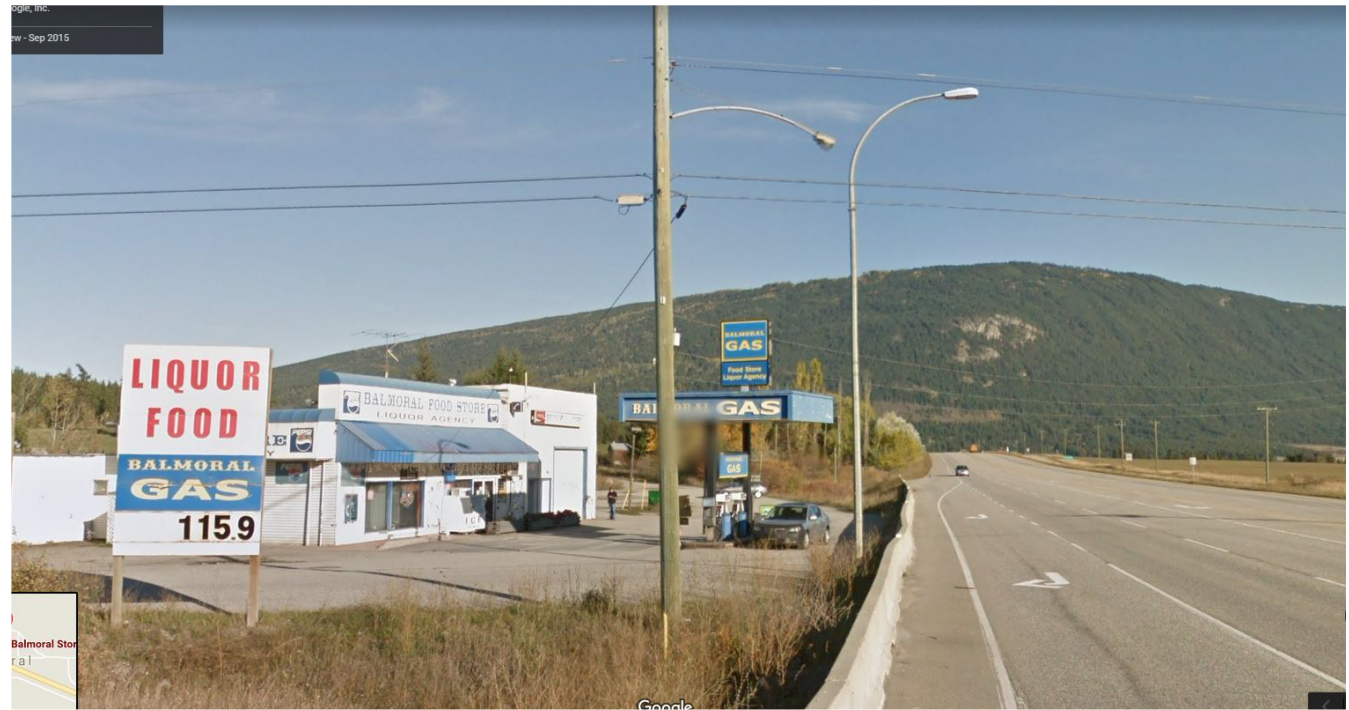
SITE PLAN



CANOPY RENDERING



ARTIST’S CONCEPT

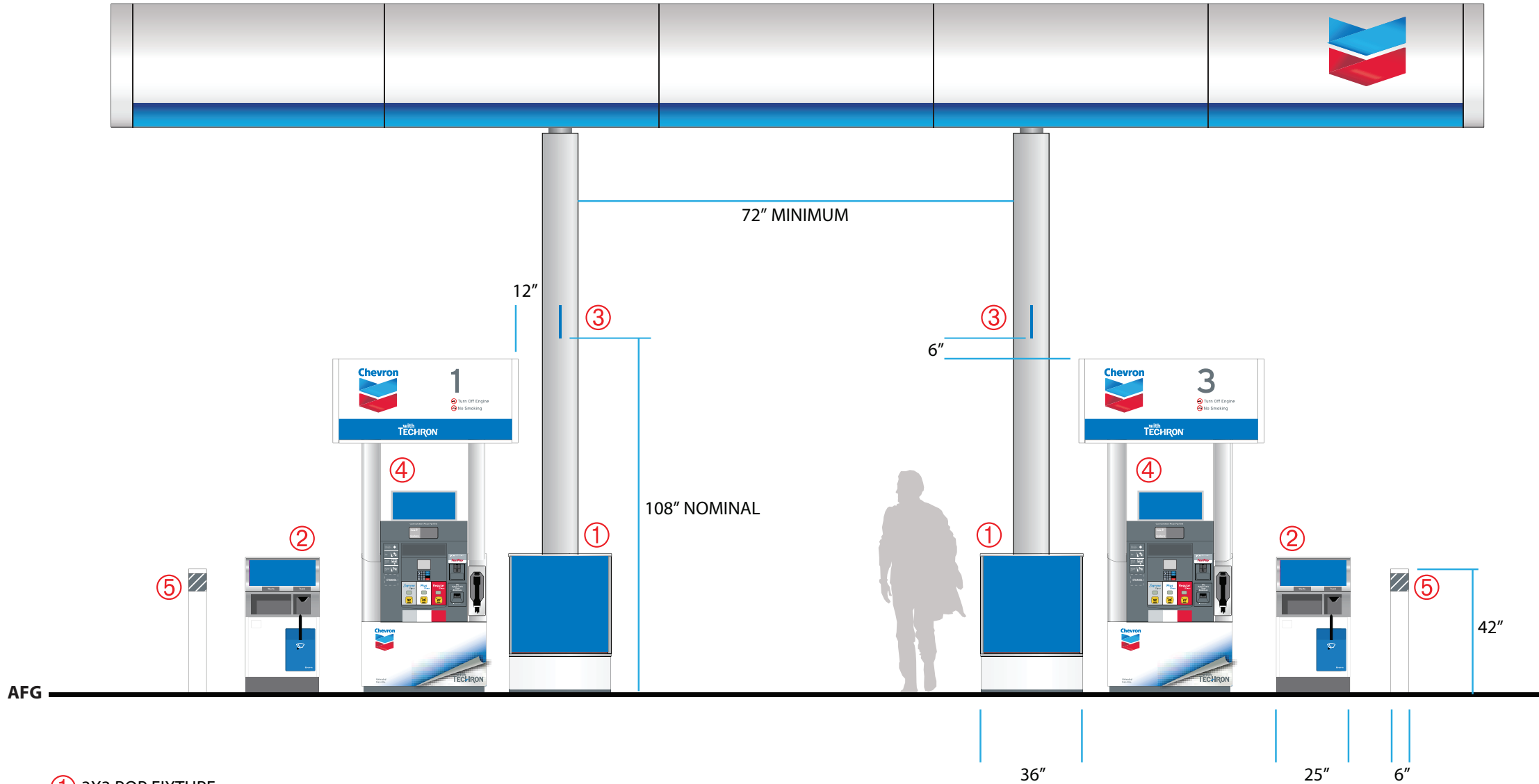


EXISTING STATION

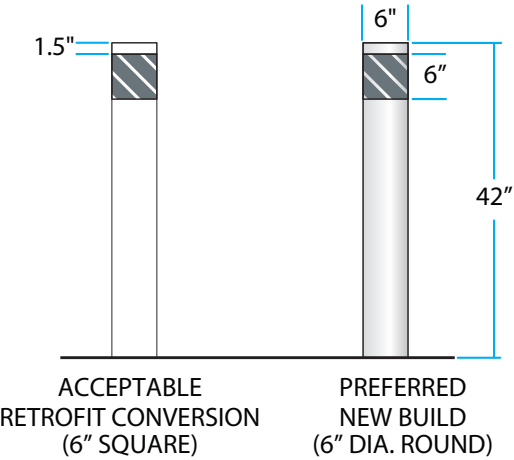
Chevron	Date: NOVEMBER 27 2017		Designer:	This is an original unpublished drawing created by Country Signs Inc. It is submitted for your personal use in connection with a project being prepared for you by Country Signs Inc. It is not to be shown to anyone outside your organization, nor is it to be used, reproduced or exhibited in any fashion.	App'd:	I have carefully reviewed and hereby accept the drawing(s) as shown. I realize that any changes to these designs made before or after production may alter the contract price. All changes must be in writing and approved by both parties prior to production.		T: 1.800.748.0277 E: info@countrysigns.ca W: countrysigns.ca
	Location: 3107 TC HWY / BALMORAL RD SORRENTO BC		Rev. No.:		App'd:			
	Job Number:	ARTIST'S CONCEPT - CONFIRMATION ON PERMITTING, FABRICATION AND ENGINEERING TBD						
					Territory Manager Signature:	<div>APPROVED</div> <div>Dealer Signature: _____</div>		

CANOPY ELEVATION

PUMP INLINE OR TANDEM LAYOUT



- ① 3X3 POP FIXTURE
- ② COMBO TRASH VALET
- ③ DISPENSER ID FLAG
- ④ PUMP TOPPER
- ⑤ BOLLARD










PHOTO COMPLETED WORK, ALL SIDES

INSTALLED AS PER ARTWORK

IS FULLY CLEANED & ILLUMINATED

PHOTO INTERIOR OF ALL RETROFIT PYLONS

INSTALLER

CLIENT

ORTHOPHOTO



Balmoral

B A L M O R A L

No Highway Access

WHITE LAKE ROAD

No Highway Access

White Lake Frontage Road
TRANS-CANADA HIGHWAY
White Creek Frontage Road

Rabie

Lake

White Creek Frntg Rd
Underpass

ORTHOPHOTO

3107

1-3096

