

Amendments to Tolko Forest Stewardship Plan to add new Cutblocks and Roads



Development Services

RECOMMENDATION:

THAT: the Board recommend to Tolko Industries Ltd. (Lumby) and the Minister of Forest Lands and Natural Resource Operations that a moratorium be placed on future logging activity in the Hummingbird Creek and Mara Creek basin due to the history of large debris flows in this area;

AND THAT: the Board request Tolko Industries Ltd. (Lumby) to hold public engagement meetings in Sicamous and Falkland to provide information and answer questions regarding the Forest Stewardship Plan amendments.

Background

Referral letter sent February 22, 2017

TOLKO
INDUSTRIES LTD.
SOUTHERN INTERIOR WOODLANDS
LUMBY OFFICE

Okanagan Division
Telephone: 250 547 2111
Fax: 250 547 1274

Columbia Shuswap Regional District
555 Harbourfront Drive NE
Box 978
Salmon Arm, B.C. V1E 4P1

February 22, 2017

Attention: Howard Pinnock, Senior Planner

**RE: Forest Stewardship Plan Cutblock and Road Development Information Sharing Package
2017-SI-05 for Tolko Southern Interior Woodlands, Lumby**

This letter is being sent to you as a local government organization and as part of our information sharing referral process of our Forest Stewardship Plan (FSP). At this time we are adding new cutblocks and roads to our FSP. Several of these cutblocks and roads are within the "Community Crown Interface Area" resource management zone of the Okanagan Shuswap Land and Resource Management Plan (LRMP). We request that you review the new cutblocks and roads on the map(s) 4, 5 and 7 posted to our internet web page for any potential impacts to your interest:

<http://tolko.com/responsibility/certification-stewardship/okanagan-woodlands>

New cutblocks are pink with a dark pink outline and new roads have a yellow highlight on top of a red dashed line.

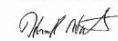
We encourage you to contact us if you have any inquiries regarding the new cutblocks and roads. Comments regarding potential impacts to your interests should be made to Tolko by April 24, 2017. After this date, we intend to proceed with development of these cutblocks and roads and to obtain Cutting Permit and Road Permit authorities.

If you would like to discuss this referral package in person, please call me to coordinate a meeting. Comments may also be emailed or mailed directly to me as per the below contact information.

We appreciate your review and comments regarding the 2017-SI-05 referral package.

Yours Truly,

Tolko Industries Ltd.
Southern Interior Woodlands



Harold Waters, RPF
Operations Forester Planning – Southern Interior Woodlands
Harold.Waters@tolko.com
250-547-1244

<input type="checkbox"/> CAO <input type="checkbox"/> Works <input type="checkbox"/> DS <input type="checkbox"/> FinAdm	<input type="checkbox"/> Agenda <input type="checkbox"/> Reg Board <input type="checkbox"/> In Camera <input type="checkbox"/> Other Mtg	Ownership: File#
FEB 27 2017		
<input type="checkbox"/> Ec Dev <input type="checkbox"/> IT <input type="checkbox"/> Parks <input type="checkbox"/> SEP <input type="checkbox"/> HR <input type="checkbox"/> Other	<input type="checkbox"/> Staff to Report <input type="checkbox"/> Staff to Respond <input type="checkbox"/> Staff Info Only <input type="checkbox"/> Dir Mailbox <input type="checkbox"/> Dir Circulate	Ack Sent: <input type="checkbox"/> Fax <input type="checkbox"/> Mail <input type="checkbox"/> Email

Background

RE: Forest Stewardship Plan Cutblock and Road Development Information Sharing Package - 2017-SI-05 for Tolko Southern Interior Woodlands, Lumby

*This letter is being sent to you as a local government organization and as part of our information sharing referral process of our Forest Stewardship Plan (FSP). **At this time we are adding new cutblocks and roads to our FSP.** Several of these cutblocks and roads are within the "Community Crown Interface Area" resource management zone of the Okanagan Shuswap Land and Resource Management Plan (LRMP).*

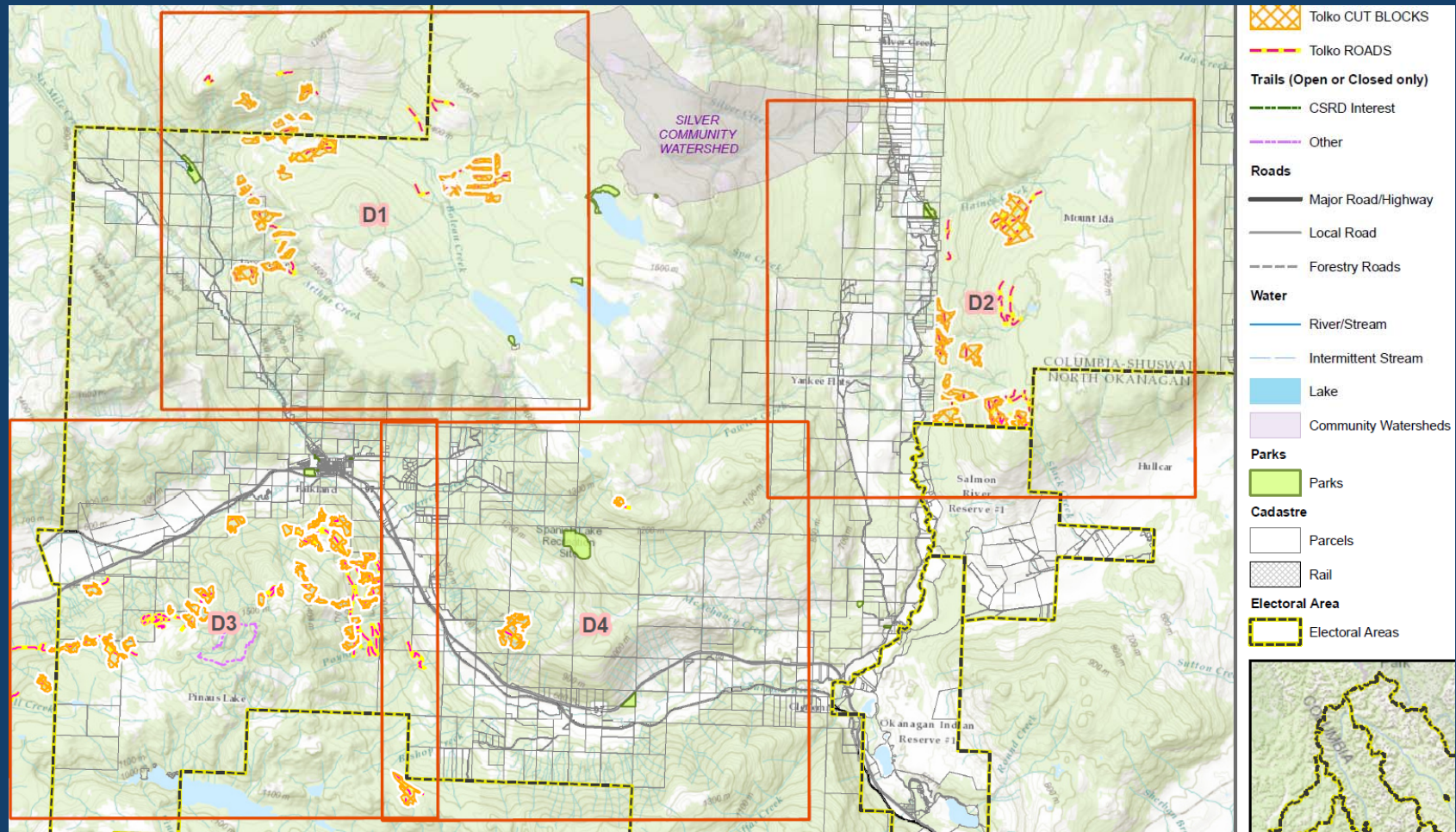
We encourage you to contact us if you have any inquiries regarding the new cutblocks and roads. Comments regarding potential impacts to your interests should be made to Tolko by April 24, 2017. After this date, we intend to proceed with development of these cutblocks and roads and to obtain Cutting Permit and Road Permit authorities.

Locations – Area D

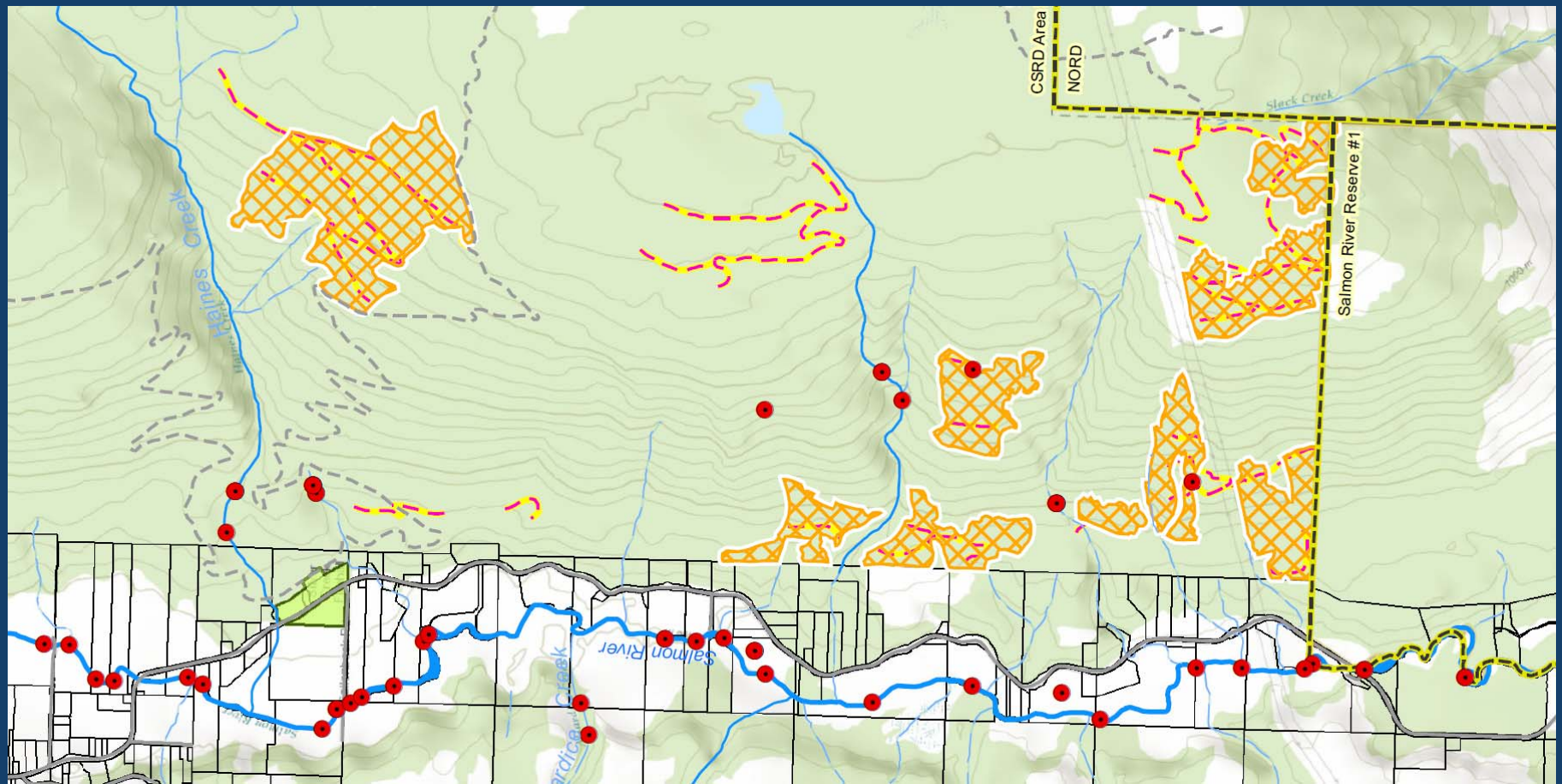
The map displays four Tolko CUT BLOCKS (D1, D2, D3, D4) in Area D. The map includes a legend with the following categories:

- Tolko CUT BLOCKS**: Represented by orange hatched areas.
- Tolko ROADS**: Represented by red dashed lines.
- Trails (Open or Closed only)**:
 - CSRD Interest: Represented by green dashed lines.
 - Other: Represented by purple dashed lines.
- Roads**:
 - Major Road/Highway: Represented by thick black lines.
 - Local Road: Represented by thin black lines.
 - Forestry Roads: Represented by grey dashed lines.
- Water**:
 - River/Stream: Represented by blue lines.
 - Intermittent Stream: Represented by light blue lines.
 - Lake: Represented by light blue areas.
 - Community Watersheds: Represented by light purple areas.
- Parks**: Represented by green areas.
- Cadastre**:
 - Parcels: Represented by white areas with black outlines.
 - Rail: Represented by grey hatched areas.
- Electoral Area**: Represented by yellow dashed lines.

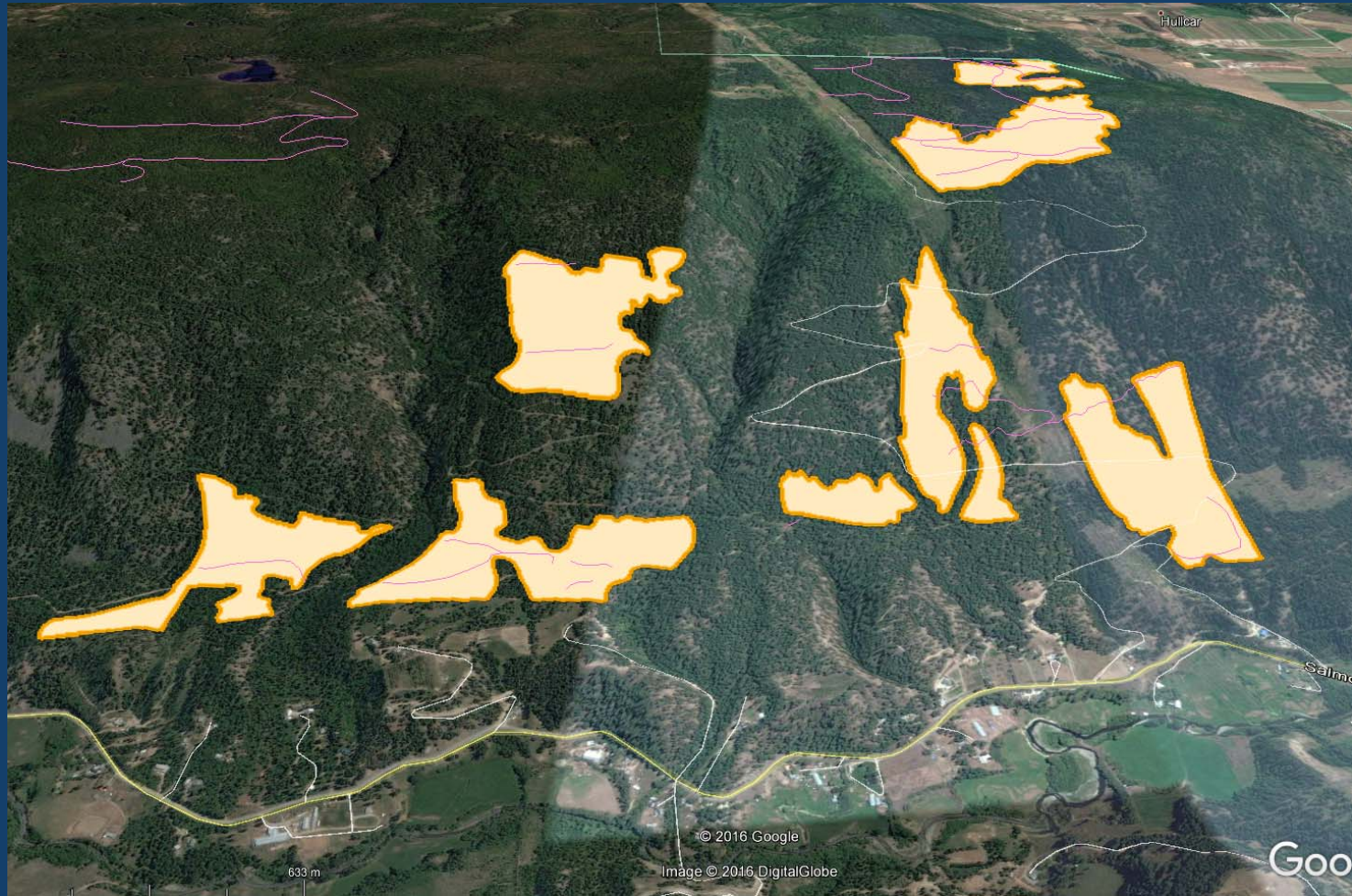
The map also shows the Silver Community Watershed, Columbia Shuswap North Okanagan, and various geographical features like Pinnau Lake, Sparrow Lake, and the Okanagan Indian Reserve #1. An inset map in the bottom right corner shows the location of Area D within the larger context of the Columbia Shuswap North Okanagan region.



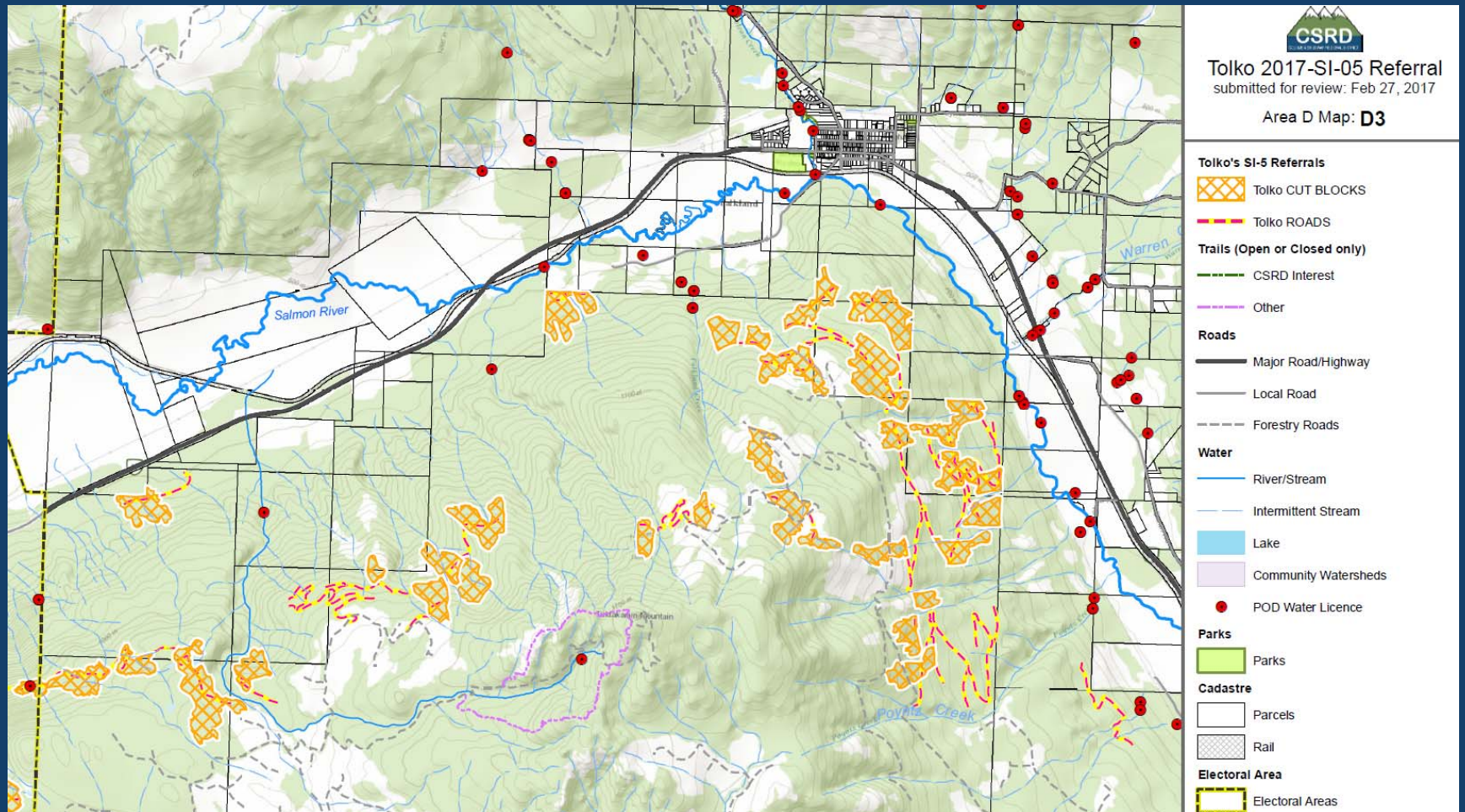
Locations – Area D



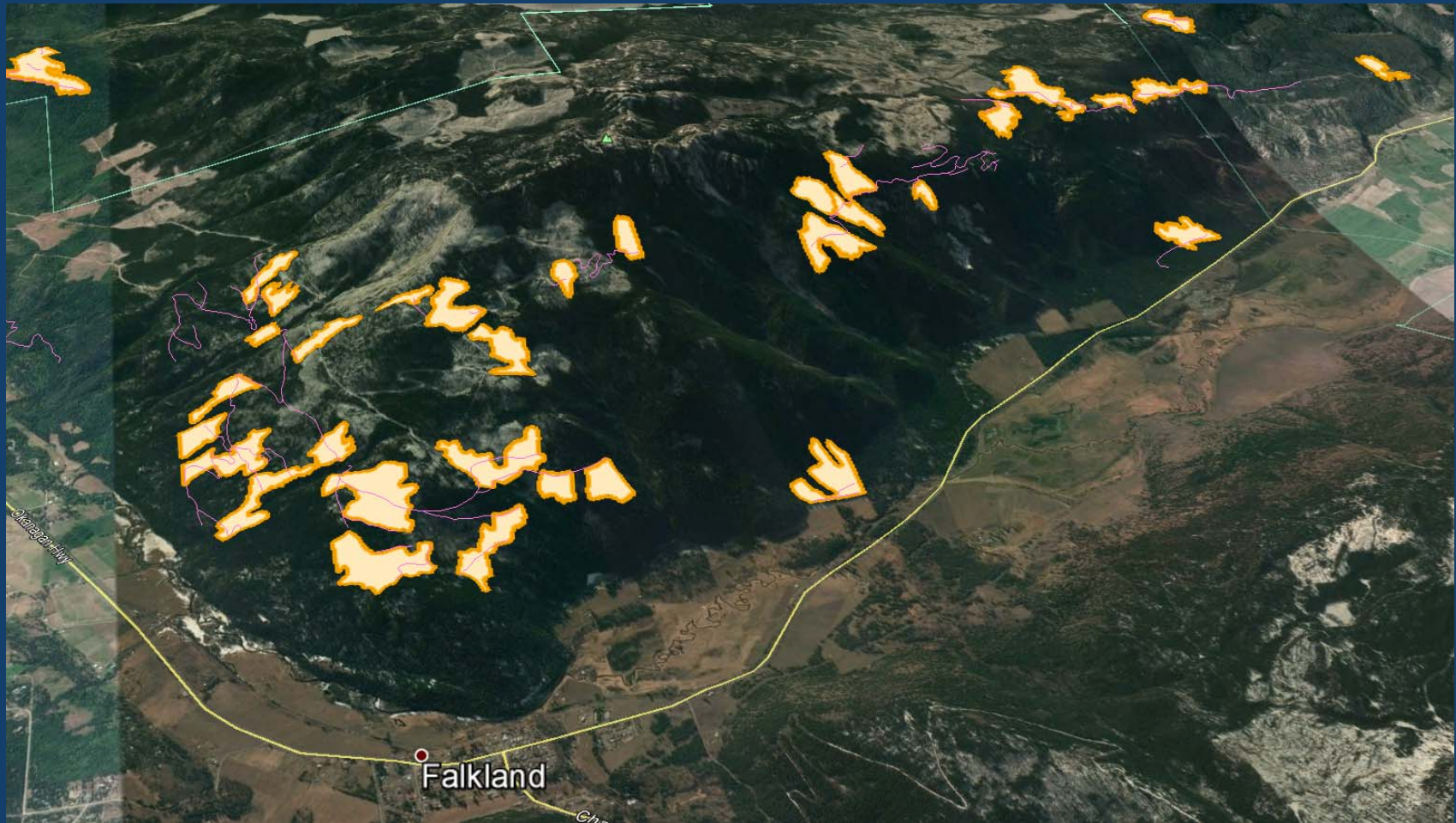
Locations – Salmon Valley



Locations – Falkland



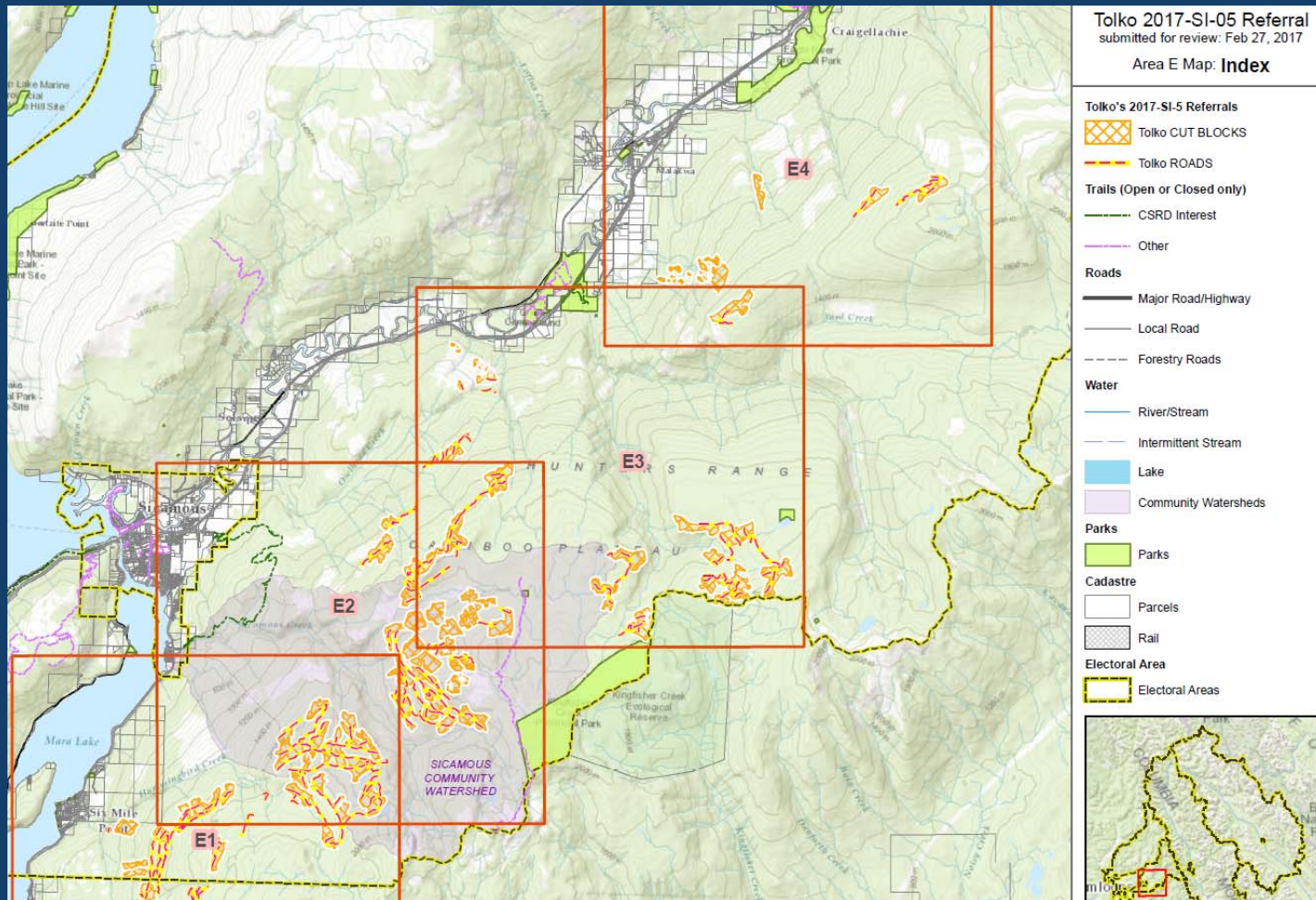
Locations – Falkland



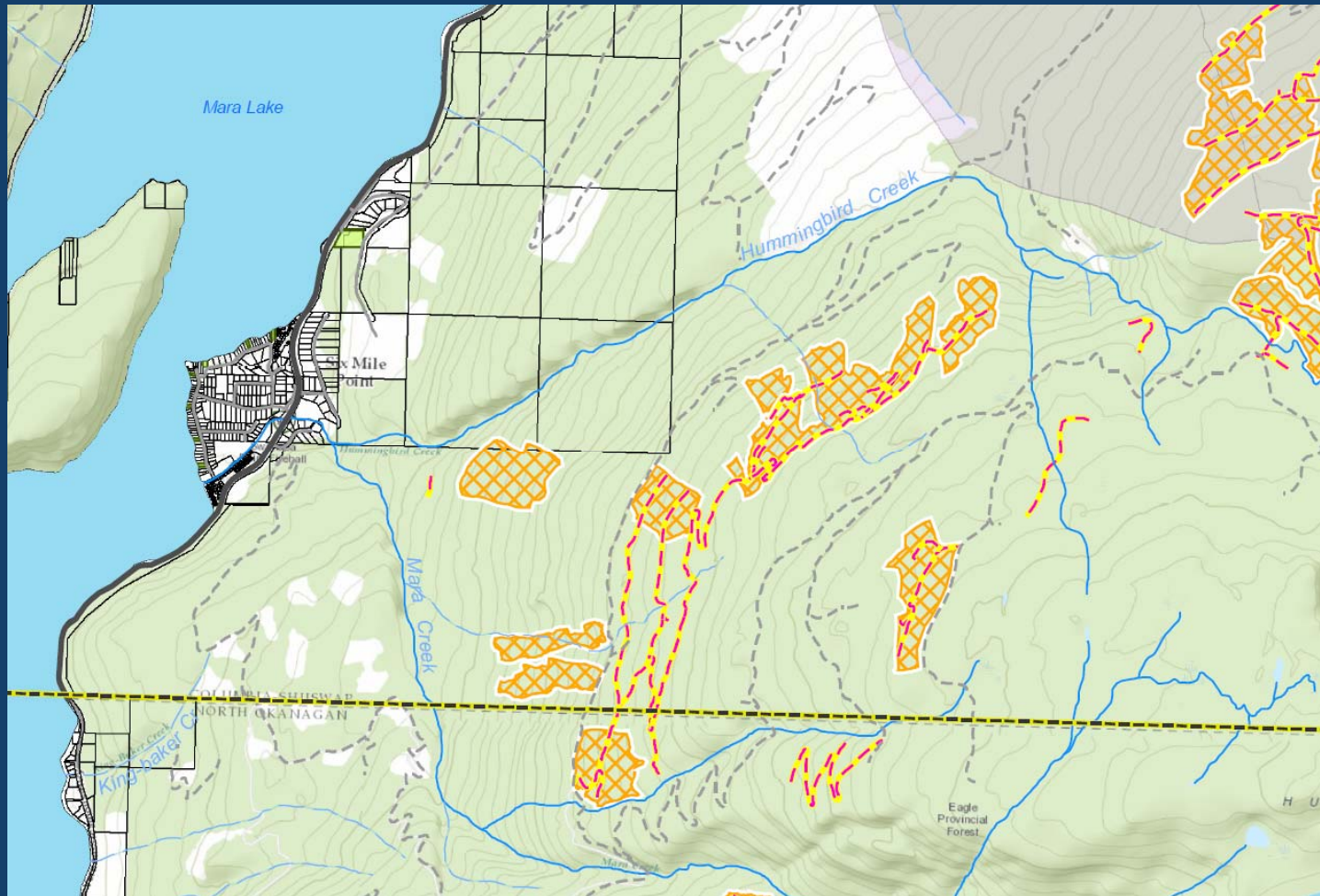
Locations – Chase Falkland Rd.



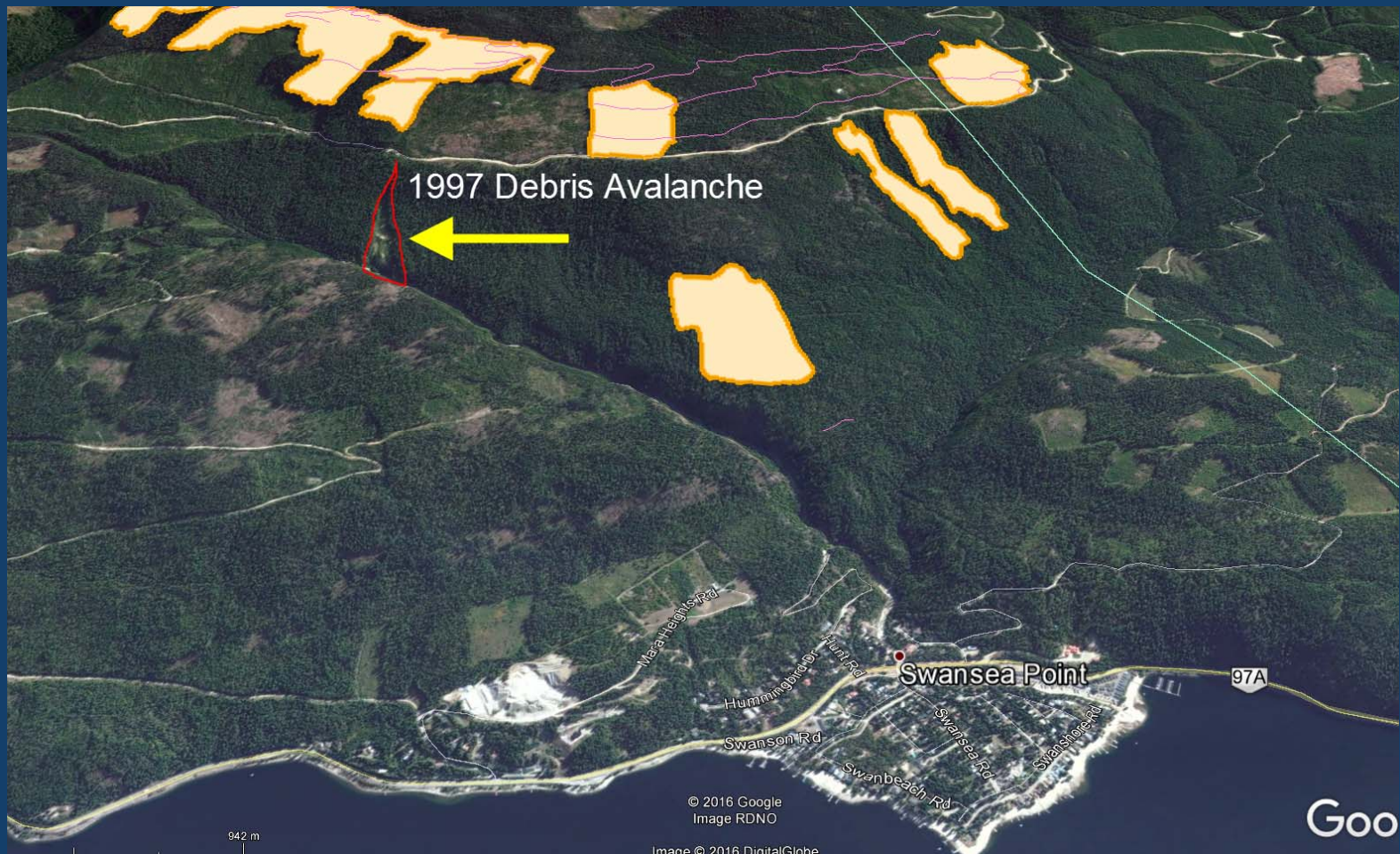
Locations – Area E



Locations - Swansea Point (Hummingbird/Mara Creek)



Locations - Swansea Point (Hummingbird/Mara Creek)



Hummingbird Creek

The slope failure which occurred on the northwest slope of Hummingbird Creek on July 11, 1997 was initiated by the saturation of shallow colluvium overlying bedrock on steep terrain which has been classified as potentially unstable. It originated as a debris avalanche below a forest road culvert. Drainage area above the culvert had been artificially tripled.

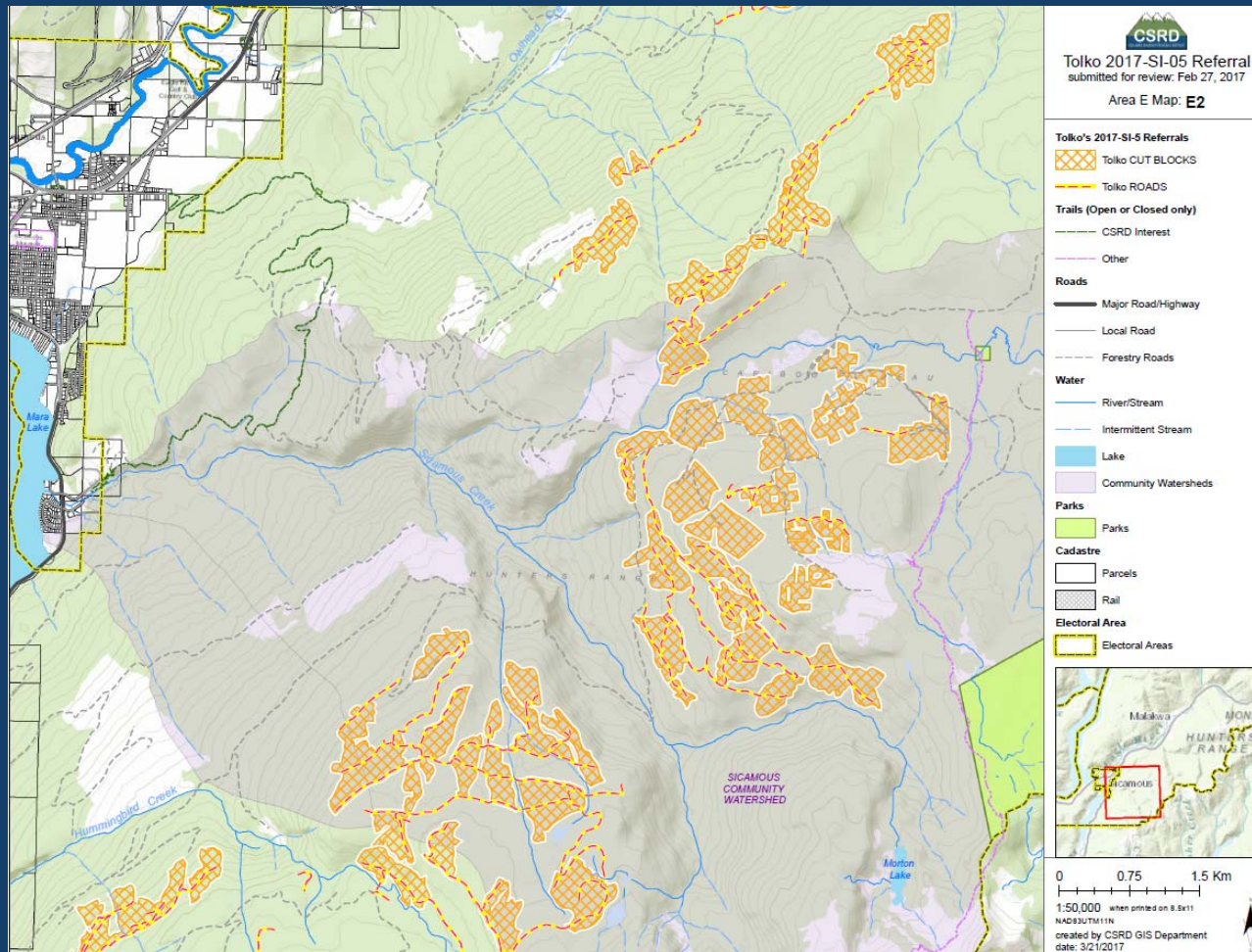
The 25,000 m³ debris avalanche triggered a debris flow that destroyed several homes, scoured roads, and caused extensive damage through inundation by silts and sands. Approximately 92,000 m³ of solid material was deposited during the event – the largest non-volcanic debris flow recorded in BC to date. *

Subsequent flash flood in 2012 caused further damage. Hwy 97 culvert replaced with bridge – channel repair work on Hummingbird Creek.

* Source: Hydrogeomorphic Hazards in the British Columbia Coast Mountains: Floods to Flows (Geertsema, 2006)



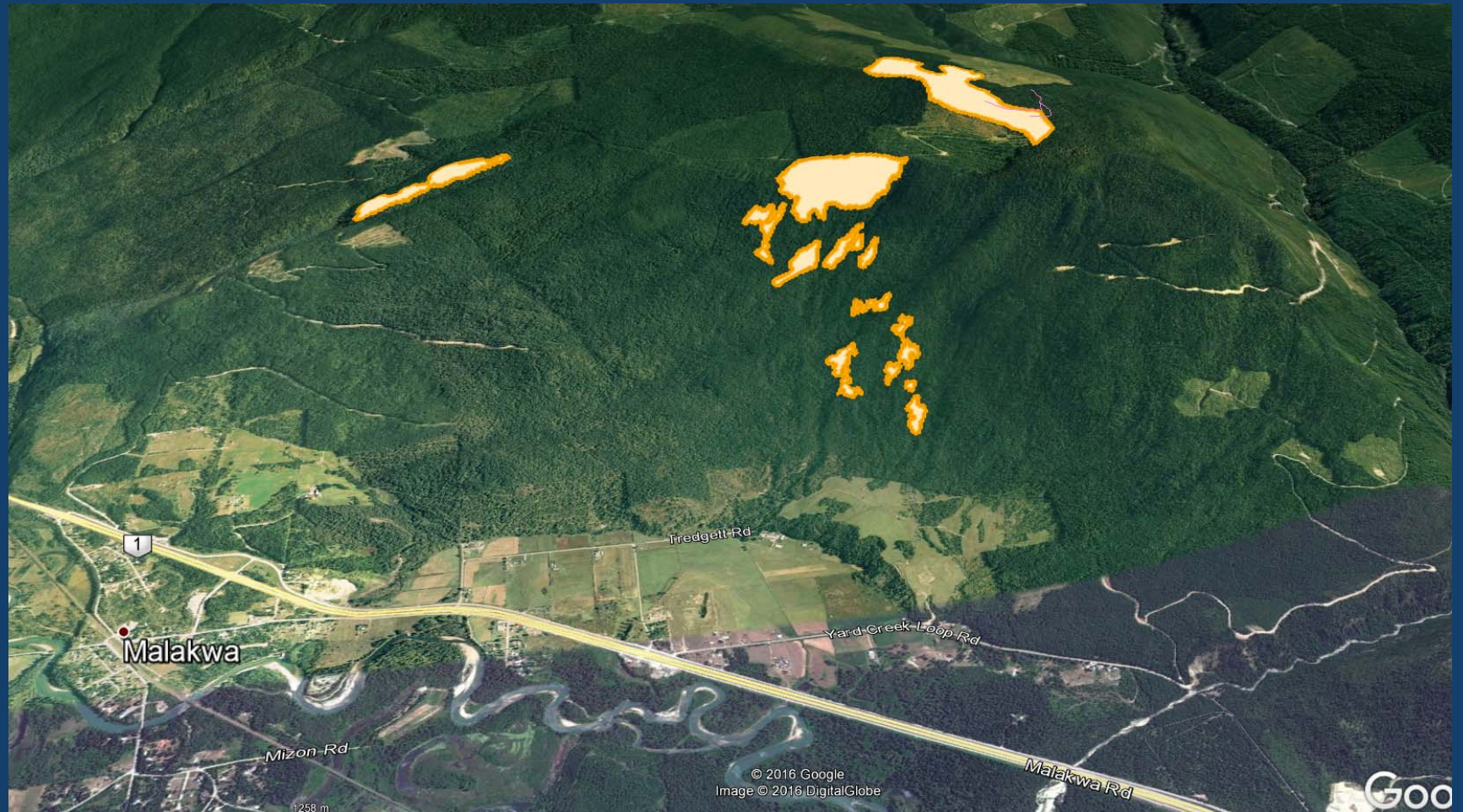
Locations – Sicamous Community Watershed



Locations – Sicamous Community Watershed



Locations – Malakwa



Public response

The CSRD has received numerous emails and phone calls from Swansea Pt. and Salmon Valley residents who are concerned about the potential impact from the new cutblocks and roads. Concerns have been raised about the risk of damaging landslides and debris flows (Swansea Pt.) and also the possible disturbance to domestic water sources and views (Salmon Valley).

Statement from Tolko

"We want to reassure residents that we are in the initial stages of planning and assessment and will not proceed with any new cutblocks and roads until our assessments are complete and indicate we can put a plan in place that allows us to conduct harvesting activities in a safe and sustainable manner."

Janice Lockyer, Tolko Communications Advisor

RECOMMENDATION:

THAT: the Board recommend to Tolko Industries Ltd. (Lumby) and the Minister of Forest Lands and Natural Resource Operations that a moratorium be placed on future logging activity in the Hummingbird Creek and Mara Creek basin due to the history of large debris flows in this area;

AND THAT: the Board request Tolko Industries Ltd. (Lumby) to hold public engagement meetings in Sicamous and Falkland to provide information and answer questions regarding the Forest Stewardship Plan amendments.