

LP Malakwa-2017/2018 Fir Beetle Harvest

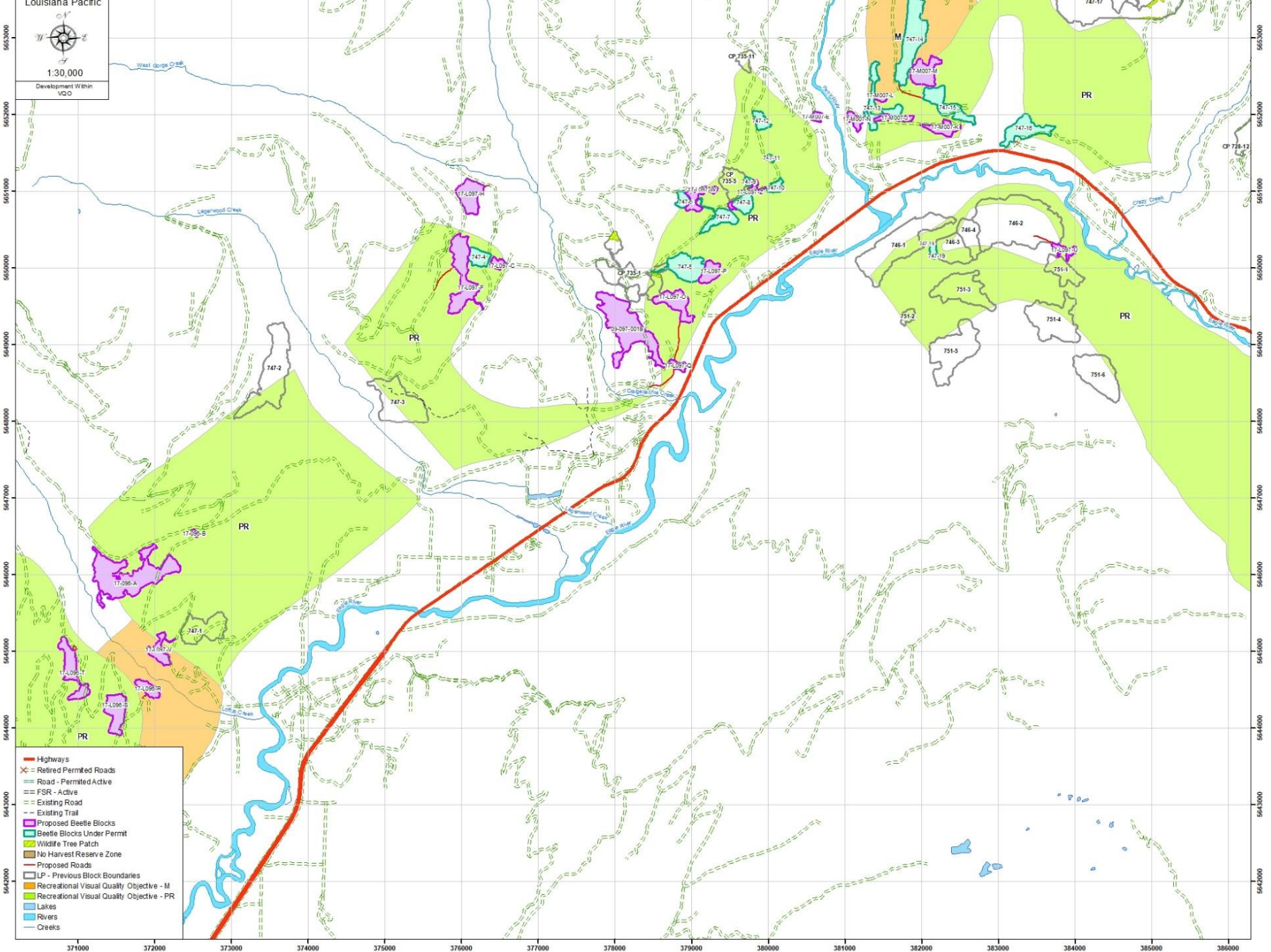
- **Beetle info**
- **Map of Beetle harvest areas**
- **Map of Bark beetle management program 2017**
- **treatments**

Douglas Fir Bark Beetle Harvest





1:30,000
Development Within
VCO



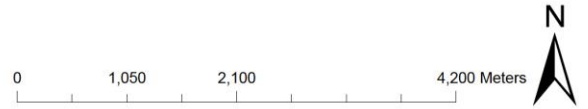
- Highways
- Retired Permitted Roads
- Road - Permitted Active
- FSR - Active
- Existing Road
- Existing Trail
- Proposed Beetle Blocks
- Beetle Blocks Under Permit
- Wildlife Tree Patch
- No Harvest Reserve Zone
- Proposed Roads
- LP - Previous Block Boundaries
- Recreational Visual Quality Objective - M
- Recreational Visual Quality Objective - PR
- Lakes
- Rivers
- Creeks

5632000
5622000
5612000
5602000
5592000
5582000
5572000
5562000
5552000
5542000
5532000
5522000
5512000
5502000
5492000
5482000
5472000
5462000
5452000
5442000
5430000
5420000

5632000
5622000
5612000
5602000
5592000
5582000
5572000
5562000
5552000
5542000
5532000
5522000
5512000
5502000
5492000
5482000
5472000
5462000
5452000
5442000
5430000
5420000

371000 372000 373000 374000 375000 376000 377000 378000 379000 380000 381000 382000 383000 384000 385000 386000

Douglas Fir Bark Beetle Control Program FLA18669



Legend

Beetle program source

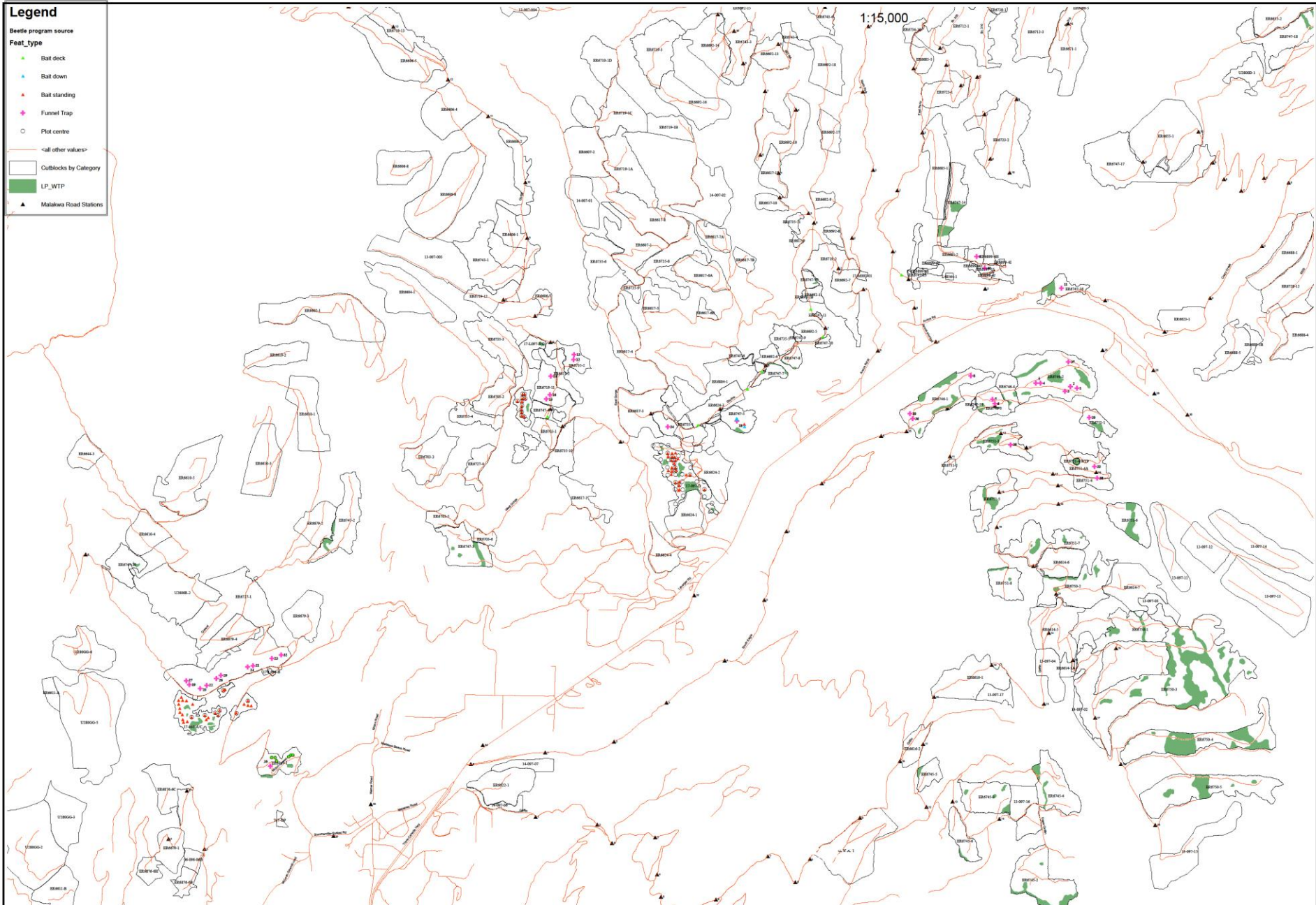
Feat_type

- Ball deck
- Ball down
- Ball standing
- Funnel Trap
- Plot centre
- all other values-

Outblocks by Category

- LP_WTP

Malakwa Road Stations



Life Cycle: Douglas-fir beetle

Most of the attacks will occur between April and early June

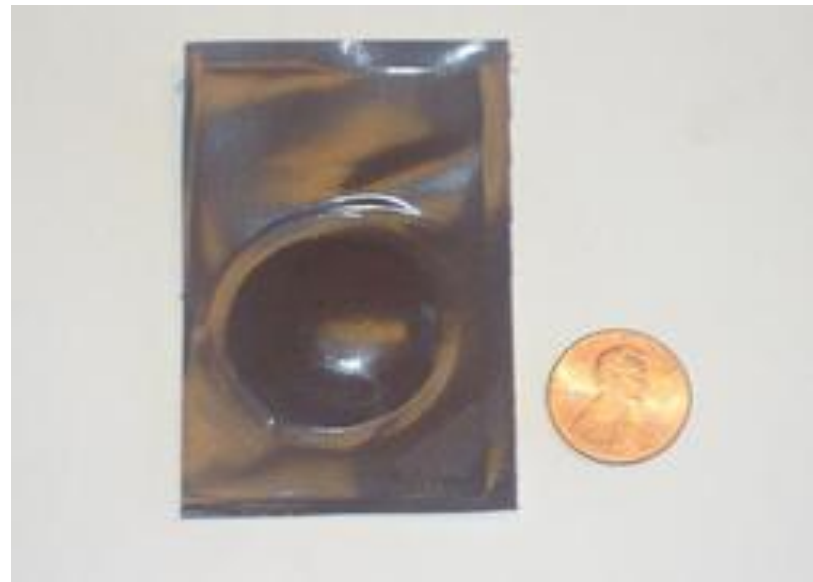
Egg Galleries

Larval stage in summer and fall

Overwintering as adults



Bait traps



MCH repellent pouches

Info available on Bark beetle management and how to procure repellent

Examples of the treatments are on the side table to view (in the Malakwa School Gym).

The repellent is quite expensive – they recommend 2-3/tree and currently cost approx. \$2.50 each (a large part of that is shipping so it pays to buy in bulk.) They only last one season out in the field but unused tabs can be kept in the freezer for use the following spring.

Talk to Brenda if you want further information or contact these companies:

WestGreen Global Technologies in Langley, B.C.

<http://www.westgreenglobaltechnologies.com/>

Synergy Semiochemicals in Burnaby B.C.

<https://semiochemical.com/bark-beetles/>

FUEL MANAGEMENT – OKANAGAN SHUSWAP TSA

- **2017 worst Fire Season since 1950's.**
- **Ministry of Forests assessing risks of fire near communities and will develop plans for fuel management and fuel break harvesting to reduce hazards.**
- **Work with forest licensees and communities.**