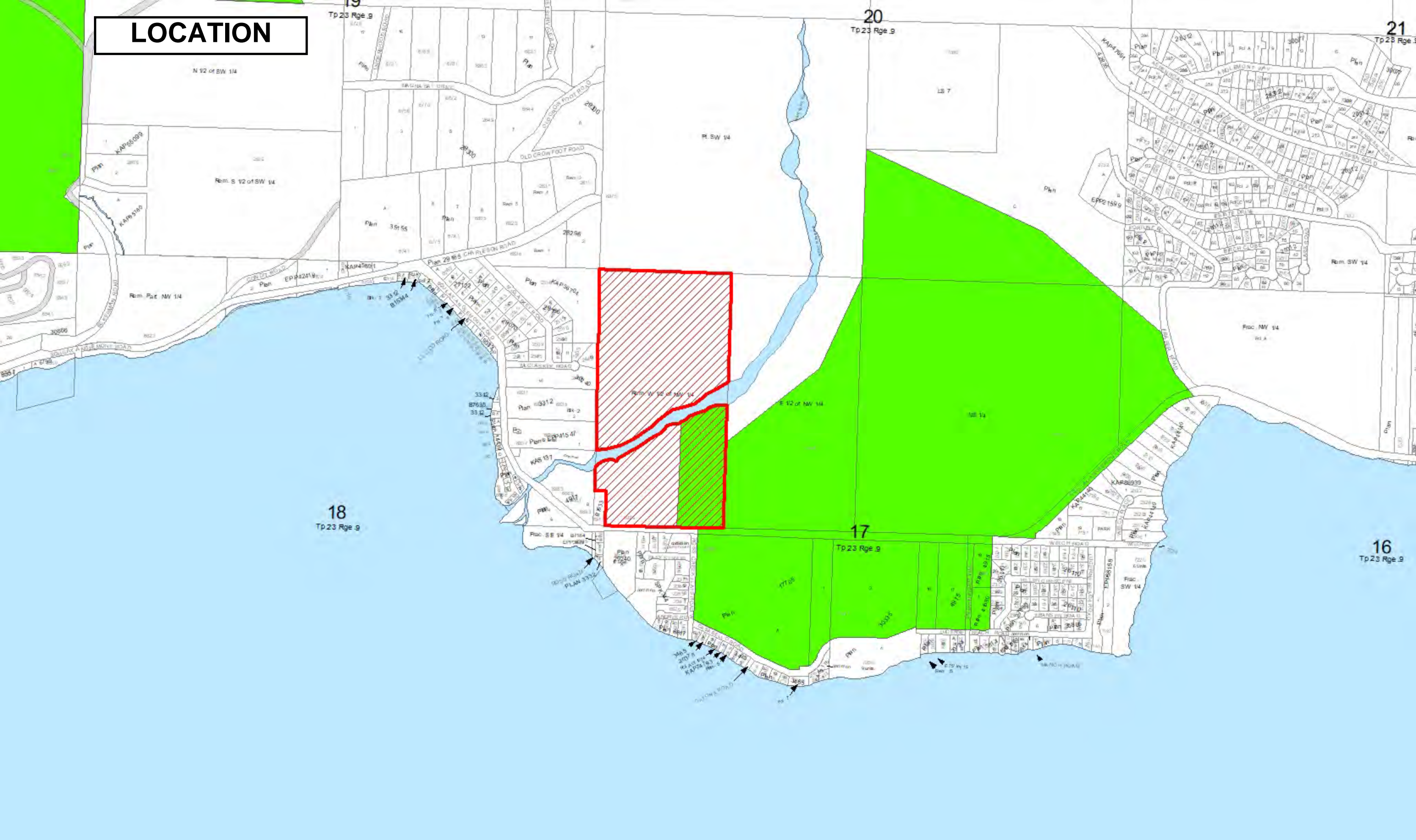
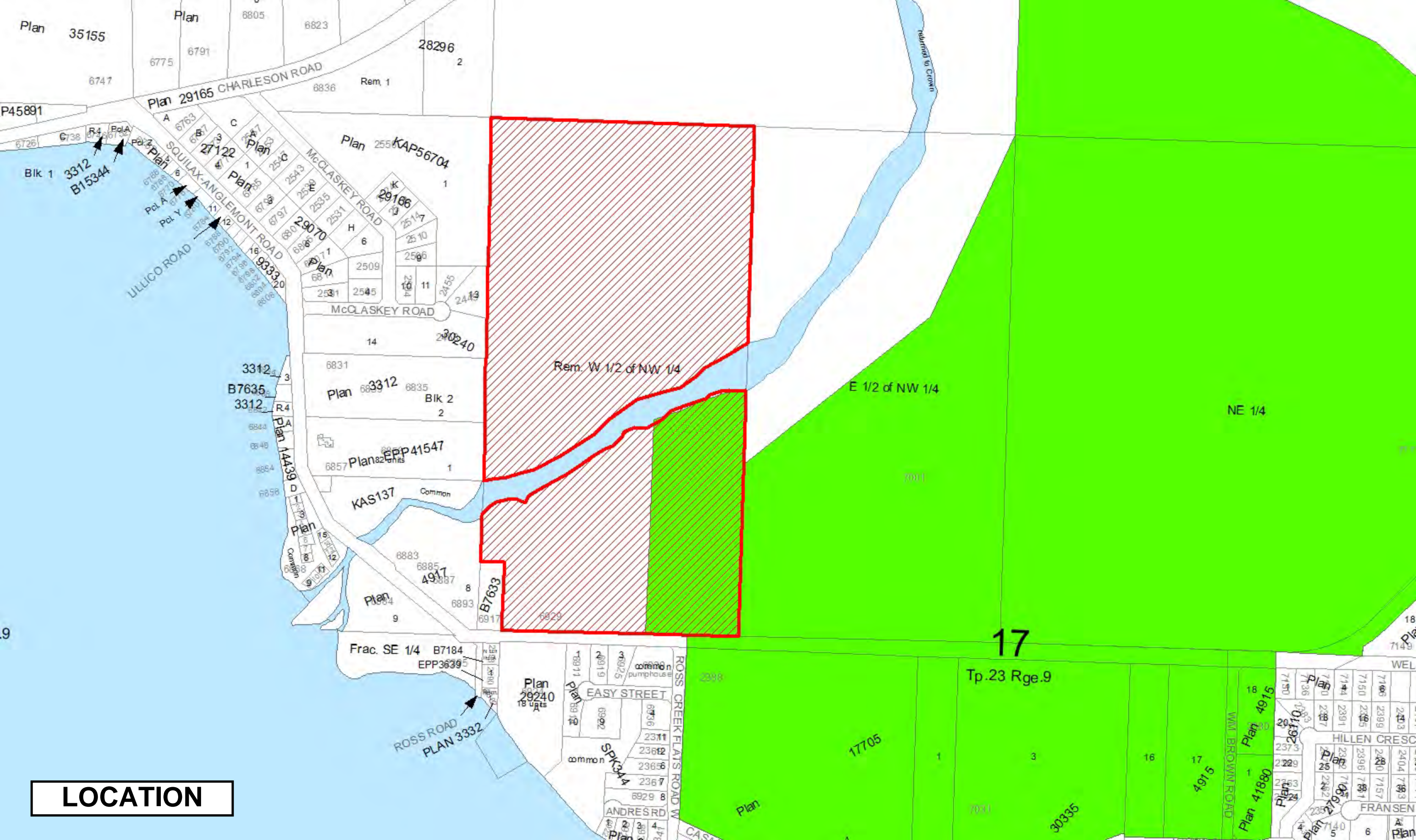


LOCATION





Rem. W 1/2 of NW 1/4

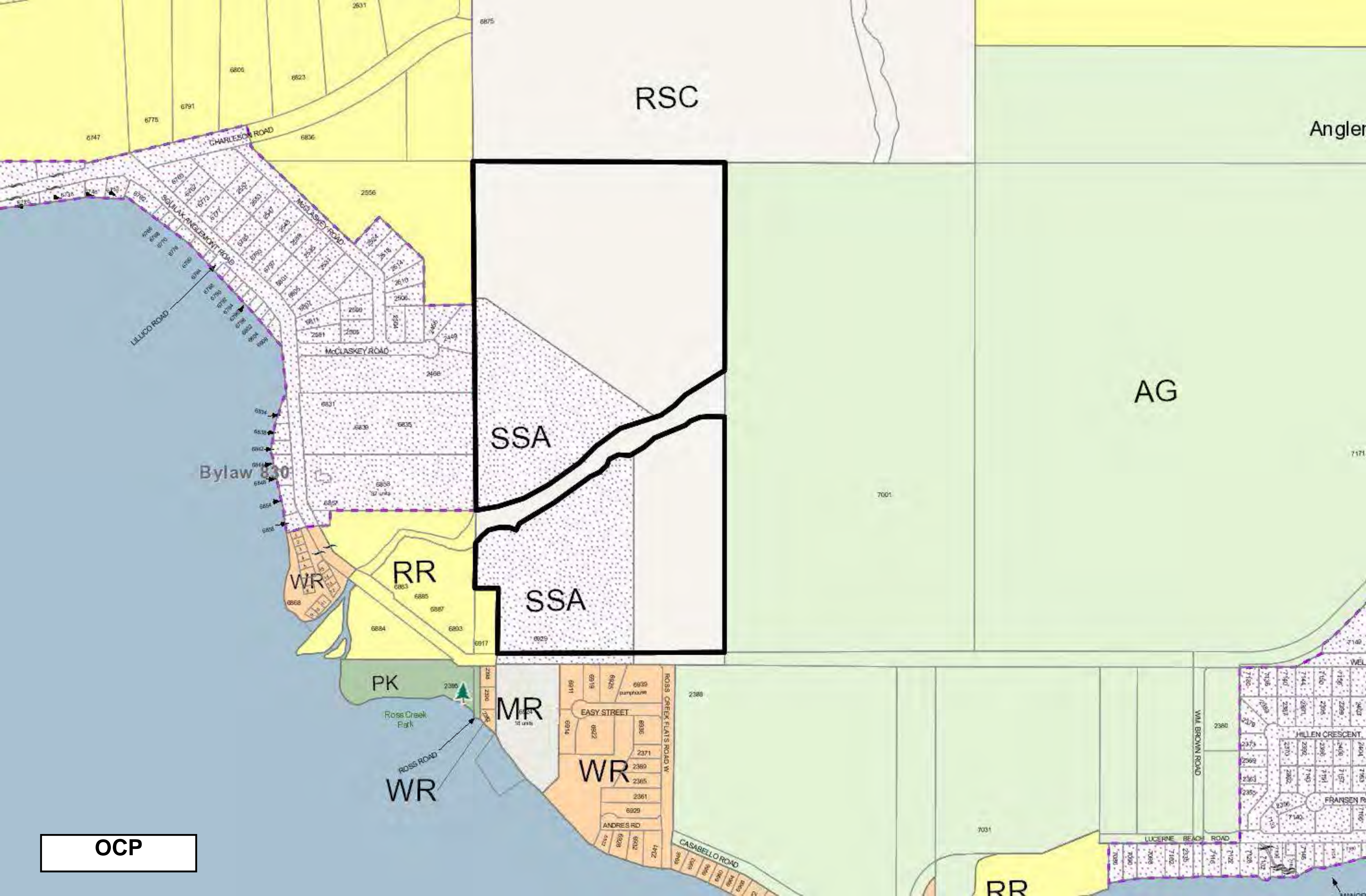
E 1/2 of NW 1/4

NE 1/4

17

Tp.23 Rge.9

LOCATION



RSC

Angler

AG

SSA

SSA

WR

RR

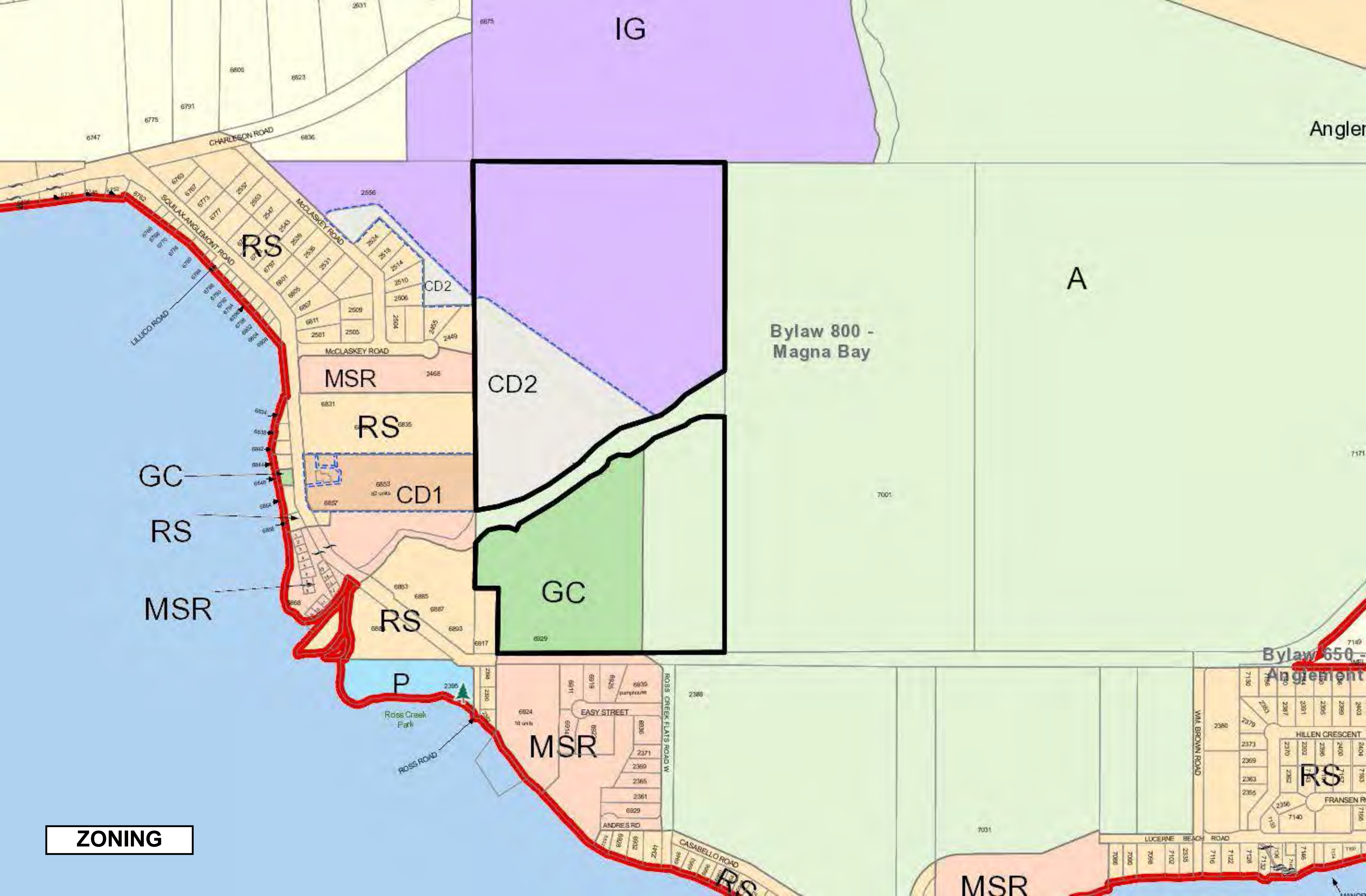
PK

MR

WR

OCP

RR



IG

Anglen

A

Bylaw 800 -
Magna Bay

CD2

MSR

RS

CD1

GC

RS

GC

RS

MSR

P

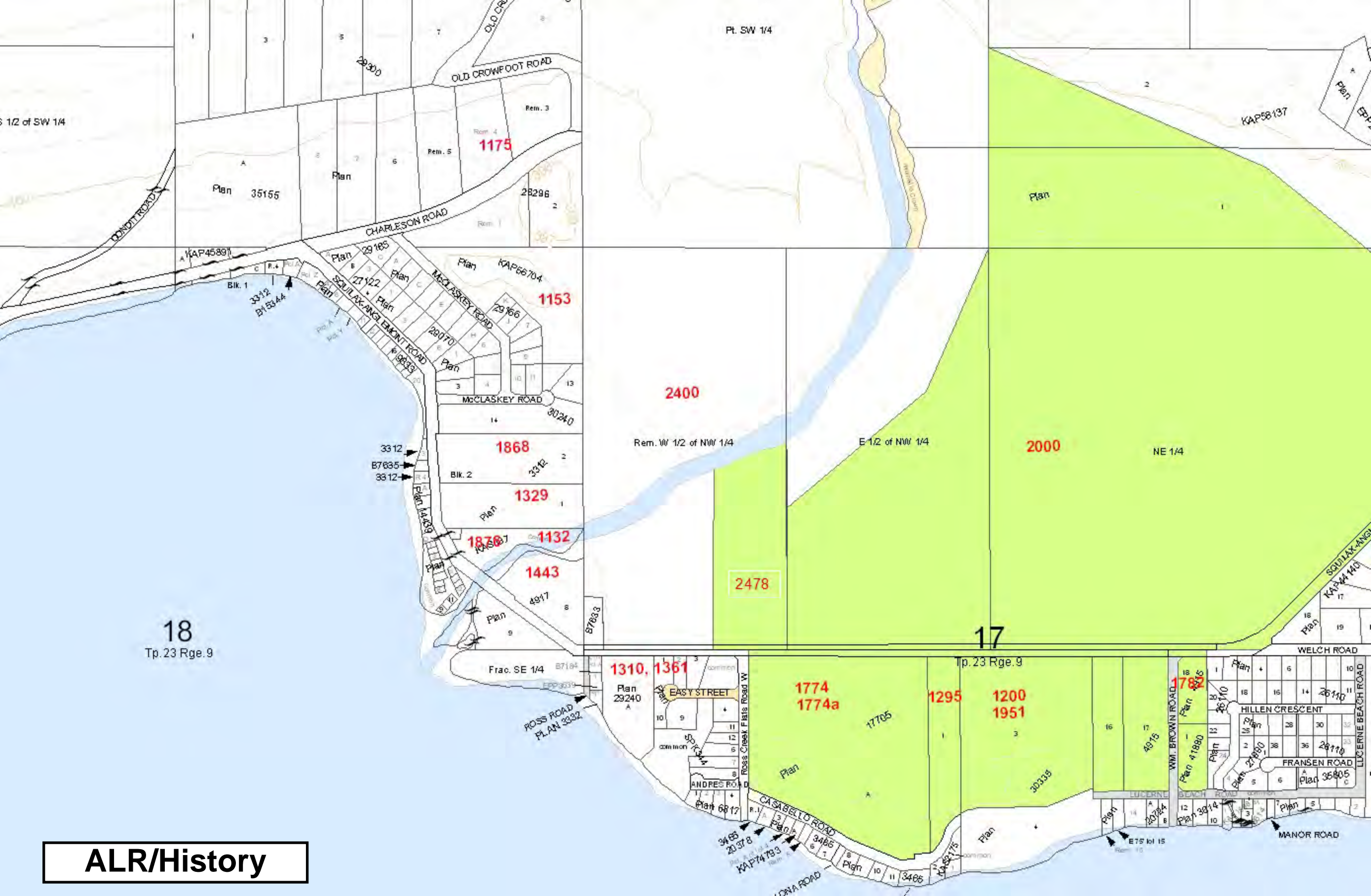
MSR

Bylaw 650 -
Anglemont

RS

ZONING

MSR



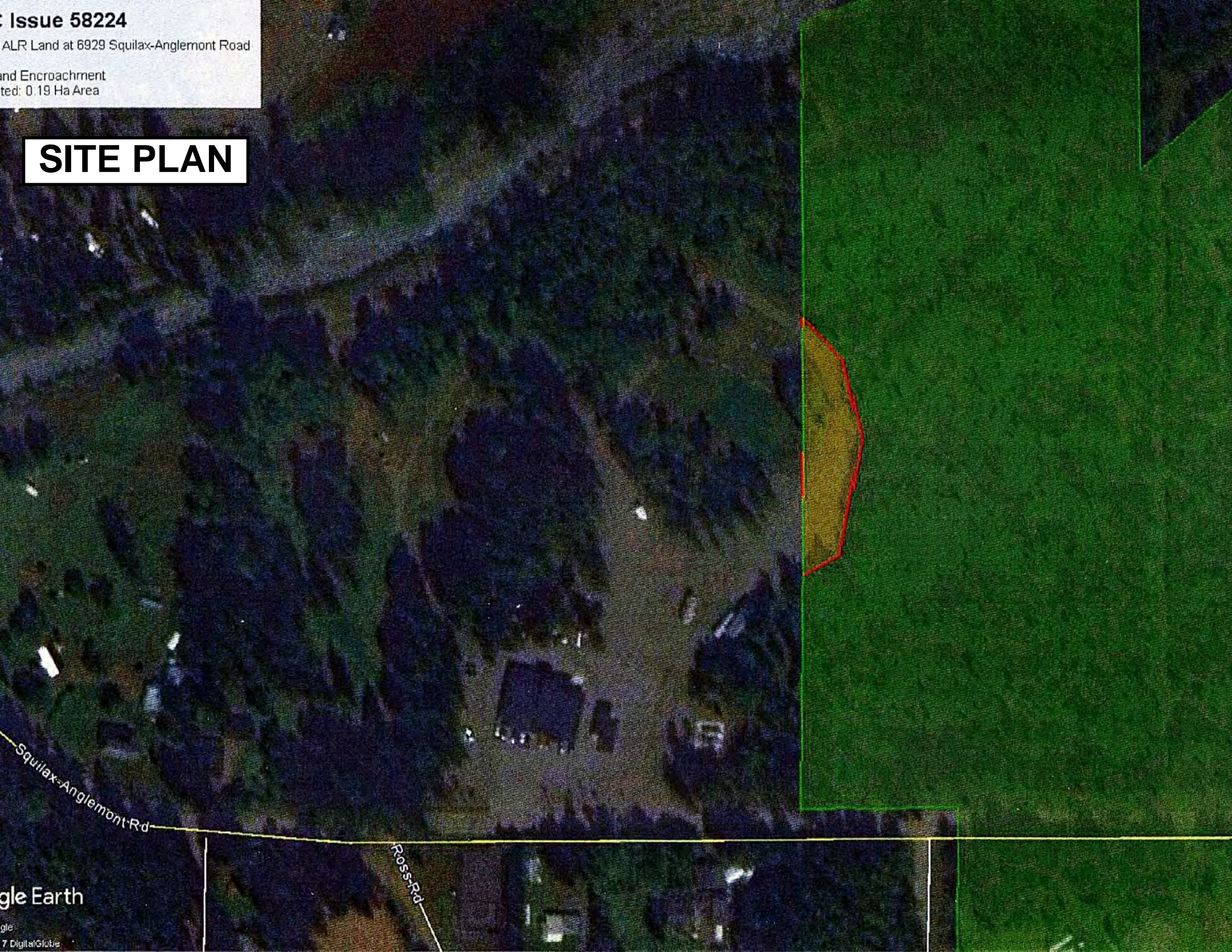
18
Tp. 23 Rge. 9

17
Tp. 23 Rge. 9

ALR/History

Issue 58224
ALR Land at 6929 Squilax-Anglemont Road
and Encroachment
dated: 0.19 Ha Area

SITE PLAN

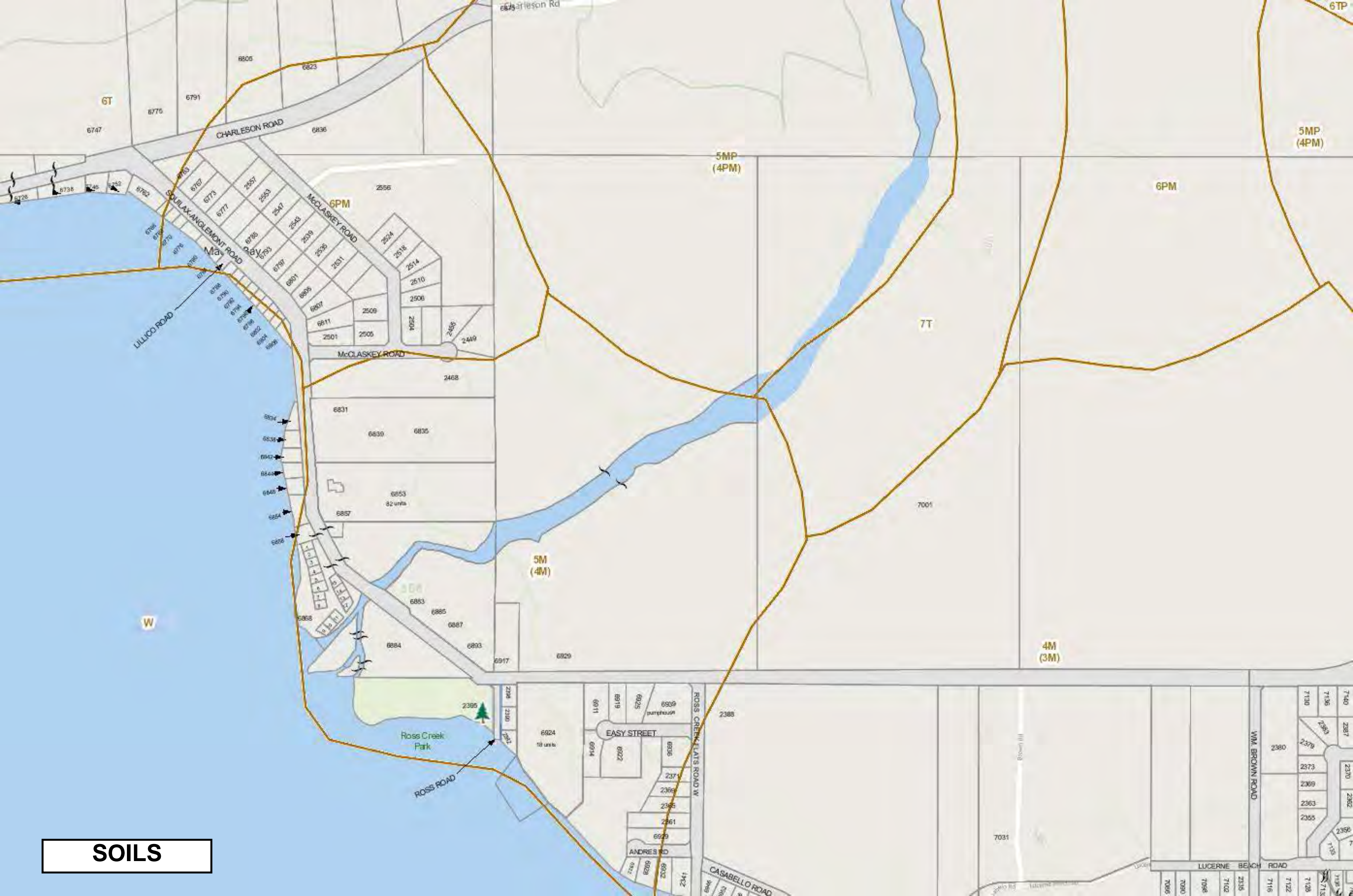


Squilax-Anglemont Rd

Ross Rd

Google Earth

© 2007 DigitalGlobe



SOILS



ORTHO

McCLASKEY ROAD

2468

6831

6839

6835

6853

82 units

6857

7001

6883

6885

6887

6884

6893

6917

6929

2395



2398

2390

2389

6924

18 units

6911

6919

6925

6939

pumphouse

2388

EASY STREET

ROSS CREEK FLATS ROAD

6914

6922

6936

2371

ORTHO

ROSS CREEK FLATS ROAD

PHOTO OF SITES

