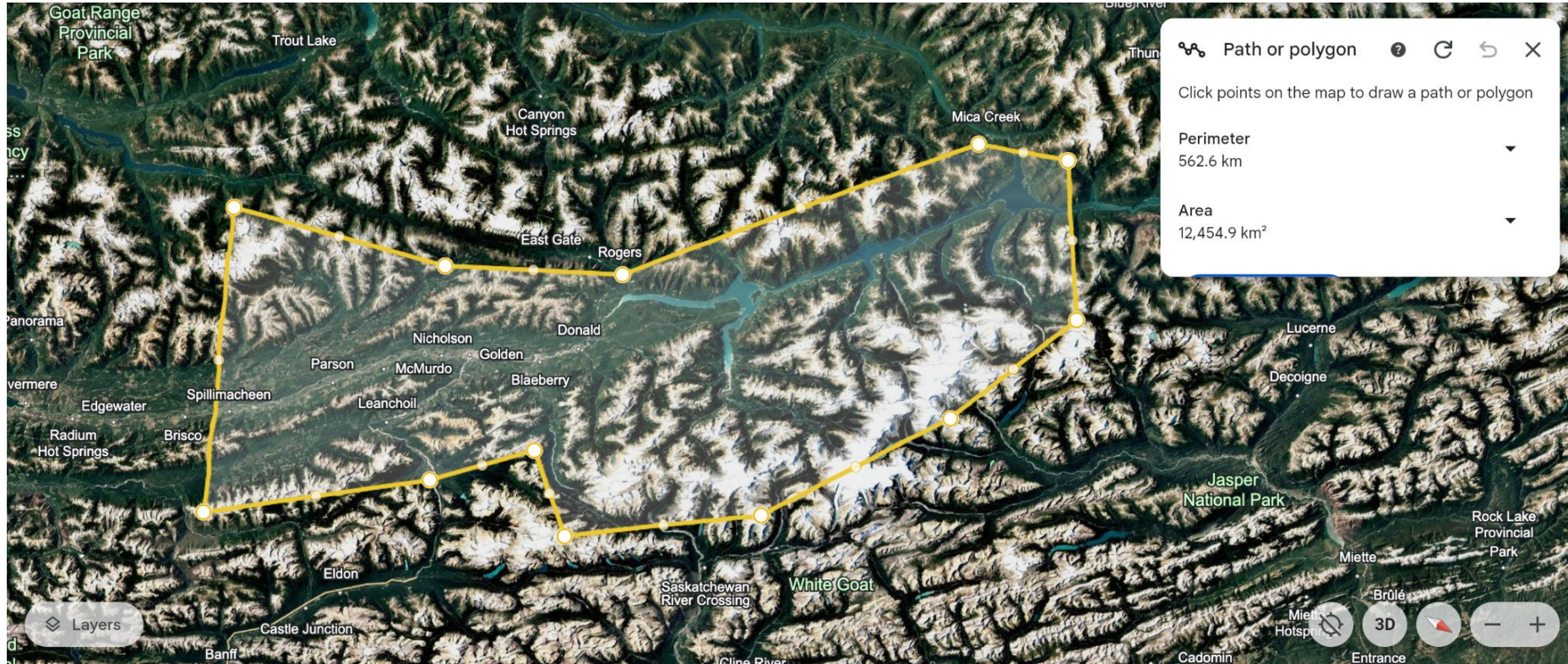


Golden and District Search and Rescue

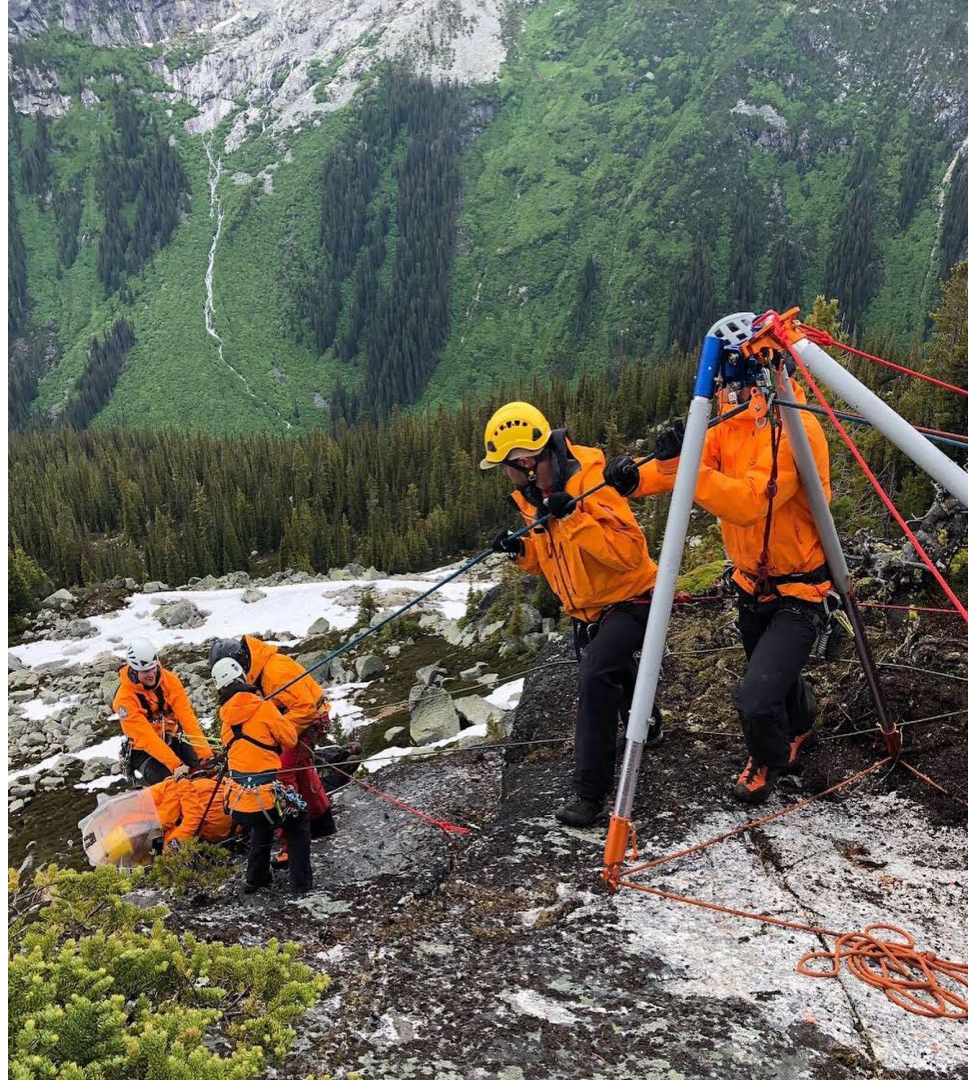


Operational Area



Capabilities

- Mountain Rescue
- Avalanche Rescue
- Rope Rescue
- Flat and Swiftwater Rescue
- Helicopter Rescue, including CDFL
- Ground Search
- Drone Search
- First Aid
- MCI
- Natural Disaster Aid



2021

26 tasks

579.2 volunteer task hours

12 'winter' tasks (based on season or activity)

14 'summer' tasks

Tasked 18 times by RCMP, 8 times by BCEHS

TASKS

4 skier/snowboarder tasks

6 sledder tasks

4 mountain biker tasks

2 RCMP dive team tasks

2 despondent subject tasks

1 paraglider task

1 rock climber task

1 hiker task

1 fall into river task

1 mutual aid task

1 Kicking Horse weather evac

1 false Spot activation

1 stuck/stranded

3 calls used CDFL

8 calls were non-technical heli

3 calls used e-bikes



2022

42 tasks

916.9 volunteer task hours

20 'winter' tasks (based on season or activity)

22 'summer' tasks

Tasked 30 times by RCMP, 12 times by BCEHS

TASKS

7 skier/snowboarder tasks

5 sledder tasks

5 mountaineer/climber tasks

4 mountain biker tasks

4 mutual aid tasks

3 paraglider/parachuter tasks

2 despondent subject tasks

2 hiker tasks

2 medical while backcountry camping tasks

2 stuck/stranded

2 false Apple activation

1 false Spot/inReach activation

1 SUP task

1 snowshoe task

1 heli ELT activation

11 calls used CDFL

16 calls were non-technical heli

1 call used a quad

1 call used jetboat

3 avalanche-related

4 swiftwater





2023

40 tasks

580.7 volunteer hours

23 'winter' tasks (based on season or activity)

17 'summer' tasks

Tasked 29 times by RCMP, 9 times by BCHES,
2 times by Parks Canada

TASKS

11 skier/snowboarder tasks

5 sledder tasks

4 climber tasks

3 biker tasks

3 hiker tasks

2 false alarms

2 false Spot activations

2 stuck

1 ice climber task

1 paraglider task

1 downed plane task

1 dementia patient task

1 kayaker task

1 driving-related task

1 camper task

1 ultra marathon runner task

9 calls used CDFL

17 calls were non-technical heli

Avalanche rescue dogs deployed twice

Snowmobiles deployed twice

Jetboat deployed once

6 avalanche-related

1 swiftwater

2024

40 tasks

992.1 volunteer hours

14 'winter' tasks (based on season or activity)

26 'summer' tasks



TASKS

8 hiker tasks

7 skier/snowboarder tasks

4 climber tasks

4 camper tasks

2 sledder tasks

2 stuck

2 rafter tasks

2 boater tasks

1 false alarm

1 suicide task

1 paraglider task

1 driving-related task

1 biker task

1 wildfire evacuation task

1 ATVer task

1 missing person task

1 ice climber task

5 calls used CDFL

16 calls were non-technical heli

4 calls used dogs to search

2 calls used jetboat

2 calls used sleds

1 call used e-bikes

4 calls were swiftwater-related

2 calls were avalanche-related



<u>INCOME</u>	<u>2022</u>	<u>2023</u>	<u>2024</u>
Training room/gear rental	\$1,500	\$10,952	\$9,970
Storage rental	\$1,125	\$1,600	\$400
DONATIONS	\$60,083	\$43,239	\$36,361
Fundraising	\$4,580	\$0	\$0
TASK REIMBURSEMENTS	\$58,938	\$59,167	\$47,478
GRANTS (including \$100,000 annually from the province)	\$312,455	\$160,018	\$212,238
Sales of old equipment	\$5,969	\$0	\$520
<u>Total Income</u>	<u>\$444,650</u>	<u>\$274,976</u>	<u>\$306,967</u>

CSRD-funded projects

Past:

New building to protect assets from theft and elements

\$50,000 of \$500,000

Landscaping of compound

\$10,000 of \$15,000

Future:

Asphalting in front of new building vehicle bays

Part of \$40,000 total

2026 full replacement of CDFL gear due to Transport Canada's requirement for service life
Part of \$300,000 total



Questions?

