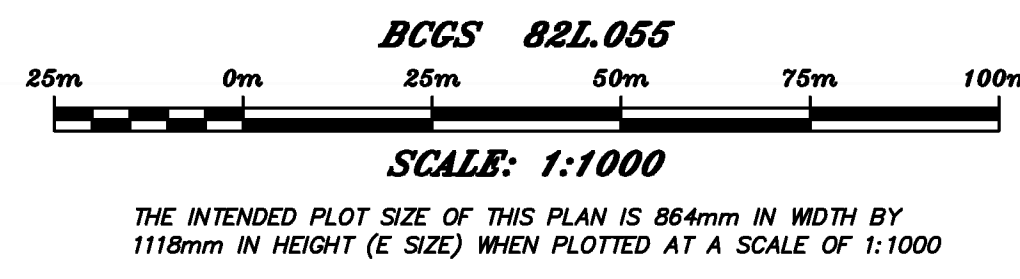


STATUTORY RIGHT OF WAY PLAN OVER PART OF:
1) THAT PART DISTRICT LOT 226 SHOWN ON PLAN A402 KAMLOOPS (FORMERLY OSOYOOS) DIVISION YALE DISTRICT AND
2) THAT PART OF DISTRICT LOT 150 SHOWN ON PLAN A402; KAMLOOPS (FORMERLY OSOYOOS) DIVISION YALE DISTRICT EXCEPT PLAN 29134
 PURSUANT TO SECTION 113 OF THE LAND TITLE ACT

PLAN EPP111993



BOOK OF REFERENCE	
DESCRIPTION	AREA
SRW PART DL 226	31.2m ²
SRW AREA 'A' PART REM DL 150	0.502 ha.
SRW AREA 'B' PART REM DL 150	0.101 ha.

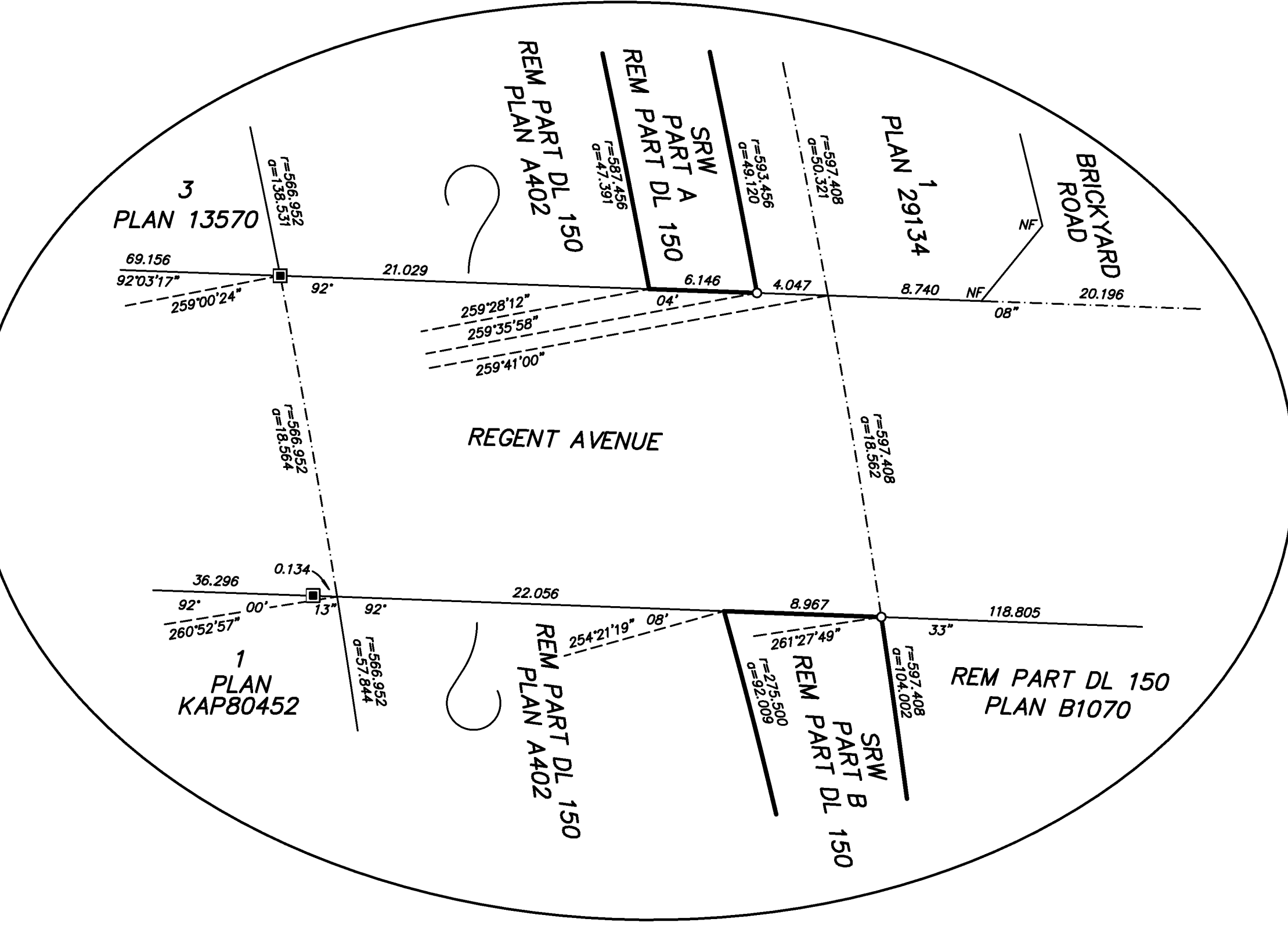
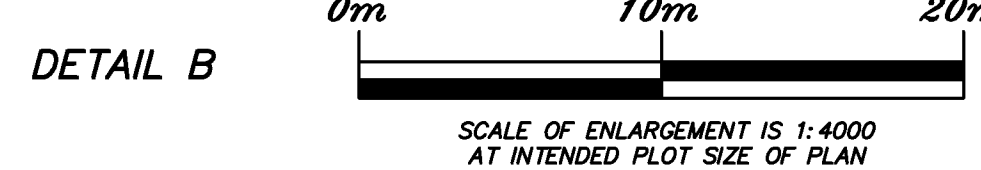
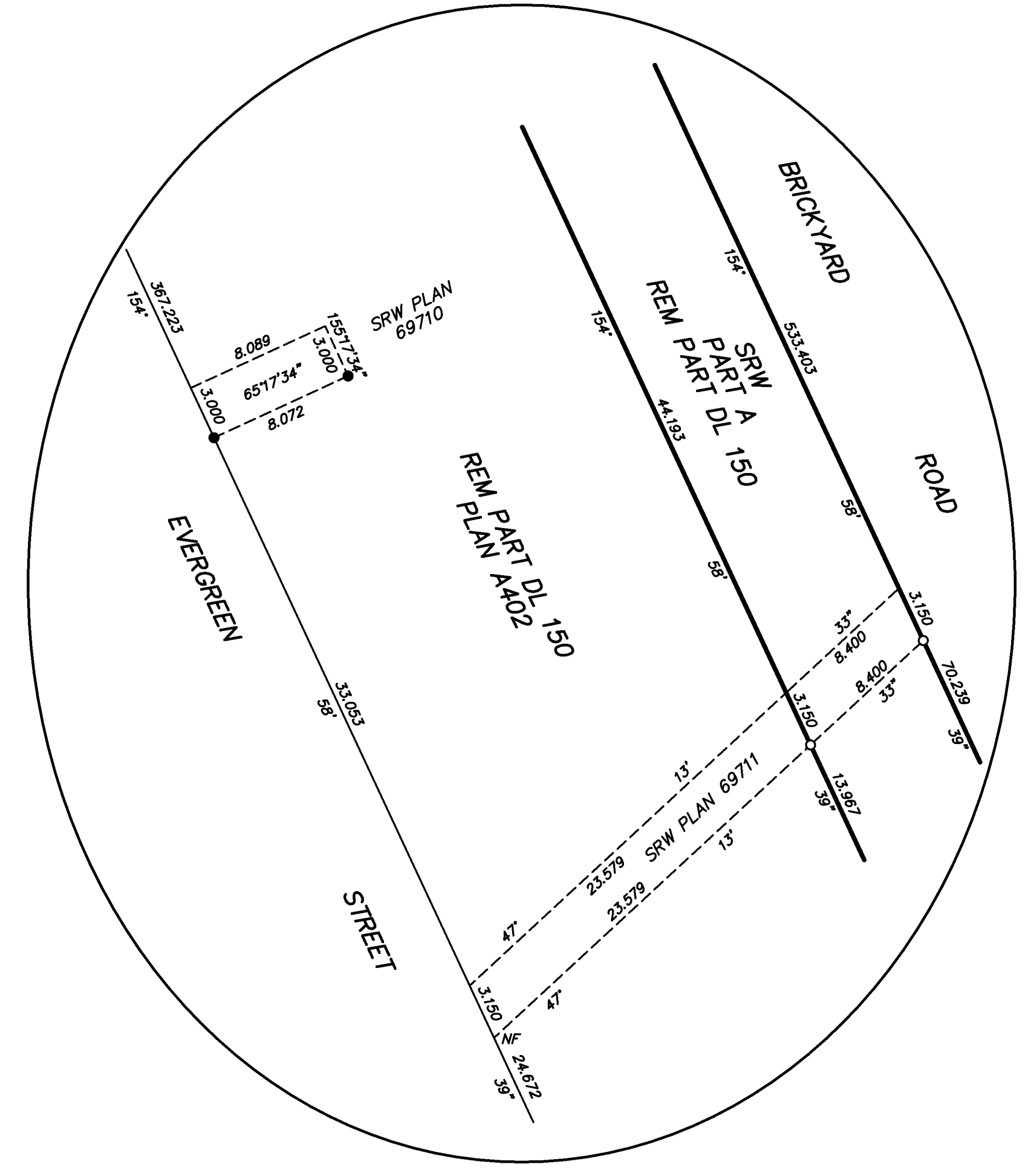
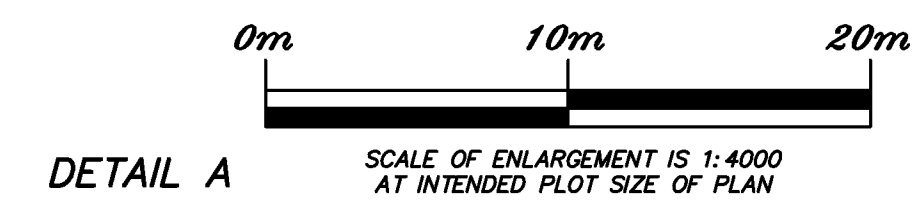
OP #174
 NAD83(CRS) 2002.0 - UTM ZONE 11
 UTM NORTHING: 5603798.729
 UTM EASTING: 347893.696
 ESTIMATED ABSOLUTE
 ACCURACY: 0.05m

LEGEND

GRID BEARINGS ARE DERIVED FROM GNSS OBSERVATIONS AND ARE REFERRED TO THE CENTRAL MERIDIAN OF UTM ZONE 11. THE UTM COORDINATES AND ESTIMATED ABSOLUTE ACCURACY ACHIEVED ARE DERIVED FROM SINGLE POINT POSITIONING TECHNIQUES USING THE PRECISE POINT POSITIONING (PPP) SERVICE OF NATURAL RESOURCES CANADA. THIS PLAN SHOWS HORIZONTAL GROUND-LEVEL DISTANCES UNLESS OTHERWISE SPECIFIED. TO COMPUTE GRID DISTANCES, MULTIPLY GROUND-LEVEL DISTANCES BY THE AVERAGE COMBINED FACTOR OF 0.9998286025. THE AVERAGE COMBINED FACTOR HAS BEEN DETERMINED BASED ON AN ELLIPSOIDAL ELEVATION OF 350 METRES. ALL DISTANCES ARE IN METRES AND DECIMALS THEREOF.

- DENOTES STANDARD IRON POST FOUND (SIP)
- DENOTES STANDARD IRON POST PLACED (SPP)
- DENOTES OLD PATTERN DOMINION IRON POST FOUND (DLSIP)
- DENOTES NON-STANDARD POST FOUND

THIS PLAN LIES WITHIN THE REGIONAL DISTRICT OF NORTH OKANAGAN. THIS PLAN SHOWS ONE OR MORE WITNESS POSTS WHICH ARE NOT SET ON THE TRUE CORNERS(S).



OP #186
 NAD83(CRS) 2002.0 - UTM ZONE 11
 UTM NORTHING: 5603276.227
 UTM EASTING: 348736.124
 ESTIMATED ABSOLUTE
 ACCURACY: 0.05m