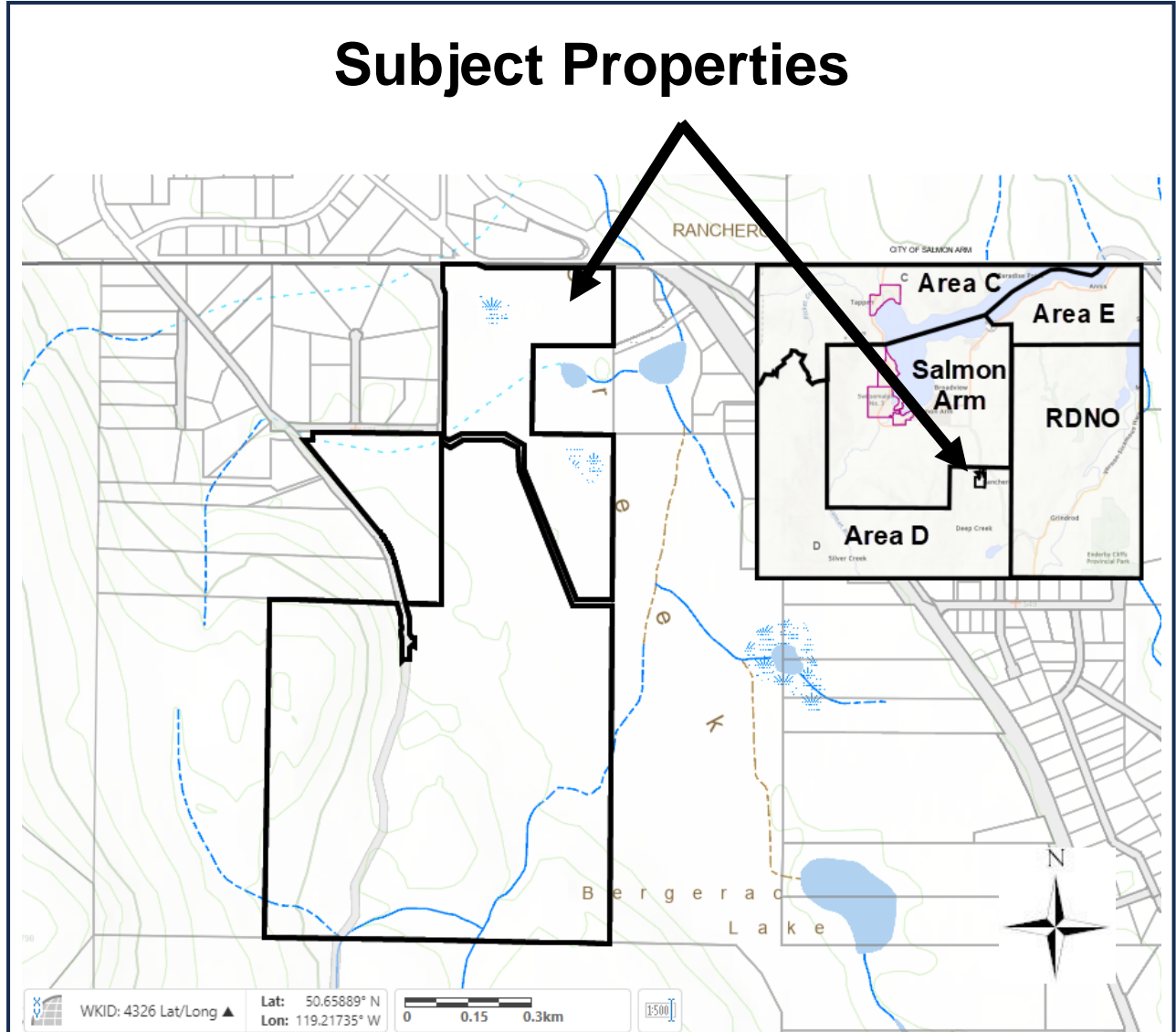
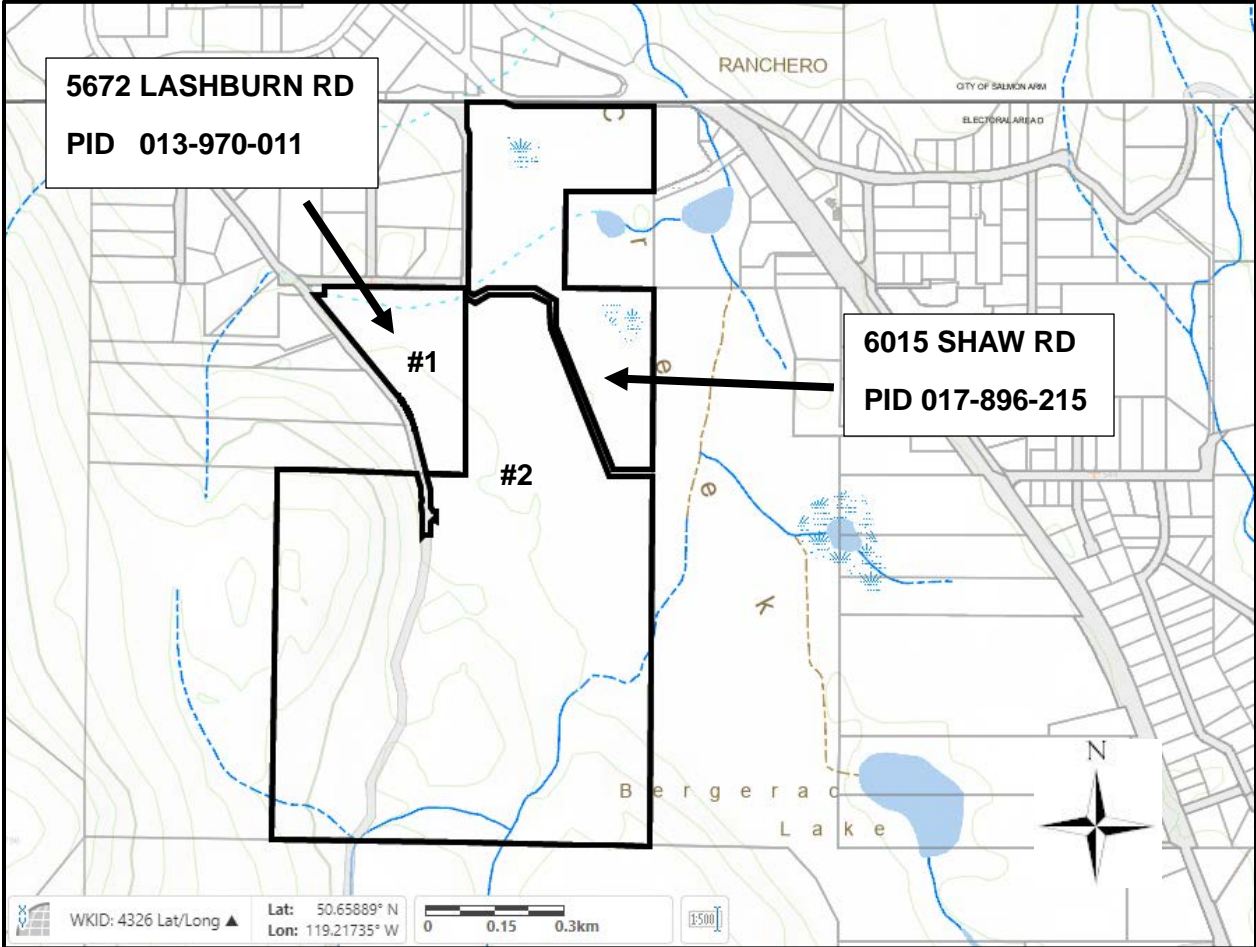


LOCATION MAP

Subject Properties

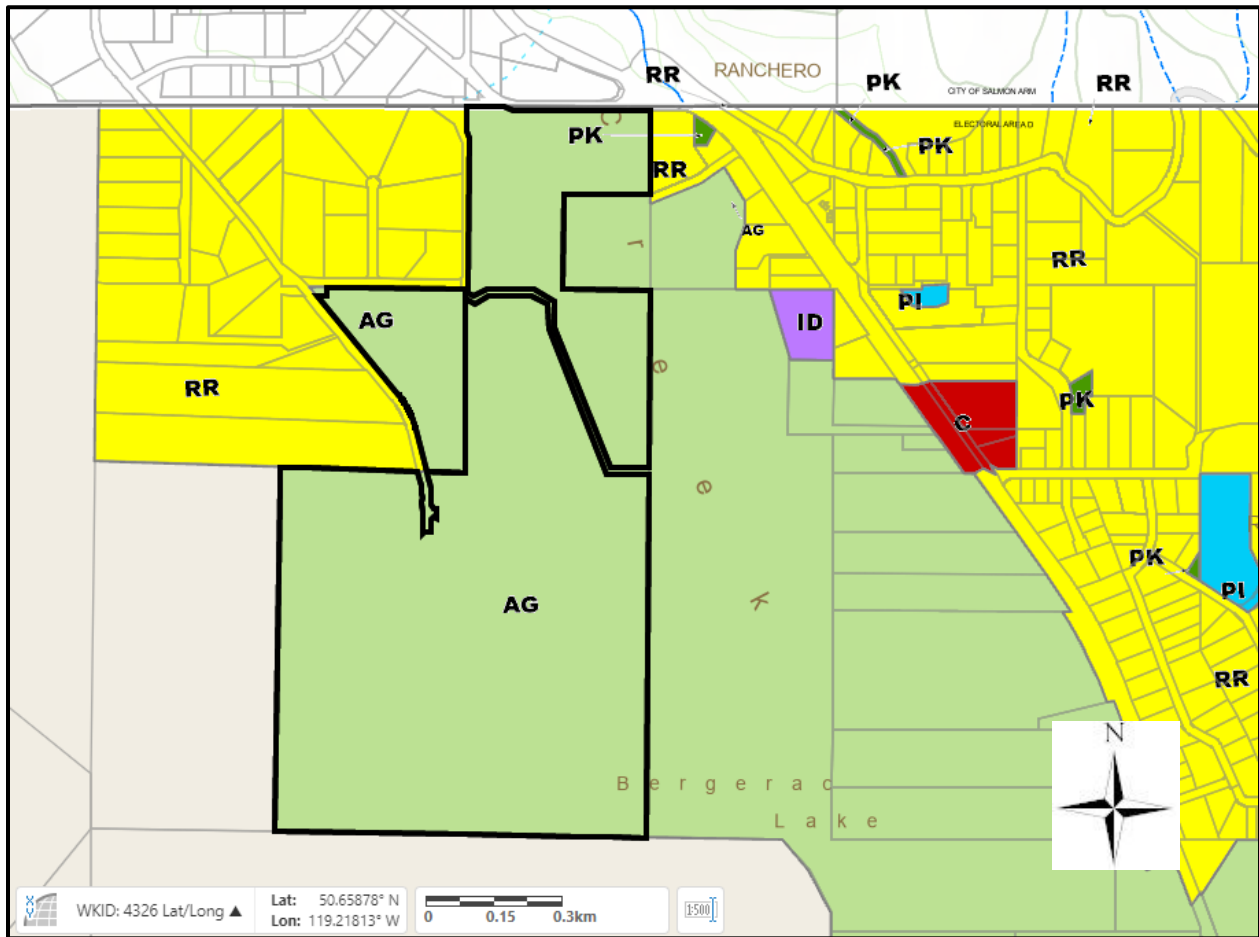


SUBJECT PROPERTIES



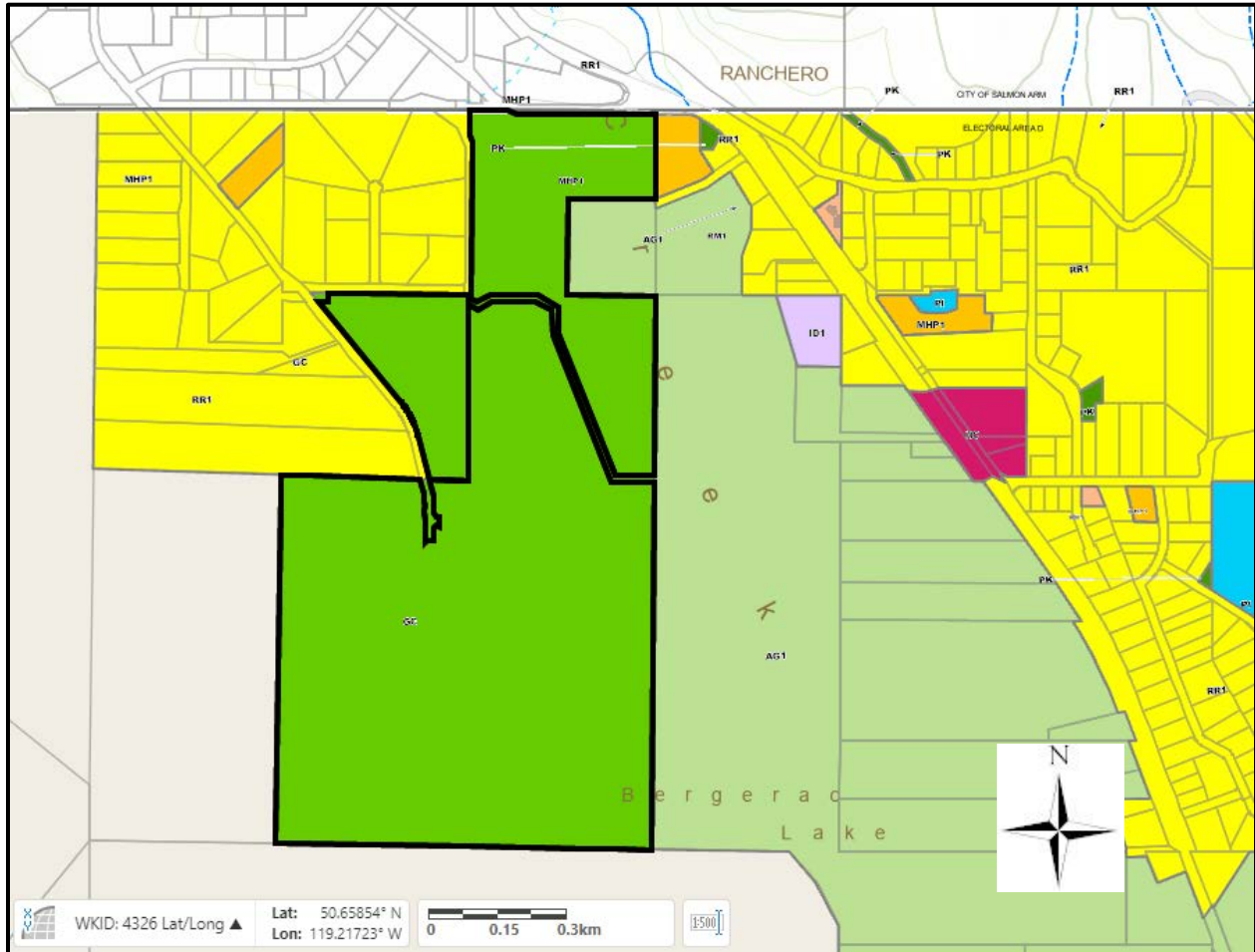
RANCHERO/DEEP CREEK OFFICIAL COMMUNITY PLAN BYLAW NO. 750

AG - Agriculture



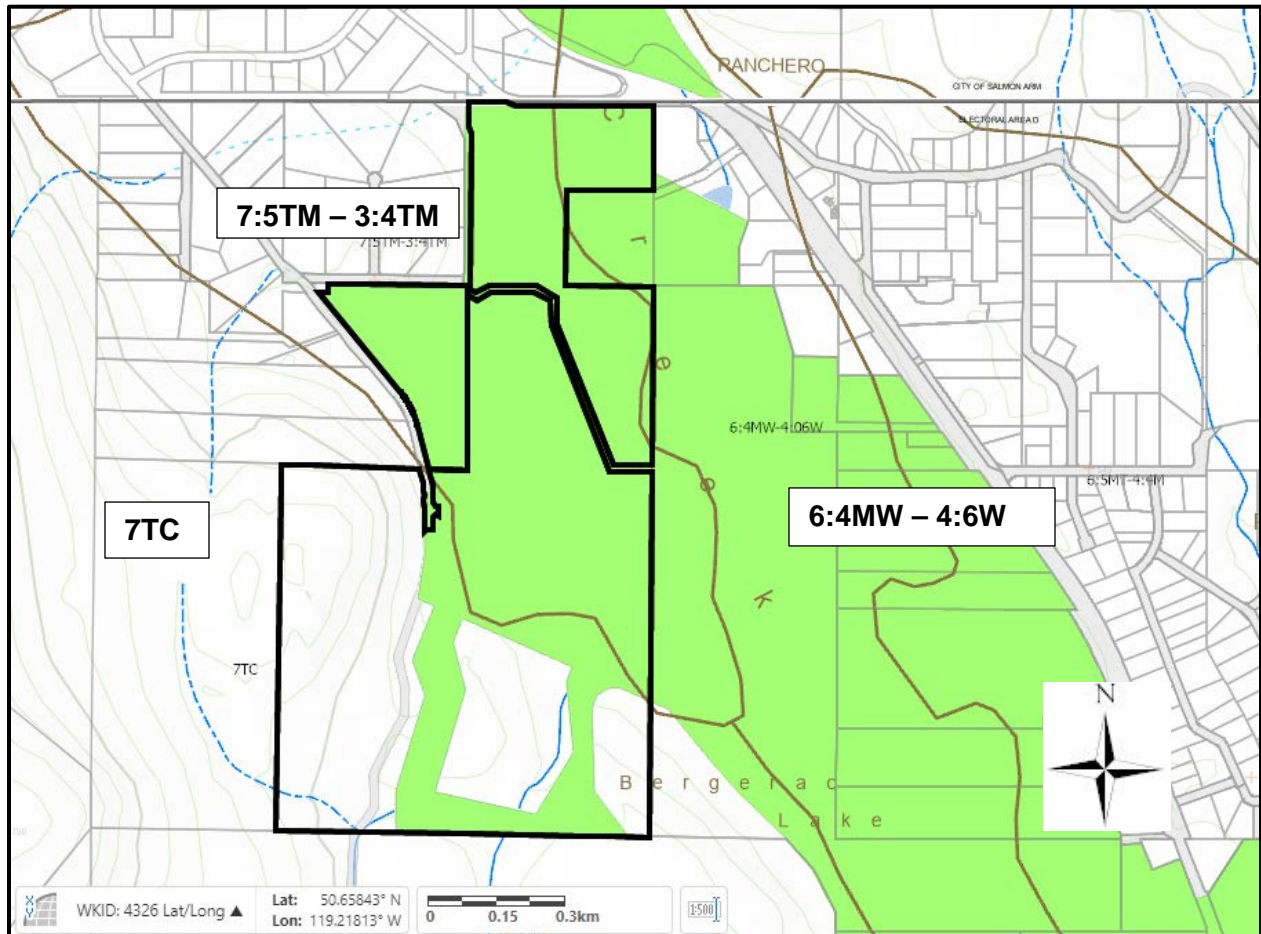
RANCHERO/DEEP CREEK ZONING BYLAW NO. 751

GC – Golf Course



AGRICULTURAL LAND RESERVE

Soil Capability – 7:5TM-3:4TM



AGRICULTURAL LAND COMMISSION APPLICATIONS

LC2296 (2004) & LC2328 (2005) Golf Course

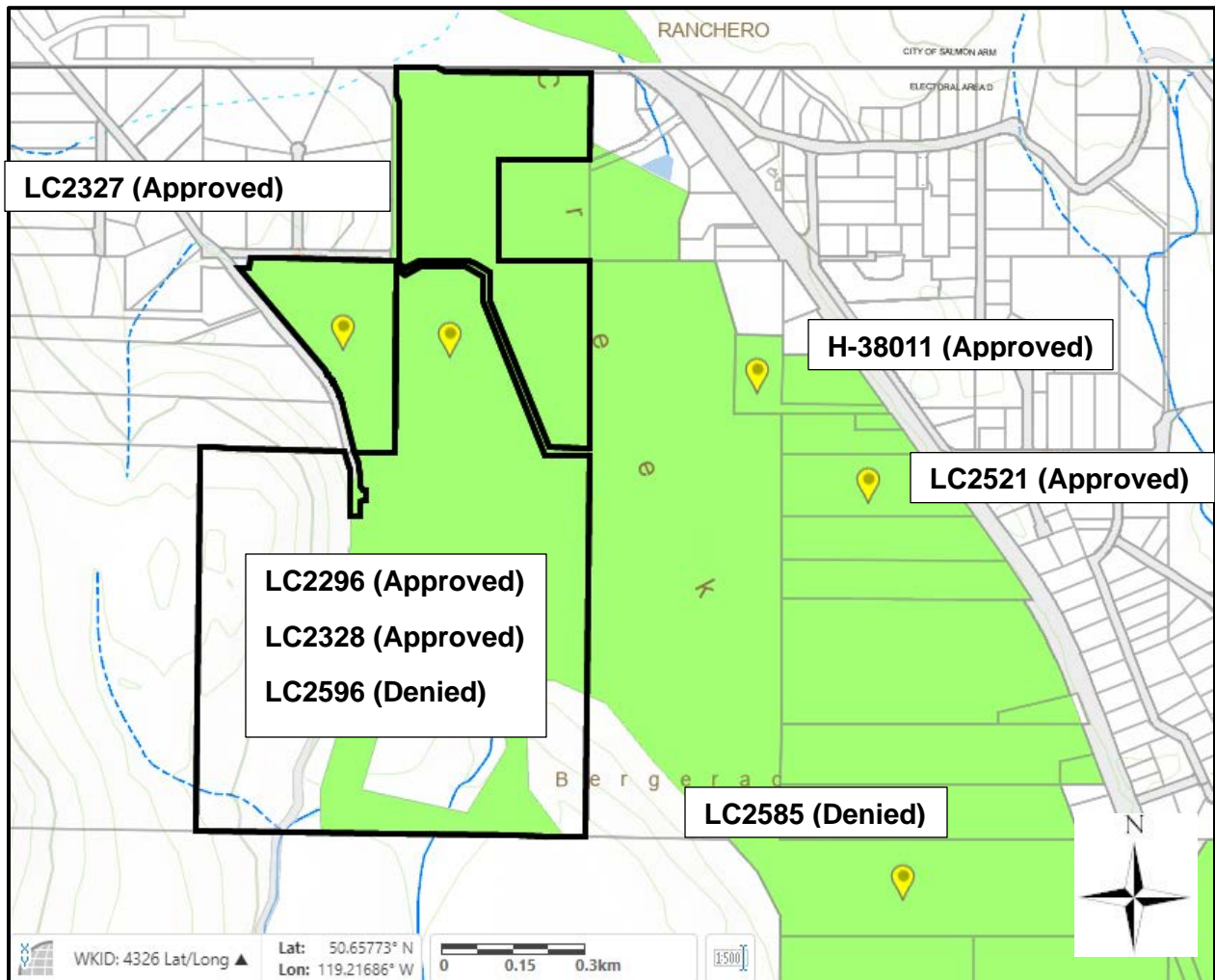
LC2327 (2006) Driving Range

H-38011 (2008) Subdivision

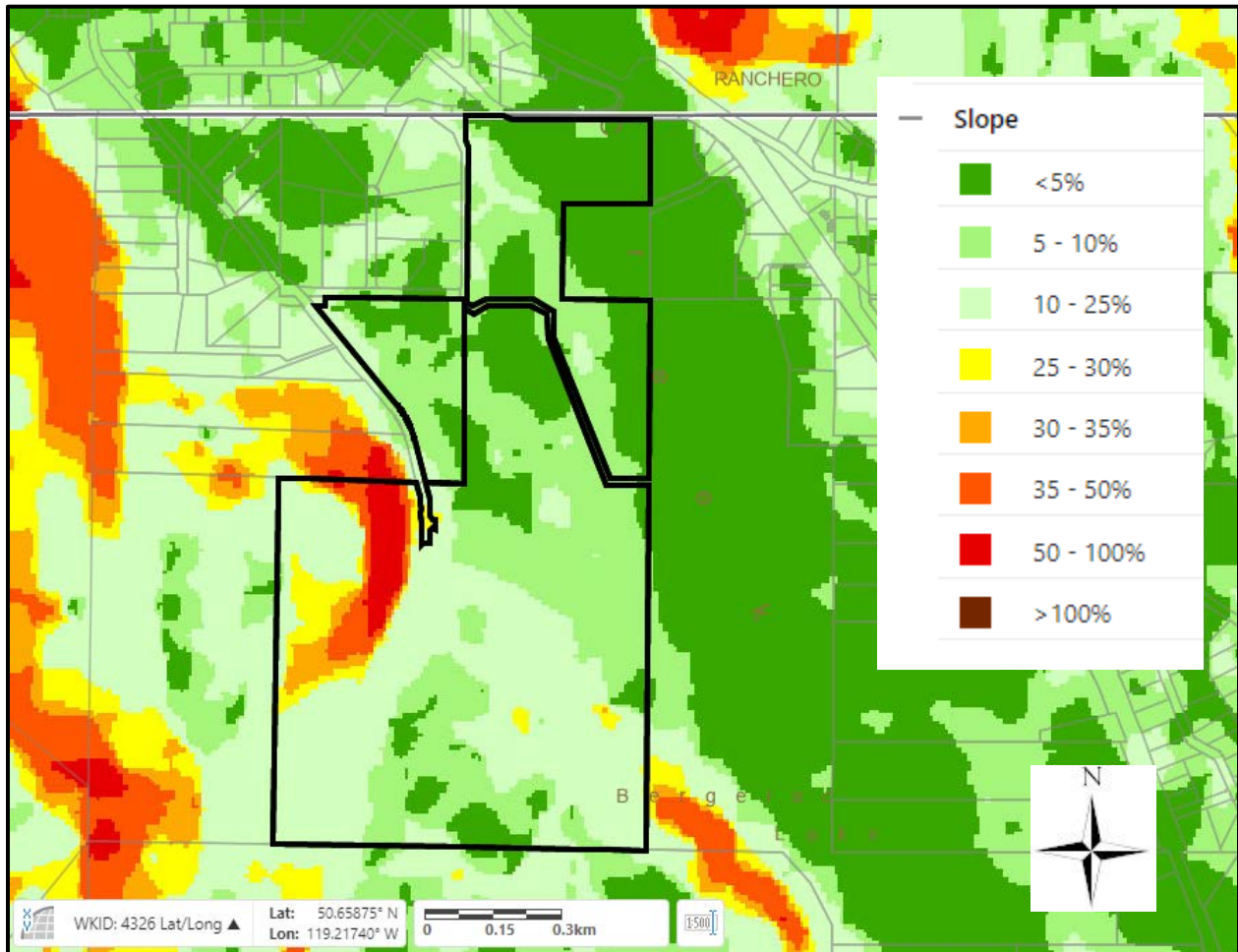
LC2521 (2016) Second Dwelling

LC2585 (2021) Subdivision

LC2596 (2022) Subdivision



SLOPE



ORTHO IMAGERY – CSRD 2023

Approximate Subdivision/Boundary Adjustment (Red)



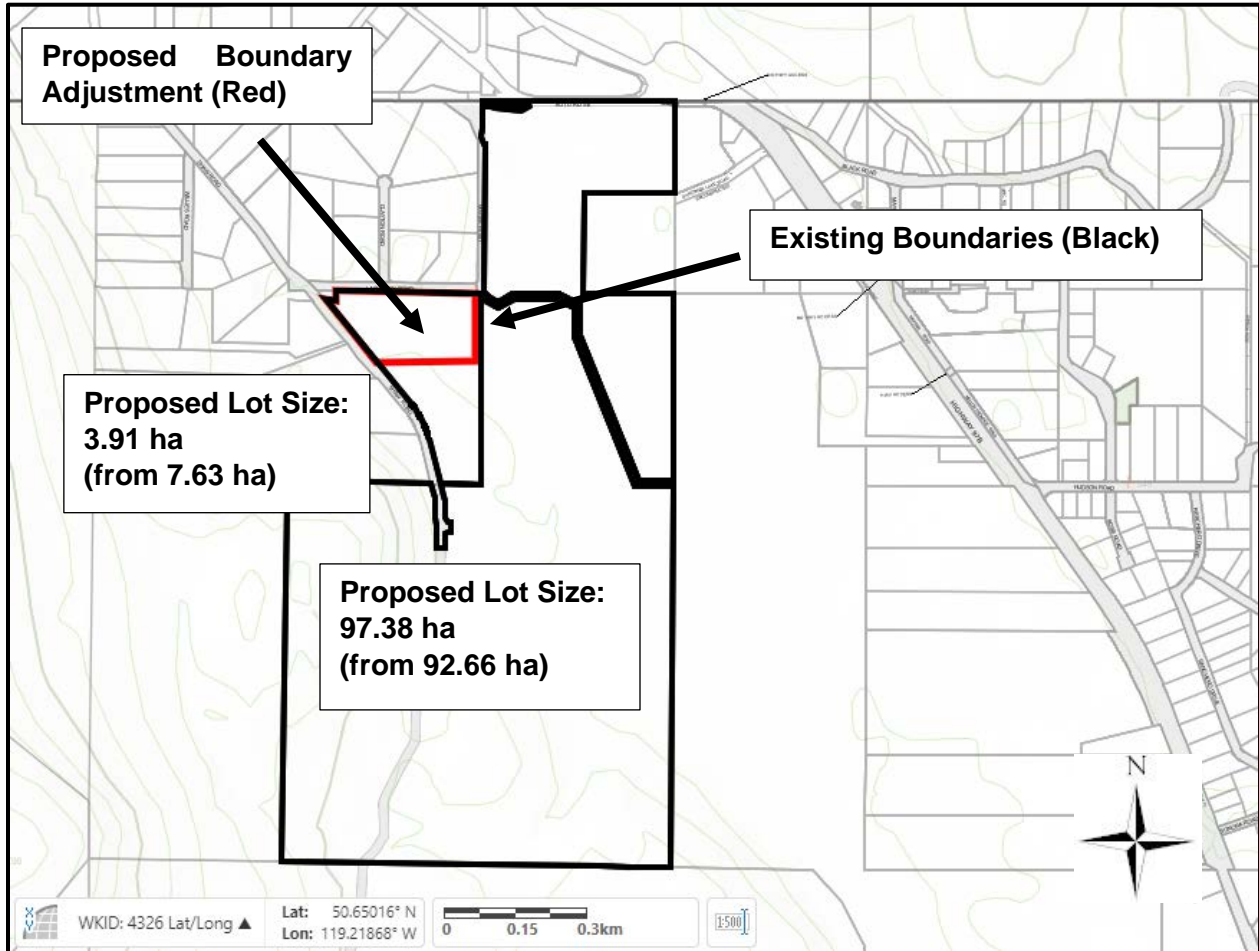
ORTHO IMAGERY – CSRD 2023

Approximate Subdivision/Boundary Adjustment (Red)



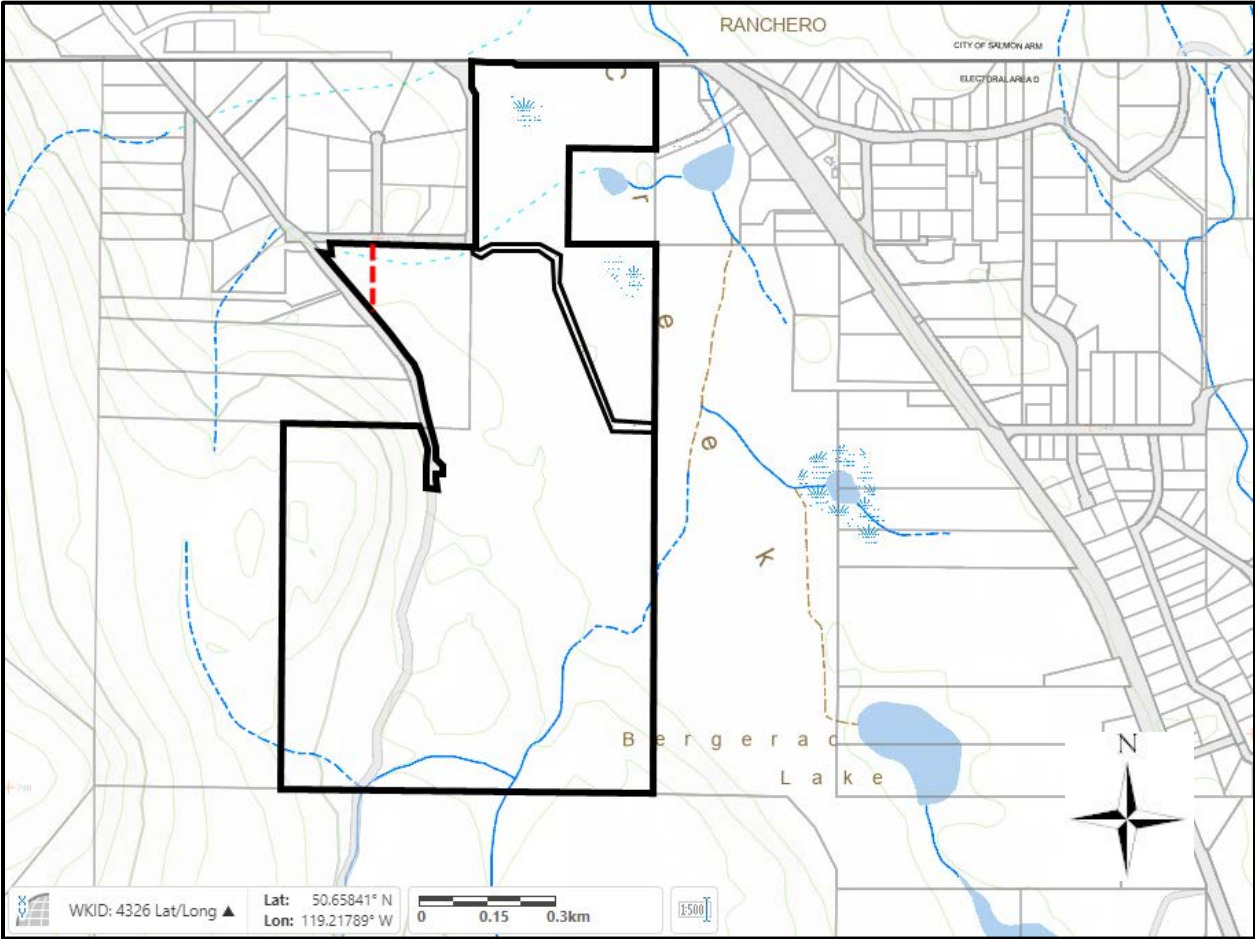
PROPOSED SUBDIVISION & LOT SIZES

APPROXIMATE



PROPOSED SUBDIVISION LC2596D

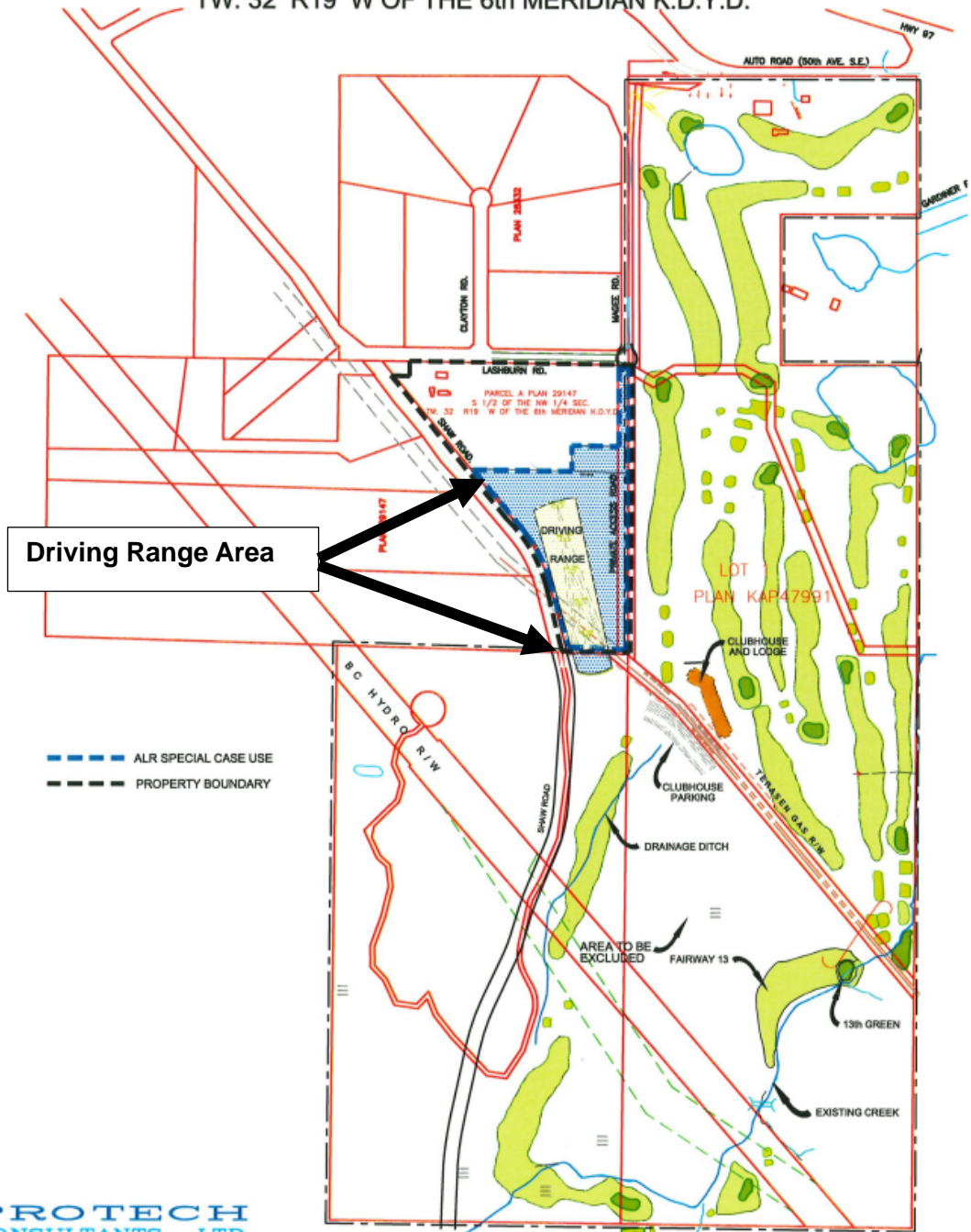
Denied by the ALC



ALC File No. LC2327 (2005) Approving the Driving Range

PLAN TO ACCOMPANY
SPECIAL CASE USE IN ALR

PARCEL A PLAN 29147
S 1/2 OF THE NW 1/4 SEC.
TW. 32 R19 W OF THE 6th MERIDIAN K.D.Y.D.



PROTECH
CONSULTANTS LTD.
200-1461 St. Paul Street Kelowna, B.C.
PHONE 860-1771
FAX 860-1004