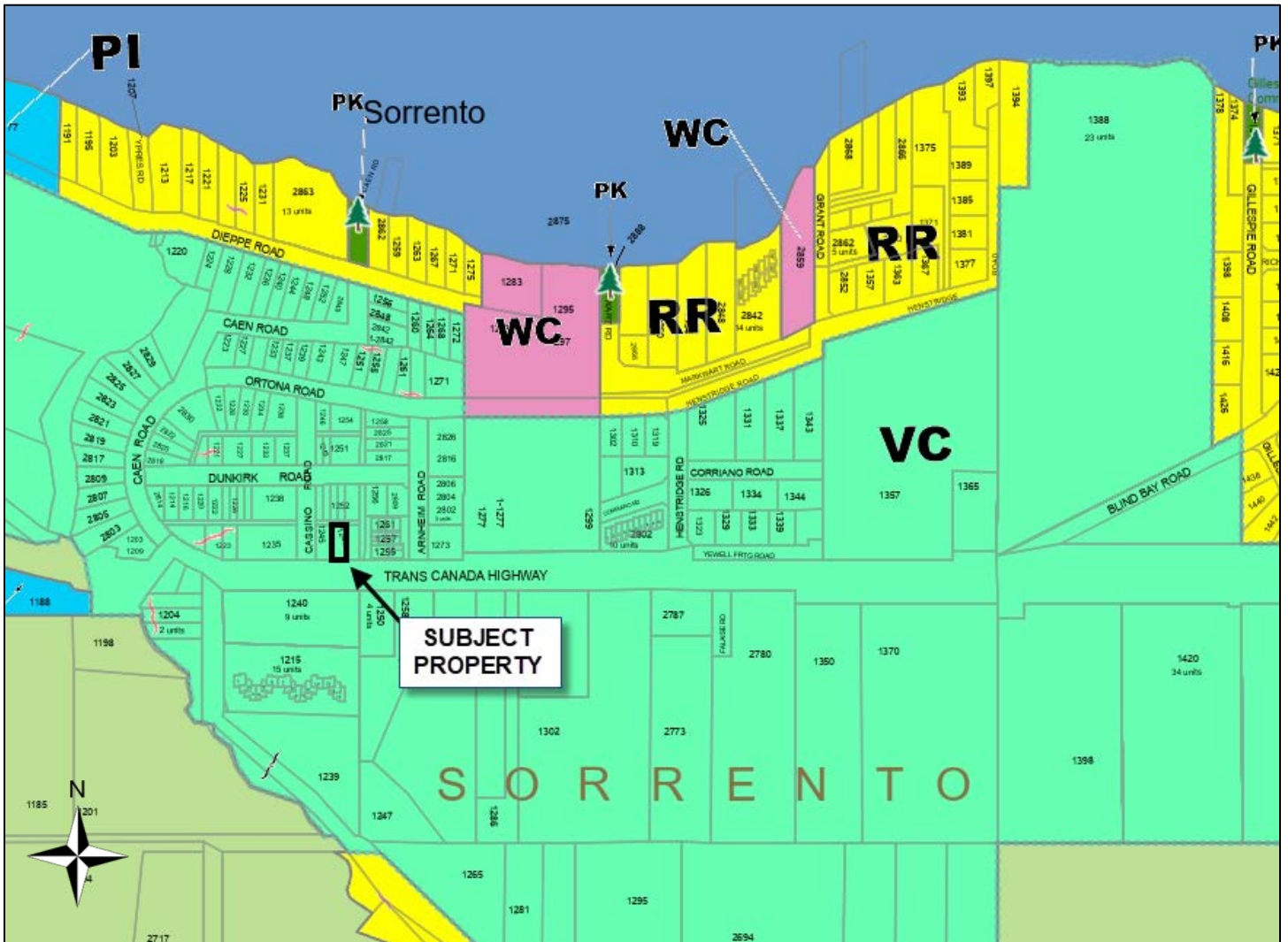
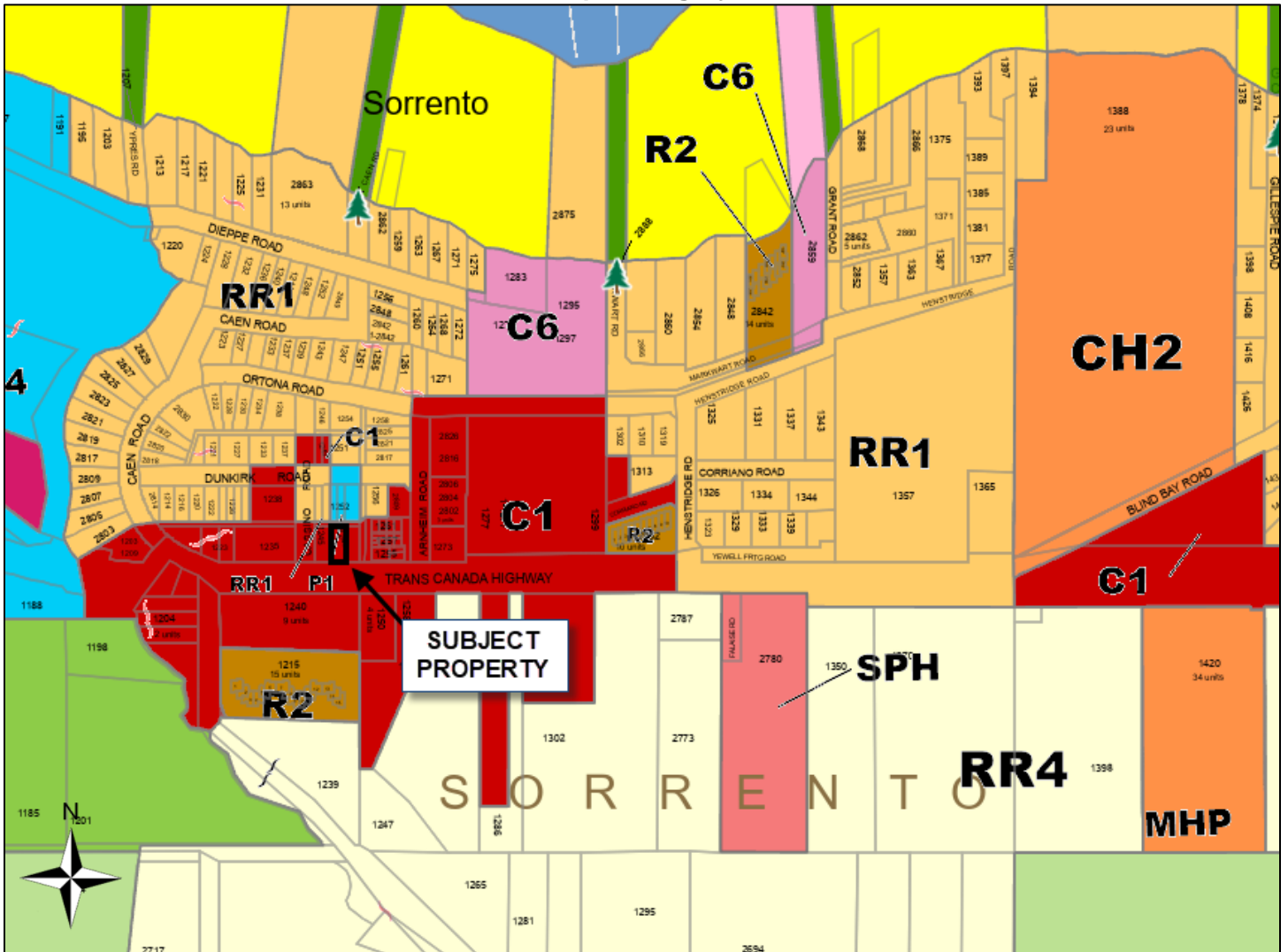


Electoral Area C Official Community Plan Bylaw No. 725



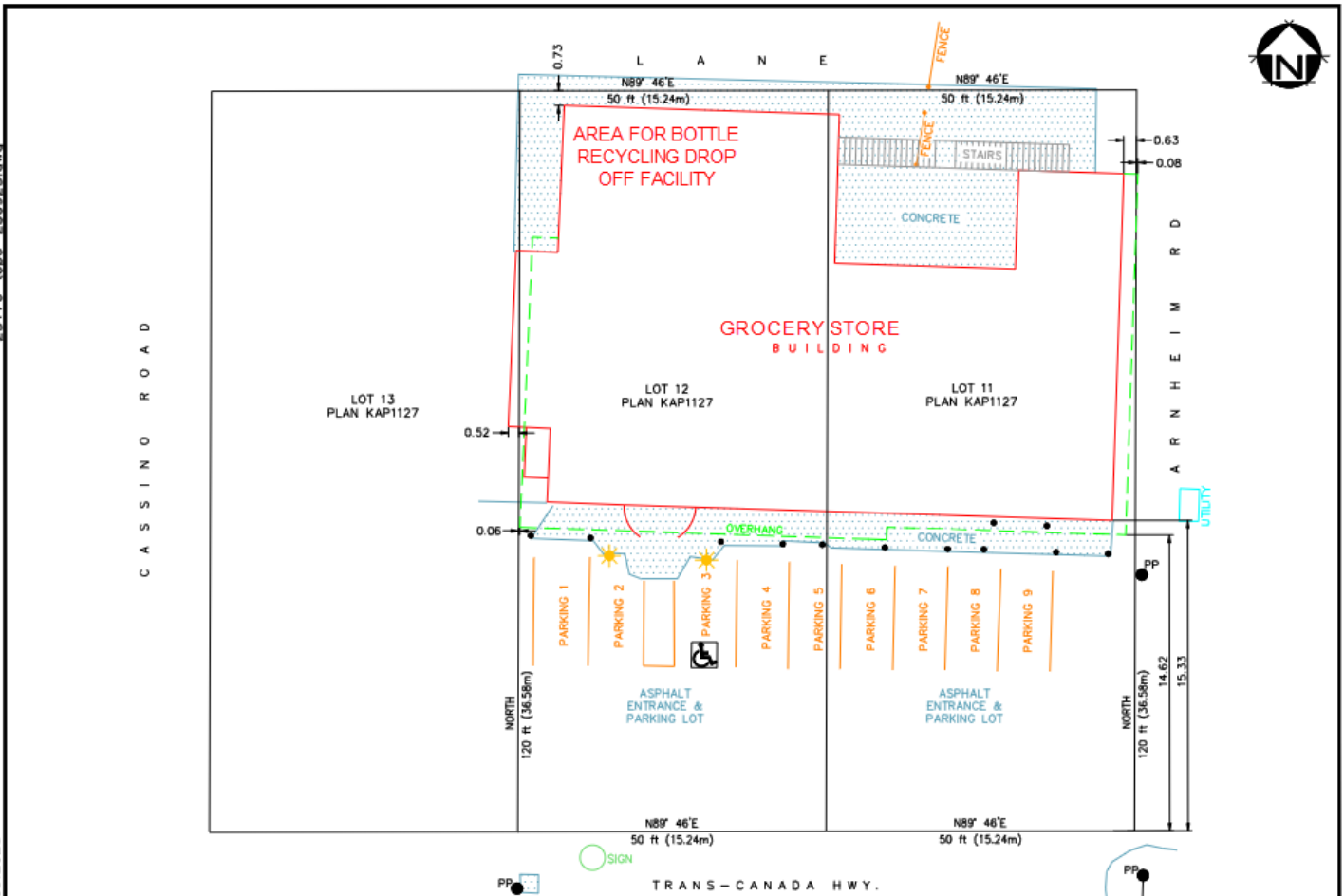
South Shuswap Zoning Bylaw No. 701



Site Plan

23176-topo-230925.dwg

PLOT DATE: 26.09.2023



PIN POINT
SURVEYING, LTD.

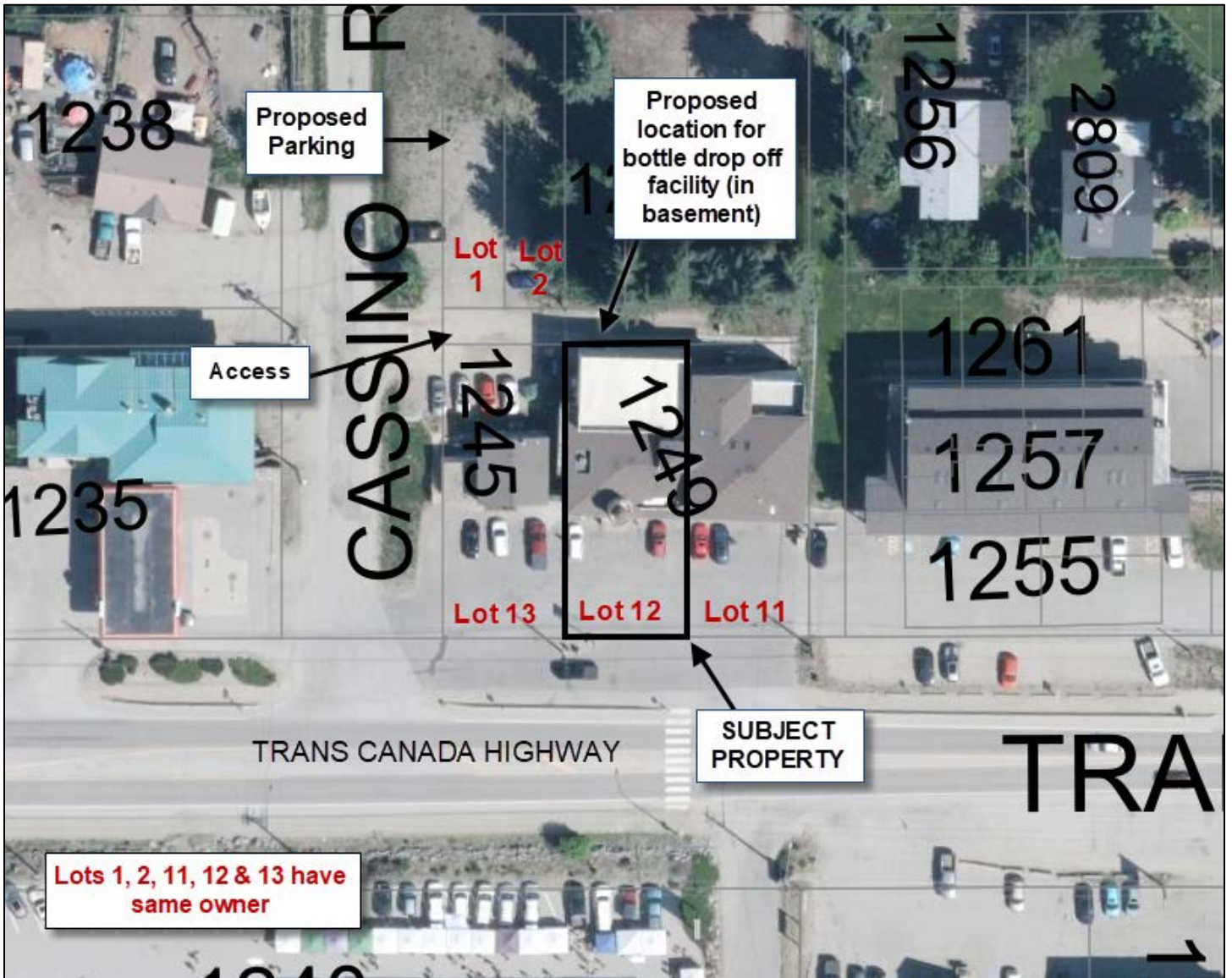
SALMON ARM, BC
(250) 832-8220
office@pinpointsurveying.com

CLIENT: SORRENTO VILLAGE GROCIER

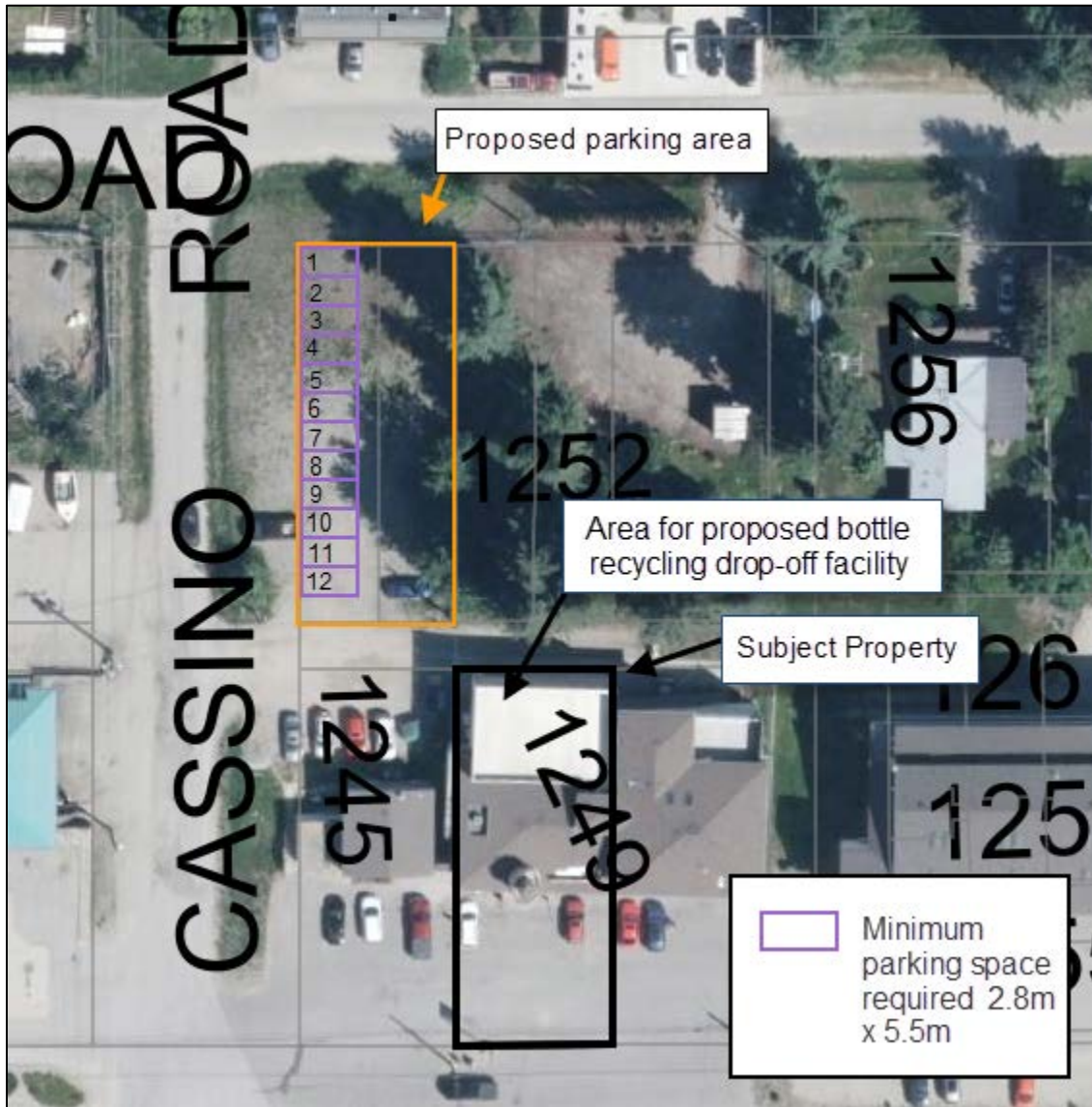
PROJECT: PLOT PLAN - 1249 TRANS-CANADA HWY, SORRENTO

FILE: 23176	DRAWN BY: CW
SCALE 1:250	
REVISION:	NO.: 1 OF 1

Orthophoto



Proposed Parking Spaces



Google Street View

View of front of building from Trans Canada Highway



View of access to Bottle Recycling Drop Off Facility from Casino Rd



Photos from Applicant (April 1, 2024)

Rear of Building where Bottle Recycling Drop Off Facility will be



Rear of Building where Bottle Recycling Drop Off Facility will be



Available Parking Spaces on Lots 1 and 2

