



TOLKO

Forest Management

Columbia Shuswap Regional District
September 21, 2017

Tolko

Tolko is based in Vernon, BC and has been privately owned by the Thorlakson family since its beginnings in 1956.

Products and Services

Tolko manufactures lumber, plywood, and OSB products and provides logistics and brokerage services.

Mission

To be an environmentally responsible and innovative company that prospers and grows by serving the needs of diverse customers in world markets, with products derived from the forests.

Vision

To be a top-decile forest products company providing strong customer value, while operating sustainably and achieving world class performance.

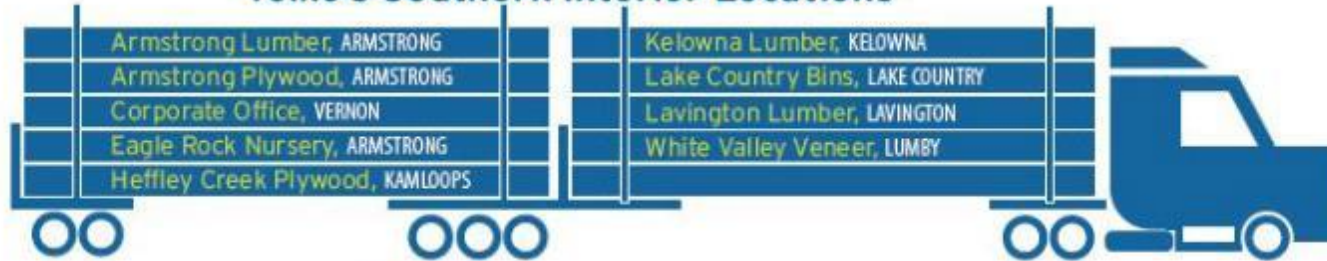
Values

Safety • Integrity • Open Communication •
Profit • Progressiveness • Respect

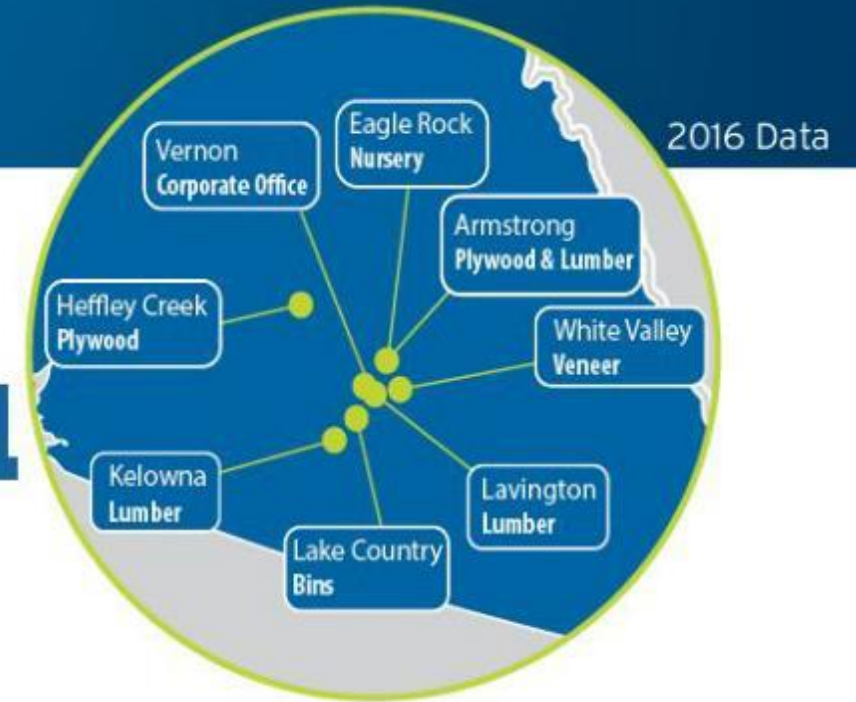


Community Impact

Tolko's Southern Interior Locations



Tolko directly employs **1,491** people in the Southern Interior which results in an estimated **1,938** spin-off jobs for a total of **3,429** direct and indirect jobs.



TRUE. TRUSTED. TOLKO.

TOLKO

Forest Planning Process

FSP
Certification

Landscape
Assessments

Preliminary
Plan

Permitting

Site Level
Development

Referrals &
Info
Sharing

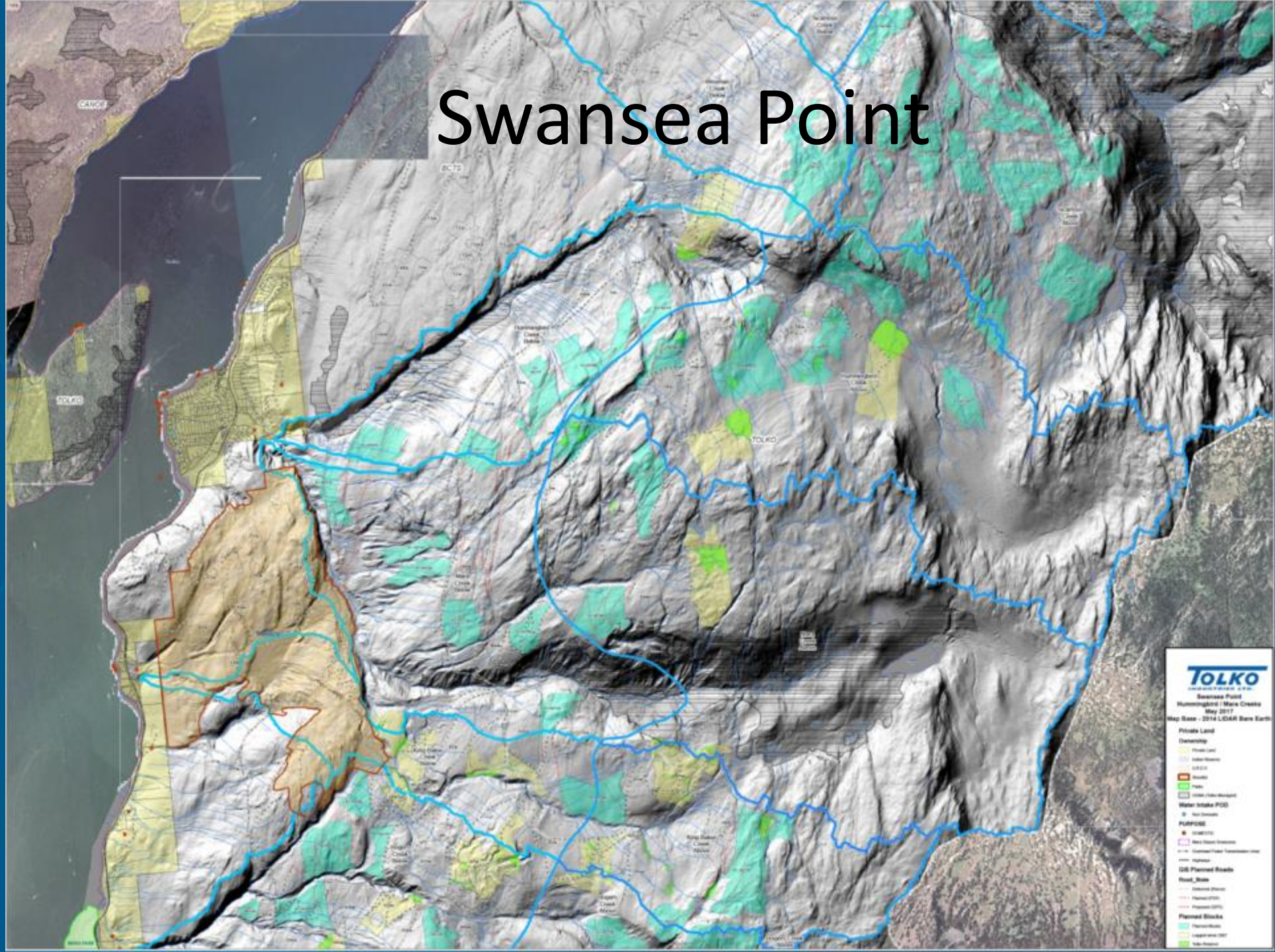
Roads &
Harvest
Operations

Silviculture
Operations

Monitoring
&
Continuous
Learning



Swansea Point



Swansea Point

Where we are:

- Draft framework agreement has been developed for landscape level watershed strategy

What we are doing:

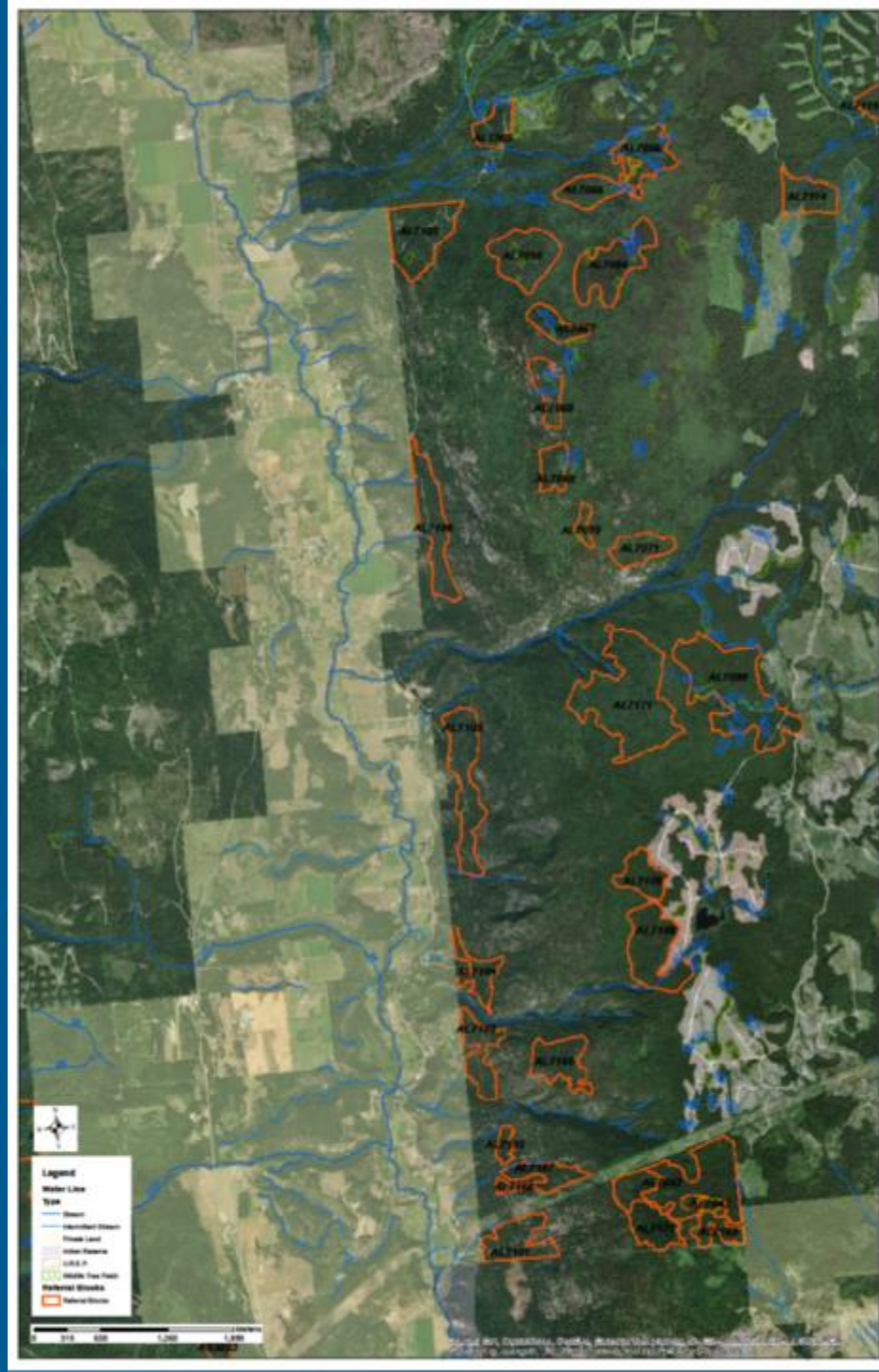
- Commencing professional assessments this fall to support framework agreement –unlikely it will be completed prior to snow fall

Next steps:

- Spring/summer 2018 – finish professional assessments
- Late fall 2018 – complete
- Late fall/winter 2018/2019 – communicate
- 2019 – layout blocks if supported by strategy



Silver Creek





Silver Creek

Where we are:

- Referral is complete – no further work has been completed to date.

What we are doing:

- Field reccis of proposed blocks scheduled for this fall to determine next steps

Next steps:

- Field trip with community members once field recci is completed – either late fall or spring 2018
- Based on recci – layout may commence spring 2018



Question and Comments