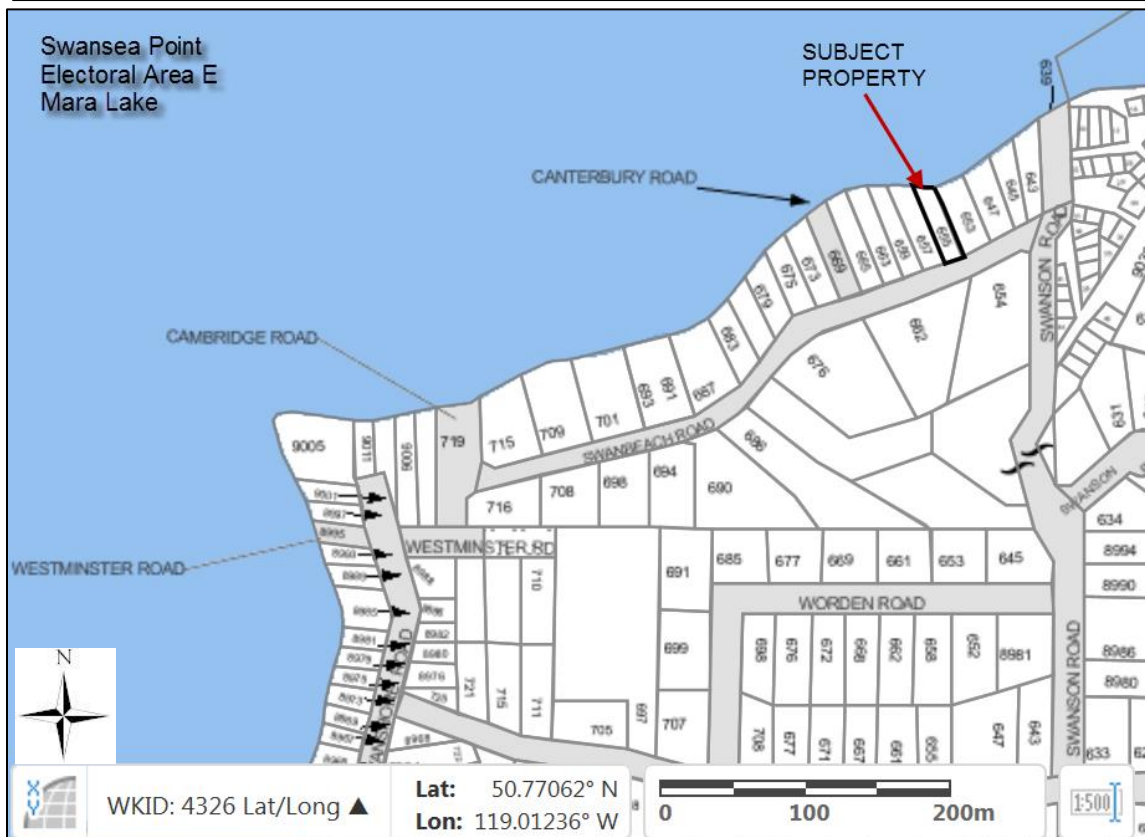
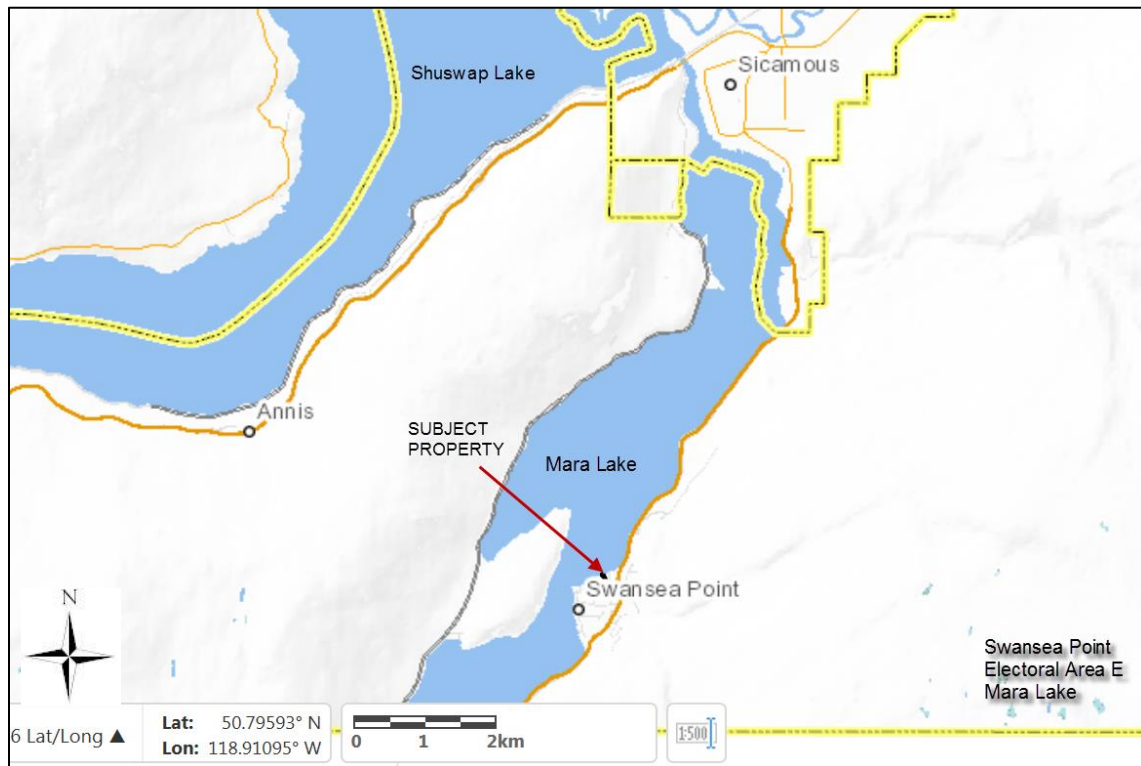
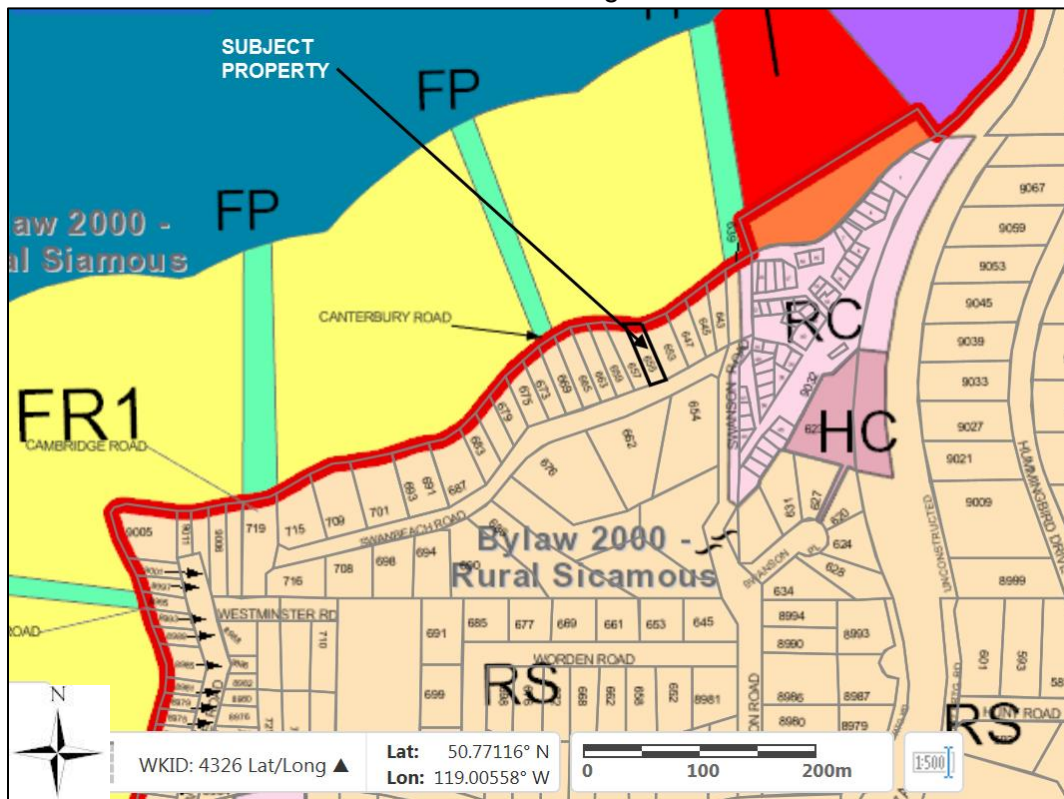


Location



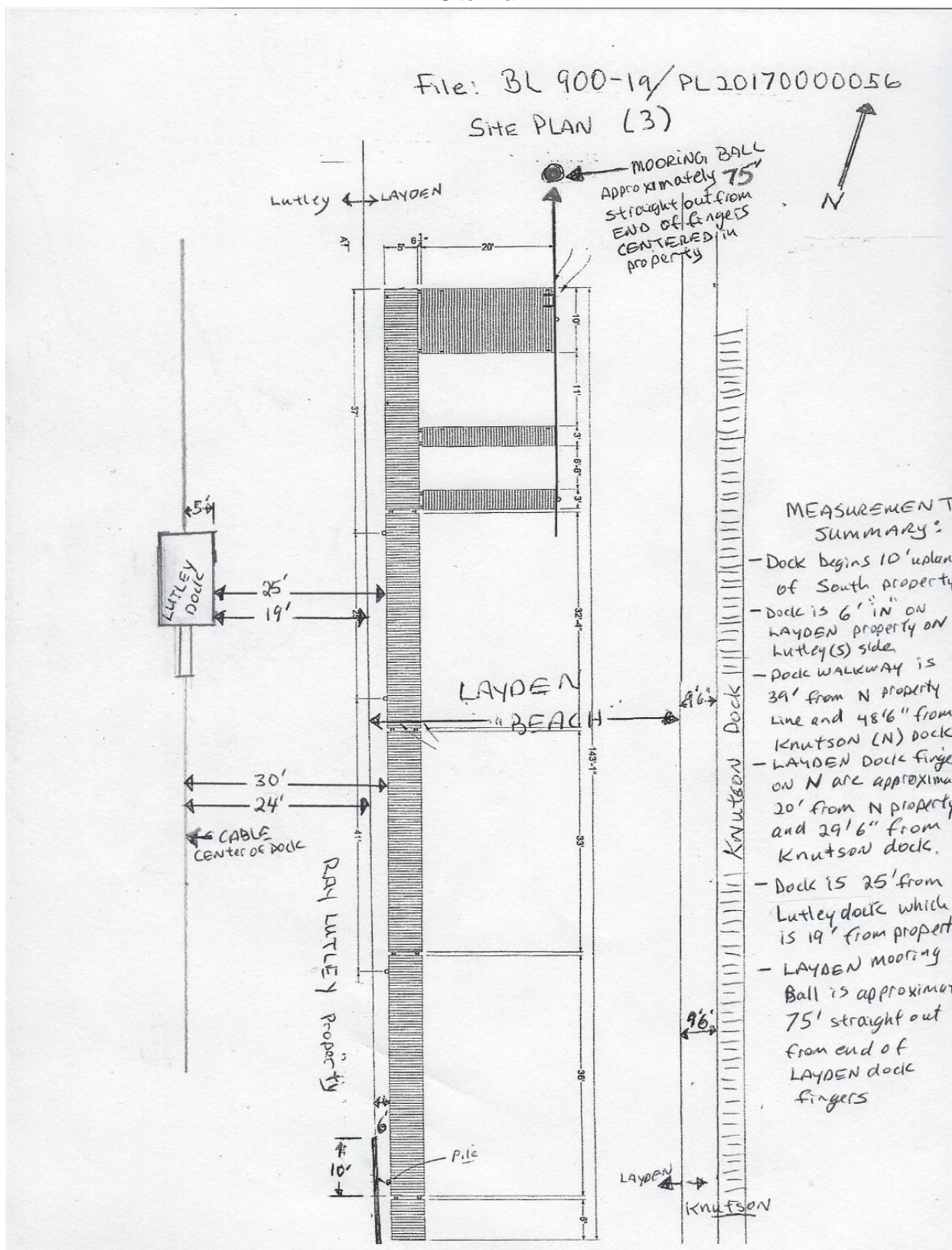
OCP/Zoning



Orthophotograph



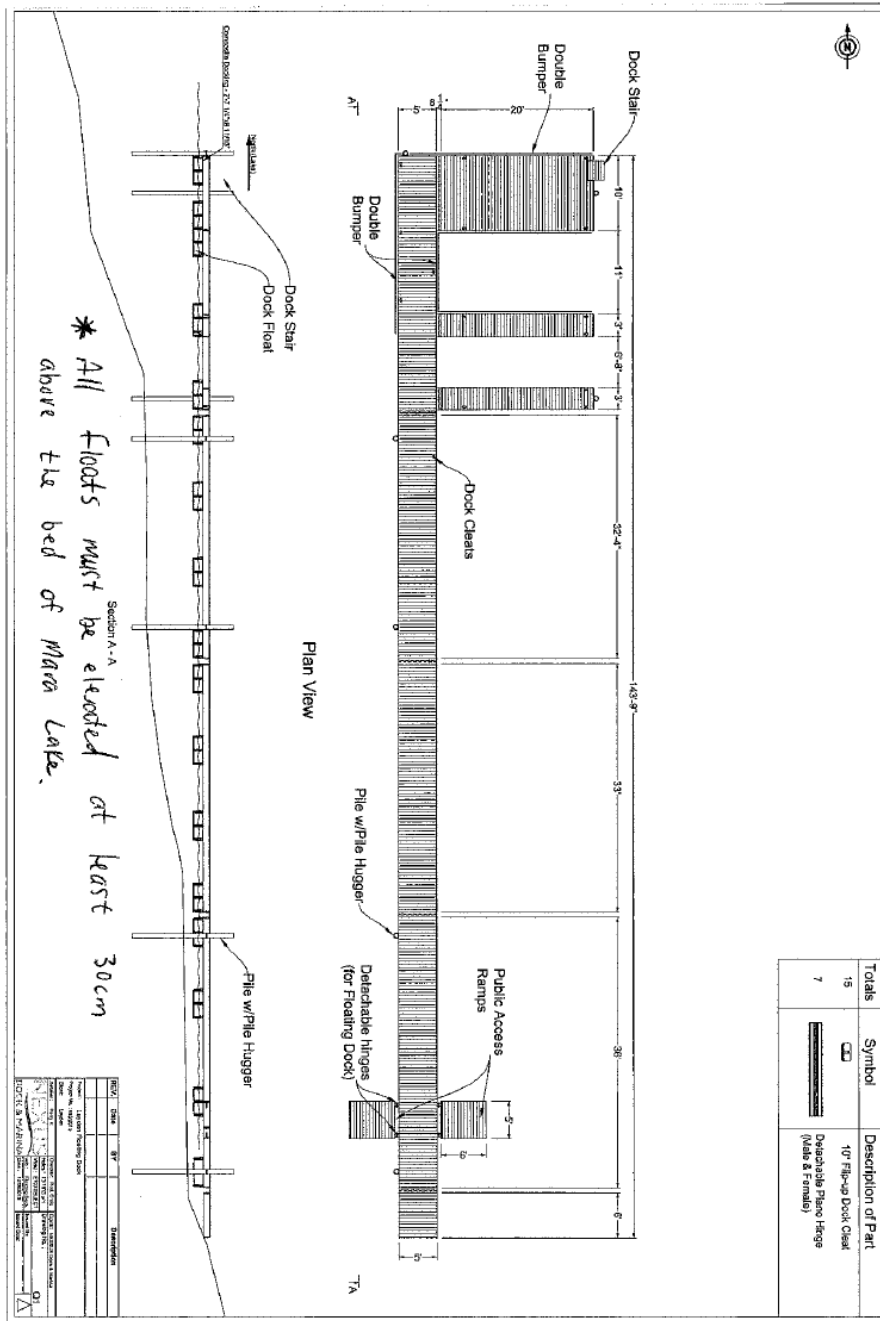
Site Plan



Specific Permission #3404832

File: 3404832

MANAGEMENT PLAN



Signed on behalf of

by a duly authorized signatory

Date

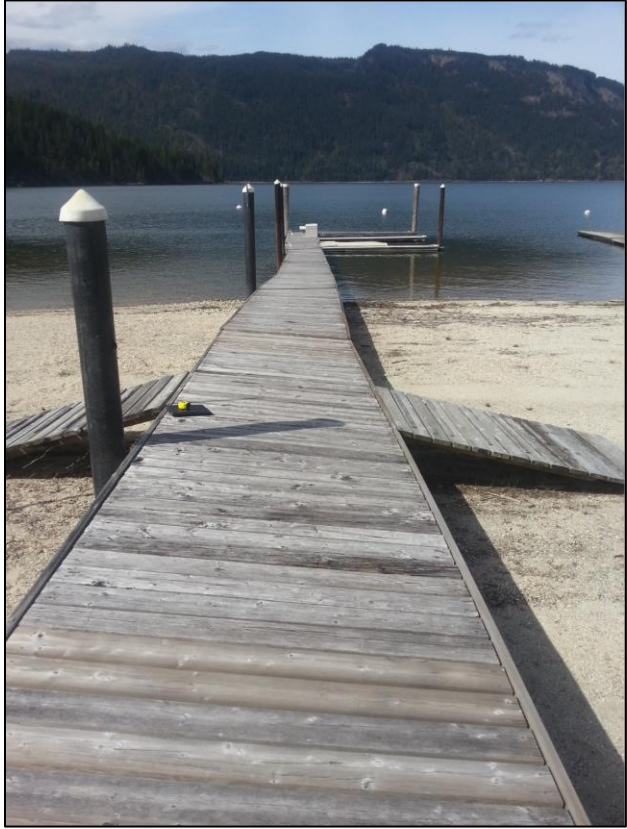
HER MAJESTY THE QUEEN IN RIGHT
OF THE PROVINCE OF BRITISH
COLUMBIA,
by its authorized representative

Kirsten Wein

December 7, 2015

Date

Original dock



New dock



New dock in relation to neighbouring dock to the west



Bylaw No. 900-19 – Maps and Photos

Proximity of Layden dock to neighbouring docks

*The floating dock adjacent to Layden property was not in place at the time photo was taken

