



SHUSWAP

watershed council

Annual Highlights

2016-17

Annual Highlights Report April 2016 – March 2017 *the inaugural year for SWC programs*

Water
Monitoring
Initiative

Water
Protection
Initiative

Safe
Recreation

Communications
& Advocacy



ANNUAL HIGHLIGHTS REPORT

April 2016 – March 2017

2016 was the inaugural year of program implementation for the Shuswap Watershed Council (SWC). Here are the highlights of what was achieved for water quality monitoring, water quality protection, and safe recreation.



PEOPLE WORKING TOGETHER

WATER QUALITY PROGRAM

Water Monitoring Initiative

- Re-convened and expanded the Shuswap Water Quality Monitoring Group – a legacy of the Shuswap Lake Integrated Planning Process – to ensure collaborative, complete water quality monitoring across the watershed
- Tracked the activities and commitments to monitoring by other organizations
 - At least 17 different groups are involved in water quality monitoring
 - More than 500 water samples were collected and analysed



A biologist deploys some instrumentation to collect water samples from Shuswap Lake.

Water quality monitoring results are published in a separate report from the SWC. You can find it on our website.

- Provided \$13,500 in support of an expanded monitoring program in the Salmon River. This was the first year of a three-year project with the BC Ministry of Environment to more intensely monitor the water quality of the Salmon River, which is vitally important to salmon and resident fish, agriculture and domestic uses, and has been the focus of many stewardship and restoration efforts.
- Developed a new monitoring project for nonylphenols, a substance of emerging concern that has not been monitored in the Shuswap. This project will be implemented in 2017.

WATER MONITORING



Nonylphenols are a group of compounds that are commonly found in industrial and consumer products such as plastics, rubber, detergents, cosmetics and shampoos, household cleaners, and latex paints. Treatment processes don't remove nonylphenols from waste water, which means that nonylphenols – along with many other substances – eventually end up in lakes and rivers. At certain concentrations, they are toxic to aquatic life.

WATER QUALITY DATA



- Developed a public user guide that explains how to access water quality data from the provincial "Environmental Management System" database – look for it on our website.

Water Monitoring Initiative

Annual Highlights Report April 2016 – March 2017 *the inaugural year for SWC programs*

Water Monitoring Initiative:

The SWC worked on three kinds of projects related to water quality monitoring:

1. Coordinated people working together
2. Provided support for additional water quality monitoring
3. Investigated and improved public access to water quality data



SHUSWAP
watershed council

ANNUAL HIGHLIGHTS REPORT

April 2016 – March 2017

2016 was the inaugural year of program implementation for the Shuswap Watershed Council (SWC). Here are the highlights of what was achieved for water quality monitoring, water quality protection, and safe recreation.

WATER QUALITY PROGRAM Water Monitoring Initiative

- Re-convened and expanded the Shuswap Water Quality Monitoring Group – a legacy of the Shuswap Lake Integrated Planning Process – to ensure collaborative, complete water quality monitoring across the watershed
- Tracked the activities and commitments to monitoring by other organizations
 - At least 17 different groups are involved in water quality monitoring
 - More than 500 water samples were collected and analysed

PEOPLE WORKING TOGETHER

A biologist deploys some instrumentation to collect water samples from Shuswap Lake.

Water quality monitoring results are published in a separate report from the SWC. You can find it on our website.

WATER MONITORING

Nonylphenols are a group of compounds that are commonly found in industrial and consumer products such as plastics, rubber, detergents, cosmetics and shampoos, household cleaners, and latex paints. Treatment processes don't remove nonylphenols from waste water, which means that nonylphenols – along with many other substances – eventually end up in lakes and rivers. At certain concentrations, they are toxic to aquatic life.

WATER QUALITY DATA

- Developed a public user guide that explains how to access water quality data from the provincial "Environmental Management System" database – look for it on our website.

Annual Highlights Report April 2016 – March 2017 *the inaugural year for SWC programs*

Water Monitoring Initiative:

1. Coordinated people working together
 - Facilitated the Shuswap Water Quality Monitoring Group
There are up to 17 groups/organizations involved in water quality monitoring in the watershed. The monitoring group works in a spirit of collaboration – participation is voluntary.
 - Served as a central ‘tracker’ for all water quality monitoring activities in the watershed. No other organization serves this function.
Up to 500 water samples are collected annually



SHUSWAP
watershed council

ANNUAL HIGHLIGHTS REPORT

April 2016 – March 2017

2016 was the inaugural year of program implementation for the Shuswap Watershed Council (SWC). Here are the highlights of what was achieved for water quality monitoring, water quality protection, and safe recreation.

WATER QUALITY PROGRAM Water Monitoring Initiative

PEOPLE WORKING TOGETHER

- Re-convened and expanded the Shuswap Water Quality Monitoring Group – a legacy of the Shuswap Lake Integrated Planning Process – to ensure collaborative, complete water quality monitoring across the watershed
- Tracked the activities and commitments to monitoring by other organizations
 - At least 17 different groups are involved in water quality monitoring
 - More than 500 water samples were collected and analysed

WATER MONITORING

A biologist deploys some instrumentation to collect water samples from Shuswap Lake.

Water quality monitoring results are published in a separate report from the SWC. You can find it on our website.

Nonylphenols are a group of compounds that are commonly found in industrial and consumer products such as plastics, rubber, detergents, cosmetics and shampoos, household cleaners, and latex paints. Treatment processes don't remove nonylphenols from waste water, which means that nonylphenols – along with many other substances – eventually end up in lakes and rivers. At certain concentrations, they are toxic to aquatic life.

WATER QUALITY DATA

- Developed a public user guide that explains how to access water quality data from the provincial "Environmental Management System" database – look for it on our website.

Annual Highlights Report April 2016 – March 2017 *the inaugural year for SWC programs*

Water Monitoring Initiative:

2. Provided support for additional water quality monitoring

- Provided \$13,500 for extra monitoring on the Salmon River, an important tributary to Shuswap Lake

- Developed a new monitoring project for nonylphenols that begins this year
Nonylphenols are a substance of emerging concern, and have not been monitored in the Shuswap. They are found in many commercial and industrial products. Treatment processes don't remove nonylphenols from waste water, which means they eventually end up in lakes and rivers. They can be toxic to aquatic life.



SHUSWAP
watershed council

ANNUAL HIGHLIGHTS REPORT

April 2016 – March 2017

2016 was the inaugural year of program implementation for the Shuswap Watershed Council (SWC). Here are the highlights of what was achieved for water quality monitoring, water quality protection, and safe recreation.

WATER QUALITY PROGRAM

Water Monitoring Initiative

- Re-convened and expanded the Shuswap Water Quality Monitoring Group – a legacy of the Shuswap Lake Integrated Planning Process – to ensure collaborative, complete water quality monitoring across the watershed
- Tracked the activities and commitments to monitoring by other organizations
 - At least 17 different groups are involved in water quality monitoring
 - More than 500 water samples were collected and analysed

PEOPLE WORKING TOGETHER

WATER MONITORING

Nonylphenols are a group of compounds that are commonly found in industrial and consumer products such as plastics, rubber, detergents, cosmetics and shampoos, household cleaners, and latex paints. Treatment processes don't remove nonylphenols from waste water, which means that nonylphenols – along with many other substances – eventually end up in lakes and rivers. At certain concentrations, they are toxic to aquatic life.

Water quality monitoring results are published in a separate report from the SWC. You can find it on our website.

WATER QUALITY DATA

- Developed a public user guide that explains how to access water quality data from the provincial "Environmental Management System" database – look for it on our website.

A biologist deploys some instrumentation to collect water samples from Shuswap Lake.

Annual Highlights Report April 2016 – March 2017 *the inaugural year for SWC programs*

Water Monitoring Initiative:

3. Investigated and improved public access to water quality data

- Created a user-guide to access the Environmental Monitoring System (EMS), the Province's online data warehouse that contains water quality data and more
As of early May, the user-guide is in production and will be posted online soon!



SHUSWAP
watershed council

ANNUAL HIGHLIGHTS REPORT

April 2016 – March 2017

2016 was the inaugural year of program implementation for the Shuswap Watershed Council (SWC). Here are the highlights of what was achieved for water quality monitoring, water quality protection, and safe recreation.

WATER QUALITY PROGRAM

Water Monitoring Initiative

- Re-convened and expanded the Shuswap Water Quality Monitoring Group – a legacy of the Shuswap Lake Integrated Planning Process – to ensure collaborative, complete water quality monitoring across the watershed
- Tracked the activities and commitments to monitoring by other organizations
 - At least 17 different groups are involved in water quality monitoring
 - More than 500 water samples were collected and analysed

PEOPLE WORKING TOGETHER

A biologist deploys some instrumentation to collect water samples from Shuswap Lake.

Water quality monitoring results are published in a separate report from the SWC. You can find it on our website.

Nonylphenols are a group of compounds that are commonly found in industrial and consumer products such as plastics, rubber, detergents, cosmetics and shampoos, household cleaners, and latex paints. Treatment processes don't remove nonylphenols from waste water, which means that nonylphenols – along with many other substances – eventually end up in lakes and rivers. At certain concentrations, they are toxic to aquatic life.

WATER MONITORING

• Provided \$13,500 in support of an expanded monitoring program in the Salmon River. This was the first year of a three-year project with the BC Ministry of Environment to more intensely monitor the water quality of the Salmon River, which is vitally important to salmon and resident fish, agriculture and domestic uses, and has been the focus of many stewardship and restoration efforts.

• Developed a new monitoring project for nonylphenols, a substance of emerging concern that has not been monitored in the Shuswap. This project will be implemented in 2017.

WATER QUALITY DATA

• Developed a public user guide that explains how to access water quality data from the provincial "Environmental Management System" database – look for it on our website.

Water Protection Initiative

Annual Highlights Report April 2016 – March 2017 *the inaugural year for SWC programs*

Water Protection Initiative:

The SWC worked on four kinds of projects related to water quality protection:

1. Coordinated people working together
2. Conducted water quality research
3. Supported water quality restoration
4. Education



SHUSWAP
watershed council

ANNUAL HIGHLIGHTS REPORT

April 2016 – March 2017

2016 was the inaugural year of program implementation for the Shuswap Watershed Council (SWC). Here are the highlights of what was achieved for water quality monitoring, water quality protection, and safe recreation.

WATER QUALITY PROGRAM

Water Monitoring Initiative

- Re-convened and expanded the Shuswap Water Quality Monitoring Group – a legacy of the Shuswap Lake Integrated Planning Process – to ensure collaborative, complete water quality monitoring across the watershed
- Tracked the activities and commitments to monitoring by other organizations
 - At least 17 different groups are involved in water quality monitoring
 - More than 500 water samples were collected and analysed

PEOPLE WORKING TOGETHER

WATER MONITORING

Nonylphenols are a group of compounds that are commonly found in industrial and consumer products such as plastics, rubber, detergents, cosmetics and shampoos, household cleaners, and latex paints. Treatment processes don't remove nonylphenols from waste water, which means that nonylphenols – along with many other substances – eventually end up in lakes and rivers. At certain concentrations, they are toxic to aquatic life.

Water quality monitoring results are published in a separate report from the SWC. You can find it on our website.

WATER QUALITY DATA

- Developed a public user guide that explains how to access water quality data from the provincial "Environmental Management System" database – look for it on our website.

Annual Highlights Report April 2016 – March 2017 *the inaugural year for SWC programs*

Water Protection Initiative:

1. Coordinated people working together
 - Established a Water Protection Advisory Committee, with diverse representation, to support the work of the SWC
- The committee makes recommendations related to water quality restoration, education, and partnership opportunities*



SHUSWAP
watershed council

ANNUAL HIGHLIGHTS REPORT

April 2016 – March 2017

2016 was the inaugural year of program implementation for the Shuswap Watershed Council (SWC). Here are the highlights of what was achieved for water quality monitoring, water quality protection, and safe recreation.

WATER QUALITY PROGRAM

Water Monitoring Initiative

- Re-convened and expanded the Shuswap Water Quality Monitoring Group – a legacy of the Shuswap Lake Integrated Planning Process – to ensure collaborative, complete water quality monitoring across the watershed
- Tracked the activities and commitments to monitoring by other organizations
 - At least 17 different groups are involved in water quality monitoring
 - More than 500 water samples were collected and analysed

PEOPLE WORKING TOGETHER

A biologist deploys some instrumentation to collect water samples from Shuswap Lake.

Water quality monitoring results are published in a separate report from the SWC. You can find it on our website.

Nonylphenols are a group of compounds that are commonly found in industrial and consumer products such as plastics, rubber, detergents, cosmetics and shampoos, household cleaners, and latex paints. Treatment processes don't remove nonylphenols from waste water, which means that nonylphenols – along with many other substances – eventually end up in lakes and rivers. At certain concentrations, they are toxic to aquatic life.

WATER MONITORING

WATER QUALITY DATA

- Provided \$13,500 in support of an expanded monitoring program in the Salmon River. This was the first year of a three-year project with the BC Ministry of Environment to more intensely monitor the water quality of the Salmon River, which is vitally important to salmon and resident fish, agriculture and domestic uses, and has been the focus of many stewardship and restoration efforts.
- Developed a new monitoring project for nonylphenols, a substance of emerging concern that has not been monitored in the Shuswap. This project will be implemented in 2017.
- Developed a public user guide that explains how to access water quality data from the provincial "Environmental Management System" database – look for it on our website.

Annual Highlights Report April 2016 – March 2017 *the inaugural year for SWC programs*

Water Protection Initiative:

2. Conducted water quality research

- Entered into a research agreement with UBC-Okanagan to determine the sources of nutrients in the Shuswap and Salmon Rivers

The three-year research project will wrap up in 2019. It will answer the following questions:

Are there excess nutrients in the rivers not from the natural environment?

If so, where are they coming from and how are they getting into the rivers?

2016 was the first year of study. 20 monitoring sites were established, and over 250 samples were collected and analyzed.



SHUSWAP
watershed council

ANNUAL HIGHLIGHTS REPORT

April 2016 – March 2017

2016 was the inaugural year of program implementation for the Shuswap Watershed Council (SWC). Here are the highlights of what was achieved for water quality monitoring, water quality protection, and safe recreation.

WATER QUALITY PROGRAM

Water Monitoring Initiative

- Re-convened and expanded the Shuswap Water Quality Monitoring Group – a legacy of the Shuswap Lake Integrated Planning Process – to ensure collaborative, complete water quality monitoring across the watershed
- Tracked the activities and commitments to monitoring by other organizations
 - At least 17 different groups are involved in water quality monitoring
 - More than 500 water samples were collected and analysed

PEOPLE WORKING TOGETHER

WATER MONITORING

Nonylphenols are a group of compounds that are commonly found in industrial and consumer products such as plastics, rubber, detergents, cosmetics and shampoos, household cleaners, and latex paints. Treatment processes don't remove nonylphenols from waste water, which means that nonylphenols – along with many other substances – eventually end up in lakes and rivers. At certain concentrations, they are toxic to aquatic life.

WATER QUALITY DATA

- Developed a public user guide that explains how to access water quality data from the provincial "Environmental Management System" database – look for it on our website.

A biologist deploys some instrumentation to collect water samples from Shuswap Lake.

Annual Highlights Report

April 2016 – March 2017

the inaugural year for SWC programs

Water Protection Initiative:

3. Supported water quality restoration

- Provided \$10,000 to Splat sin Development Corporation on Alderson Creek, a tributary to Shuswap River.

A 2-km reach was cleaned and re-configured, and restored with riparian vegetation and livestock exclusion fencing. Several groups worked together to make this happen, including Splat sin First Nation, BC Cattlemens Association, and private land-owners.



Annual Highlights Report April 2016 – March 2017 *the inaugural year for SWC programs*

Water Protection Initiative:

4. Education

- Provided financial support to the North Okanagan Dairy Extension Advisory Committee for a guest presenter at their annual industry seminar



SHUSWAP
watershed council

ANNUAL HIGHLIGHTS REPORT

April 2016 – March 2017

2016 was the inaugural year of program implementation for the Shuswap Watershed Council (SWC). Here are the highlights of what was achieved for water quality monitoring, water quality protection, and safe recreation.

WATER QUALITY PROGRAM

Water Monitoring Initiative

- Re-convened and expanded the Shuswap Water Quality Monitoring Group – a legacy of the Shuswap Lake Integrated Planning Process – to ensure collaborative, complete water quality monitoring across the watershed
- Tracked the activities and commitments to monitoring by other organizations
 - At least 17 different groups are involved in water quality monitoring
 - More than 500 water samples were collected and analysed

PEOPLE WORKING TOGETHER

A biologist deploys some instrumentation to collect water samples from Shuswap Lake.

Water quality monitoring results are published in a separate report from the SWC. You can find it on our website.

Nonylphenols are a group of compounds that are commonly found in industrial and consumer products such as plastics, rubber, detergents, cosmetics and shampoos, household cleaners, and latex paints. Treatment processes don't remove nonylphenols from waste water, which means that nonylphenols – along with many other substances – eventually end up in lakes and rivers. At certain concentrations, they are toxic to aquatic life.

WATER MONITORING

• Provided \$13,500 in support of an expanded monitoring program in the Salmon River. This was the first year of a three-year project with the BC Ministry of Environment to more intensely monitor the water quality of the Salmon River, which is vitally important to salmon and resident fish, agriculture and domestic uses, and has been the focus of many stewardship and restoration efforts.

• Developed a new monitoring project for nonylphenols, a substance of emerging concern that has not been monitored in the Shuswap. This project will be implemented in 2017.

WATER QUALITY DATA

• Developed a public user guide that explains how to access water quality data from the provincial "Environmental Management System" database – look for it on our website.

Annual Highlights Report April 2016 – March 2017 *the inaugural year for SWC programs*

Safe Recreation:

The SWC worked on two kinds of projects related to safe recreation on and near the water:

1. Education
2. Equipment



SHUSWAP
watershed council

ANNUAL HIGHLIGHTS REPORT

April 2016 – March 2017

2016 was the inaugural year of program implementation for the Shuswap Watershed Council (SWC). Here are the highlights of what was achieved for water quality monitoring, water quality protection, and safe recreation.

WATER QUALITY PROGRAM
Water Monitoring Initiative

- Re-convened and expanded the Shuswap Water Quality Monitoring Group – a legacy of the Shuswap Lake Integrated Planning Process – to ensure collaborative, complete water quality monitoring across the watershed
- Tracked the activities and commitments to monitoring by other organizations
 - At least 17 different groups are involved in water quality monitoring
 - More than 500 water samples were collected and analysed

PEOPLE WORKING TOGETHER

WATER MONITORING

Nonylphenols are a group of compounds that are commonly found in industrial and consumer products such as plastics, rubber, detergents, cosmetics and shampoos, household cleaners, and latex paints. Treatment processes don't remove nonylphenols from waste water, which means that nonylphenols – along with many other substances – eventually end up in lakes and rivers. At certain concentrations, they are toxic to aquatic life.

Water quality monitoring results are published in a separate report from the SWC. You can find it on our website.

WATER QUALITY DATA

- Developed a public user guide that explains how to access water quality data from the provincial "Environmental Management System" database – look for it on our website.

A biologist deploys some instrumentation to collect water samples from Shuswap Lake.

Annual Highlights Report

April 2016 – March 2017

the inaugural year for SWC programs

Safe Recreation:

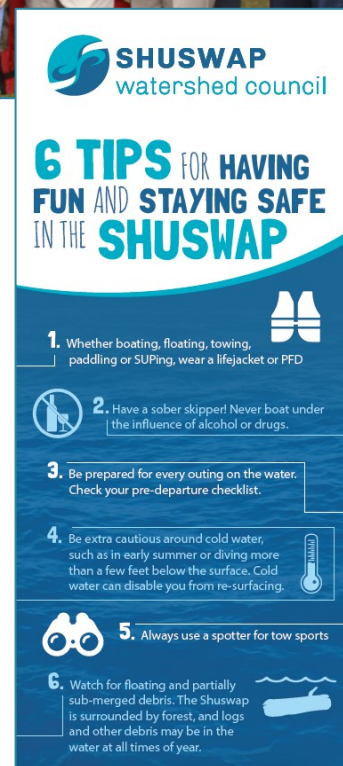
1. Education

- Established partnership with Royal Canadian Marine Search and Rescue (RCM-SAR) to create safety campaigns
- Delivered campaigns May – September
Campaigns focused on lifejacket use, cold water safety, sober boating, and boating preparedness

- Created and distributed rack card

2. Equipment

- Provided \$1200 to RCM-SAR for a PFD Loaner Station at the Salmon Arm Wharf
- Purchased and distributed water safety whistles to recreationists



Annual Highlights Report April 2016 – March 2017 *the inaugural year for SWC programs*

Communications and Advocacy:

Educational, informative and transparent communications are an important part of the SWC's work. Here's a summary of what was done in 2016-2017:

- Informative communiqués about the SWC and its work
- Highlights reports and detailed summaries from SWC meetings
- Up-to-date online presence: website, Facebook and Twitter
- Correspondence with the Province regarding aquatic invasive mussels
- Attendance and presentations at events



SHUSWAP
watershed council

ANNUAL HIGHLIGHTS REPORT

April 2016 – March 2017

2016 was the inaugural year of program implementation for the Shuswap Watershed Council (SWC). Here are the highlights of what was achieved for water quality monitoring, water quality protection, and safe recreation.

WATER QUALITY PROGRAM
Water Monitoring Initiative

- Re-convened and expanded the Shuswap Water Quality Monitoring Group – a legacy of the Shuswap Lake Integrated Planning Process – to ensure collaborative, complete water quality monitoring across the watershed
- Tracked the activities and commitments to monitoring by other organizations
 - At least 17 different groups are involved in water quality monitoring
 - More than 500 water samples were collected and analysed

PEOPLE WORKING TOGETHER

WATER MONITORING

A biologist deploys some instrumentation to collect water samples from Shuswap Lake.

Water quality monitoring results are published in a separate report from the SWC. You can find it on our website.

Nonylphenols are a group of compounds that are commonly found in industrial and consumer products such as plastics, rubber, detergents, cosmetics and shampoos, household cleaners, and latex paints. Treatment processes don't remove nonylphenols from waste water, which means that nonylphenols – along with many other substances – eventually end up in lakes and rivers. At certain concentrations, they are toxic to aquatic life.

WATER QUALITY DATA

- Developed a public user guide that explains how to access water quality data from the provincial "Environmental Management System" database – look for it on our website.

Annual Highlights Report April 2016 – March 2017 *the inaugural year for SWC programs*

Administration and Governance:

- Finalized the Terms of Reference for the Shuswap Watershed Council
The TOR sets out the roles, responsibilities, expectations, and decision-making for council members
- Established criteria for including community representatives in council membership, and welcomed three representatives in May 2016
- Met four times per year, once per quarter



SHUSWAP
watershed council

ANNUAL HIGHLIGHTS REPORT

April 2016 – March 2017

2016 was the inaugural year of program implementation for the Shuswap Watershed Council (SWC). Here are the highlights of what was achieved for water quality monitoring, water quality protection, and safe recreation.

WATER QUALITY PROGRAM

Water Monitoring Initiative

- Re-convened and expanded the Shuswap Water Quality Monitoring Group – a legacy of the Shuswap Lake Integrated Planning Process – to ensure collaborative, complete water quality monitoring across the watershed
- Tracked the activities and commitments to monitoring by other organizations
 - At least 17 different groups are involved in water quality monitoring
 - More than 500 water samples were collected and analysed

PEOPLE WORKING TOGETHER

WATER MONITORING

A biologist deploys some instrumentation to collect water samples from Shuswap Lake.

Water quality monitoring results are published in a separate report from the SWC. You can find it on our website.

Nonylphenols are a group of compounds that are commonly found in industrial and consumer products such as plastics, rubber, detergents, cosmetics and shampoos, household cleaners, and latex paints. Treatment processes don't remove nonylphenols from waste water, which means that nonylphenols – along with many other substances – eventually end up in lakes and rivers. At certain concentrations, they are toxic to aquatic life.

WATER QUALITY DATA

- Developed a public user guide that explains how to access water quality data from the provincial "Environmental Management System" database – look for it on our website.

Annual Highlights Report

April 2016 – March 2017

the inaugural year for SWC programs

2016-17 budget and expenses

Contributor	Amount (\$)
Columbia Shuswap Regional District (Areas C, D, E, F and District of Sicamous)	108,900
Thompson-Nicola Regional District	53,600
City of Salmon Arm	40,000
2016 surplus (carried forward from March 31, 2016)	56,240
Total revenue for 2016-17	258,740

2016-17 budget and expenses, continued

Activity	Budgeted (\$)	Expenses (\$)	Variance (\$)
Water Quality Program, Water Monitoring Initiative	57,800	37,716	20,084
Water Quality Program, Water Protection Initiative	72,500	75,691	-3191
Water Quality Contingency Fund	20,000	0	20,000
Recreation Safety Education Program	9500	12,760	-3260
Communications and Advocacy	27,500	15,587	11,913
Administration and Governance	29,000	35,672	-6672
Operating Reserve	42,440	0	42,440
Summary of expenses for 2016-17	258,740	177,426	81,314

Connect with us:

www.shuswapwater.ca

Contact program managers c/o Fraser Basin Council
200A – 1383 McGill Road, Kamloops
250 314-9660

evieira@fraserbasin.bc.ca • msimpson@fraserbasin.bc.ca

Chair Paul Demenok, CSRD Area C
250- 517-0810 | pdemenok@csrd.bc.ca

 uswapWater



/ShuswapWater