

Location

24
Twp 23 Range 13

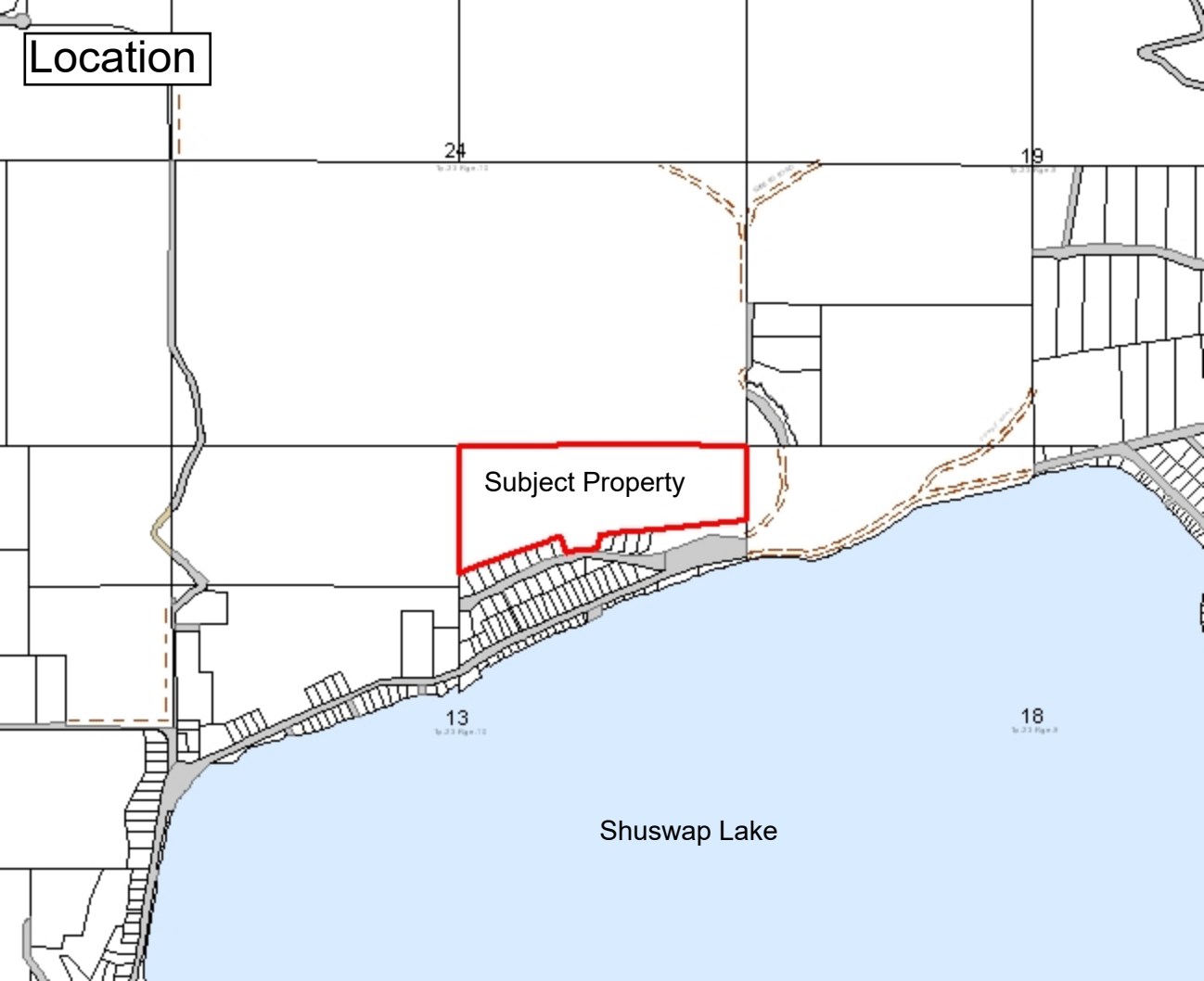
19
Twp 23 Range 19

Subject Property

13
Twp 23 Range 13

18
Twp 23 Range 18

Shuswap Lake



OCP

AG - Agriculture

RSC - Rural & Resource

RSC - Rural & Resource

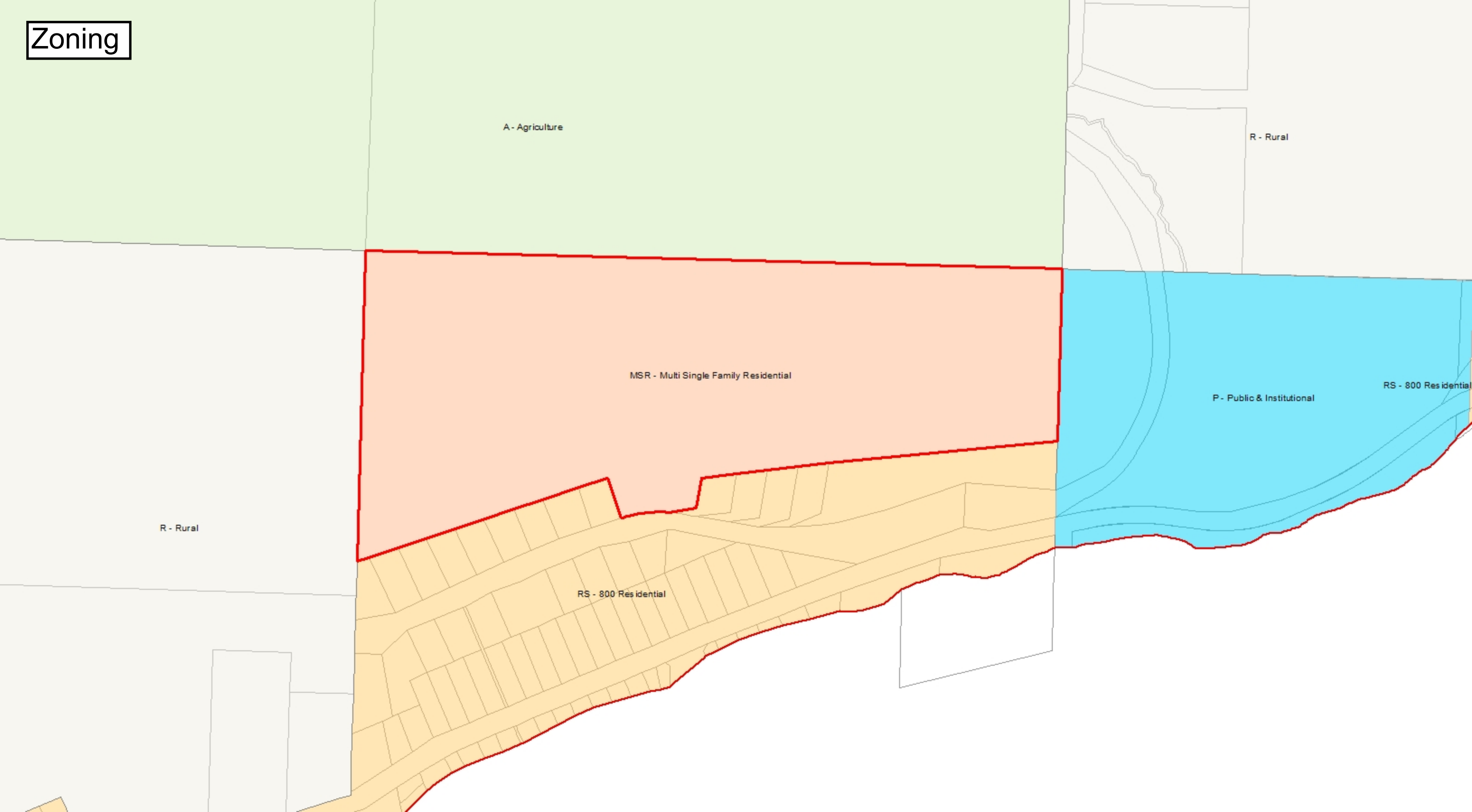
SSA - Secondary Settlement Area

PK - Parks & Protected Areas

FW - Fore shore Water

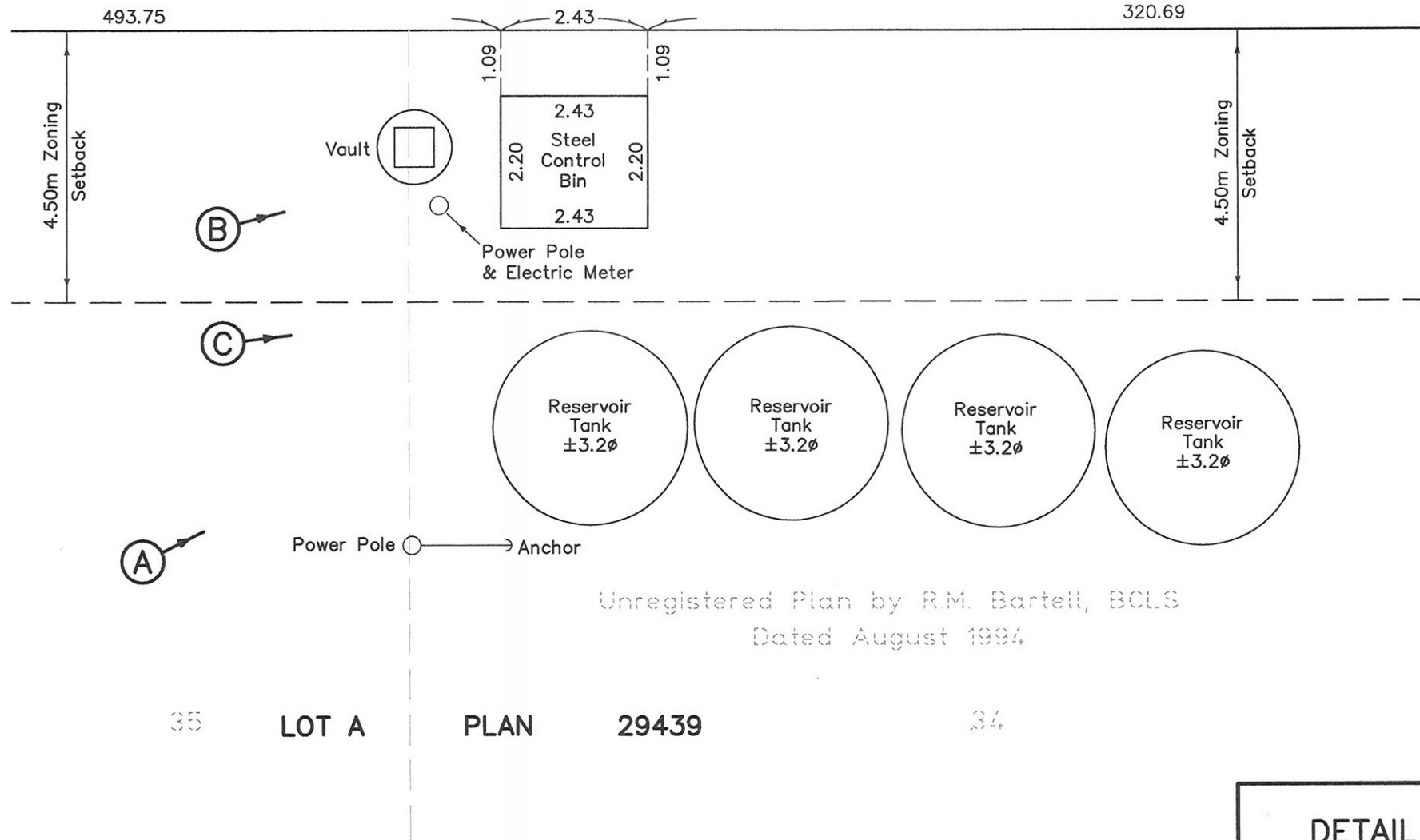


Zoning

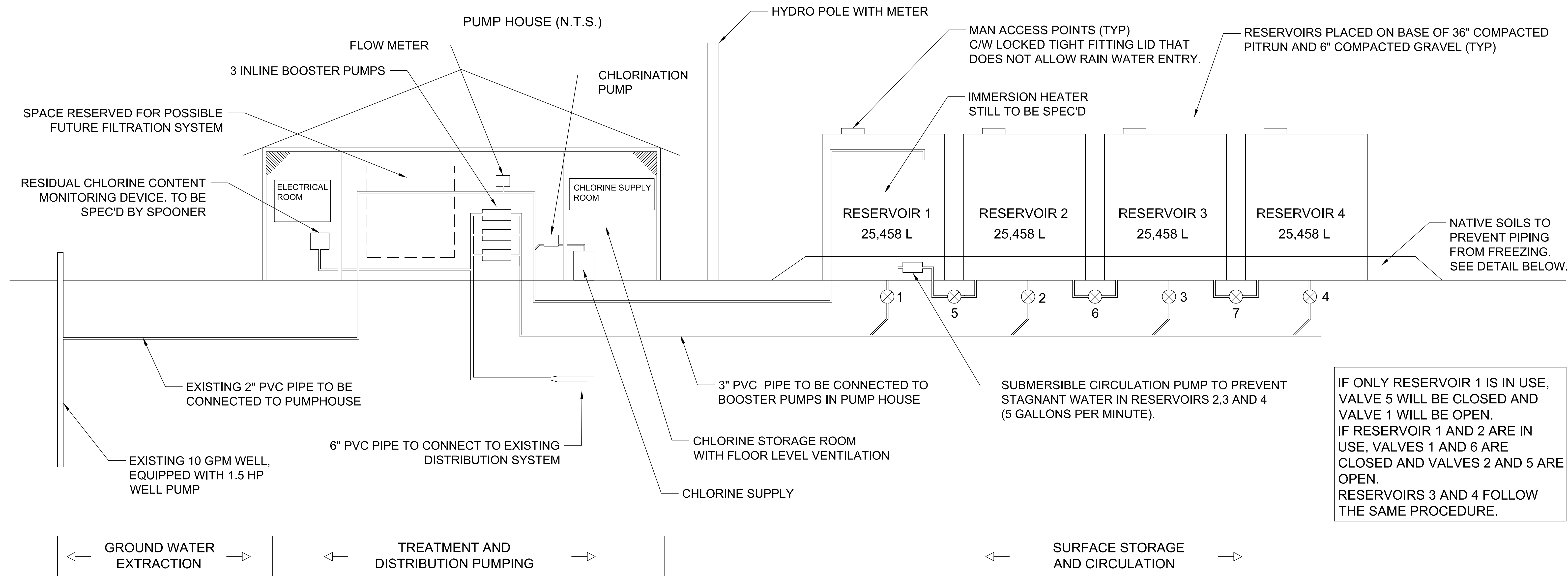


Site Plan

SE 1/4 Sec 24, Tp 23, R10, W6M



DETAIL
Scale 1:100



SCHEMATIC OVERVIEW
SCALE: N.T.S.

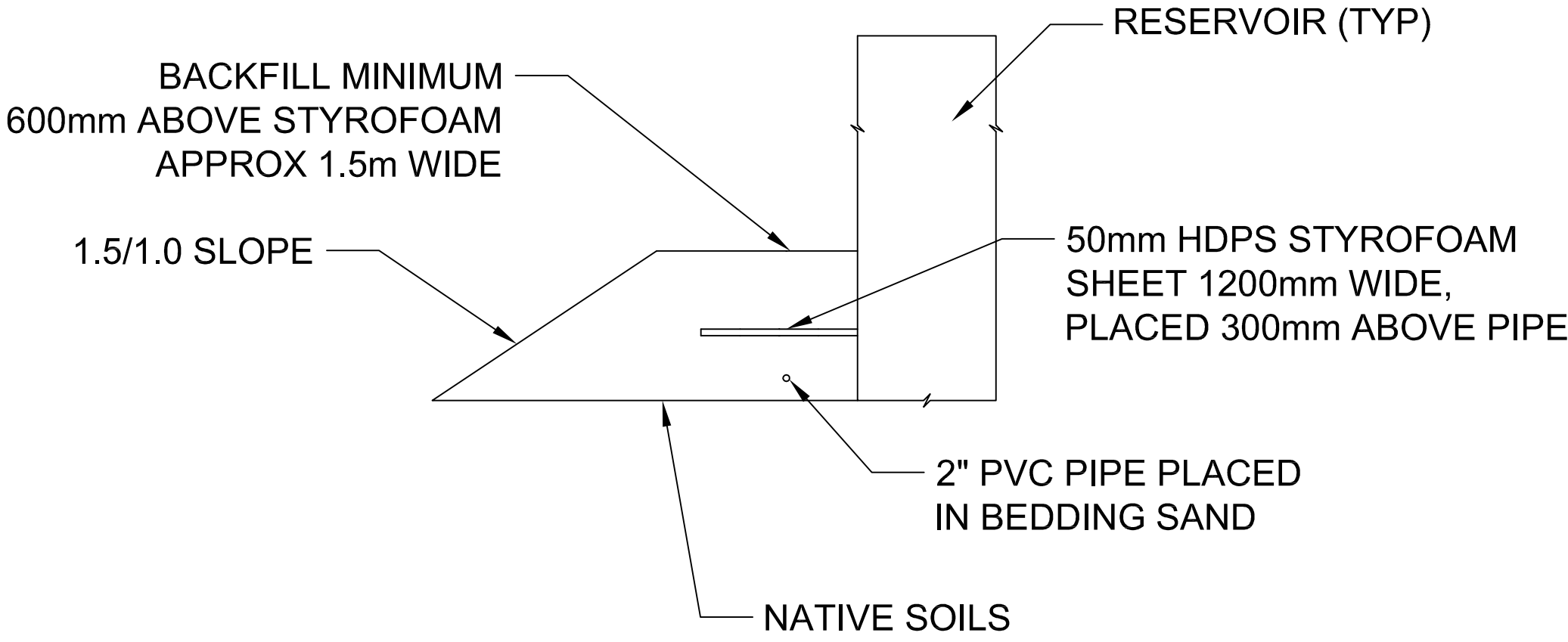
NOTE:
THIS WATER SYSTEM IS INTENDED FOR DISTRIBUTION OF WATER FOR DOMESTIC USE WITHIN MAGNA VISTA ESTATES.

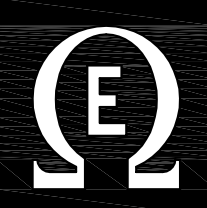
- * CHEMICAL FEED PUMP M-SERIES M3 OR EQUIVALENT
- * CHEMICAL FEED - SODIUM HYPOCHLORITE
- * INPUT CABLE AND FLOW MONITOR TO CONTROL DOSING ACTIVATION
- * 100 LITER CHEMICAL TANK

WINTER OPERATION:
RESERVOIRS 2 THROUGH TO 4 WILL BE MANUALLY DRAINED BEFORE THE WINTER AND THEREFORE DO NOT NEED TO BE INSULATED/HEATED. RESERVOIR 1 WILL BE PREVENTED FROM FREEZING BY WAY OF AN IMMERSION HEATER. HEATER TO BE SPECIFIED AT A LATER DATE.

INLINE BOOSTER PUMPS SYSTEM:
3 INLINE BOOSTER PUMPS WILL BE PLACED IN PARALLEL INSTALLATION. THE PUMPS WILL BE SET AT DIFFERENT OPERATION PRESSURES (65psi, 63psi AND 61psi) AND OPERATE DEPENDING ON THE WATER DEMAND. IT IS RECOMMENDED TO SWAP THE PRESSURE SWITCHES AT A MINIMUM OF ONCE PER YEAR TO ESTABLISH EVEN WEAR AND TEAR BETWEEN THE PUMPS. RECOMMENDED PUMP: FRANKLIN ELECTRIC SUBDRIVE INLINE 1100 OR EQUIVALENT.

DETAIL PIPE COVER
SCALE: N.T.S.



3	JVL	09-FEB-16	ISSUED FOR CONSTRUCTION PERMIT APPLICATION	Benchmark	CLIENT	SPOONER INDUSTRIAL	 OMEGA ENGINEERING SALMON ARM LLP CONSULTING CIVIL & STRUCTURAL ENGINEERS 9094 YOUNG ROAD, CHILLIWACK, BC V2Y 3A5 P 604.795.9052 F 604.795.6642 1105-6395 198 STREET, LANGLEY, BC V2Y 3A5 P 604.532.8800 F 604.532.8893 121 HUDSON AVENUE, SALMON ARM, BC V2S 8A3 P 250.833.5643 F 250.833.5641	DRAWN JVL DATE 14-NOV-14	TITLE WATER SUPPLY PLANT SCHEMATIC AND SPECIFICATIONS	DRAWING NO. 2014-436-C-02
2	JVL	09-NOV-15	ISSUED FOR DISCUSSION WITH IH	Scale AS NOTED	PROJECT	MAGNA VISTA ESTATES MAGNA VISTA ESTATES		DESIGNED JVL DATE 14-NOV-14		SHEET 2 OF 2
1	JVL	18-DEC-14	2nd DRAFT FOR REVIEW					APPROVED/CHECKED TD DATE		
0	JVL	25-NOV-14	DRAFT FOR REVIEW							
REV.	BY:	CH:	DATE	REVISIONS						



Orthophoto

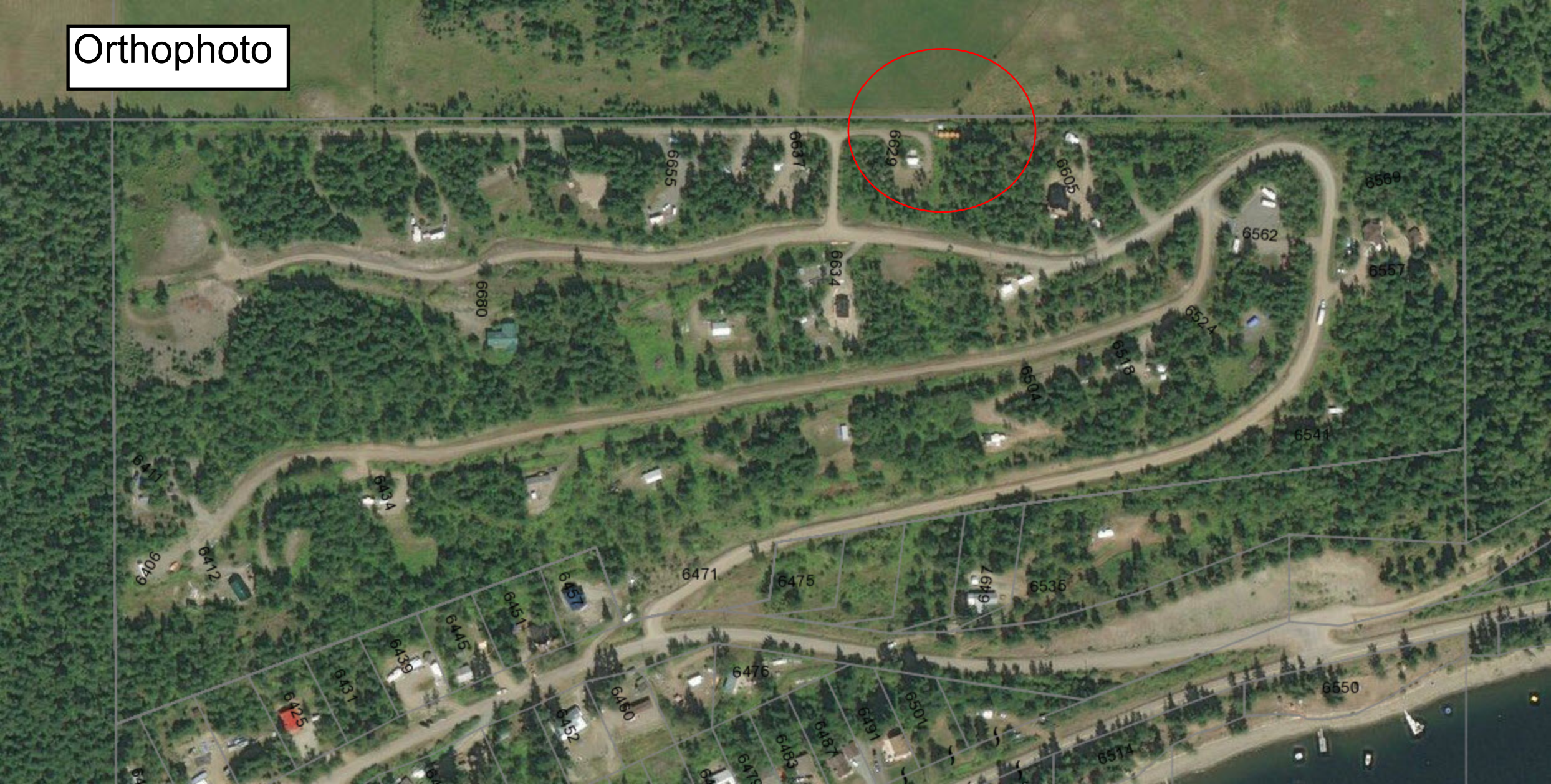




Photo taken August 8, 2013



BSBU 858574 Z

MAX. GR.	6,000	KG
	13,230	LB
TARE	950	KG
	2,100	LB
PAYLOAD	5,050	KG
	11,130	LB
CUB. CAP.	351.7	CUFT

2011/05/25



BigSteelBox.com
1-800-373-1187
Rent.Buy.Modify.

B
S
B
U
8
5
8
5
7

PUMPTEC PLUS

2011/05/25



igteeOX.m
MOBILORAGE SON
0-37-118
ntbuy.pditi



2011/05/25



2011/05/25