

'District 101'



Ministry of Transportation and Infrastructure
Okanagan Shuswap District



Ministry of
Transportation
and Infrastructure

Agenda

- How the Okanagan Shuswap District fits into MOTI
- What do we do?
- How we can interact
- Questions

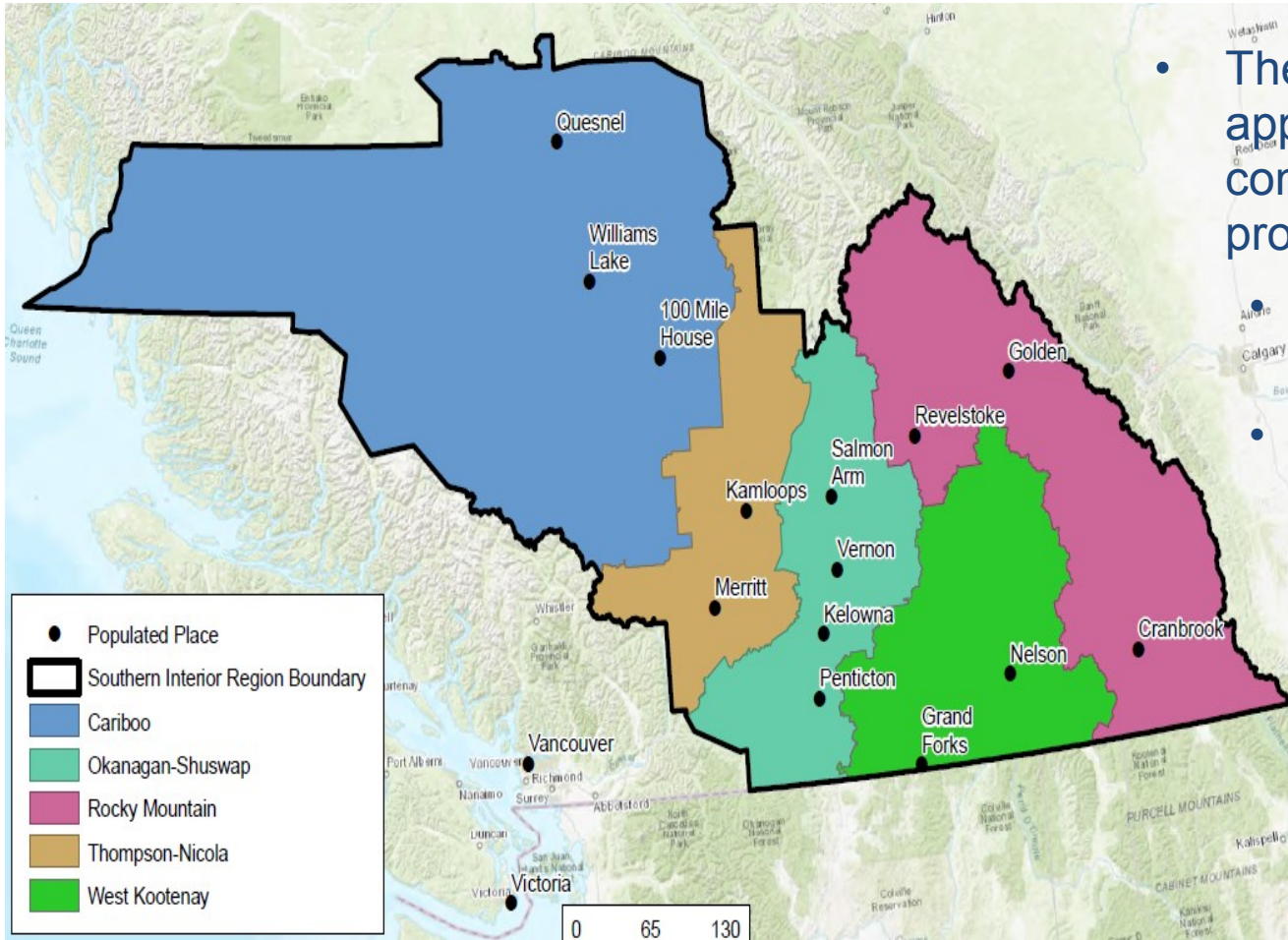


MOTI – Highways Department

- The department has over 1,100 staff in communities throughout the province, including:
 - 3 Regional Offices
 - 11 District Offices
 - 19 Community Offices
 - 26 Field Construction Offices
 - 31 Weigh Scales/Inspection Stations
 - 420 Marked Vehicles



MOTI - Southern Interior Region



- The region has approximately 400 staff in communities throughout the province, including:

Regional Office in Kamloops

- 5 Districts
 - Cariboo
 - Okanagan Shuswap
 - Rocky Mountain
 - Thomson Nicola
 - West Kootenay

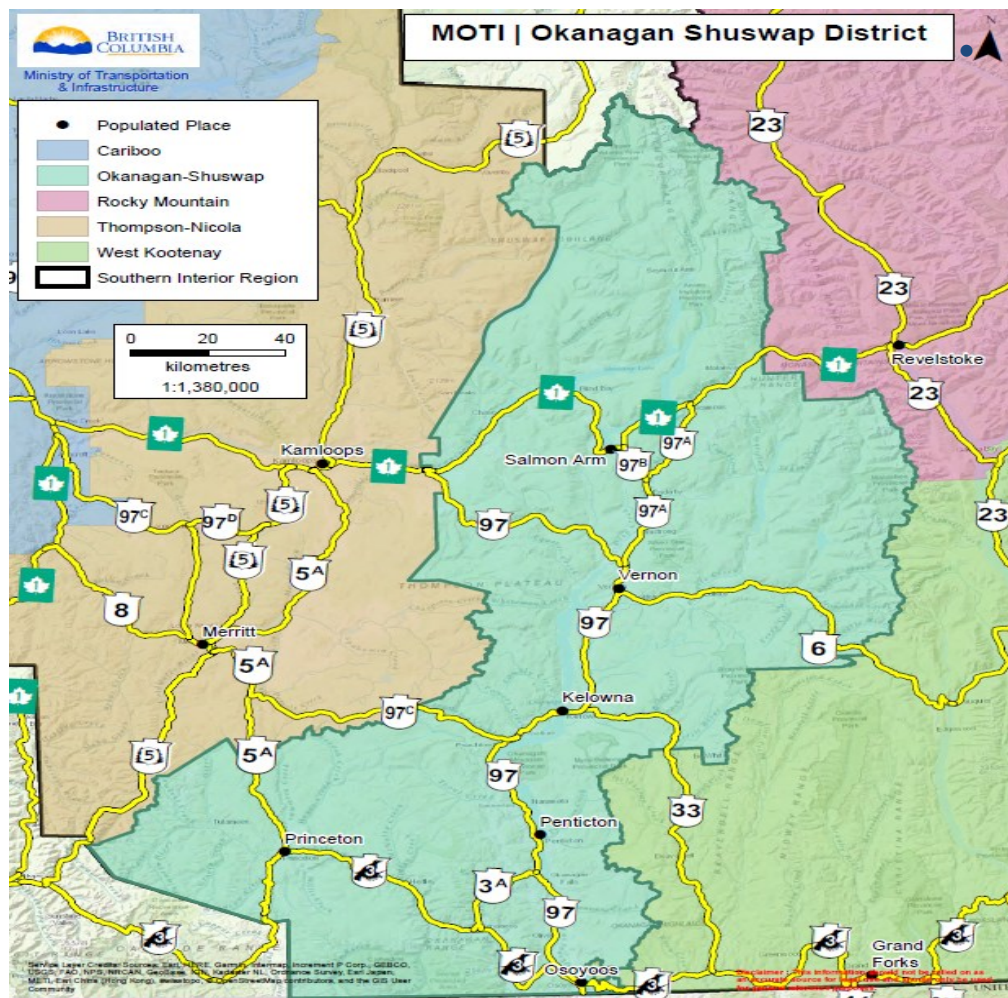


Ministry of Transportation and Infrastructure
Okanagan Shuswap District



Ministry of
Transportation
and Infrastructure

MOTI – Okanagan Shuswap District



The district has 44 members in communities throughout the Okanagan Shuswap:

- 4 district offices
 - Kelowna, Penticton, Vernon, Salmon Arm
- 2 CVSE Inspection Scales
 - Vernon & Kaleden
- 3,800 km of provincial network roads (2050 paved and 1750 unpaved)
- 1,050 km of numbered highway routes
- 240 bridges



Ministry of Transportation and Infrastructure
Okanagan Shuswap District



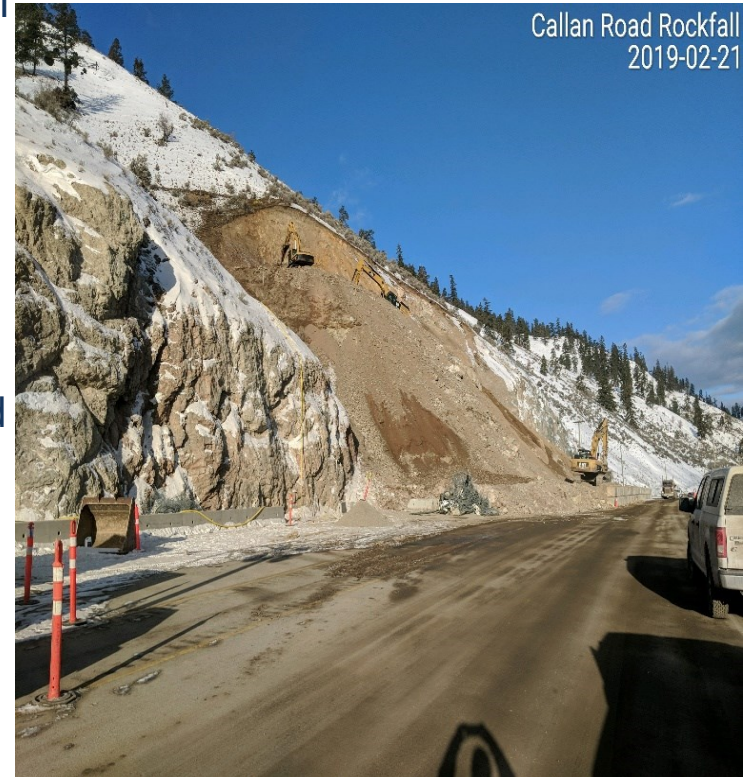
Ministry of
Transportation
and Infrastructure

What we do!



Operations

- Administer the Maintenance Contracts
- Work closely with the public, Municipalities, Regional Districts and Indigenous communities
 - Identify and prioritize rehabilitation and infrastructure improvement opportunities
- Emergency Response;
 - Motor vehicle incidents,
 - Landslides, flooding, and wildfires
 - Ensure public highways are repaired safely and efficiently



Ministry of Transportation and Infrastructure
Okanagan Shuswap District



Ministry of
Transportation
and Infrastructure

Operations

Maintenance Contracts

- Each maintenance activity has an associated specification that the contractor must adhere to.
- General Specifications;
 - **Surface** – Potholes, grading, sweeping
 - **Drainage** – Ditches, culverts
 - **Winter** – plowing, patrols
 - **Roadside** – Mowing, litter
 - **Traffic** – Signs, traffic management
 - **Structures** – Bridges, retaining walls
 - **Network** – Incidents, emergency response, patrols
 - **Local Area Specifications** – Lane closure restrictions
- Our team monitors and audits based on these specifications
- End Product Spec



Operations

Spring\Summer Maintenance '101':

- Maintenance activities and response times vary depending on classification of road.
- Summer Classifications based on Average Daily Traffic.

CLASS	Vehicles Per Day (ADT)
1	Over 10,000
2	5,000 – 10,000
3	1,000 – 5,000
4	500 – 1,000
5	100 – 500
6	10 – 100
7	0-10
8	Not constructed or open



Operations

Spring\Summer Maintenance '101':

Asphalt pavement maintenance –Potholes

PM1.01.2-1 Construct Temporary Patches consistent with the profile and crossfall of the adjacent surface as follows:

Performance Criteria	Minimum Severity Level	Response by Highway Classification				
		1&2	3	4	5	6&7
a) Pot-hole on Travelled Lane or Shoulder of inside curve	high	1 d	2 d	3 d	7 d	14 d
b) Pot-hole on Shoulder of outside curve or tangent	high	3 d	7 d	10 d	21 d	45 d
c) Pot-hole on right Shoulder of divided Highway	high	1 d	2 d	3 d	7 d	14 d
d) Pot-hole on left Shoulder of divided Highway	high	3 d	7 d	10 d	21 d	45 d
e) Bleeding on Travelled Lane or Shoulder of inside curve	high	1 d	2 d	3 d	7 d	14 d
f) Bleeding on Shoulder of outside curve or tangent	high	3 d	7 d	10 d	21 d	45 d
g) Distortion on Travelled Lane or Shoulder	high	1 d	2 d	3 d	7 d	14 d

Operations

Maintenance Contract Renewal

Acciona Infrastructure Maintenance – AIM Roads

- Toll Free 24\7 Contact – 1-866-222-4204
 - Website - www.aim-roads.ca
 - Twitter - @AimRoads
 - Facebook - <https://www.facebook.com/AIMRoads/>
 - Instagram - <https://www.instagram.com/aimroads.ca/?hl=en>
-
- Link to Highway Maintenance Agreement:
<https://www2.gov.bc.ca/gov/content/transportation/transportation-infrastructure/contracting-to-transportation/highway-bridge-maintenance/highway-maintenance/agreement>



District Program (Safety and Rehabilitation)

- Developing Multi-Year Rehab Program
 - Working with variety of staff and stakeholders to identify, prioritize and deliver the District Rehab program
- Maintenance & Rehab Programs
 - Sideroad longitudinal pavement marking
 - Transverse pavement marking
 - Cattleguard
 - Danger Tree
 - Minor betterments
 - Guardrail Installation
- Emergency Response & Recovery
- Safety Program
- Community Safety Enhancement Program



Development Services

- Manage Local Government land used decision within 800m of a highway
 - Bylaws, Development Permits, Land Use Contracts, Municipal Subdivisions
- Manage use of ministry Right-of-Way through permitting
 - Utilities, landscaping, sidewalks, pathways, etc
- Support the Provincial Approving Officer through processing and reporting on Rural Subdivisions.

Goals:

- **Support development**,
- Protect safety, mobility and capacity of the highway system
- Protect the provincial public Investment in the highway network.



Ministry of Transportation and Infrastructure
Okanagan Shuswap District



Ministry of
Transportation
and Infrastructure

Provincial Approving Officer

- Responsible for the review of subdivision applications in rural areas.
- An independent statutory decision maker appointed by Provincial Order in Council.
- Although an employee of the Ministry of Transportation, does not make subdivision decisions for the Ministry.
- Bases decisions on many factors and information including various Provincial Acts and Regulations, local government bylaws and other information (referrals).
- The subdivision process includes a preliminary and final process. The preliminary process includes referrals to various agencies including regional districts.
- The decision of an approving officer is not to be fettered



Commercial Vehicle Safety and Enforcement (CVSE)

- Promote safe and efficient movement of goods to support the economy
- Protecting Provincial Infrastructure
 - Fixed Weighscales, Mobile patrols, Roadchecks
- Commercial and Private Vehicle Inspection Programs
 - Audit private shops conducting mandatory inspections
- Monitoring the Passenger Transportation Industry
 - Taxi's and busses
- Inspecting every school bus in the province annually
 - All buses supported by provincial funding transporting kids
- Conducting driver and mechanical inspections to ensure road safety for all users.
 - Mechanical condition, Cargo Security and Driver hours of service



Ministry of Transportation and Infrastructure
Okanagan Shuswap District



Ministry of
Transportation
and Infrastructure

How we can interact

Operations

- Jeff Wiseman, Service Area 08 Operations Manager – Jeff.Wiseman@gov.bc.ca – 250-490-2227
- Danny Morris, Service Area 13 Operations Manager – Danny.Morris@gov.bc.ca – 250-503-3632

District Program

- Ryan Thorpe, District Program Engineer – Ryan.Thorpe@gov.bc.ca – 250-212-7329

Development Approvals

- Robyn Clifford, Sr. DA Tech (RDCO, RDOS & RDKB) – Robyn.Clifford@gov.bc.ca – 250-712-3665
- Dave Solberg, Sr. DA Tech (RDNO & CSRD) – David.Solberg@gov.bc.ca – 250-503-3607

Provincial Approving Officer

- Bill Sparkes, PAO – Bill.Sparkes@gov.bc.ca – 250-490-2229

Commercial Vehicle Safety & Enforcement

- Perry Therrien, CVSE Manager – Perry.Therrien@gov.bc.ca – 250-861-7381

Steve Sirett, District Manager – Steve.Sirett@gov.bc.ca – 250-712-3666

QUESTIONS?



Ministry of Transportation and Infrastructure
Okanagan Shuswap District



Ministry of
Transportation
and Infrastructure