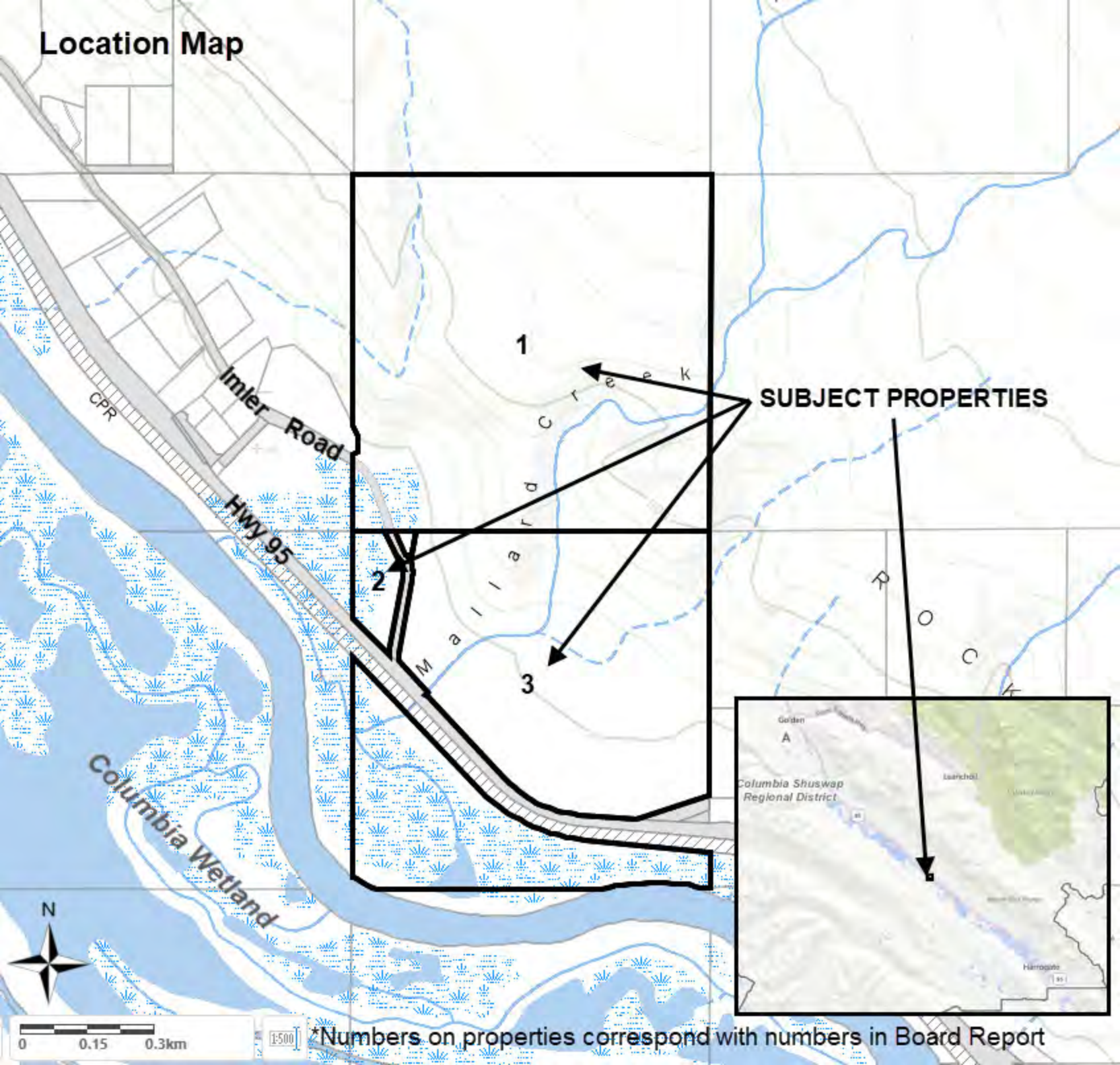


Location Map



*Numbers on properties correspond with numbers in Board Report

**Agricultural Land
Reserve**

Columbia Wetland

A

C

B

L

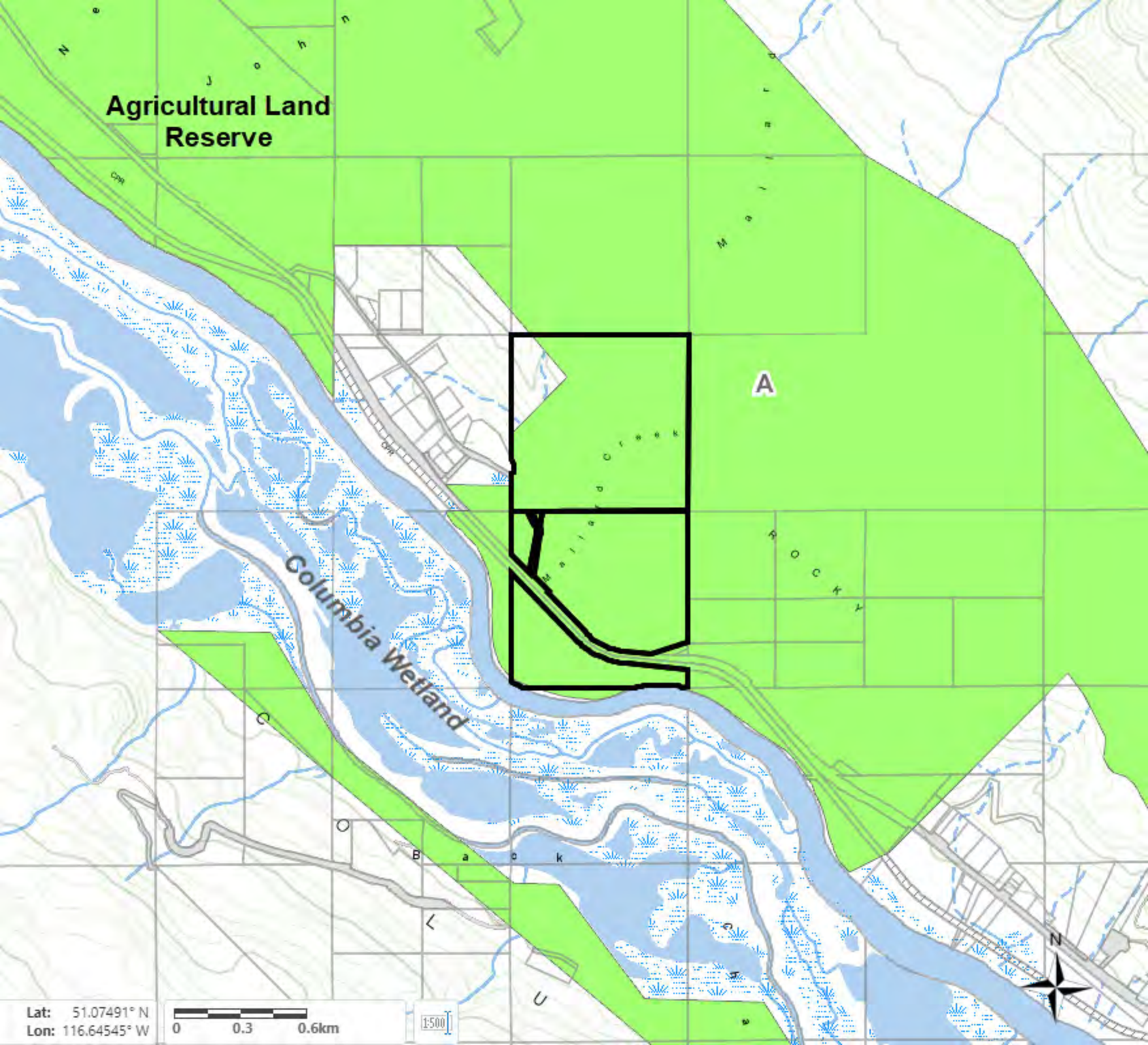
U

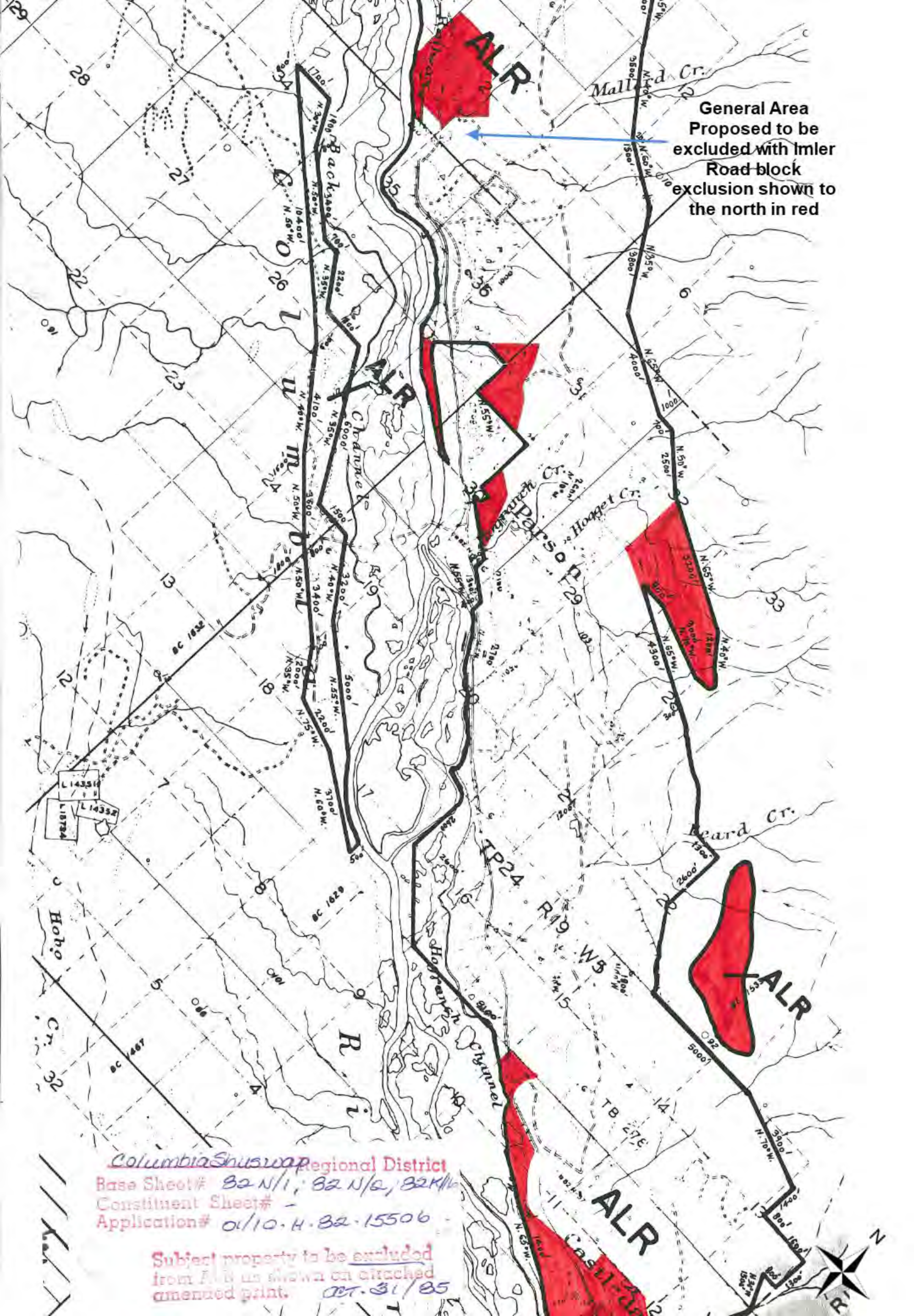
Lat: 51.07491° N
Lon: 116.64545° W

0 0.3 0.6km

1:500

N





General Area
Proposed to be
excluded with Imler
Road-block
exclusion shown to
the north in red

Columbia Shuswap Regional District
Base Sheet# 82 N/1, 82 N/2, 82 K/1
Constituent Sheet#
Application# 01/10-H-82-15506
Subject property to be excluded
from ALR as shown on attached
amended print. OCT. 31/85

Soil Capability

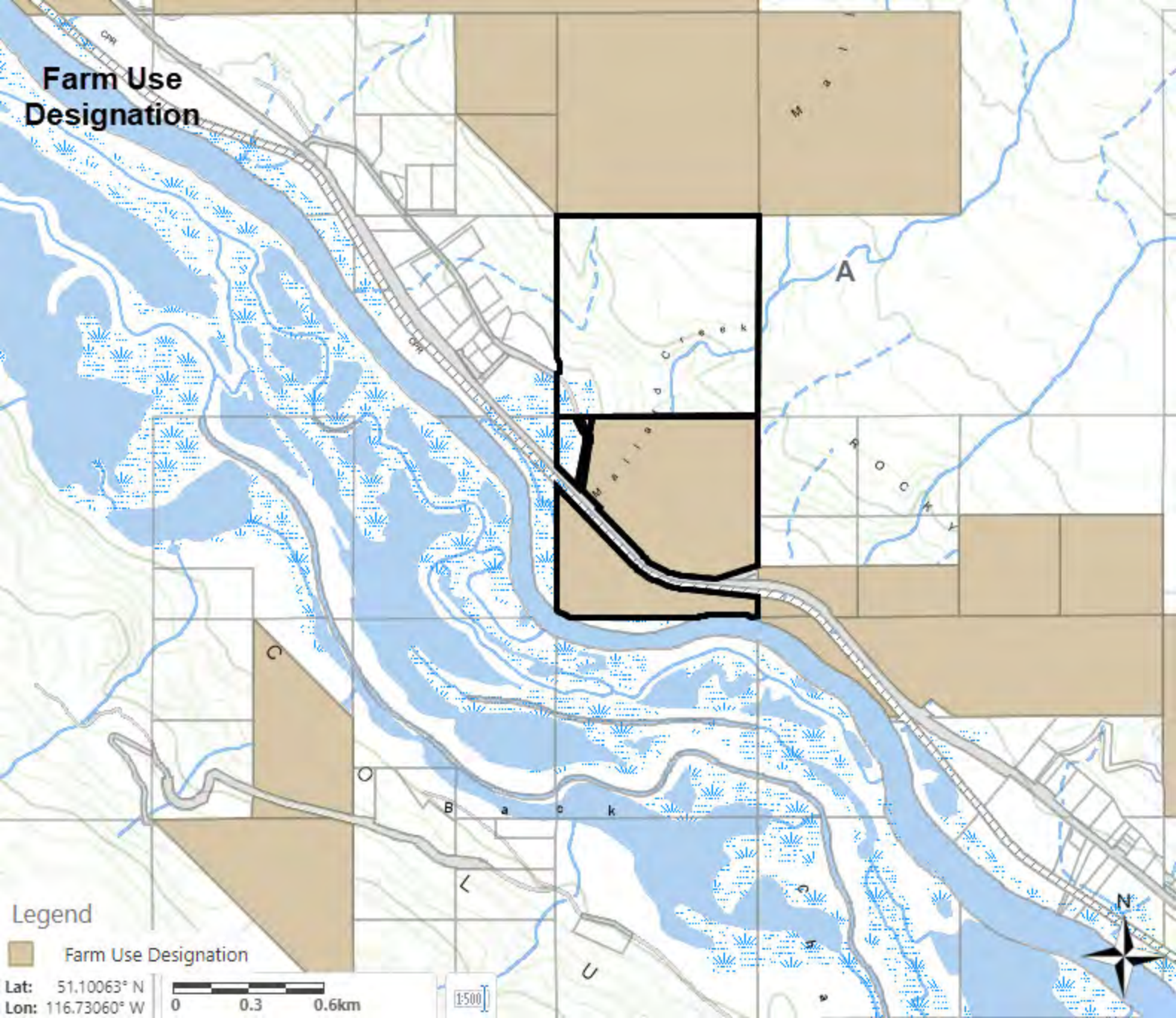
5PT
(5PT)

6TP


6.5FT-4.4ST
(6: 4FT-4.3T)



Farm Use Designation



Legend

 Farm Use Designation

Lat: 51.10063° N

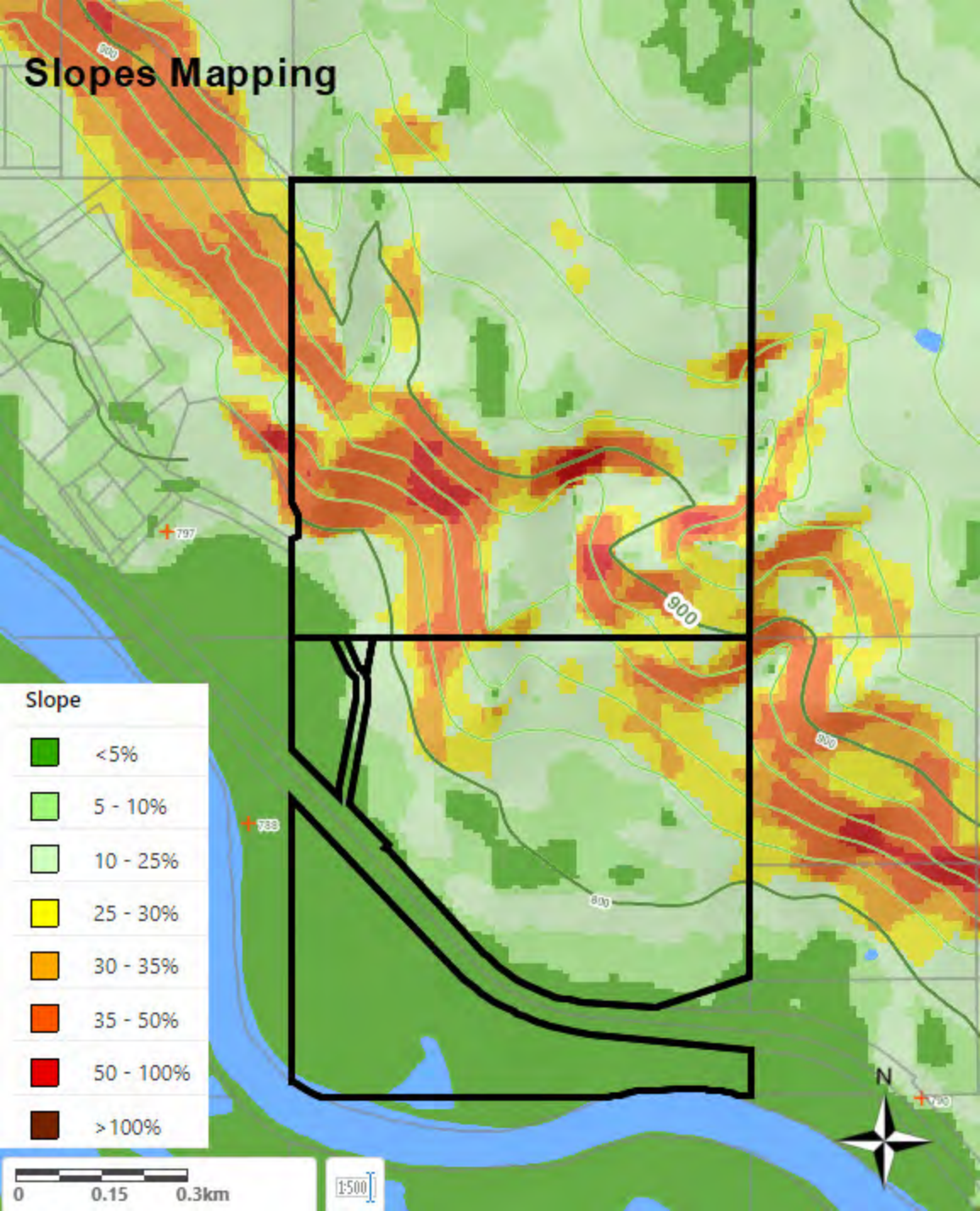
Lon: 116.73060° W

0 0.3 0.6km

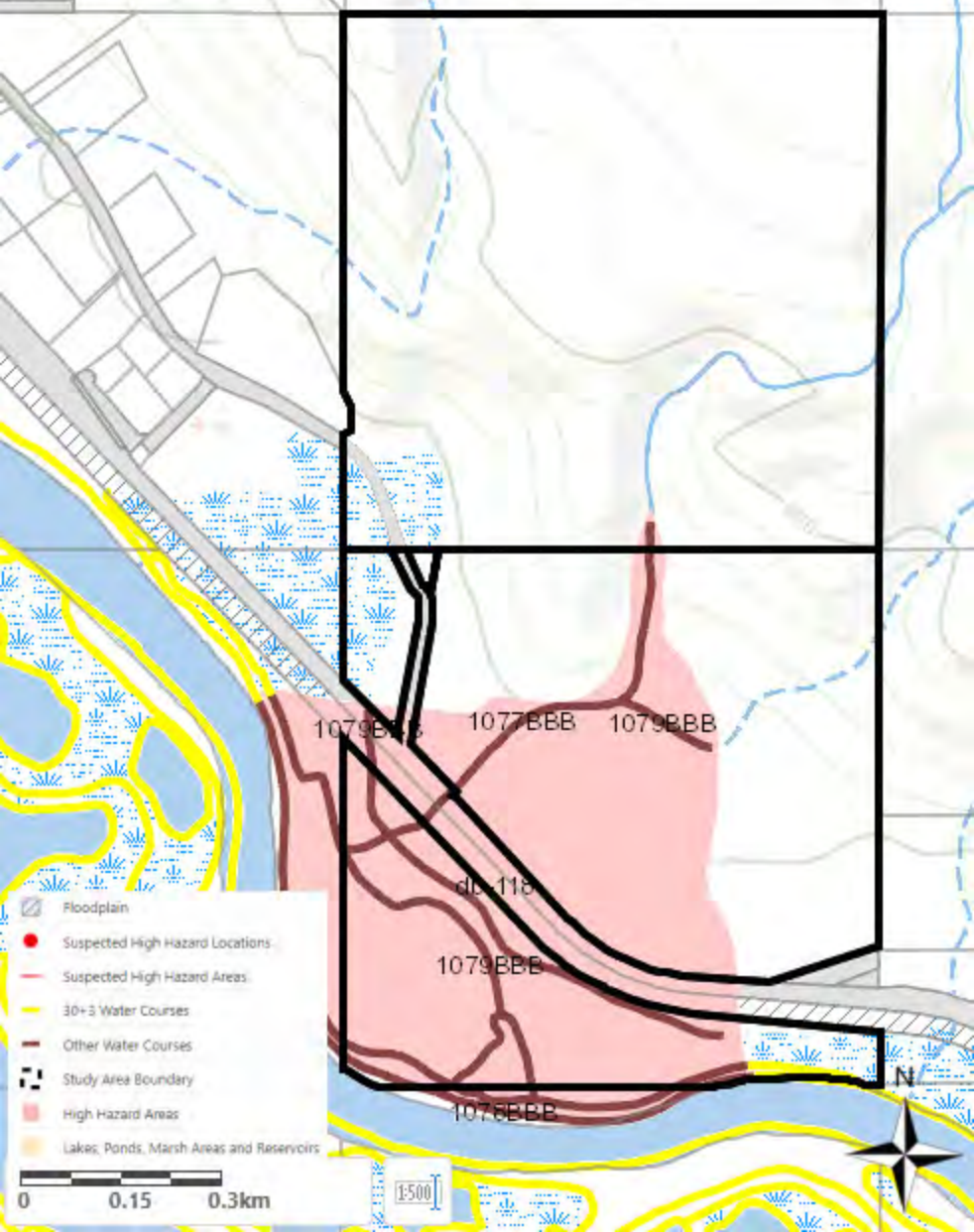
1:500



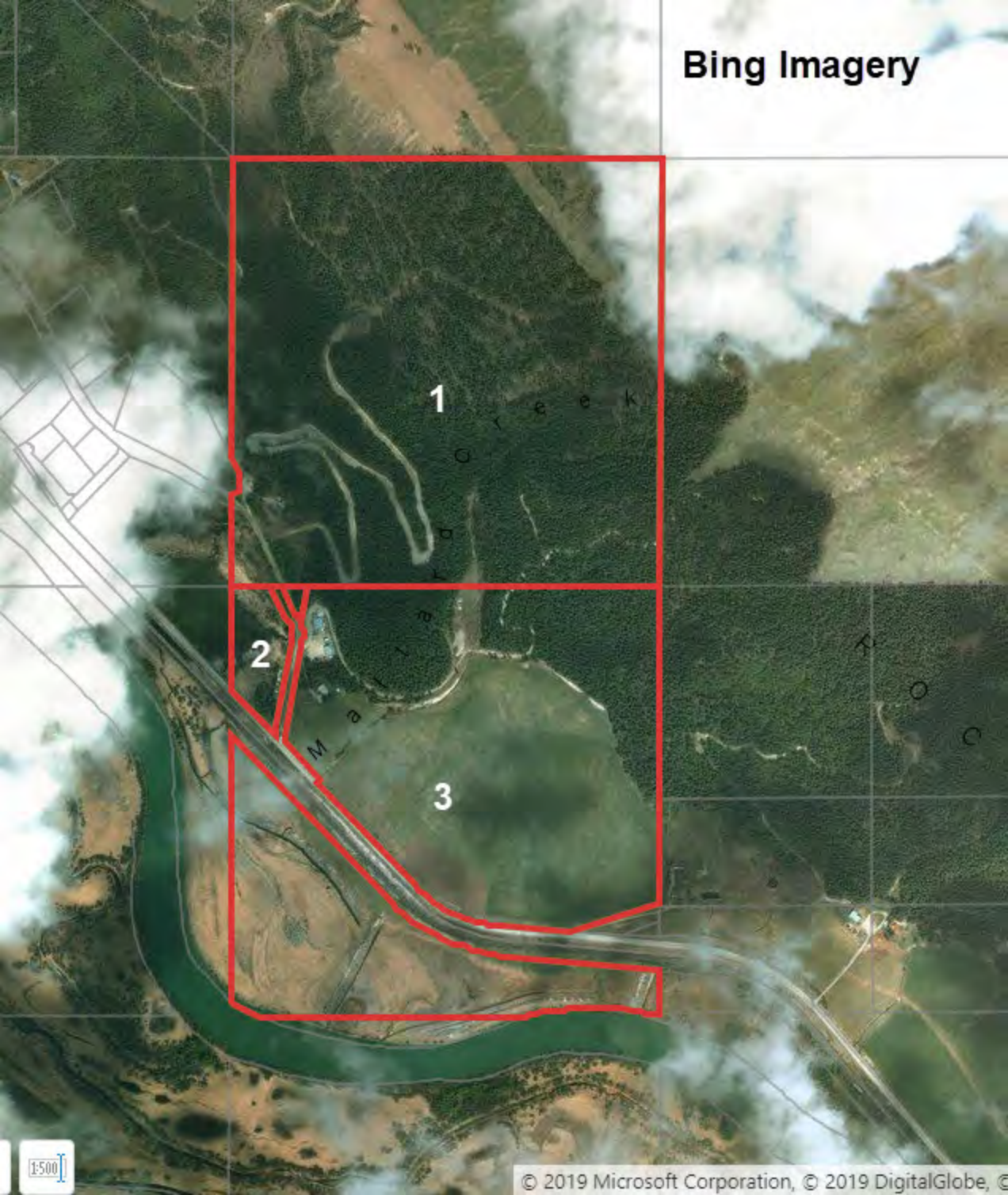
Slopes Mapping



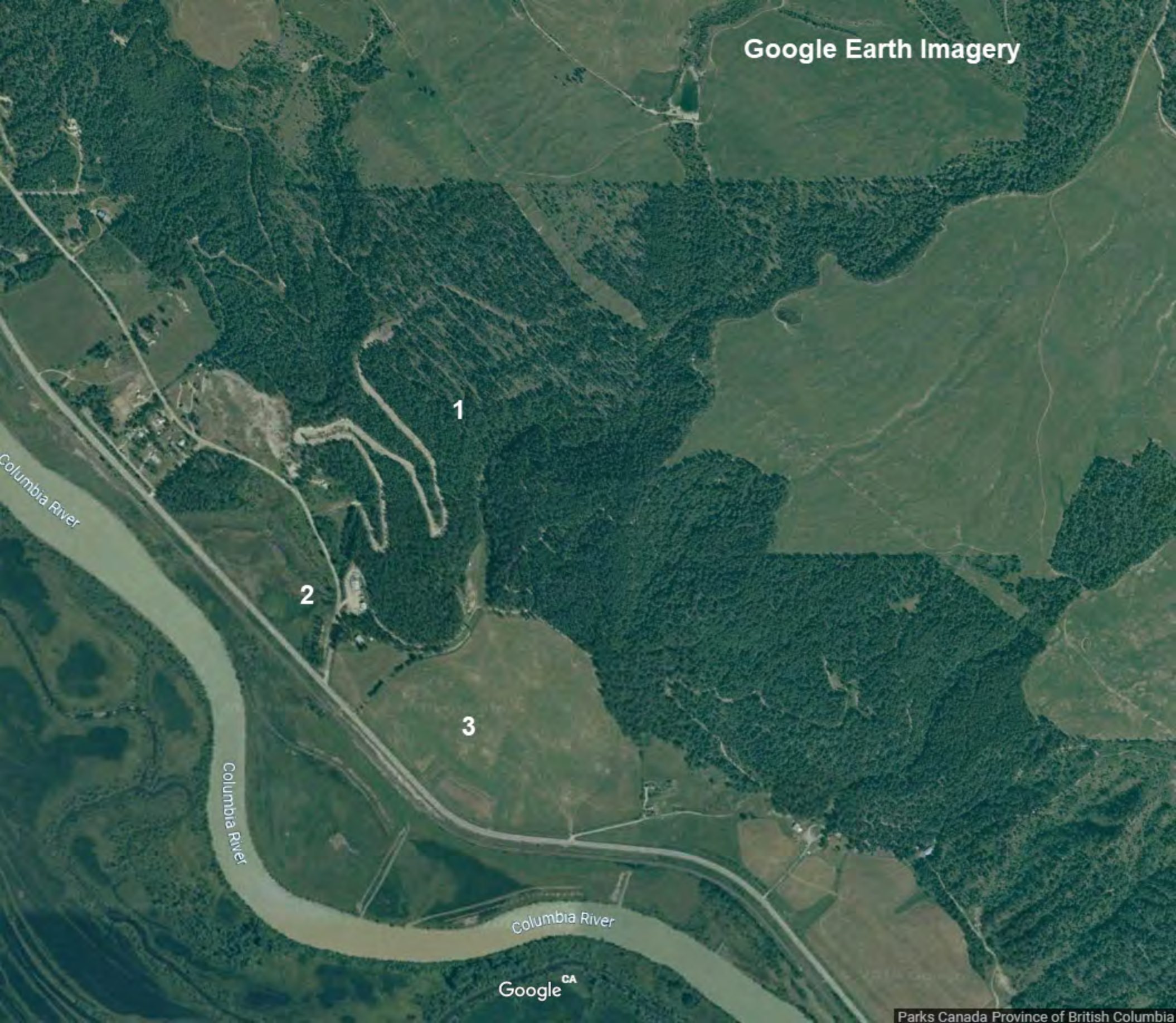
Flood Hazard Mapping



Bing Imagery



Google Earth Imagery



1

2

3

Columbia River

Columbia River

Columbia River

Google^{CA}

Parks Canada Province of British Columbia

PID 016-563-573:

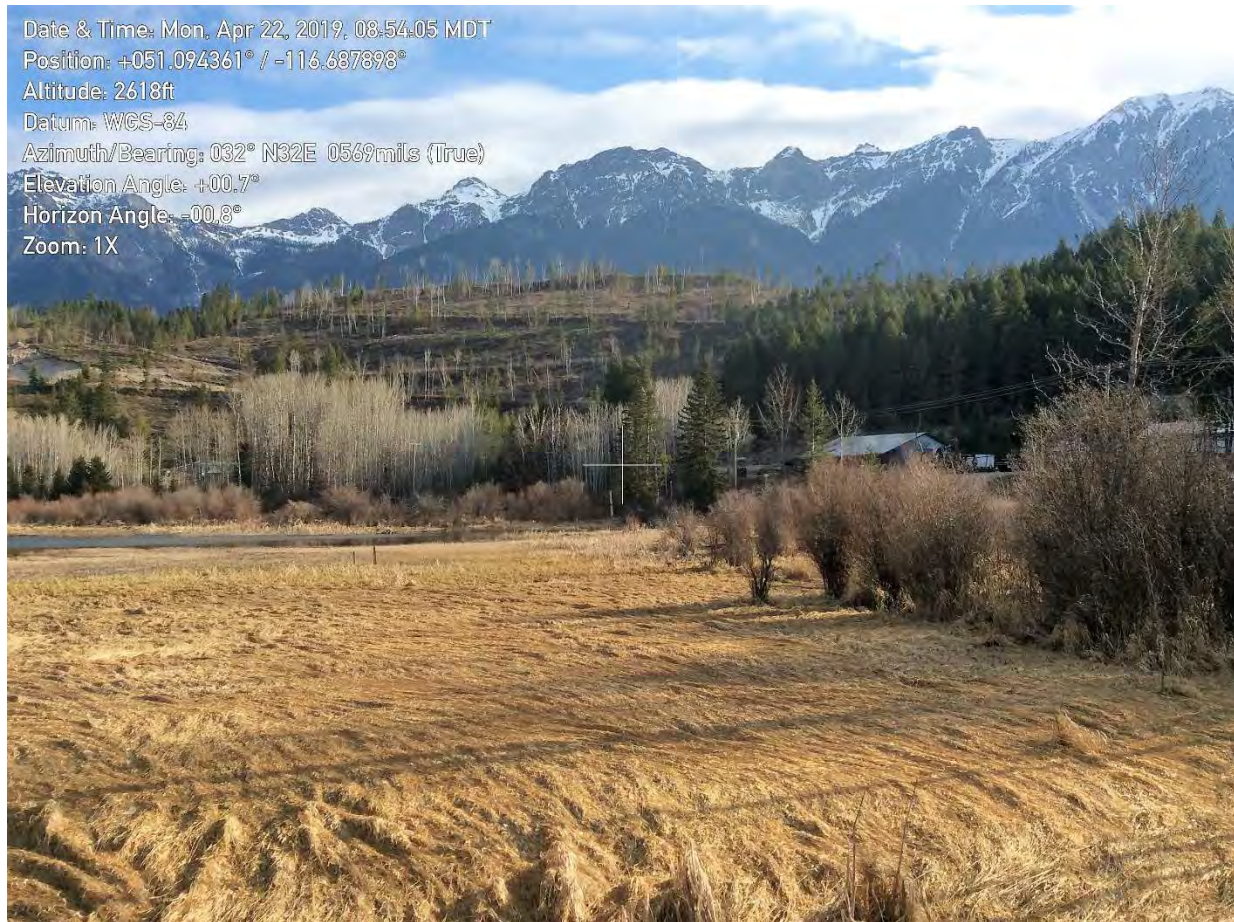


Photo 1: Parcel PID 016-563-573 looking North in the for ground. Most of this parcel is a swamp and approximately 70% is water logged.



Photo 2: Looking South at the swamp in PID 016-563-573 from parcel PID 016-563-549

PID 016-563-549:

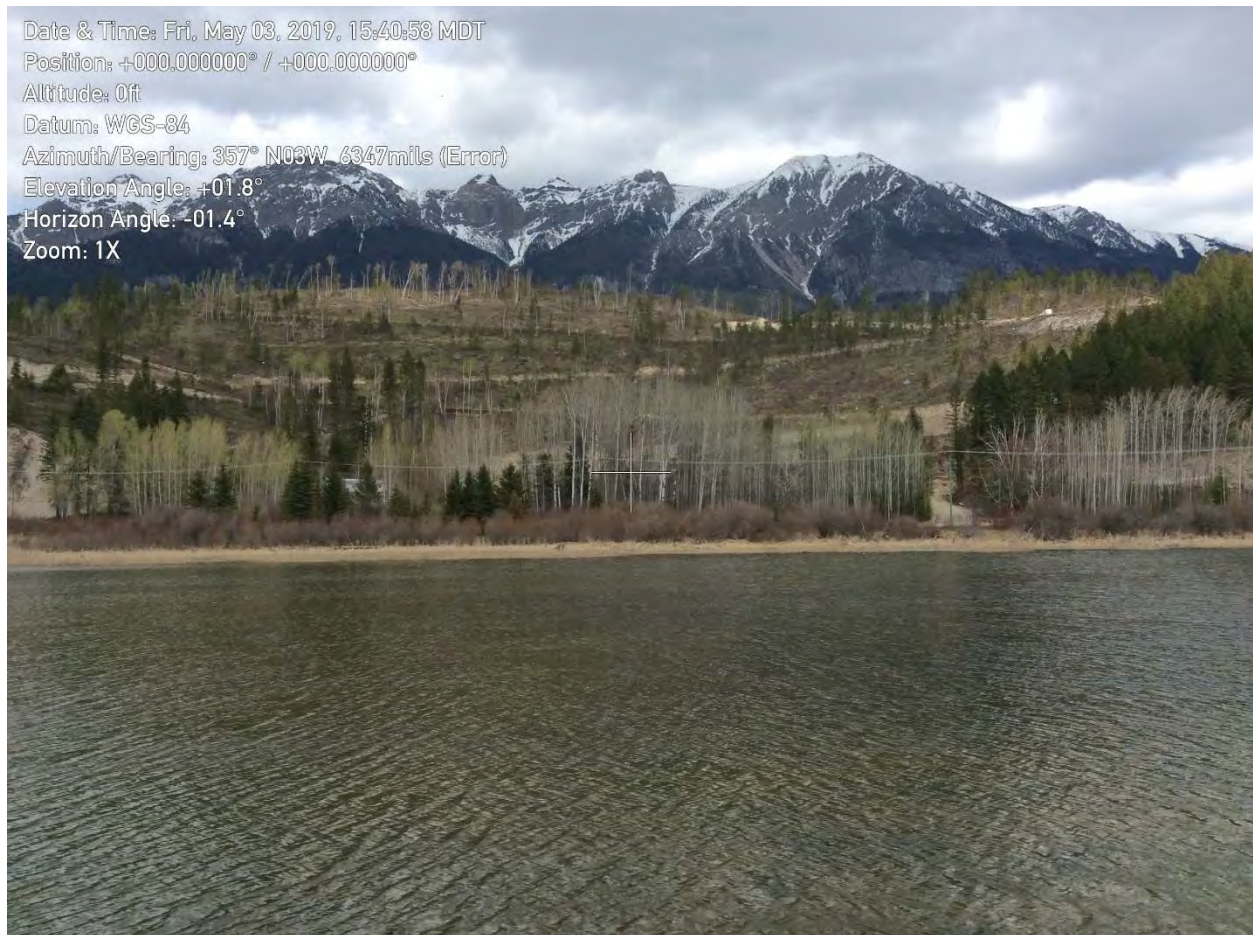


Photo 3: Looking East from Highway 95 at the lower part of PID 016-563-549.



Photo 4: Representative view of the lower portion of PID 016-563-549. Slopes range from 35-50%. This area represents approximately 65% of PID 016-563-549 and it has very low/low agricultural value.



Photo 5: Second representative view of the lower portion of PID 016-563-549. Slopes range from 35-50%.



Photo 6: Representative sandy soils of the steeper sections of PID 016-563-549



Photo 7: Second representative soil sample of the steeper sections of PID 016-563-549.



Photo 8: Gravel pit in PID 016-563-549.



Photo 9: Representative view of the upper portion of PID 016-563-549. Slopes range from 10-25%. This area represents approximately 35% of PID 016-563-549 and it has moderate agricultural value.



Photo 10: Representative soil sample of the upper sections of PID 016-563-549.

PID 024-372-064:



Photo 11: Representative view of PID 024-372-064. Slopes range from 25-50%. This area has very low/low agricultural value.



Photo 12: Representative soil sample in PID 024-372-064.



Photo 13: Gravel pit in PID 024-372-064.