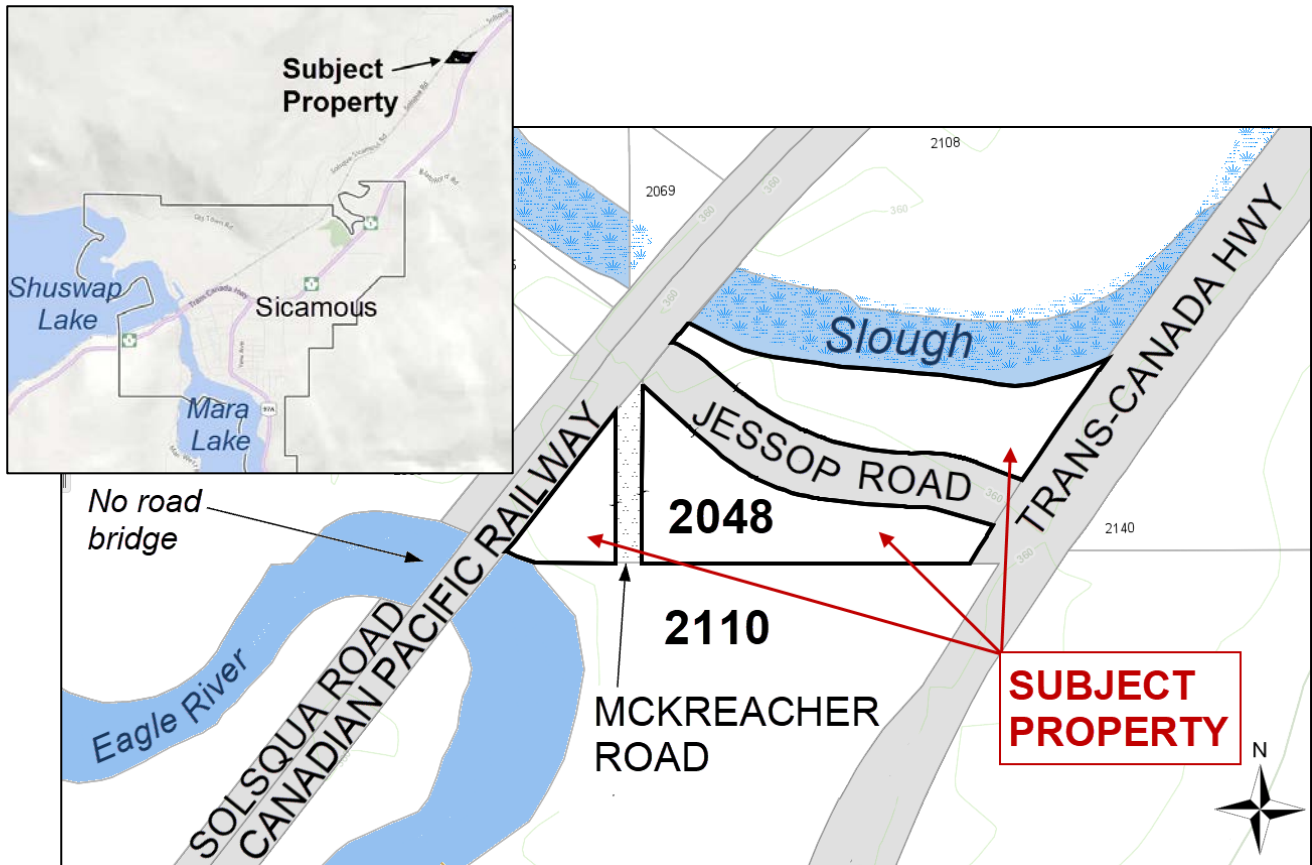
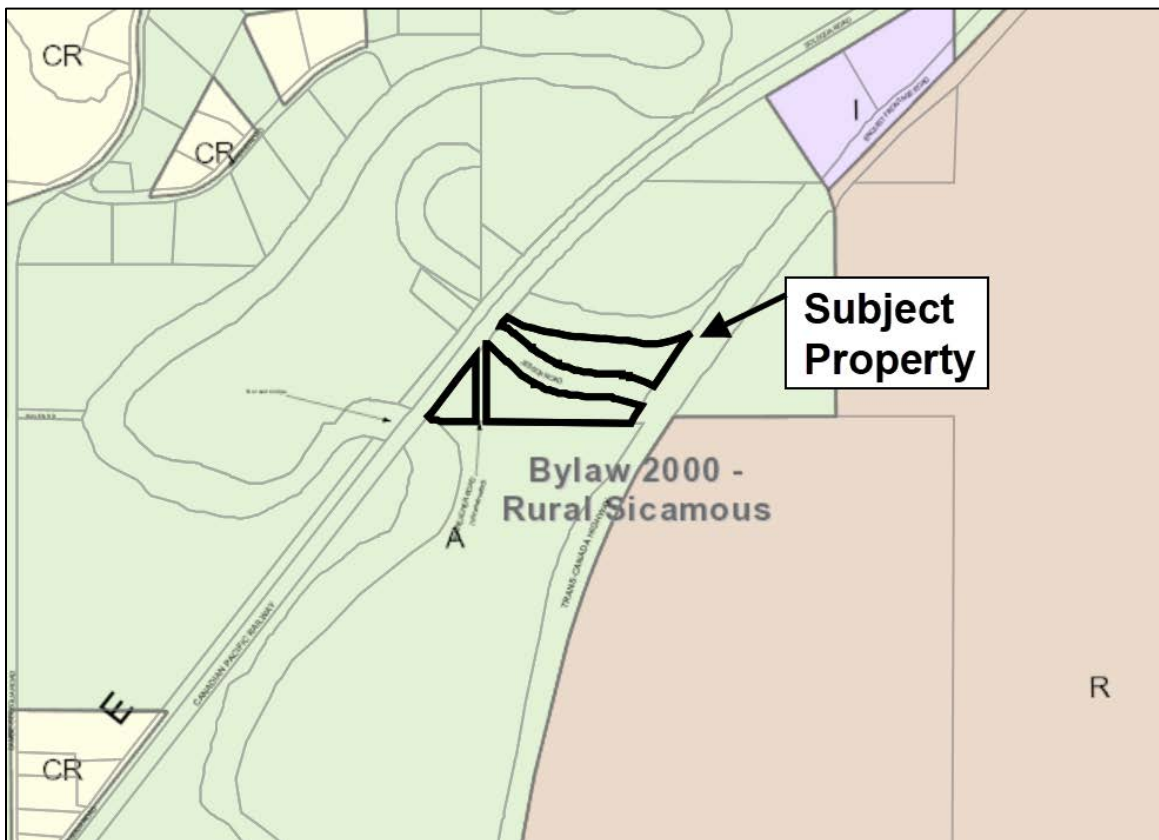


Location



OCP/Zoning



Site Plan

PLAN EPP81766

Reference Plan of Part of
Lot 1, Sec 16 and 17, Tp 22, R 7,
W6M, KDYD, Plan NEP61793

Except Plan EPP81765
Pursuant to Section 99(1)(h)(i) of the Land Title Act.
BCGS 82L.086

The intended plot size of this plan is 550mm in width by 864mm in height (D size)
when plotted at a scale of 1:1250

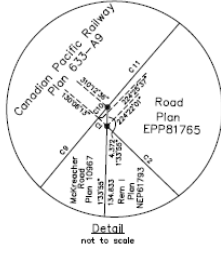
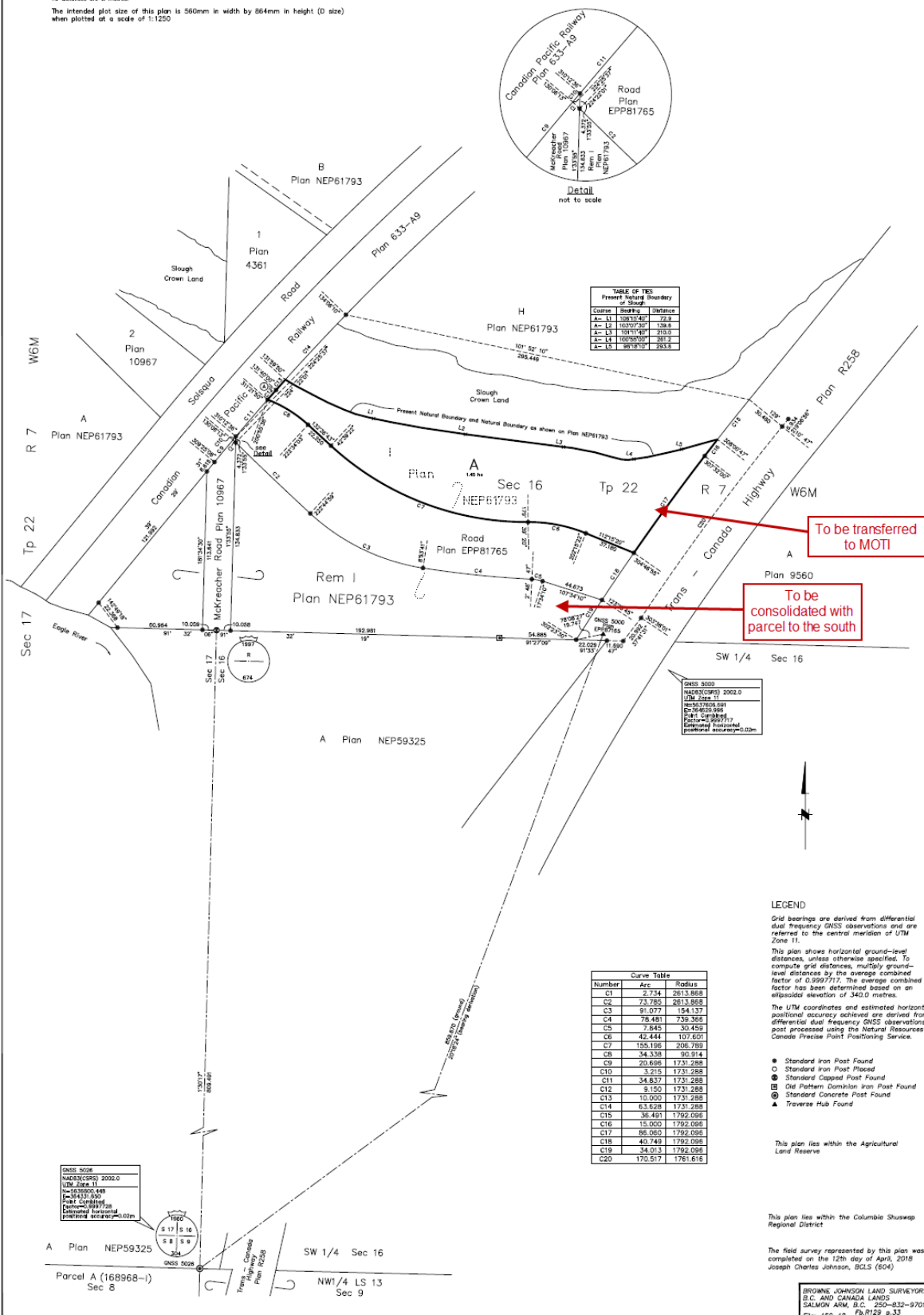


TABLE OF TIES
Present Natural Boundary
of Slough

Corner	Bearing	Distance
A-L1	103°10'42"	27.8
A-L2	103°07'30"	158.6
A-L3	103°01'30"	203.0
A-L4	103°00'00"	201.5
A-L5	99°18'10"	293.5

GNSS 5006
NAD83(CRS) 2002.0
UDA Zone 11
E=503500.448
N=54412.992
Point Coordinates
Datum: Canadian National
Datum: Geoidal
Horizontal Accuracy: ±0.02m

Curve Table

Number	Arc	Radius
C1	2.734	2613.868
C2	73.785	2613.868
C3	91.077	154.137
C4	78.481	733.385
C5	7.845	30.459
C6	42.444	107.601
C7	125.198	206.789
C8	34.338	90.914
C9	20.698	173.288
C10	3.215	173.288
C11	34.837	173.288
C12	9.150	173.288
C13	10.000	173.288
C14	63.628	173.288
C15	36.491	1792.096
C16	15.000	1792.096
C17	88.060	1792.096
C18	40.749	1792.096
C19	34.013	1792.096
C20	170.517	1761.616

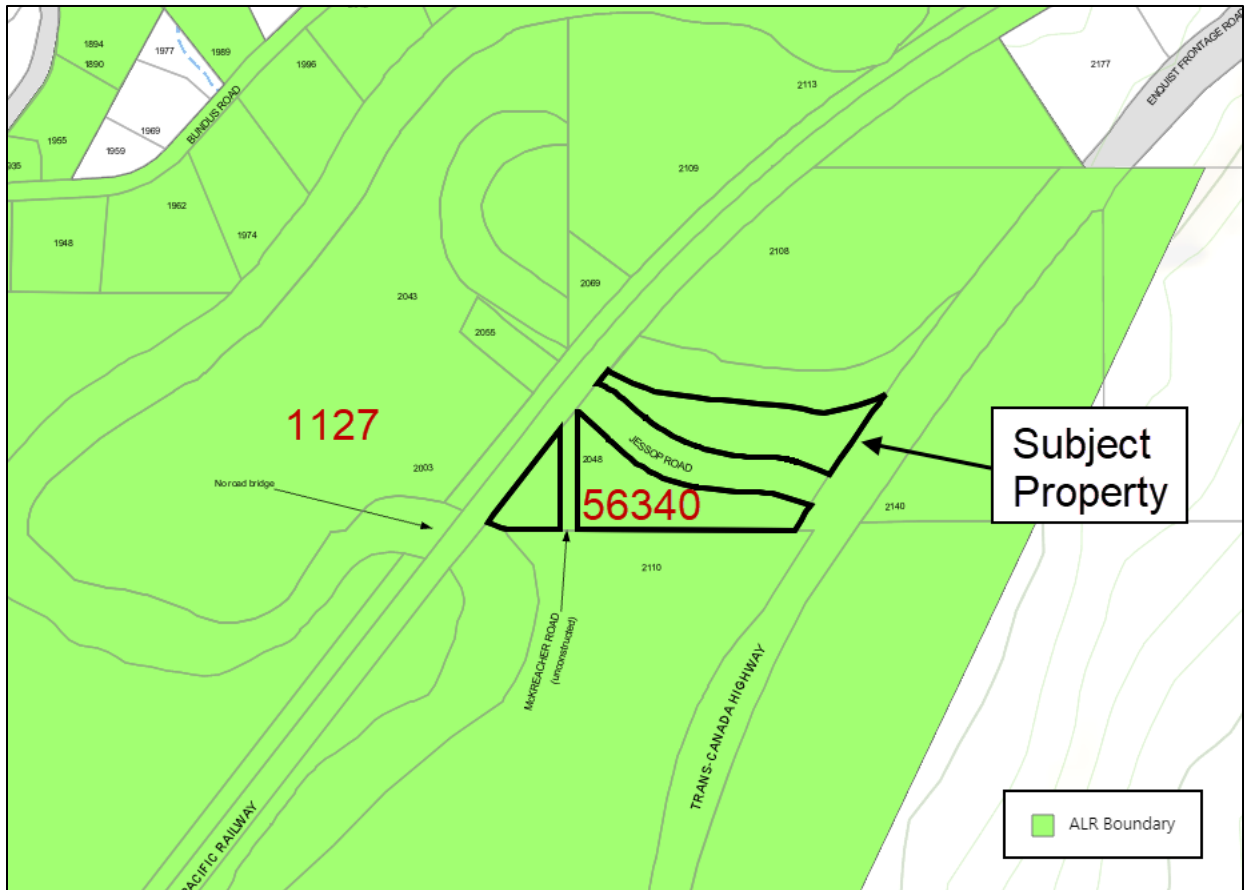
LEGEND
Grid bearings are derived from differential dual frequency GNSS observations and are referred to the central meridian of UTM Zone 11.
This plan shows horizontal ground-level distances, unless otherwise specified. To compute grid distances, multiply ground-level distances by the average combined factor of 0.9999711. The average combined factor has been determined based on an ellipsoidal elevation of 340.0 metres.
The UTM coordinates and estimated horizontal positional accuracy achieved are derived from differential dual frequency GNSS observations post processed using the Natural Resources Canada Precise Point Positioning Service.

- Standard Iron Post Found
- Standard Iron Post Placed
- Standard Capped Post Found
- Old Pattern Dominion Iron Post Found
- Standard Concrete Post Found
- ▲ Traverse Hub Found

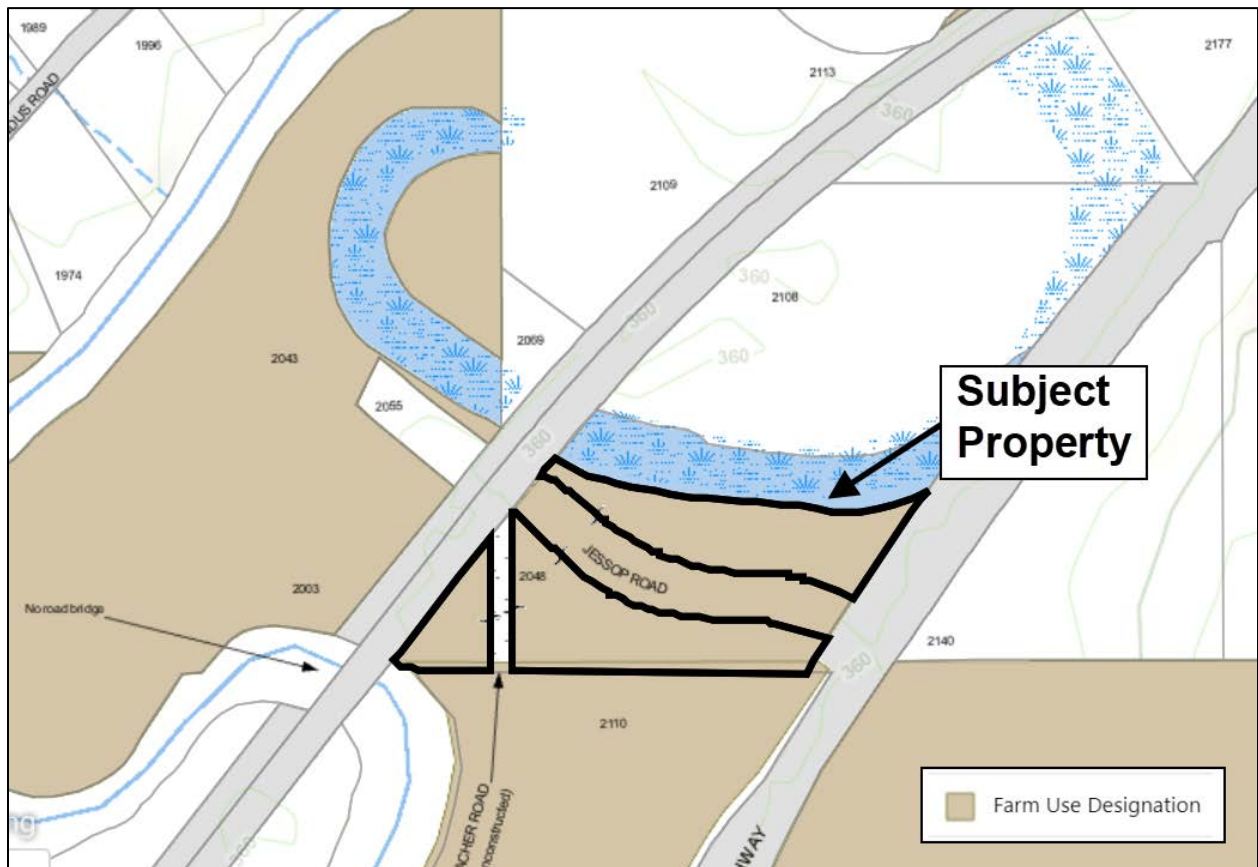
This plan lies within the Agricultural Land Reserve
This plan lies within the Columbia Shuswap Regional District
The field survey represented by this plan was completed on the 12th day of April, 2018
Joseph Charles Johnson, BCLS (804)

BROWNE JOHNSON LAND SURVEYORS
B.C. AND CANADA LANDS
SALMON ARM, B.C. 250-832-9701
Fax: 250-833-9133
File: 150-18 542-18.rdw

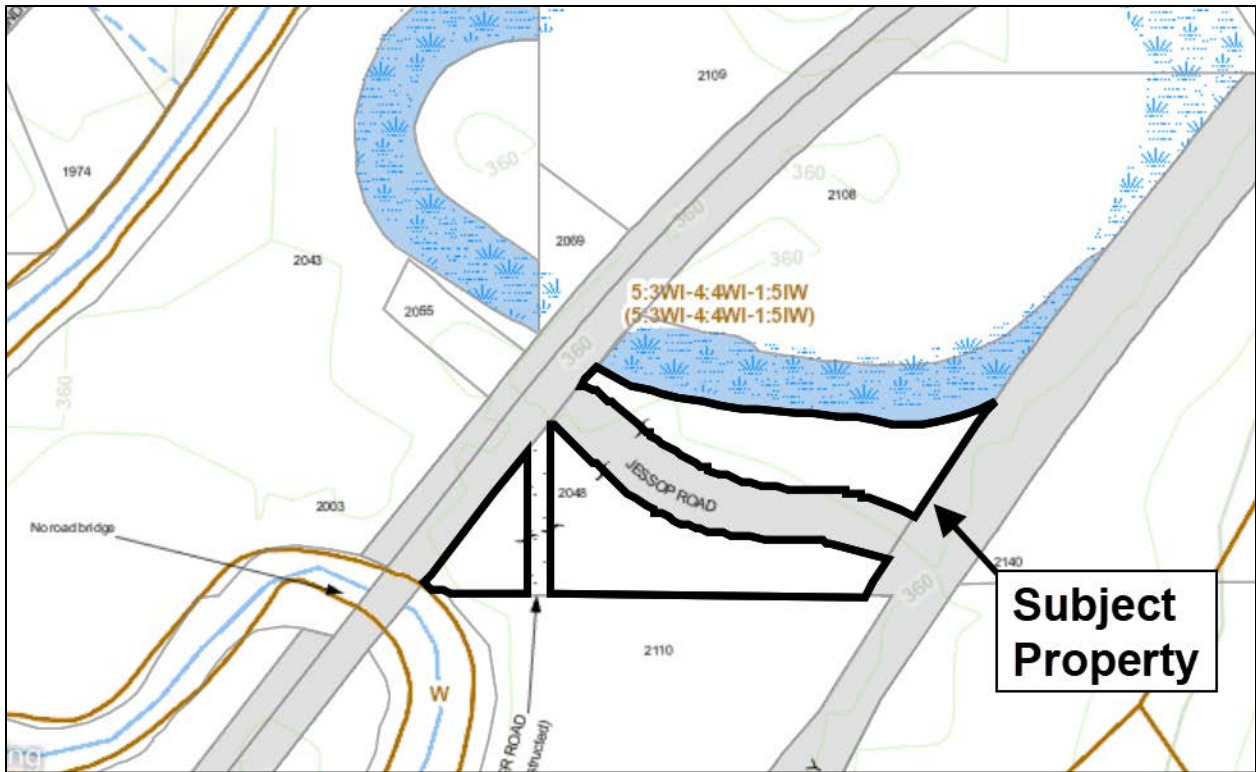
ALR/History



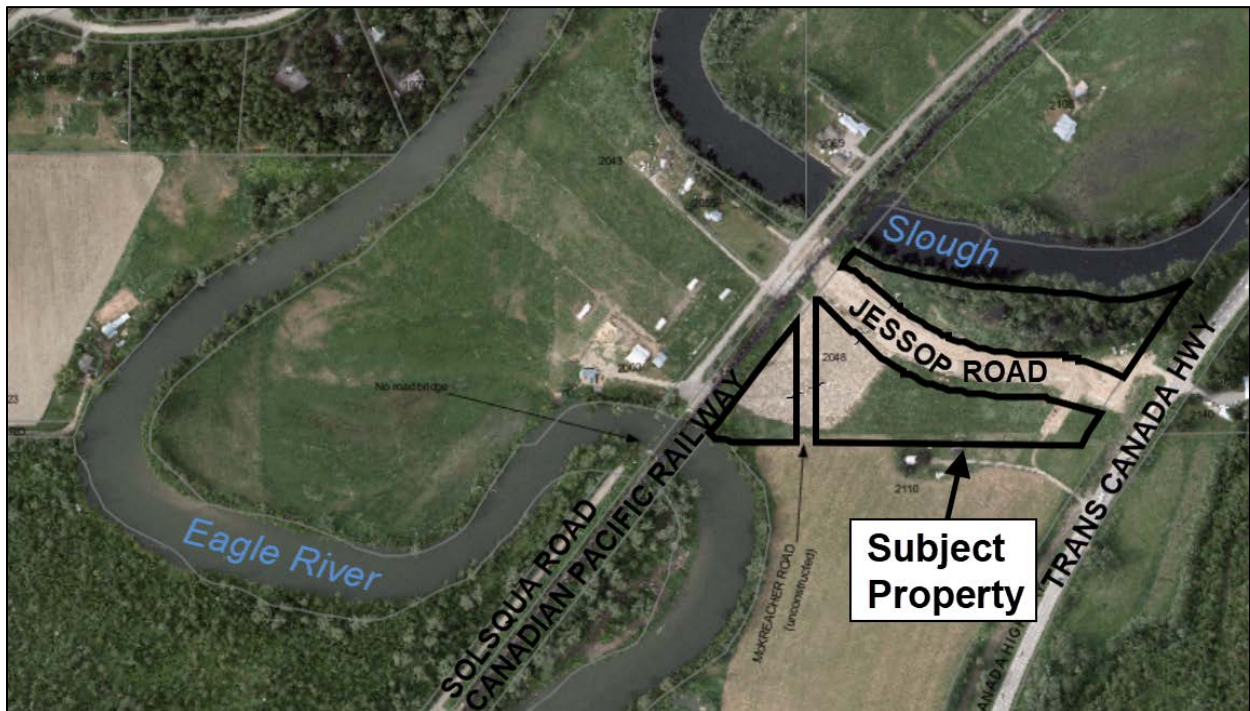
BC Assessment Farm Status/Designation



Soils



Orthophoto (2018)



Slopes

