



**Interior Lumber
Manufacturers'
Association**

Access to the Land Base

CSRD Board Meeting

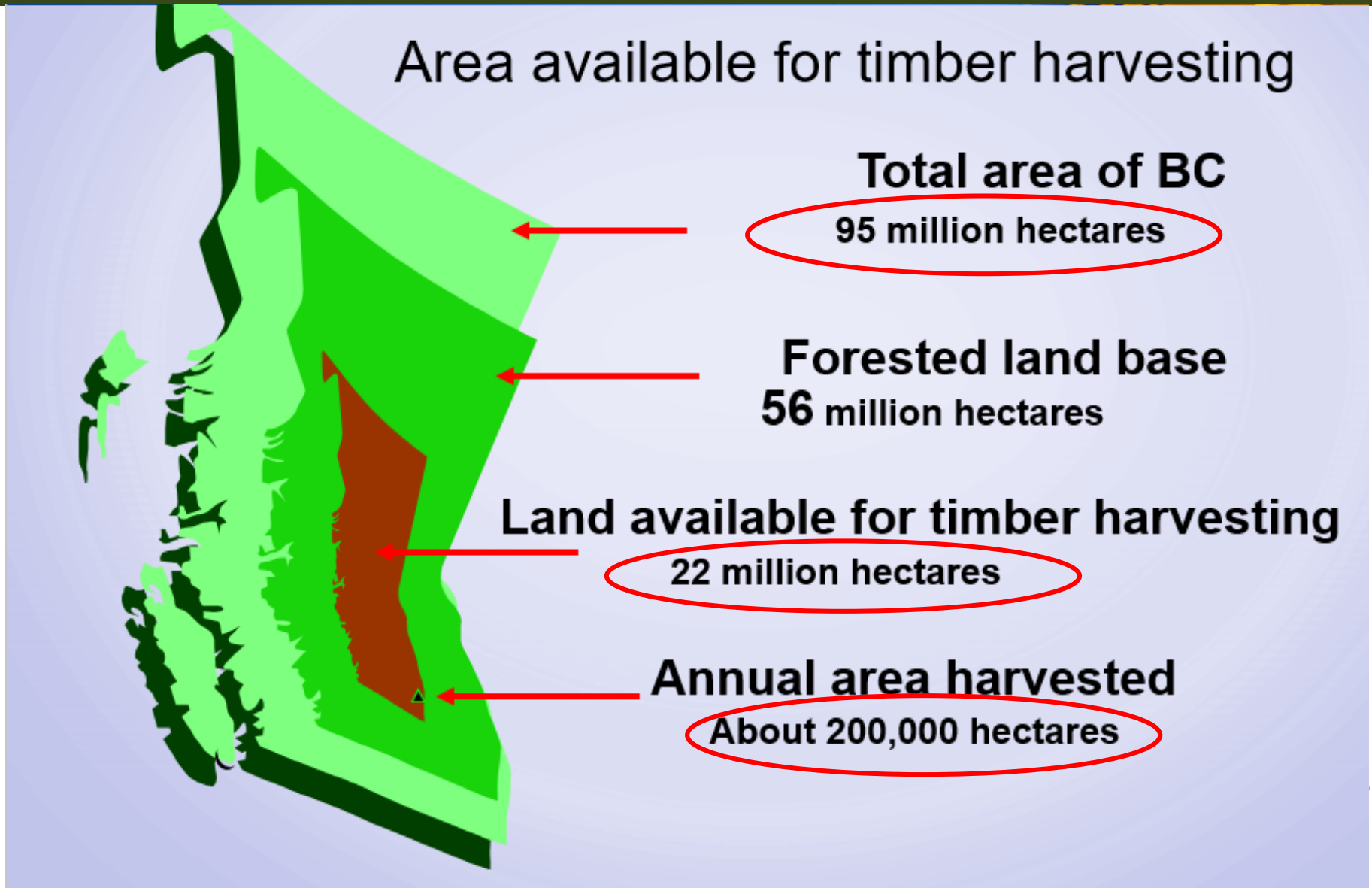
Salmon Arm, BC

Jan 10, 2019



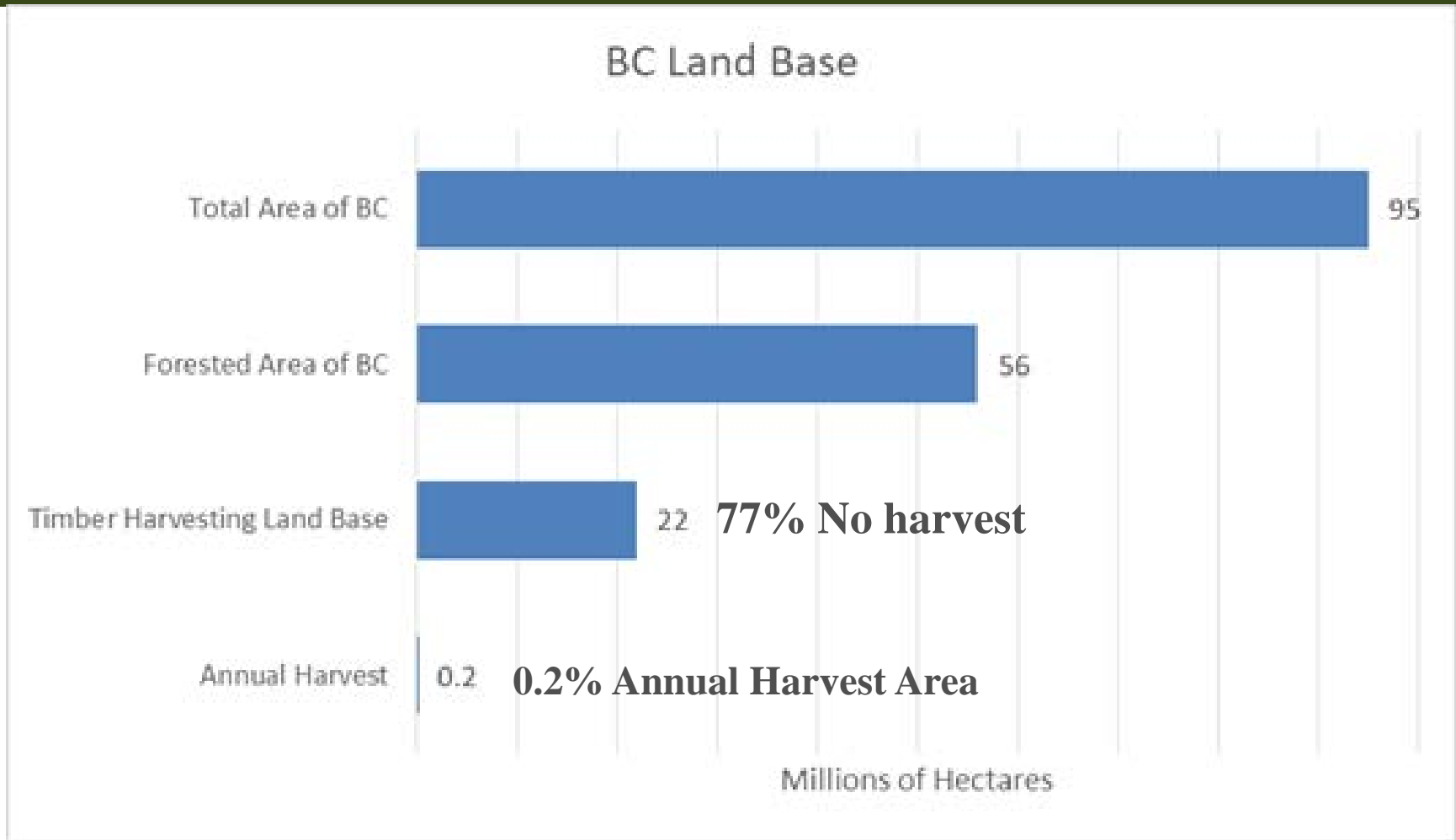
Timber Harvesting Land Base ... A Provincial Perspective

2



Timber Harvesting Land Base ... A Provincial Perspective

3



Interior Lumber
Manufacturers'
Association

Timber Harvesting Land Base

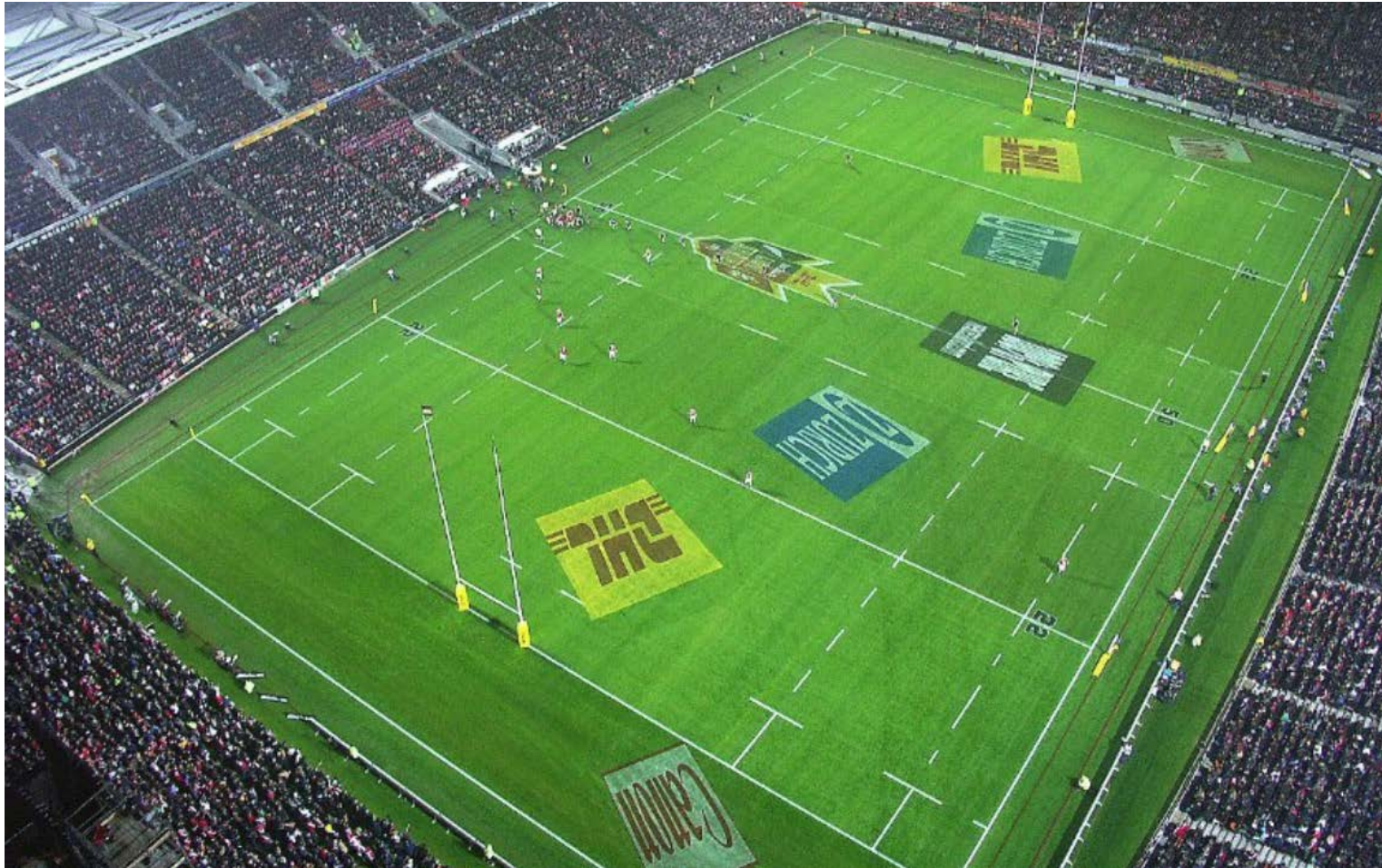
. . . A Provincial Perspective

- About 30 percent of BC is protected from harvest (Parks, Conservancies, Ecological Reserves, OGMAs etc.).
 - Totalling about 30 million hectares!
 - As big or bigger than Poland, Italy or New Zealand
- About 50 percent of BC has some leave of harvest restriction beyond that defined under the Forest Practices Act (including Community Watershed, Ungulate Winter Range, Visuals etc.).
 - Totalling about 48 million hectares!
 - Roughly the same size as Spain or Sweden



... For Some Perspective . . . What's a Hectare?

5



1 ha.?

100mx100m

**1 Rugby
Field**

**1/4 section of
land is 64ha**



**Interior Lumber
Manufacturers'
Association**

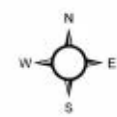
MANAGEMENT UNIT MAP TREE FARM LICENCE (TFL), TIMBER SUPPLY AREA (TSA), REGIONS AND DISTRICTS LOCATION MAP

Updated January, 2014

TREE FARM LICENCES

1. Coast Timber Resources Limited Partnership
2. International Forest Products Ltd.
3. Western Forest Products Inc.
4. International Forest Products Limited
5. Tembec Industries Ltd.
6. Canadian Forest Products Ltd.
7. Western Forest Products Inc.
8. International Forest Products Ltd.
9. Western Forest Products Inc.
10. The Corporation of the District of Mission
11. Canadian Forest Products Ltd.
12. Canoe Forest Products Limited
13. West Fraser Timber Ltd.
14. Western Forest Products Inc.
15. Northwest Squamish Forestry Limited Partnership
16. Western Forest Products Inc.
17. Sevenside Sawmills Ltd.
18. Kruger Products Limited Partnership
19. Western Forest Products Limited
20. International Forest Products Limited
21. Teak Cedar Products Ltd.
22. Teak Cedar Products Ltd.
23. Teak Cedar Products Ltd.
24. Teak Cedar Products Ltd.
25. Teak Cedar Products Ltd.
26. Teak Cedar Products Ltd.
27. Teak Cedar Products Ltd.
28. Teak Cedar Products Ltd.
29. Teak Cedar Products Ltd.
30. Teak Cedar Products Ltd.
31. Teak Cedar Products Ltd.
32. Teak Cedar Products Ltd.
33. Teak Cedar Products Ltd.
34. Teak Cedar Products Ltd.
35. Teak Cedar Products Ltd.
36. Teak Cedar Products Ltd.
37. Teak Cedar Products Ltd.
38. Teak Cedar Products Ltd.
39. Teak Cedar Products Ltd.
40. Teak Cedar Products Ltd.
41. Teak Cedar Products Ltd.
42. Teak Cedar Products Ltd.
43. Teak Cedar Products Ltd.
44. Teak Cedar Products Ltd.
45. Teak Cedar Products Ltd.
46. Teak Cedar Products Ltd.
47. Teak Cedar Products Ltd.
48. Teak Cedar Products Ltd.
49. Teak Cedar Products Ltd.
50. Teak Cedar Products Ltd.
51. Teak Cedar Products Ltd.
52. Teak Cedar Products Ltd.
53. Teak Cedar Products Ltd.
54. Teak Cedar Products Ltd.
55. Teak Cedar Products Ltd.
56. Teak Cedar Products Ltd.
57. Teak Cedar Products Ltd.
58. Teak Cedar Products Ltd.
59. Teak Cedar Products Ltd.
60. Teak Cedar Products Ltd.
61. Teak Cedar Products Ltd.

This map is for use only as a guide to the general location of the Tree Farm Licences.
 For more detailed information, contact Ministry of Forests, Lands and Natural Resource Operations.
 Forest Tenure Branch at 1 (800) 367-8888.



Regions and Districts

- Skeena Region**
 - Skeena Valley District
 - Robson District
 - North Coast District
 - Skeena District
- Northwest Region**
 - Port Nelson District
 - Peace District
- Omineca Region**
 - Port St. James District
 - Macmillan District
 - Prince George District
 - Vanderhoof District
 - Heathcote District
- Cariboo Region**
 - 100 Mile House District
 - Quesnel District
 - Central Cariboo District
 - Chilwien District
- West Coast Region**
 - South Island District
 - North Island - Central Coast District
 - Campbell River District
 - Walla Walla District
- South Coast Region**
 - Strathcona District
 - Squamish District
 - Chilliwack District
- Thompson/Okanagan Region**
 - Carleton Place District
 - Kamloops District
 - Okanagan - Shuswap District
 - West Kelowna District
- Kootenay/Boundary Region**
 - Rocky Mountain District
 - Kootenay Lake District
 - Colombia District
 - Arrow Boundary District

☆ Forests, Lands & Resource Ops. Regional Office
 — Coastal/Interior Appraisal Line
 — F.L.N.R.O. Area Boundaries
 — Districts
 — Timber Supply Areas
 — Cascade TSA
 — Pacific TSA
 — Parks & Protected Areas
 — Treaty Lands

0 20 40 60 80 100 120 140 160
Kilometers



Revelstoke TSA

7

Revelstoke TSA

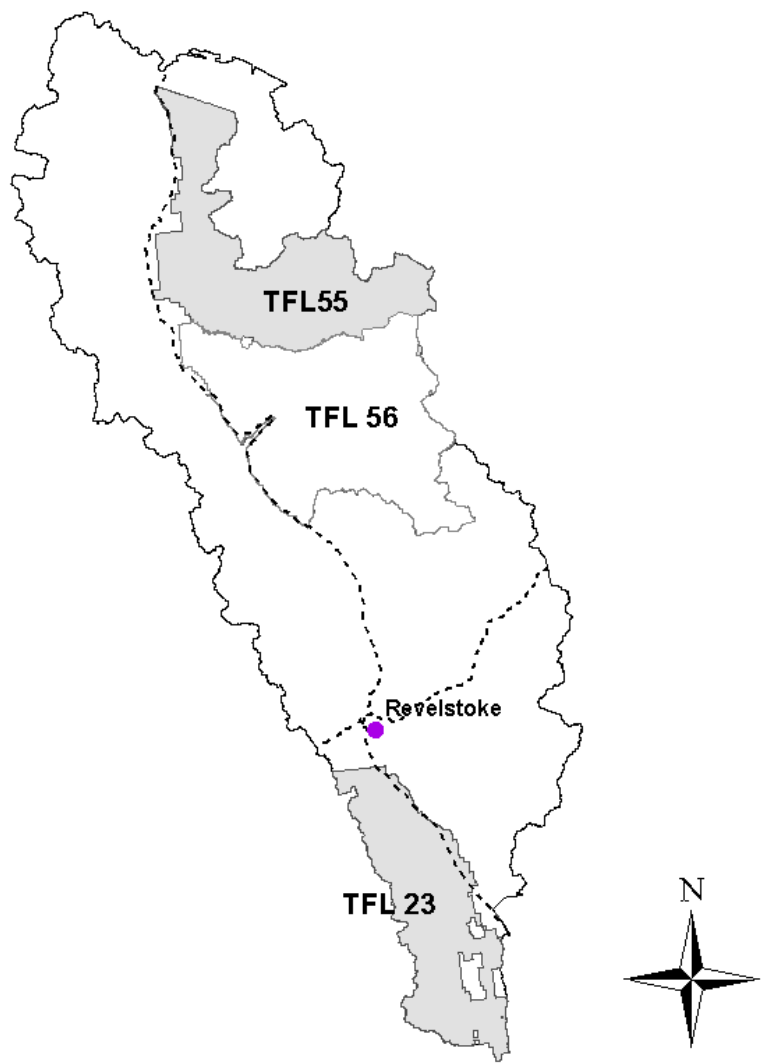
(60 km x 200 km)

Gross Area: 833,445 ha

Less: TFL 55 and TFL 23

Remaining Area: 669,263 ha

Supporting an annual harvest of
Approx. 315,000m³



Interior Lumber
Manufacturers'
Association

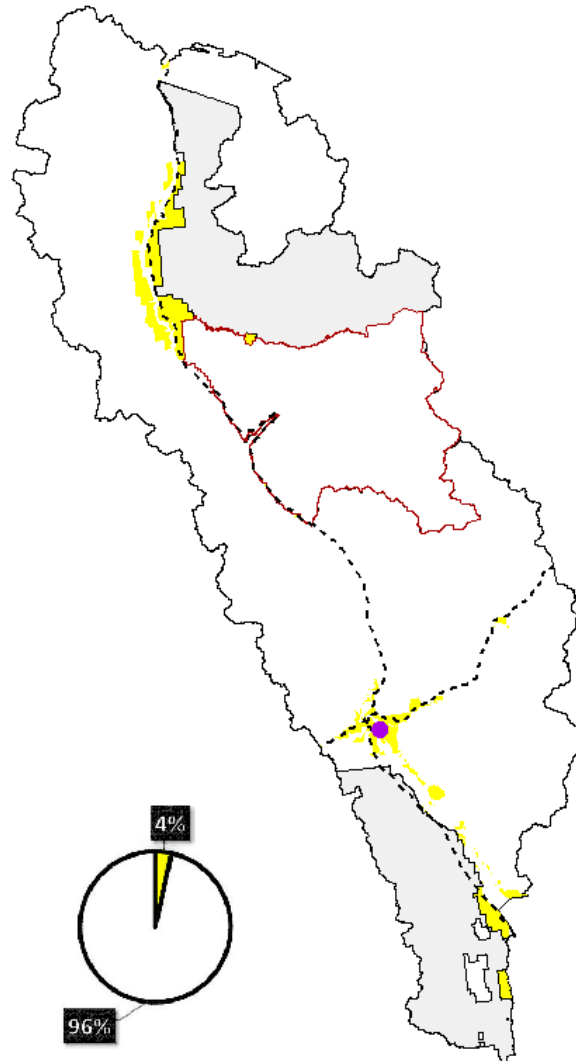
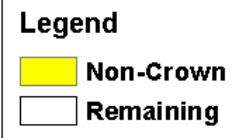
... Removing Non-Crown Land ...

Revelstoke TSA

Gross Area: 669,263 ha

Less: Non-Crown Land
(23,433 ha)

Remaining Area: 645,830 ha



Interior Lumber
Manufacturers'
Association

... Removing Non-Productive/Non-Forest

Revelstoke TSA

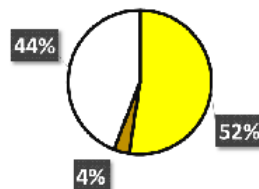
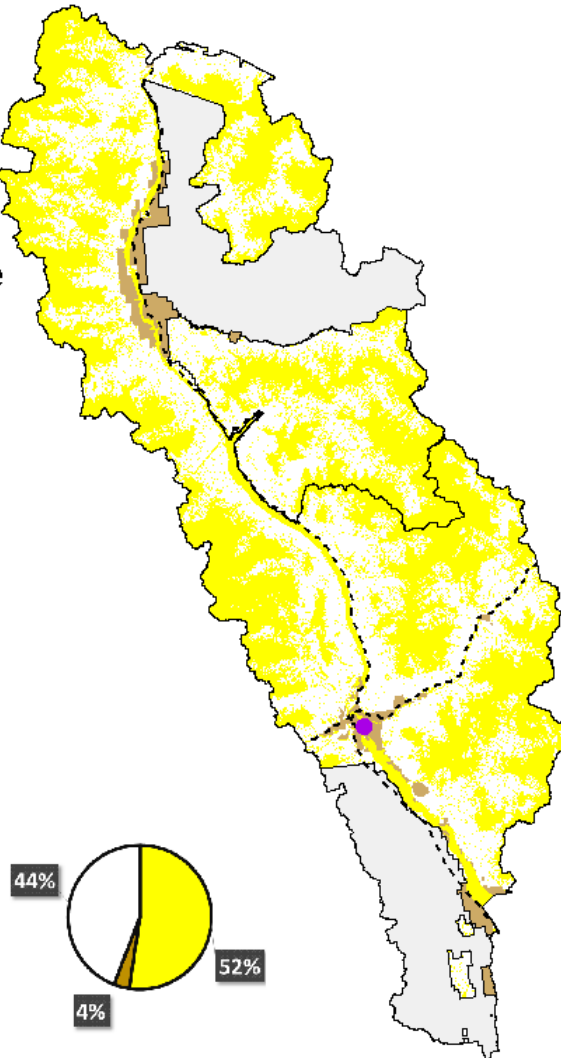
Gross Area: 669,263 ha

Less: Non-forest / Non-productive
(350,481 ha)

Remaining Area: 295,350 ha

Legend

- Non-forest / Non-productive
- Previous Removals
- Remaining



Interior Lumber
Manufacturers'
Association

Revelstoke TSA

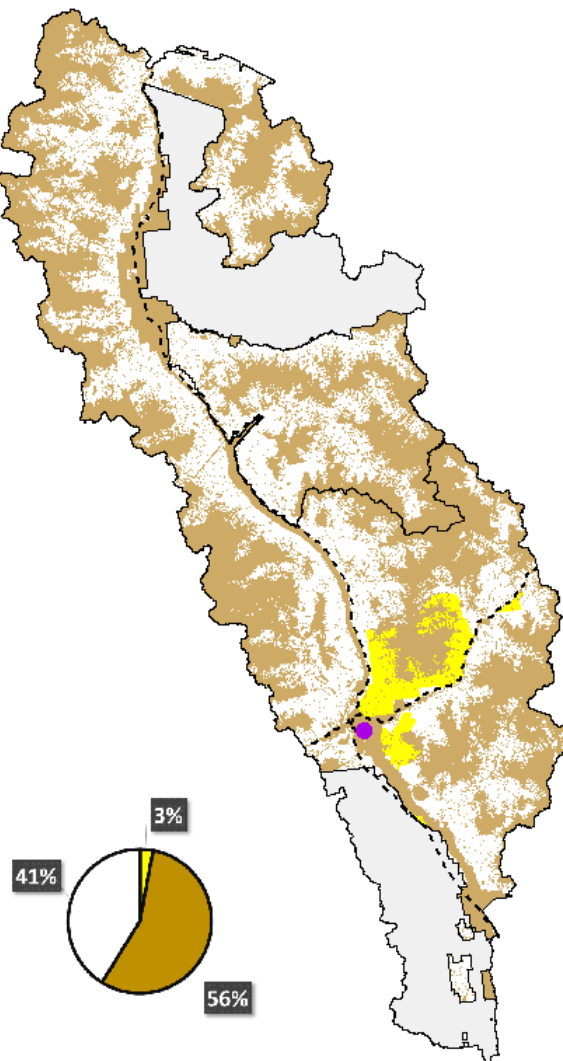
Gross Area: 669,263 ha

**Less: Parks & Protected Areas
(19,945 ha)**

Remaining Area: 275,405 ha

Legend

-  Parks & Protected Areas
-  Previous Removals
-  Remaining



Interior Lumber
Manufacturers'
Association

Revelstoke TSA

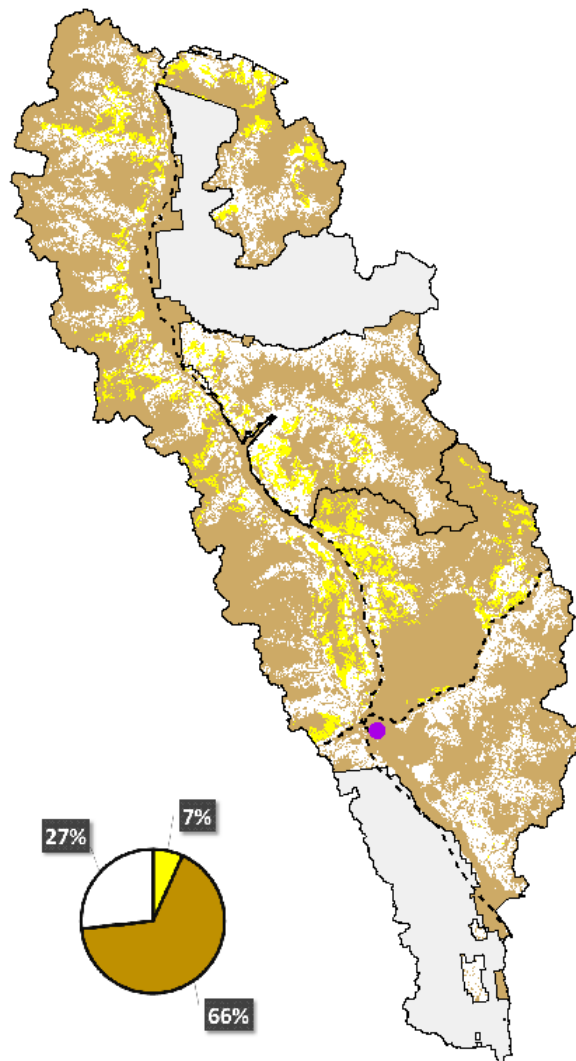
Gross Area: 669,263 ha

**Less: Areas reserved for Wildlife
(45,381 ha)**

Remaining Area: 178,233 ha

Legend

- Wildlife Management
- Previous Removals
- Remaining



Interior Lumber
Manufacturers'
Association

Revelstoke TSA

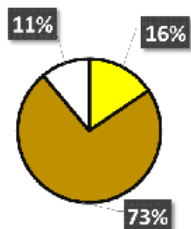
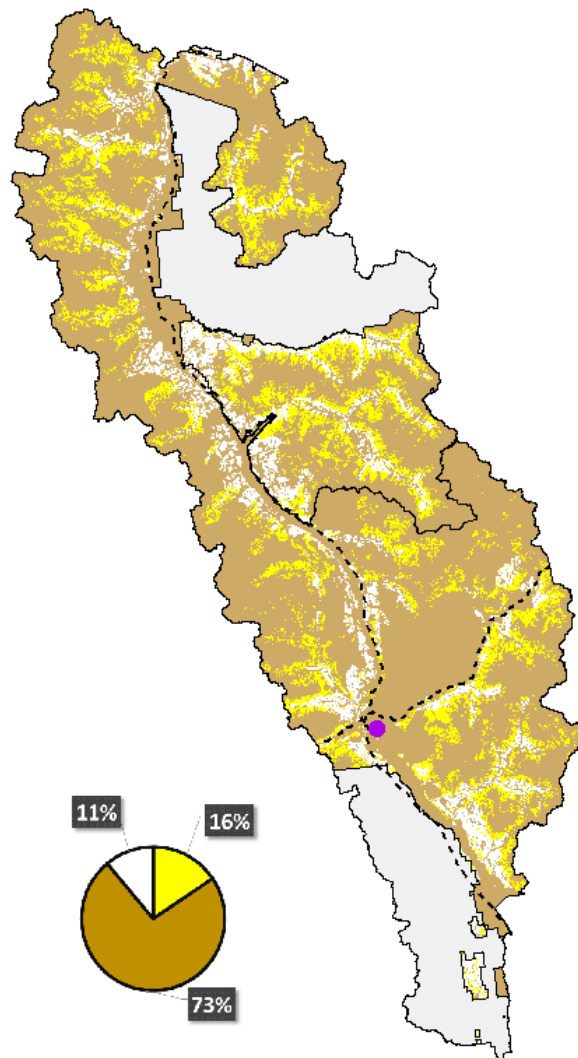
Gross Area: 669,263 ha

Less: Inoperable forest
(104,060 ha)

Remaining Area: 74,173 ha

Legend

- Inoperable forest
- Previous Removals
- Remaining THLB



Interior Lumber
Manufacturers'
Association




Revelstoke TSA

Gross Area: 669,263 ha

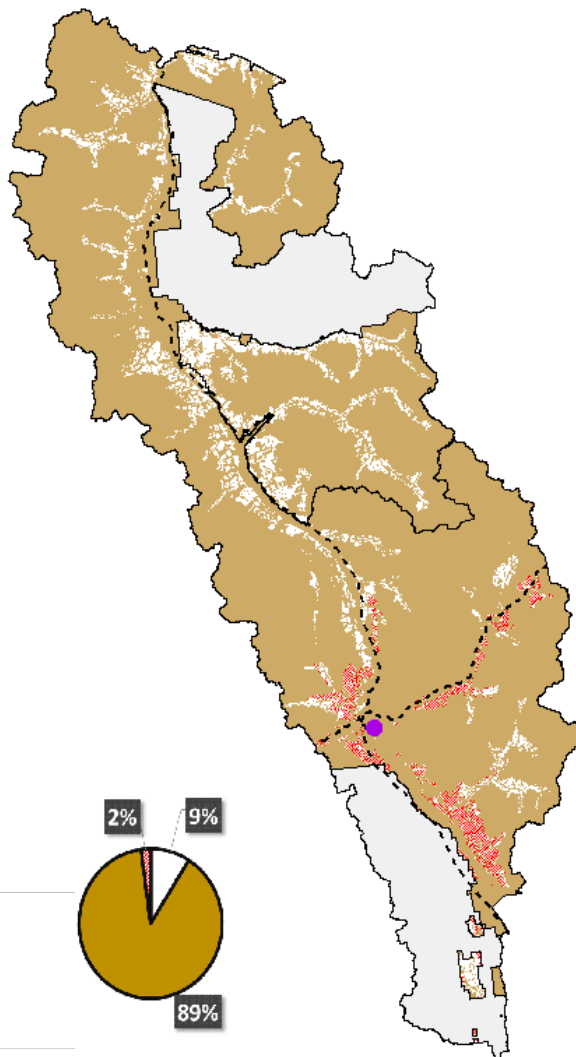
Less: CWS & VQO & UWR
Constrained Areas
(14,374 ha)

Remaining Area: 59,799 ha

Legend

-  CWS & VQO & UWR
-  Unconstrained THLB
-  Non-THLB

Total THLB 74,173ha
Further Constraints 14,374ha
Remaining THLB 59,799ha



Interior Lumber
Manufacturers'
Association

... Annual Operating Footprint ...

14

Revelstoke TSA

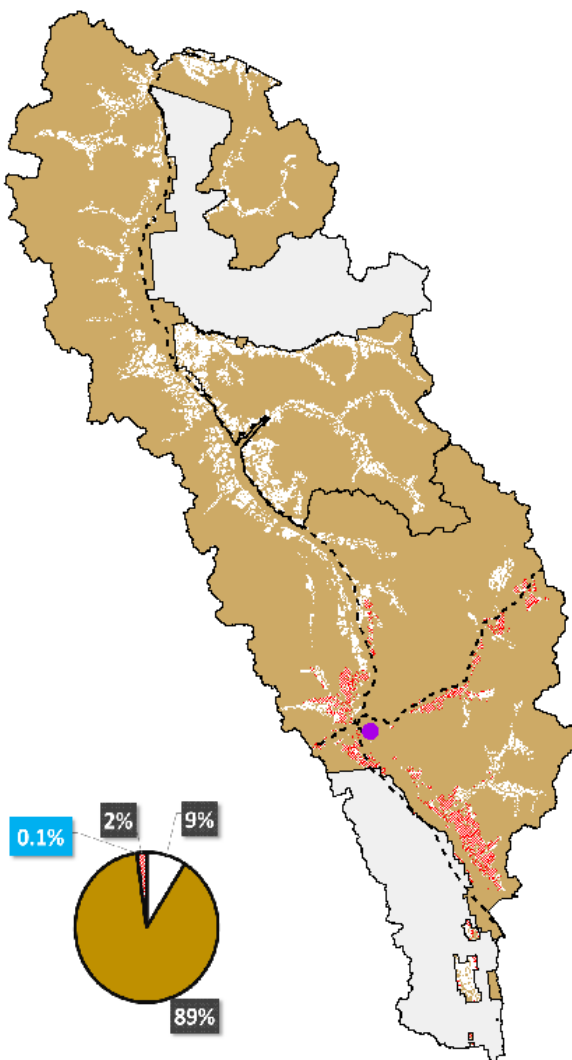
Gross Area: 669,263 ha

Annual Logged Area : 900 ha
(0.1% of the Gross Area)
(1.2% of the THLB)

Legend

- Annual Logged Area
- CWS & VQO & UWR
- Unconstrained THLB
- Non-THLB

Total THLB 74,173ha
Further Constraints 14,374ha
Remaining THLB 59,799ha



Interior Lumber
Manufacturers'
Association

... Further Potential Land Base Removal ...

15

Revelstoke TSA

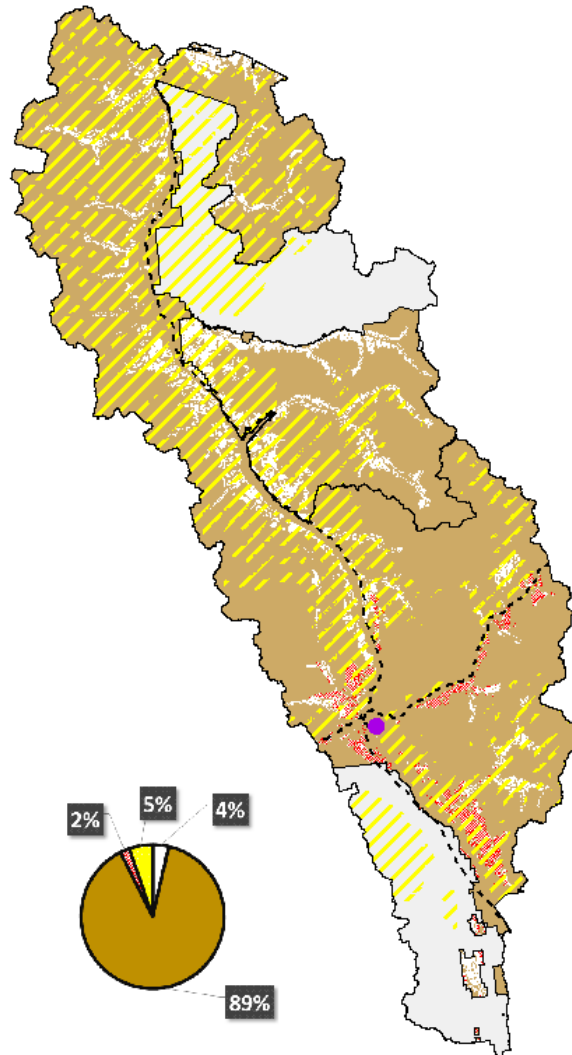
Gross Area: 669,263 ha

Less: Potential New Federal
Caribou Habitat
(35,370 ha)

Remaining Area: 24,429 ha

Legend

-  Potential New Federal Caribou Habitat
-  CWS & VQO & UWR
-  Unconstrained THLB
-  Non-THLB



Interior Lumber
Manufacturers'
Association

... Proposed NEW Critical Habitat for Caribou. . .

16



Interior Lumber
Manufacturers'
Association

Revelstoke TSA

Gross Area: 669,263 ha



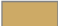
Total THLB 74,173ha

Further Constraints 14,374ha

Remaining THLB 59,799ha



Legend

-  CWS & VGO & UWR
-  THLB
-  Non-THLB



Interior Lumber
Manufacturers'
Association

- **This area supports about 315,000m³/year.**
 - **The 2017 wildfire season burned over 34Mm³ of THLB which is over 100 times the annual volume available in the Revelstoke area reported here.**
 - **We harvest 1/10 or one percent of the entire land base.**
- **The amount of land outside of the timber harvesting land base in this one TSA is 595,000ha. Larger than Wells Gray Provincial Park (542,000ha) or Glacier National Park (135,000ha) or Kootenay National Park (141,000ha.)**
- **There are total of 1,043 parks and protected areas in BC including the 7 national parks totalling 14.7 million hectares or 15% of all lands in the province.**
 - **Parks alone in BC are larger than the entire country of Nepal, Greece, Nicaragua or North Korea as examples.**
- **30 million hectares or 30% of the province that is restricted from harvest.**
- **47 million hectares were there is some level of harvest restriction.**
- **Annual harvest foot print in BC**
 - **0.2% or BC**
 - **0.4% of Forested Land**
 - **0.9% of the Timber Harvesting Land Base**



- **For every hectare of land that is removed from the timber harvesting land base there is a negative economical impact.**
- **Rural Communities are at the greatest risk. Once land is removed and economical activities stop, it won't come back.**
- **Stay informed on issues affecting the working forest and pay close attention to further withdrawals.**
- **Remember the businesses, your neighbor, your brother, your grandfather that have operating safely and sustainably in these forests for decades.**
- **There needs to be a viable working forest to continue to generate economic activities and services that we need in BC!**



Thank-you

Supporting the Working Forest is Critical
to sustain family supporting jobs, economic
prosperity and communities that depend on
this renewable resource.

www.ILMA.com or info@ilma.com

Dan Battistella—President

INTERIOR LUMBER MANUFACTURERS' ASSOCIATION

PO Box 3005, Kamloops, BC, V2C 6B7
250-319-4119 (c)



Interior Lumber
Manufacturers'
Association