

CANADIAN PACIFIC

**SOLSQUA - TRANS CANADA HIGHWAY
CROSSING ROAD RELOCATION**

**MOUNTAIN DIVISION
SHUSWAP SUBDIVISION**

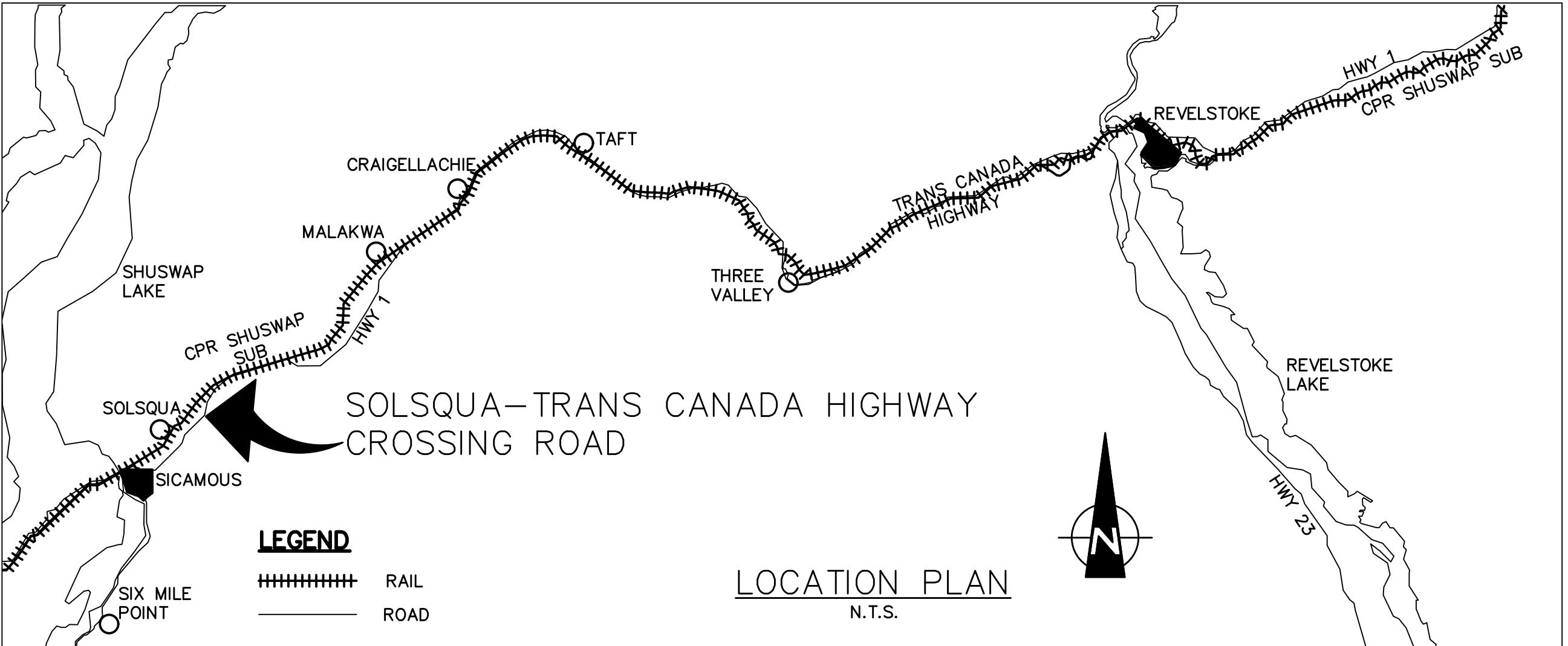
ISSUED FOR CONSTRUCTION - REVISED

MAY 7, 2018



HATCH

DRAWING LIST			
DRAWING NO.	DESCRIPTION	REVISION	DATE
35320-DWG-HIN-001	COVER PAGE	9	2018.05.07
35320-DWG-HIN-002	DRAWING LIST AND LEGEND	9	2018.05.07
35320-DWG-HIN-003	KEY PLAN	6	2018.04.27
35320-DWG-PP-101	LINK ROAD PLAN AND PROFILE STA. 0+000 TO STA. 0+120	6	2018.04.27
35320-DWG-PP-102	LINK ROAD PLAN AND PROFILE STA. 0+120 TO STA. 0+240	6	2018.05.07
35320-DWG-PP-103	LINK ROAD PLAN AND PROFILE STA. 0+240 TO STA. 0+376	5	2018.03.22
35320-DWG-PP-104	TRANS CANADA WIDENING PLAN AND PROFILE STA. 10+000 TO STA. 10+170	6	2018.03.22
35320-DWG-PP-105	TRANS CANADA WIDENING PLAN AND PROFILE STA. 10+170 TO STA. 10+340	5	2018.03.22
35320-DWG-PP-106	TRANS CANADA WIDENING PLAN AND PROFILE STA. 10+340 TO STA. 10+510	6	2018.04.27
35320-DWG-PP-107	TRANS CANADA WIDENING PLAN AND PROFILE STA. 10+510 TO STA. 10+685	6	2018.03.22
35320-DWG-PP-108	SOLSQUA ROAD PLAN AND PROFILE	7	2018.04.27
35320-DWG-PP-109	REVISION DRIVEWAY PLAN AND PROFILE	6	2018.03.22
35320-DWG-PM-201	LINK ROAD PAVEMENT MARKINGS AND SIGNAGE STA. 0+000 TO STA. 0+120	5	2018.05.07
35320-DWG-PM-202	LINK ROAD PAVEMENT MARKINGS AND SIGNAGE STA. 0+120 TO STA. 0+240	4	2018.02.28
35320-DWG-PM-203	LINK ROAD PAVEMENT MARKINGS AND SIGNAGE STA. 0+240 TO STA. 0+380	5	2018.02.28
35320-DWG-PM-204	TRANS CANADA WIDENING MARKINGS AND SIGNAGE STA. 10+000 TO STA. 10+170	5	2018.02.28
35320-DWG-PM-205	TRANS CANADA WIDENING MARKINGS AND SIGNAGE STA. 10+170 TO STA. 10+340	6	2018.02.28
35320-DWG-PM-206	TRANS CANADA WIDENING MARKINGS AND SIGNAGE STA. 10+340 TO STA. 10+510	5	2018.02.28
35320-DWG-PM-207	TRANS CANADA WIDENING MARKINGS AND SIGNAGE STA. 10+510 TO STA. 10+685	4	2018.02.28
35320-DWG-PM-208	SOLSQUA ROAD PAVEMENT MARKINGS AND SIGNAGE	7	2018.05.07
35320-DWG-CR-301	RAILWAY CROSSING PLAN	4	2018.02.28
35320-DWG-DT-302	TRANS CANADA INTERSECTION DETAILS	4	2018.02.28
35320-DWG-DT-303	SOLSQUA ROAD INTERSECTION DETAILS	3	2018.04.27
35320-DWG-DT-304	LINK DRIVEWAY INTERSECTION DETAILS	2	2018.02.28
35320-DWG-TS-401	TYPICAL CROSS SECTIONS	7	2018.03.22
35320-DWG-TS-402	TYPICAL CROSS SECTIONS	6	2018.03.22
35320-DWG-TS-403	TYPICAL CROSS SECTIONS	5	2018.04.27
35320-DWG-RM-501	TRANS CANADA HIGHWAY REMOVAL PLAN STA. 10+000 TO STA. 10+360	5	2018.04.27
35320-DWG-RM-502	TRANS CANADA HIGHWAY REMOVAL PLAN STA. 10+360 TO STA. 10+685	3	2018.02.28
35320-DWG-RM-503	SOLSQUA ROAD REMOVAL PLAN	4	2018.04.27
35320-DWG-RM-504	EXISTING LINK ROAD REMOVAL PLAN	3	2018.02.28
35320-DWG-XS-601	CROSS SECTIONS - LINK ROAD	5	2018.04.27
35320-DWG-XS-602	CROSS SECTIONS - LINK ROAD	4	2018.03.22
35320-DWG-XS-603	CROSS SECTIONS - LINK ROAD	4	2018.03.22
35320-DWG-XS-604	CROSS SECTIONS - LINK ROAD	4	2018.03.22
35320-DWG-XS-605	CROSS SECTIONS - LINK ROAD	4	2018.03.22
35320-DWG-XS-606	CROSS SECTIONS - TRANS CANADA	4	2018.03.22
35320-DWG-XS-607	CROSS SECTIONS - TRANS CANADA	4	2018.03.22
35320-DWG-XS-608	CROSS SECTIONS - TRANS CANADA	4	2018.03.22
35320-DWG-XS-609	CROSS SECTIONS - TRANS CANADA	4	2018.03.22
35320-DWG-XS-610	CROSS SECTIONS - TRANS CANADA	4	2018.03.22
35320-DWG-XS-611	CROSS SECTIONS - TRANS CANADA	5	2018.04.27
35320-DWG-XS-612	CROSS SECTIONS - TRANS CANADA	4	2018.03.22
35320-DWG-XS-613	CROSS SECTIONS - TRANS CANADA	4	2018.03.22
35320-DWG-XS-614	CROSS SECTIONS - SOLSQUA ROAD	5	2018.04.27
35320-DWG-XS-615	CROSS SECTIONS - SOLSQUA ROAD	5	2018.04.27
35320-DWG-XS-616	CROSS SECTIONS - SOLSQUA ROAD	5	2018.04.27
35320-DWG-XS-617	CROSS SECTIONS - DRIVEWAY	4	2018.03.22
35320-DWG-XS-618	CROSS SECTIONS - DRIVEWAY	4	2018.03.22
TE-13031	ELECTRICAL DESIGN	3	2017.12.08



- GENERAL NOTES
1. ALL UNITS ARE METRIC (METRES) UNLESS NOTED OTHERWISE.
 2. ALL PROPERTY LINES ARE PROVIDED FOR INFORMATION ONLY.
 3. SHOULD THE CONTRACTOR FIND ANY DISCREPANCIES ON THE DRAWINGS, OR IN THE FIELD PRIOR TO BEGINNING WORK OR DURING CONSTRUCTION, THEY SHALL IMMEDIATELY NOTIFY THE ENGINEER.
 4. ALL CONSTRUCTION MATERIALS AND METHODS TO BE IN ACCORDANCE WITH BRITISH COLUMBIA 2016 STANDARD SPECIFICATIONS FOR HIGHWAY CONSTRUCTION.
 5. NO WORK WILL BE DONE WITHIN THE CP RIGHT-OF-WAY WITHOUT PRIOR APPROVAL FROM CP.
 6. ALL CONSTRUCTION WITHIN THE CP RIGHT-OF-WAY SHALL MEET CURRENT CP STANDARD SPECIFICATIONS.
 7. THE CONTRACTOR IS RESPONSIBLE FOR LOCATING AND VERIFYING ALL UNDERGROUND UTILITIES PRIOR TO CONSTRUCTION.
 8. THE CONTRACTOR SHALL TAKE NECESSARY PRECAUTIONS TO PREVENT DAMAGE TO EXISTING UTILITIES AND TREES.
 9. THE CONTRACTOR IS REQUIRED TO MEET ALL APPLICABLE FEDERAL, PROVINCIAL, AND LOCAL REGULATIONS CONCERNING PROJECT SAFETY & ASSUME FULL RESPONSIBILITY FOR SAFETY ON THE PROJECT.
 10. CROSSING PLANKS TO BE INSTALLED BY OTHERS.

LEGEND	
	EXISTING RIGHT OF WAY
	EXISTING CP RAIL TRACKS
	CP RAIL TRACKS
	EXISTING LANE EDGE
	LANE EDGE
	EXISTING SHOULDER EDGE
	SHOULDER
	BOTTOM OF DITCH
	FENCE
	ROAD CENTRE LINE
	LIMIT OF GRADING (BOF/TOC)
	BOTTOM OF FILL
	TOP OF CUT
	RIGHT OF WAY
	ONE POST ROAD SIGN
	TWO POST ROAD SIGN
	EXISTING POWER POLE
	PROPOSED POWER POLE
	INFORMATION DIRECTIONAL ARROWS
	PAINTED DIRECTIONAL ARROWS
	ASPHALT PAVEMENT - NEW CONSTRUCTION
	MILL AND INLAY 50mm
	GRAVEL SURFACE - NEW CONSTRUCTION
	REMOVE EXISTING PAVEMENT

PROFESSIONAL SEALS

HATCH

METRIC
DIMENSIONS ARE IN METRES AND/OR MILLIMETRES
UNLESS OTHERWISE NOTED

DESIGNED BY: GP	DRAWN BY: AW
DATE: 2018.05.07	DATE: 2018.05.07
CHECKED BY: ST	PROJECT MANAGER: JP
DATE: 2018.05.07	DATE: 2018.05.07

HATCH PROJECT No:
352320

DWG SCALE(22X34):

This document should not be relied on or used in circumstances other than those for which it was originally prepared and for which Hatch Corporation was commissioned. Hatch Corporation accepts no responsibility for this document to any party other than the person by whom it was commissioned.



9	2018.05.07	ISSUED FOR CONSTRUCTION - REVISED	GP
8	2018.04.27	ISSUED FOR CONSTRUCTION - REVISED	GP
7	2018.03.22	ISSUED FOR CONSTRUCTION - REVISED	GP
6	2018.02.28	ISSUED FOR CONSTRUCTION - REVISED	GP
5	2018.01.26	ISSUED FOR CONSTRUCTION - REVISED	GP
4	2017.12.08	ISSUED FOR CONSTRUCTION - REVISED	GP
3	2017.11.24	ISSUED FOR CONSTRUCTION - REVISED	GP
2	2017.11.06	ISSUED FOR CONSTRUCTION - REVISED	GP
1	2017.10.16	ISSUED FOR CONSTRUCTION	GP
0	2017.07.26	ISSUED FOR TENDER	K.M.M.
No.	DATE	REVISION	BY

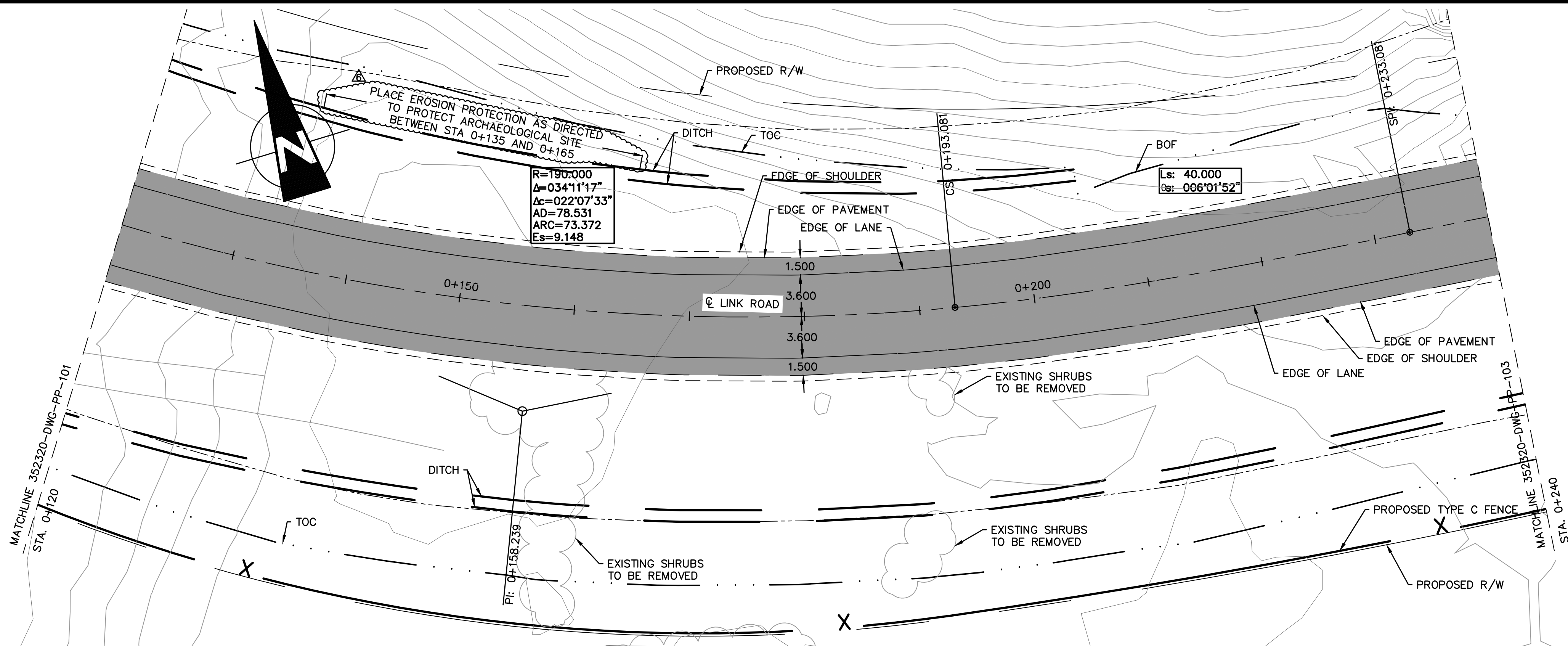
CP
PROJECT SERVICES - CALGARY
ENGINEERING SERVICES

MOUNTAIN DIVISION SHUSWAP SUB.

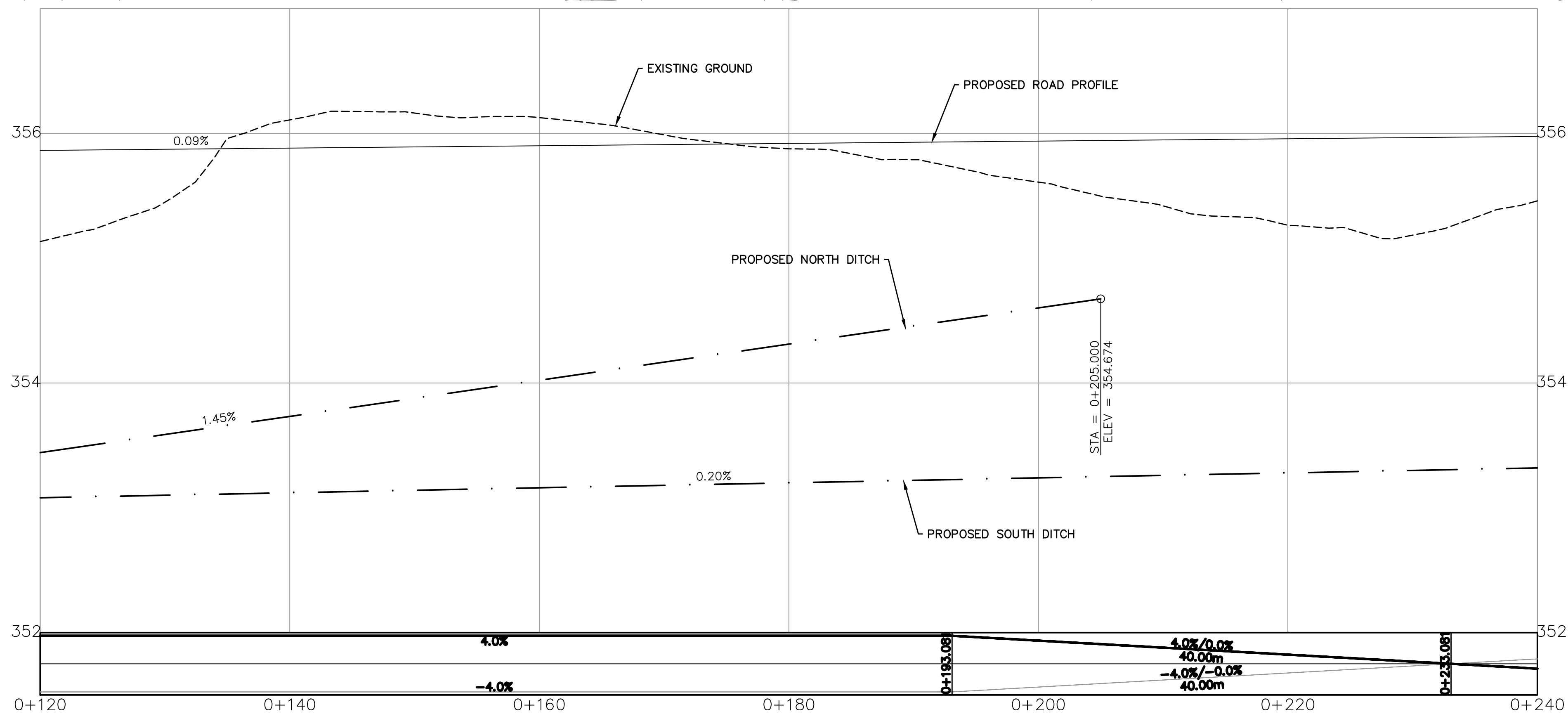
**SOLSQUA CROSSING ROAD
DRAWING LIST & LEGEND**

DWG. BY:	CHK BY:	OFFICE FILE:
ENGINEER:	SCALE:	DATE:
L. PEREIRA MANAGER PROJECTS	PLAN No. 352320-DWG-HIN-002	Rev. 9

May 07, 2018, 3:29pm
Login Name: P001877145
Drawing Name: C:\pwworking\hatch\p001877145\352320-DWG-PP-101-103_0.dwg

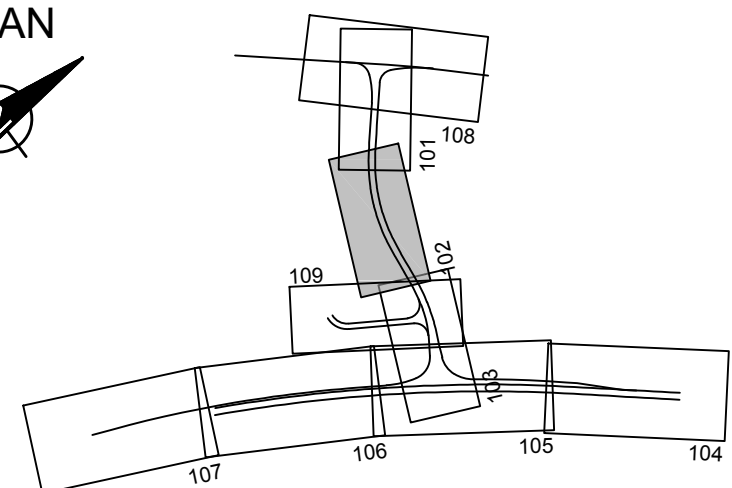


LINK ROAD
DESIGN SPEED 60 km/h



HORIZONTAL SCALE: 1:250
VERTICAL SCALE: 1:25

KEY PLAN
NTS



HATCH

METRIC
DIMENSIONS ARE IN METRES AND/OR MILLIMETRES
UNLESS OTHERWISE NOTED

DESIGNED BY: GP
DATE: 2018.05.07
CHECKED BY: ST
DATE: 2018.05.07
HATCH PROJECT No: 352320
DRAWN BY: AW
DATE: 2018.05.07
PROJECT MANAGER: JP
DATE: 2018.05.07
DWG SCALE(22X34): 1:250

PROFESSIONAL SEALS



This document should not be relied on or used in circumstances other than those for which it was originally prepared and for which Hatch Corporation was commissioned. Hatch Corporation accepts no responsibility for this document to any party other than the person by whom it was commissioned.

No.	DATE	REVISION	BY
6	2018.05.07	ISSUED FOR CONSTRUCTION - REVISED	GP
5	2018.03.22	ISSUED FOR CONSTRUCTION - REVISED	GP
4	2018.02.28	ISSUED FOR CONSTRUCTION - REVISED	GP
3	2017.12.08	ISSUED FOR CONSTRUCTION - REVISED	GP
2	2017.11.06	ISSUED FOR CONSTRUCTION - REVISED	GP
1	2017.10.16	ISSUED FOR CONSTRUCTION	GP
0	2017.07.26	ISSUED FOR TENDER	K.M.M.

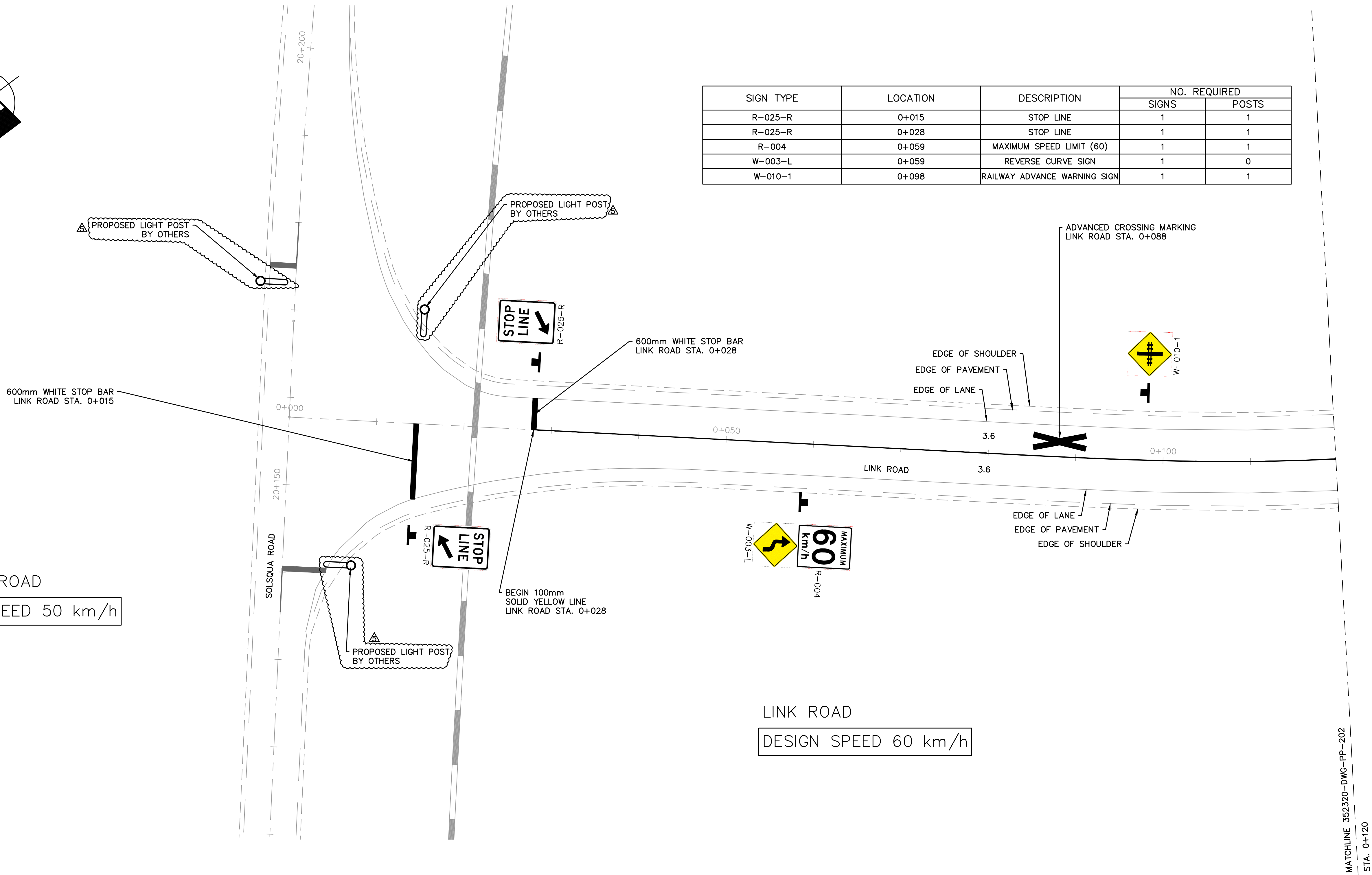
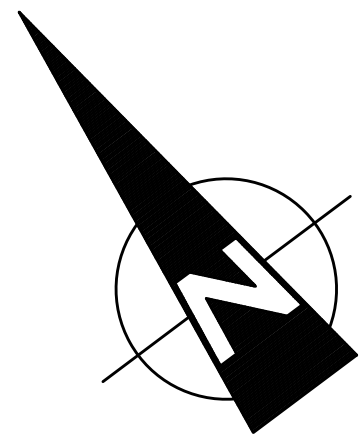
CP
PROJECT SERVICES - CALGARY
ENGINEERING SERVICES

MOUNTAIN DIVISION SHUSWAP SUB.

SOLSQUA CROSSING ROAD
LINK ROAD PLAN & PROFILE
STA. 0+120 TO STA. 0+240

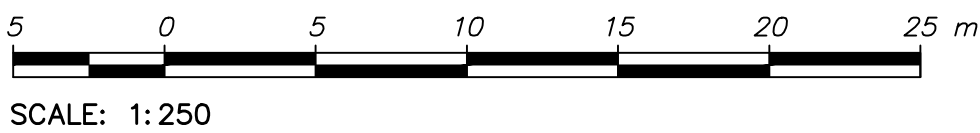
DWG. BY:	CHK BY:	OFFICE FILE:
ENGINEER:	SCALE:	DATE:
L. PEREIRA MANAGER PROJECTS	PLAN No. 352320-DWG-PP-102	Rev. 6

May 07, 2018, 3:29pm
Login Name: P001877145
Drawing Name: C:\pwworking\h\p001877145\dms65678\352320-DWG-PM-201-203_0.dwg

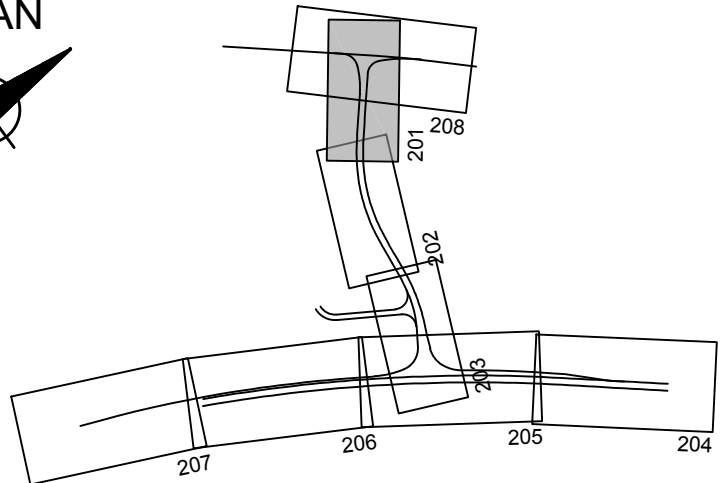


SIGN TYPE	LOCATION	DESCRIPTION	NO. REQUIRED	
			SIGNS	POSTS
R-025-R	0+015	STOP LINE	1	1
R-025-R	0+028	STOP LINE	1	1
R-004	0+059	MAXIMUM SPEED LIMIT (60)	1	1
W-003-L	0+059	REVERSE CURVE SIGN	1	0
W-010-1	0+098	RAILWAY ADVANCE WARNING SIGN	1	1

- NOTE:
1. ALL SIGNS AND PAVEMENT MARKINGS MUST CONFORM TO DETAILS LAID OUT IN BC MANUAL OF STANDARD TRAFFIC SIGNS AND PAVEMENT MARKINGS EXCEPT WHERE NOTED.
 2. POSTS ARE TO BE GALVANIZED STEEL TELESAR.



KEY PLAN
NTS



HATCH

METRIC
DIMENSIONS ARE IN METRES AND/OR MILLIMETRES
UNLESS OTHERWISE NOTED

DESIGNED BY: GP	DRAWN BY: AW
DATE: 2018.05.07	DATE: 2018.05.07
CHECKED BY: ST	PROJECT MANAGER: JP
DATE: 2018.05.07	DATE: 2018.05.07

HATCH PROJECT No: 352320	DWG SCALE(22X34): 1:250
-----------------------------	----------------------------

PROFESSIONAL SEALS



This document should not be relied on or used in circumstances other than those for which it was originally prepared and for which Hatch Corporation was commissioned. Hatch Corporation accepts no responsibility for this document to any party other than the person by whom it was commissioned.

No.	DATE	REVISION	BY
5	2018.05.07	ISSUED FOR CONSTRUCTION - REVISED	GP
4	2018.02.28	ISSUED FOR CONSTRUCTION - REVISED	GP
3	2017.12.08	ISSUED FOR CONSTRUCTION - REVISED	GP
2	2017.11.06	ISSUED FOR CONSTRUCTION - REVISED	GP
1	2017.10.16	ISSUED FOR CONSTRUCTION	GP
0	2017.07.26	ISSUED FOR TENDER	K.M.M.

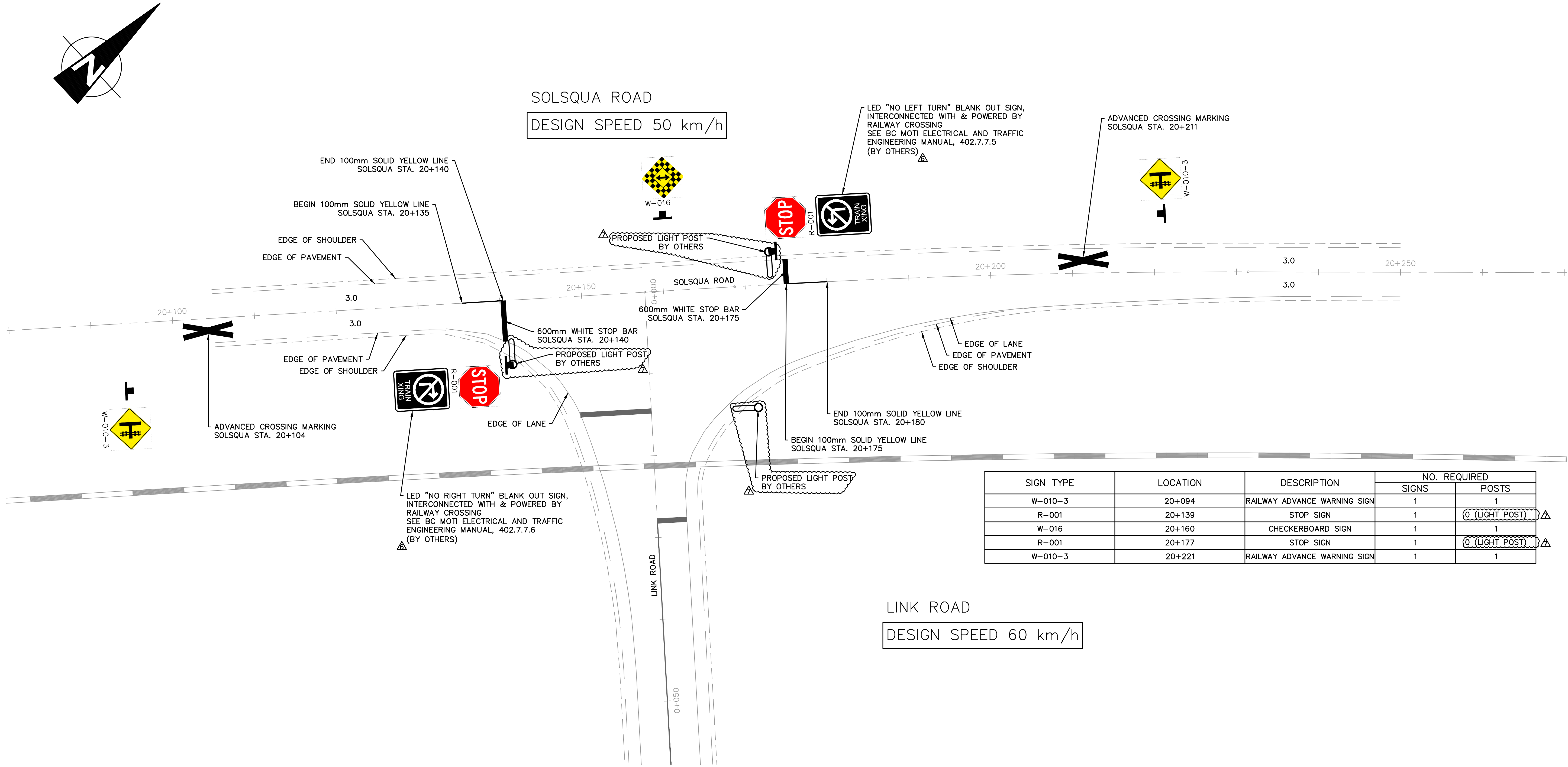
CP
PROJECT SERVICES - CALGARY
ENGINEERING SERVICES

MOUNTAIN DIVISION SHUSWAP SUB.

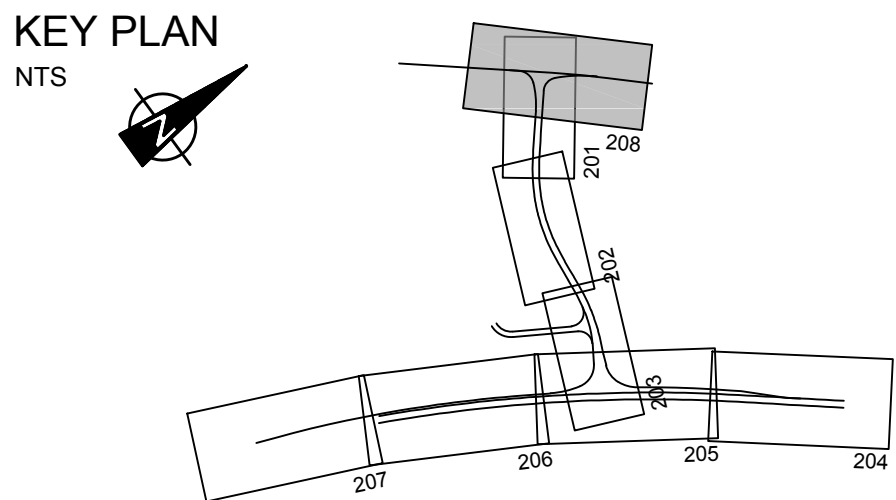
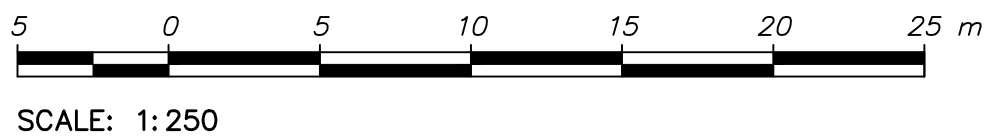
**SOLSQUA CROSSING ROAD
LINK ROAD PAVEMENT MARKINGS AND SIGNAGE
STA. 0+000 TO STA. 0+120**

DWG. BY:	CHK BY:	OFFICE FILE:
ENGINEER:	SCALE:	DATE:
L. PEREIRA MANAGER PROJECTS	PLAN No. 352320-DWG-PM-201	Rev. 5

May 07, 2018, 3:29pm
Login name: P001877145
Drawing Name: C:\pwworking\hatch\p001877145\352320-DWG-PM-208.Dwg



NOTE:
1. ALL SIGNS AND PAVEMENT MARKINGS MUST CONFORM TO DETAILS LAID OUT IN BC MANUAL OF STANDARD TRAFFIC SIGNS AND PAVEMENT MARKINGS EXCEPT WHERE NOTED.
2. POSTS ARE TO BE GALVANIZED STEEL TELESAR.



HATCH

METRIC
DIMENSIONS ARE IN METRES AND/OR MILLIMETRES
UNLESS OTHERWISE NOTED

DESIGNED BY: GP
DATE: 2018.05.07
CHECKED BY: ST
DATE: 2018.05.07
HATCH PROJECT No: 352320
DWG SCALE(22X34): 1:250

DRAWN BY: AW
DATE: 2018.05.07
PROJECT MANAGER: JP
DATE: 2018.05.07

PROFESSIONAL SEALS



This document should not be relied on or used in circumstances other than those for which it was originally prepared and for which Hatch Corporation was commissioned. Hatch Corporation accepts no responsibility for this document to any party other than the person by whom it was commissioned.

No.	DATE	REVISION	BY
7	2018.05.07	ISSUED FOR CONSTRUCTION - REVISED	GP
6	2018.04.27	ISSUED FOR CONSTRUCTION - REVISED	GP
5	2018.02.28	ISSUED FOR CONSTRUCTION - REVISED	GP
4	2018.01.26	ISSUED FOR CONSTRUCTION - REVISED	GP
3	2017.12.08	ISSUED FOR CONSTRUCTION - REVISED	GP
2	2017.11.06	ISSUED FOR CONSTRUCTION - REVISED	GP
1	2017.10.16	ISSUED FOR CONSTRUCTION	GP
0	2017.07.26	ISSUED FOR TENDER	K.M.M.

CP
PROJECT SERVICES - CALGARY
ENGINEERING SERVICES

MOUNTAIN DIVISION SHUSWAP SUB.

**SOLSQUA CROSSING ROAD
SOLSQUA ROAD PAVEMENT MARKINGS AND SIGNAGE
STA. 0+080 TO STA. 0+270**

DWG. BY:	CHK BY:	OFFICE FILE:
ENGINEER:	SCALE:	DATE:
L. PEREIRA MANAGER PROJECTS	PLAN No. 352320-DWG-PM-208	Rev. 7