



**REVELSTOKE**  
BACKCOUNTRY GUIDES

Winter Backcountry Recreation Tenure Management Plan  
June 2 2017

Mike Bromberg  
President, Revelstoke Backcountry Guides Inc

<b>Introduction to Project and Purpose</b>	<b>3</b>
<b>1.0 Seasonal Activities in Proposed Tenure Area:</b>	<b>4</b>
<b>2.0 Location</b>	<b>6</b>
<b>3.0 Infrastructure and Improvements</b>	<b>8</b>
<b>4.0 Environmental</b>	<b>13</b>
<b>5.0 Socio-Community</b>	<b>17</b>
<b>Appendix</b>	<b>20</b>

## **Introduction to Project and Purpose**

Revelstoke Backcountry Guides Inc (RBG) wishes to showcase the unique terrain of the Revelstoke area by offering guided backcountry ski touring and splitboarding programs that encourage connection to the local mountains.

By applying for a Winter Non-Motorized tenure, we look forward to the opportunity to offer an unparalleled backcountry experience to our guests.

Company history: Revelstoke Backcountry Guides Inc, established in 2016, is owned and operated by Mike Bromberg of Revelstoke, BC and a small team of local ACMG guides. RBG's focus is on human powered mountain adventures year round.

RBG's winter trips based in Revelstoke using the lift system through an agreement with Revelstoke Mountain Resort and a business license to operate within Glacier National Park through Parks Canada as well as a rock climbing/mountaineering adventure tourism tenure.

As an internationally certified IFMGA/UIAGM Mountain Guide, Mike has guided rock climbing, mountaineering and backcountry skiing throughout the Western United States and Canada as well as throughout Western Europe. Mike has worked as a supervising guide and trainer for high end adventure tourism companies as well as operating a small private guiding business since 2008 specializing in custom created trips, courses and climbs in various mountain tourism destinations worldwide.

The area where RBG is requesting a license of occupation is perfectly suited to ski touring due to it's accessible moderate Treeline and Alpine terrain and it's very close proximity to Revelstoke ideally suited for both single and multi-day hut based trips. Although three very established Helicopter Ski Guiding businesses operate in and around the Revelstoke area, none of these businesses are focused on non-mechanized backcountry ski touring. Each of these companies does offer helicopter touring on an extremely limited basis and is very clearly not the core focus of their businesses. As such, RBG is seeking a license of occupation in an area that is currently not being utilized for helicopter skiing nor is it a regularly frequented area by general public users.

## **1.0 Seasonal Activities in Proposed Tenure Area:**

Activity Description: Non-Motorized Recreation (Winter)

### **1.1.1 One Day Backcountry Touring**

Initially, RBG's focus will be exclusively on one-day human powered backcountry skiing and snowboard touring. The emphasis of our program is quality of snow and mountain experience over quantity of runs or vertical meters skied.

RBG proposes to use the helicopter only as an access tool for day trips and will strive to minimize any mechanized usage by using human powered egress when conditions are safe and appropriate.

The concept is for small groups of skiers to be transported to the tenured area enabling them to explore terrain which would be difficult or impossible to access without the aid of a helicopter on a one day program. After the initial "access flight" groups would spend the entirety of their day using skins to access the ski runs before a final descent.

Our single-day helicopter assisted backcountry skiing programs will be offered in conjunction with our existing town based backcountry skiing options such as at Roger Pass in glacier national park.

### **1.1.2 Multi-day Hut Based Backcountry Touring**

A longer term goal of RBG's is to establish a hut within the tenured area that can be utilized as a resource for both overnight and single day tours. The focus of our hut product is to offer shorter duration trips of 2-4 nights in length as opposed to the 6-7 day packages that are common throughout the region.

Our aim is for the egress of guided groups is human powered (without the use of helicopter transport) a feature truly uncommon for backcountry experiences in British Columbia.

Our existing clientele has indicated that this is absolutely an opportunity that they can support and fits with our brand of thoughtful, connection centric experiences.

### **1.1.3 Operation Size**

Our aim is to provide private low ratio guided backcountry experiences for up to 10 guests total split into groups of no more than 5 guests per guide.

RBG has had great success using this model in current operations and plans to use the extensive use area efficiently by having both single day and shorter duration multi-day programs once fully operational.

All commercial visitors are to be directly supervised by guides (ie no “self guided” skiing) at all times and will operate at low ratios uncommon in guided backcountry ski lodge venues to ensure the highest level of client care, customer service and minimization of impact to other users and the environment.

#### 1.1.4 Proposed Tenure Size

RBG is proposing an extensive use area of approximately 40 square Km’s ranging in elevation from 2471m at it’s highest, down to approximately 570m at it’s lowest point. The terrain is a mix of Alpine, sub-alpine and below treeline forested terrain appropriate for modern backcountry ski touring.

The proposed tenure is sized appropriately for ski touring and does not occupy much terrain that is not ideally suited for ski touring.

#### 1.2 Investigative Work

Site Exploration: Mike Bromberg and guides of RBG have explored the proposed area and suitability for the activities as well as assessed appropriateness for terrain and hazard mitigation for such activities.

The site is clearly an opportunity to support a guiding business despite the extremely small scale of the tenured area as contrasted with the large areas granted to pure “gravity fed” mechanized ski operations.

Additionally, the opportunity to exit the site without helicopter usage is very unique and attractive to ski guests as it not only reduces environmental footprint, but also adds time spent in the terrain as opposed to long and occasionally logistically complex transfer days.

#### 1.3 Confirmation of Safety Plan

Revelstoke Backcountry Guides confirms that our operation will be equipped with an appropriate Avalanche Safety Plan, Risk Management Plan and Emergency Response Plan as refined from the existing business model.

Additionally, as applicant, guide and director of Revelstoke Backcountry Guides, Mike Bromberg’s resume highlights include:

- International Federation of Mountain Guide Associations (IFMGA/UIAGM) Certified Mountain Guide (American Mountain Guides Association AMGA, 2010)
- Association of Canadian Mountain Guides (ACMG) Mountain Guide Member
- American Mountain Guides Association (AMGA) Instructor Team Member. responsible for training and examining guides in rock climbing, alpine climbing and backcountry skiing disciplines.

All guides will abide by the [ACMG's Scope of Practice Guidelines](#) as they relate to terrain and supervision in technical terrain.

RBG operates under a company commercial liability insurance (\$5,000,000 coverage) policy appropriate for all guided activities.

## **2.0 Location**

### **2.1 Description**

With the growing popularity of backcountry touring, it has become increasingly difficult to provide a service of untracked and uncrowded skiing in the Revelstoke backcountry area. Backcountry guiding from a Revelstoke base often involves potentially hazardous drives on the Trans-Canada highway to Rogers Pass. Though there are a multitude of backcountry lodges in the area, they are routinely booked solidly three years in advance with a limited very limited capacity and most require week long commitments.

Though the mechanized skiing opportunities are numerous, our existing clientele is interested in an experience that showcases the natural world as opposed to the mechanized components of a snowcat or a helicopter as their primary focus.

The the centre of our proposed “Twin Butte” extensive use area is located approximately 14 km's East of Revelstoke.

### **2.2 Location Justification**

RBG is seeking a tenure in a relatively accessible yet remote feeling location in order to minimize impact on recreational users by visiting places with extremely low probability of conflict with unguided public.

Each zone has been carefully selected as places where recreational users do not regularly travel. Additionally, each site has been chosen to due to it's proximity to Revelstoke to minimize fuel consumption for any required helicopter access to reduce overall environmental impact.

#### **2.2.1 Nearby Operations**

##### **Helicopter Ski Operations**

Revelstoke is surrounded by three of the most well established and well respected helicopter ski companies in the industry. The vast majority of the skiable terrain that lies outside of a national park in this area is reserved as helicopter skiing tenure.

To illustrate, Canadian Mountain Holidays' Revelstoke advertised tenure is comprised of approximately 1,597 square Km's.

Selkirk-Tangiers' advertised tenure is approximately 2,000 square km's. Eagle Pass

Heli-Skiing's tenure is approximately 1,570 square km's.

RBG is seeking non overlapping tenure of 40 square Km's for it's “extensive use area.”

### Nearest Neighbours

Selkirk-Tangiers Helicopter Skiing is the nearest neighbour to the proposed extensive use area. RBG and the majority of it's guides are intimately familiar with the helicopter skiing program at Selkirk-Tangiers.

Revelstoke Mountain Resort is the next closest neighbour.

### 2.3 Seasonal Expectations of Use

RBG's operating season for proposed extensive and intensive use will be operating from December 1 through May 1.

Client Name: <u>Mike Bromberg</u>			Name of Business: <u>Revelstoke Backcountry Guides</u>			Date: <u>April 22, 2017</u>		
Table 1.1: Level of Guided Activity for Extensive Use Area(s)								
Activity Report				Client Days				
Extensive Area Zone (Map Ref.)	Type of Guided Activity	Period of Use	Existing/ Proposed Use	Current Year	Year Two	Year Three	Estimate of Full Capacity	Year Full Capacity Reached
<u>Twin Butte</u>	<u>backcountry ski tour</u>	<u>Dec 1- May 1</u>	<u>2017-2018 proposed 1st</u>	125	275	400	700	2021/2022

Client Name: <u>Mike Bromberg</u>		Name of Business: <u>Revelstoke Backcountry Guides Inc</u>		Date: <u>May 15, 2017</u>	
Table 1.1: Level of Use at Intensive Use Sites					
Map Reference	Intended Use	Period of Use	Frequency of Use	Type of Improvements	Number of Bed Units
Intensive Site A	Backcountry Hut	Dec 1- May 1	Nightly	base lodge, toilet and storage	10 guest up to 5 staff
Intensive Site B	Emergency Cache	Dec 1- May 1	1 times per month	Small rustic emergency shelter	0

**Heading Definitions:**

- **Intensive Use Site Map Reference:** list each Intensive Use reference separately, e.g. Site #1.
- **Intended Use:** describe intended use (i.e. overnight accommodation for Clients, day use area).
- **Frequency of Use:** Indicate the number of times you plan use the Intensive Use Site, for example, daily, 2 times a week, etc.
- **Period of Use:** Indicate which months of the year plan to use the area (i.e. May – Oct.).
- **Type of Improvements:** list any existing or proposed improvements (i.e base lodge, cabin, corral).
- **Bed Units** – Number of overnight bed accommodations for each Client/guest



### **3.0 Infrastructure and Improvements**

#### **3.1 New Facilities and Infrastructure**

- A. RBG is proposing two intensive use sites within the extensive use area, one of which will eventually be used as the base of operations.

RBG has identified two intensive use sites that would be suitable for base operations. After initial operating year utilizing temporary minimal impact use, we will select one primary intensive use site as base of operations.

Primary Intensive use Site will consist of three structures.

1. 2.5 storey wood framed building consisting of:
  - Sleeping areas to accommodate up to 15 people total
  - Kitchen, pantry and dining area and sitting room
  - Mud room and equipment storage
2. Toilet/outhouse separate structure
3. Auxiliary structure for storage etc



*Example of primary intensive use site in similar position to proposed Intensive Use Site A*

Secondary Intensive use site will be a modest “rustic” structure that will serve as a emergency cache and emergency shelter location 3m x 3m footprint.



*Example of proposed emergency shelter used at secondary intensive use site*

## Construction Timeline

RBG wishes to begin making “improvements” in Fall 2017

### Fall / Winter 2017

Establish, map and explore routes and refine and establish the appropriate terrain and runs for guided use. Establish guided backcountry infrastructure including rescue equipment cache and commonly used helicopter landings.

Overnight use will be limited to minimal impact camping in removable shelters which will not require any significant construction or improvements.

### Summer 2018 - Fall 2018

Begin construction and improvements of the primary intensive use area including establishing outhouses and infrastructure to support emergency use in second operating year at minimum.

### 2018/2019 Winter

Guided backcountry ski tours by helicopter and foot access, select multi-day tours using initial intensive use sites for small groups using structure and temporary structures in minimal impact fashion.

### Spring/Summer 2019

Establish primary intensive use site hut to full buildout

### Winter 2019/2020

Fully operational

### 3.2 Access and egress

Access and egress to the tenured area will primarily via helicopter from Revelstoke, BC. Egress will be by ski or helicopter.

RBG estimates that helicopter access will be utilized no more than 3 days per week at full buildout/capacity.

3.2.1 Helicopter Access will be from Revelstoke primarily using the two flight paths below assuming usage of the Revelstoke airport as staging area.



*Helicopter access flight paths*

3.2.2 Coordination with neighbouring helicopter skiing operation Selkirk-Tangiers



Helicopter Skiing will be required as there is potential for flight paths to intersect for access to the adjacent tenure areas.

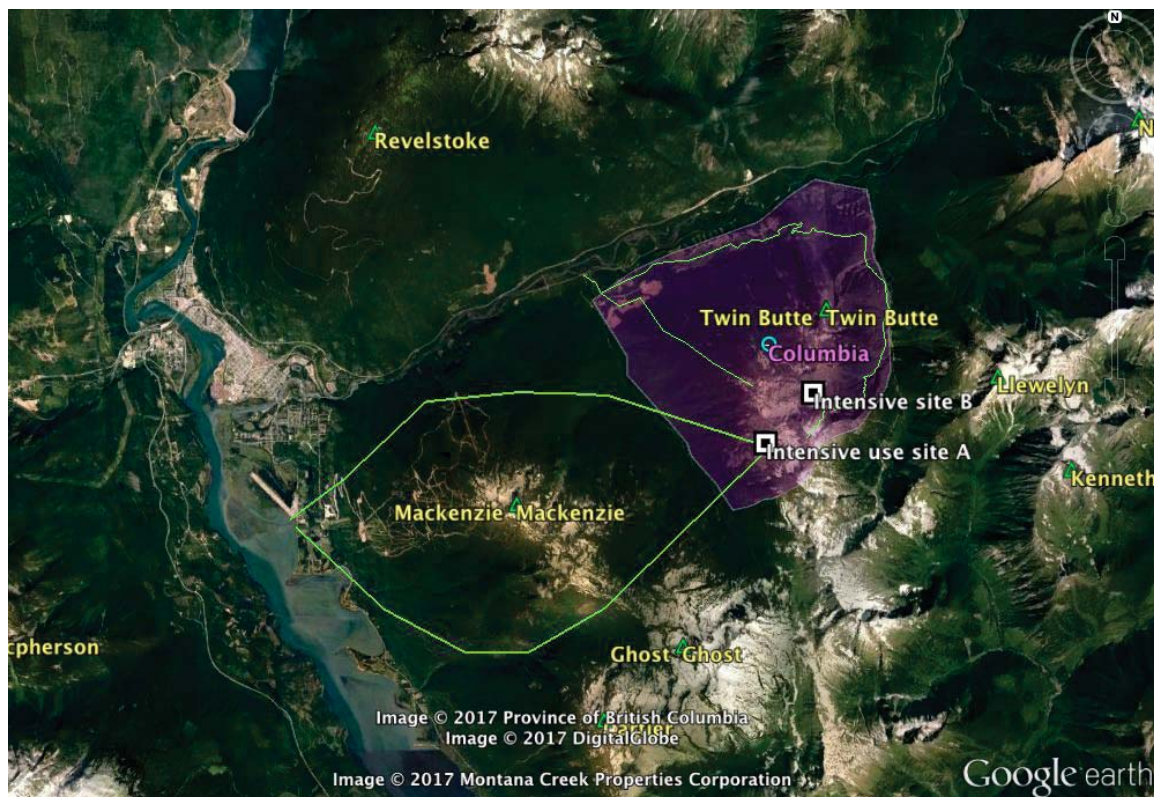
RBG anticipates that it's helicopter use will occur prior to 830am so to limit potential overlapping flight paths with neighbouring helicopter ski operation which begins operations no earlier than 0830am.

Example collaboration between Selkirk-Tangiers and neighbouring operations exist with Selkirk Lodge and Selkirk Mountain Experience, both of whom use a similar model in coordinating adjacent helicopter usage where flight paths have the opportunity to intersect.

3.2.3 Egress from the site will be by either foot/ski downhill via Greeley Creek, or west Twin Creek entirely within the tenured area.

Egress by helicopter pickup is optional for both single and multi-day programs, but will emphasize foot egress when conditions and group abilities are appropriate.

At full operational capacity RBG anticipates helicopter usage to be no more than three days per week.



*Human powered winter egress and helicopter flight paths.*

### 3.3 Utility Requirements and Sources at Intensive Use Site

No grid tied utilities are available at the intensive use site.

#### 3.3.1 Water Supply

Water will be supplied via adjacent creeks and snowmelt.

The intensive use site will not have a measurable effect on drainage or sedimentation. A small amount of water will be extracted from tributary creeks adjacent to the proposed intensive use site for use in the hut and will not have a significant effect on water levels.

#### 3.3.2 Additional Utilities

3.2.3 Heat: The site and structure will be heated by a cast iron wood stove. Wood would be collected from standing dead from throughout the extensive use area as well as flown into the site as needed. Estimated maximum annual wood consumption is 6 cords.

3.2.5 Power: The site will be powered by multiple sources

- a) a micro-hydro electric power system if access to appropriate site is available.
- b) Solar panel/battery bank

3.2.6 Communication: Communication is by two way radio as well as potentially satellite internet and satellite telephone.

3.2.7 Cooking and Kitchen: The site will be equipped with a domestic propane stove/oven and fridge. Propane will be kept outside and attached via heavy duty hose appropriate for outdoor environment.

### 3.6 Waste Collection Treatment and Disposal

3.6.1 Garbage Disposal: RBG will dispose of all waste as per behavior guidelines defined in the “Wildlife Guidelines for Backcountry Recreation/Tourism in BC” document.

3.6.2 Grey Water: Grey water will be disposed of in appropriate grey water pit adjacent to the hut site a minimum of 200’ from any seasonal stream or creek. Any cleaning agents used will be environmentally sound and fully biodegradable and will not drain into any waterway.

3.6.3 Human Waste: All human waste will be flown out periodically in barrels or eliminated using incinerating and/or composting toilets as is common with winter backcountry lodge environment.

## 4.0 Environmental

RBG will operate all activities as per behavior guidelines defined in the “Wildlife Guidelines for Backcountry Recreation/Tourism in BC”

[http://www.env.gov.bc.ca/wld/twg/documents/wildlife\\_guidelines\\_recreation\\_may06\\_v2.pdf](http://www.env.gov.bc.ca/wld/twg/documents/wildlife_guidelines_recreation_may06_v2.pdf) document. Guided groups will adhere to the 7 Leave No Trace Principles listed below once in the operational state when travelling through the extensive use area.

- Plan Ahead and Prepare. ...
- Travel and Camp on Durable Surfaces. ...
- Dispose of Waste Properly (Pack It In, Pack It Out) ...
- Leave What You Find. ...
- Minimize Campfire Impacts. ...
- Respect Wildlife. ...
- Be Considerate of Other Visitors.

Additionally, all guided guests will be traveling over the landscape in winter environment. This area typically has a settled snowpack of over 2.5m for the duration of the operating season.

### 4.1 Land Impacts

#### 4.1.1 Vegetation Removal

a. Land Impact: The current state of the land is rocky subalpine forest and generally intact wilderness consisting of mature timber and seasonal streams throughout.

The extensive use area usage will be in Winter where no impact to the ground cover will be realized due to seasonal snow cover of up to 3m in settled snow depth.

Tree cutting is to be minimized at all times. However, to ensure safe operations under all conditions it may be necessary to remove trees to develop landing zones below tree line and potentially to ensure safe tree-skiing during periods of heightened avalanche hazard.

A small amount of cutting may be also be necessary in the intensive use sites.

All tree cutting will be coordinated through a License to Cut through the Ministry of Forests.

#### 4.1.2 Soil Disturbance

Will there be any areas of soil disturbance, including clearing, grubbing, excavation and levelling?

Minimal soil disturbance is expected with the exception of small trails connecting site structures. Minimal impact structural foundations such as small concrete tube forms “Sonotubes” will be utilized where necessary.

Is the area to be excavated a Brownfield site or has the potential to be contaminated?  
NO

Is there potential for disturbance of archaeological, paleontological fossils or historical artifacts?  
NO

#### 4.1.3 Riparian Encroachment

Will any works be completed within or adjacent to the riparian zone of any water body?  
NO

No works are proposed adjacent to the riparian zone, though commercial users will be guided through such zones in the winter environment.

#### 4.1.4 Pesticides and Herbicides

Will there be any use of pesticides or herbicides during construction, operations and/or maintenance?  
NO

#### 4.1.5 Visual Impacts

Will there be any adverse effects of the projects, and any potential adverse effects on sight lines to the project area from surrounding areas likely to be used for scenic viewing by residents or other users?

NO

#### 4.1.6 Archaeological Sites

Are there any known or high potential (Arch Procedure) archaeological sites within the project area?

NO

Have you conducted an AIA or engaged an archaeologist to assist with your investigations?

NO

#### 4.1.7 Construction Methods and Materials

Identify the types of construction materials, the methods used, their impacts, and any



mitigations:

Construction of site structures will focus on off-site construction and on-site assembly minimizing impact to the land during construction phases and reducing overall environmental impact.

## 4.2 Atmospheric Impacts

### 4.2.1 Sound, Odor, Gas or Fuel Emissions

The project construction or operation cause any of the following to disturbances to wildlife or nearby residents: (Best management practices for sound)

Sound?

Helicopter noise will be present for access and egress flights at the intensive use site approximately three days maximum per week once fully operational. Our aim is to minimize impact on the area by limiting helicopter usage as much as possible.

Odor? No

Gas? No

Fuel Emissions? Fuel emissions will be limited to helicopters during access and restocking flights. Helicopter operations and emissions will comply with Canadian Aviation Regulations.

## 4.3 Water or Land Covered by Water Impacts

### 4.3.1 Drainage Effects

Will the project result in changes to land drainage?

NO

### 4.3.2 Public Access

Will the project result in changes to public access?

NO, there are currently no implications for public users as a result of this project. Public use within the Extensive use area is extremely limited. Intensive use areas will not be conducive to public access as proposed, however minimal impact use within the tenured area would not be restricted.

### 4.3.3 Flood Potential

Will the project result in a potential for flooding?

NO

#### 4.4 Fish and Wildlife Habitat Impacts

4.4.1 Fish Values All seasonal creeks and small bodies of water within the extensive use area originate from seasonal snowmelt and permanent snowfields that are non fish bearing. RBG anticipates no impact to existing fish habitat and waterways.

4.4.2 Wildlife Values: RBG and it's guests are visitors within the habitat of several valuable species and will operate with extreme awareness as to our impact to each species as visitors. The following are potential species and the specific mitigations for each.

Although no specific identified habitat is revealed when researching Wildlife Habitat Areas through iMapBC, the proposed tenure may contain several species at risk including grizzly bear, wolverine, mountain goat, cougar, moose, mule deer and white-tailed deer.

RBG will adhere to best practices as outlined in the Wildlife Guidelines for [Backcountry Tourism/Commercial Recreation in British Columbia](#) at all times when operating within the proposed tenure area.

Of special note, RBG will be particularly sensitive to any potential impact that helicopters may have on the area with regards to wildlife. At all times RBG and contracted helicopter pilots will maintain a sufficient distance of “more than 500m” from Caribou and “more than 1500m” from Mountain Goat and overall eliminate any harassment caused by aircraft and no rate of alarm.

Will the project (construction or operations phase) occur in and around streams, lakes, estuarine or marine environments?

YES, the project will occur around seasonal stream, though low/no impact on any aspect is anticipated.

Is the project (construction or operations phase) likely to increase erosion or sedimentation? NO

Will the project (construction or operations phase) require water diversion? NO

## 5.0 Socio-Community

### 5.1 Land Use

Describe the current community setting on or near the project area, including the location

of non-aboriginal and aboriginal communities or known use areas.

The Revelstoke area currently faces challenges with close proximity recreation areas such as Mt Macpherson that are currently conflicting with logging and/or other industries. This specific tenure will serve as a makes use of a very limited amount of available tenure in the area and does not have conflict with any existing tenure holders.

Although there exist an abundance of guides and tour operators who are active in the mechanized skiing and wintersports tourism industry. This proposed tenure would be the only operation with non-mechanized access as a realistic option.

#### 5.1.1 Land Management Plans and Regional Growth Strategies

Are there any land and resource management plans, coastal plans, provincial, regional growth strategies or local government plans with zoning, or management policies or use restrictions in place that could limit or preclude your proposed use of the land? (Please refer to the Union of BC Municipalities (UBCM), and check the websites of the municipality, regional district or other organization with jurisdiction including your project area.)

There is no indication that this specific area has any overlap that might limit or preclude access or interests in the area.

#### 5.2 Socio-Community Conditions

##### 5.2.1 Adjacent Users or Communities

Is the project likely to restrict public access, or the ability, or the ability of adjacent landowners or tenure holder to access their property or tenures?

No. Revelstoke Backcountry Guides does not intend to restrict public users from the area and does not anticipate that any operations of Revelstoke Backcountry Guides traveling in or near the adjacent tenures of Revelstoke Mountain Resort or Selkirk-Tangiers Helicopter Skiing to be in any way a detriment to the guest experience of any operations.

RBG has shown to have a positive impact in the community employing several full time year round staff and numerous local guides and vendors within the community. RBG's ongoing collaboration with Revelstoke Mountain Resort has contributed to a prospering backcountry presence at the resort and in the community.

The proposed Adventure Tourism tenure will grow our opportunities to support our thriving community as a destination for adventure tourism.

The proposed Tenure Management Plan has been Shared with Jeff Honig and Eriks Suchovs of Selkirk-Tangiers Helicopter Skiing as well as Steve Bailey and Peter Neilsen of Revelstoke Mountain Resort. Correspondence is attached included as additional documentation.

#### 5.2.2 First Nations Consultation

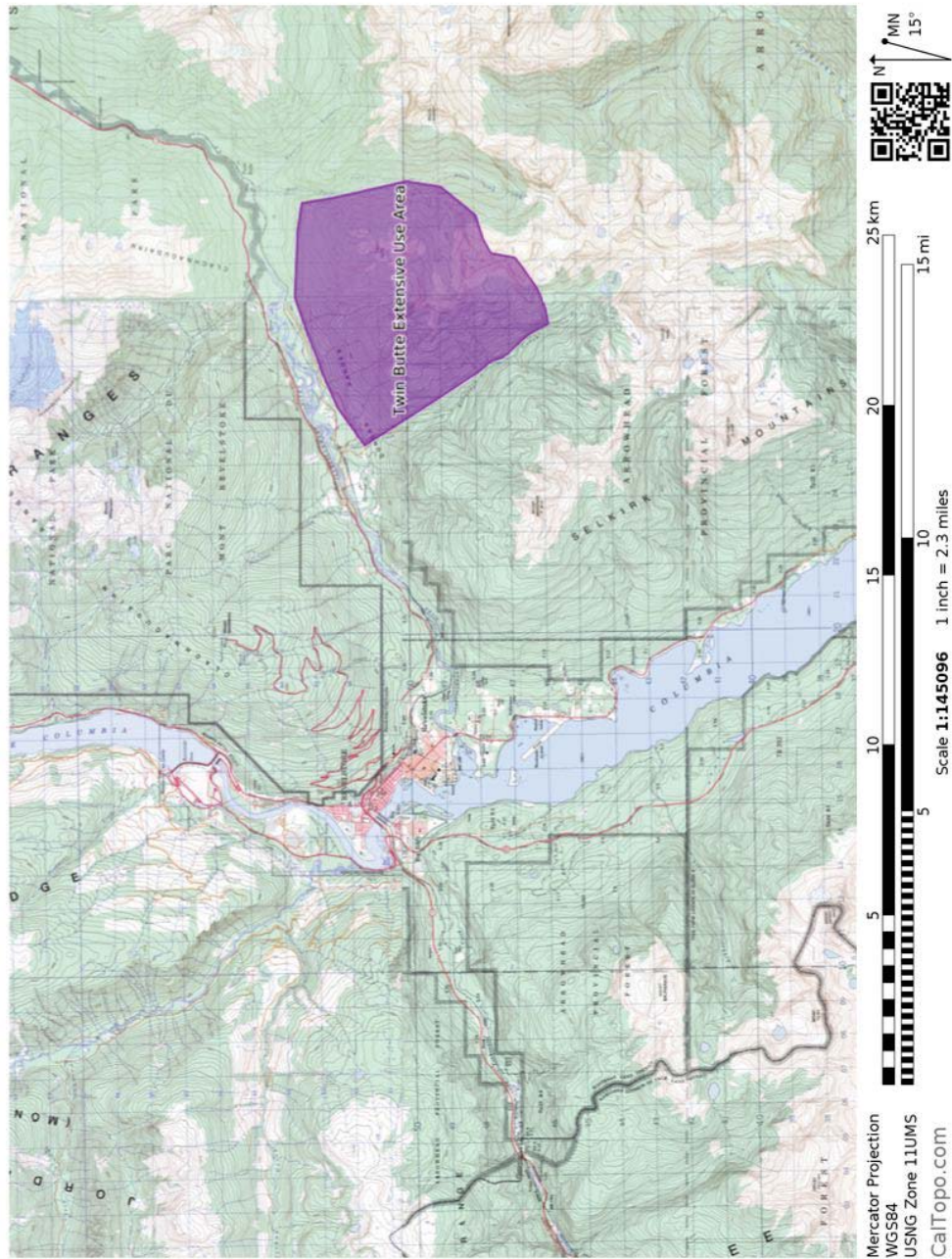
No contact or consultation has been made with First Nations groups prior to application. Front Counter BC. Based on previous experience, this process will occurs once application is under review.

#### 5.2.3 Existing Services

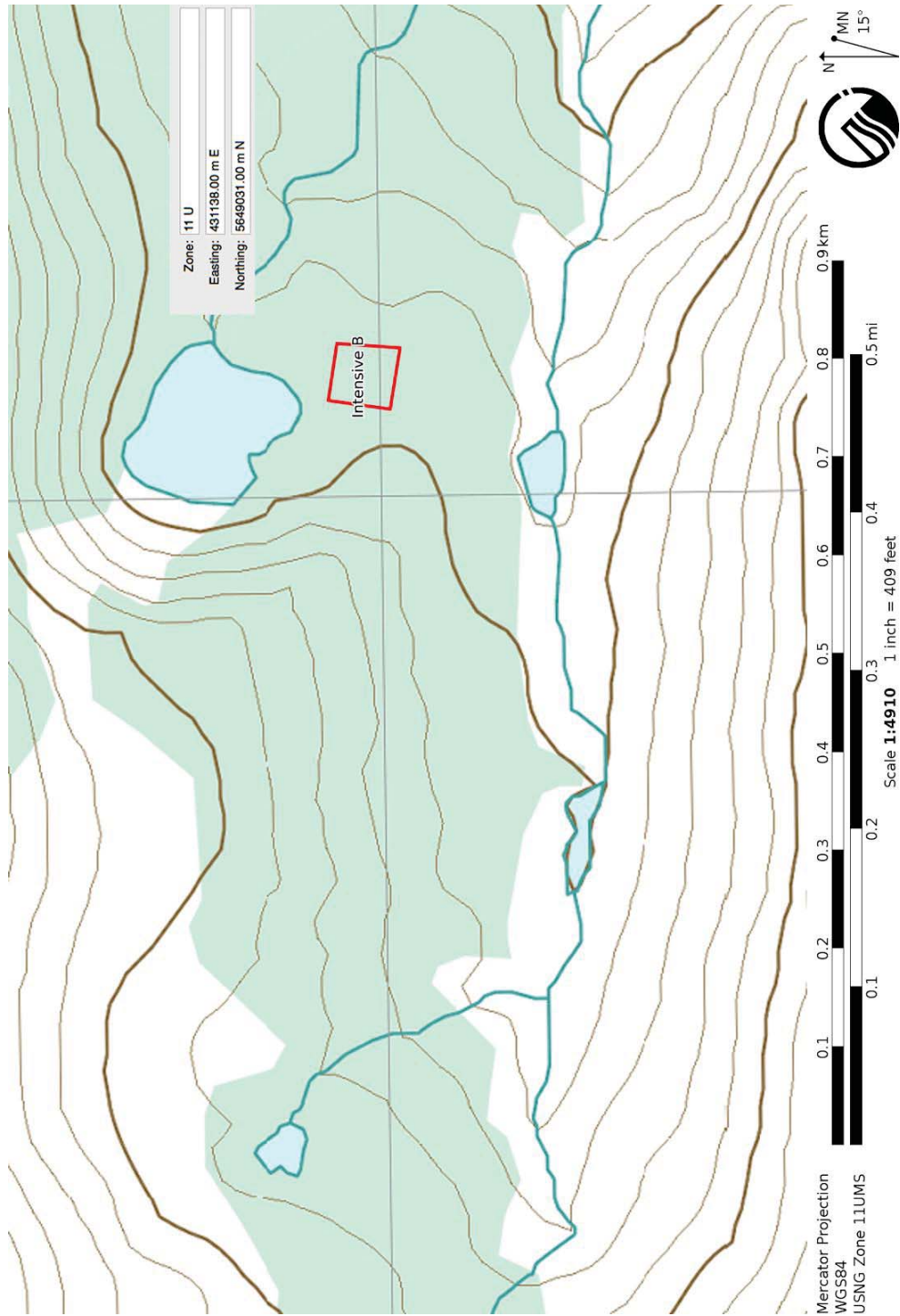
Provide a description any increased demand on fire protection and other health facilities and emergency services arising from your Project, including proposed management or mitigation measures.

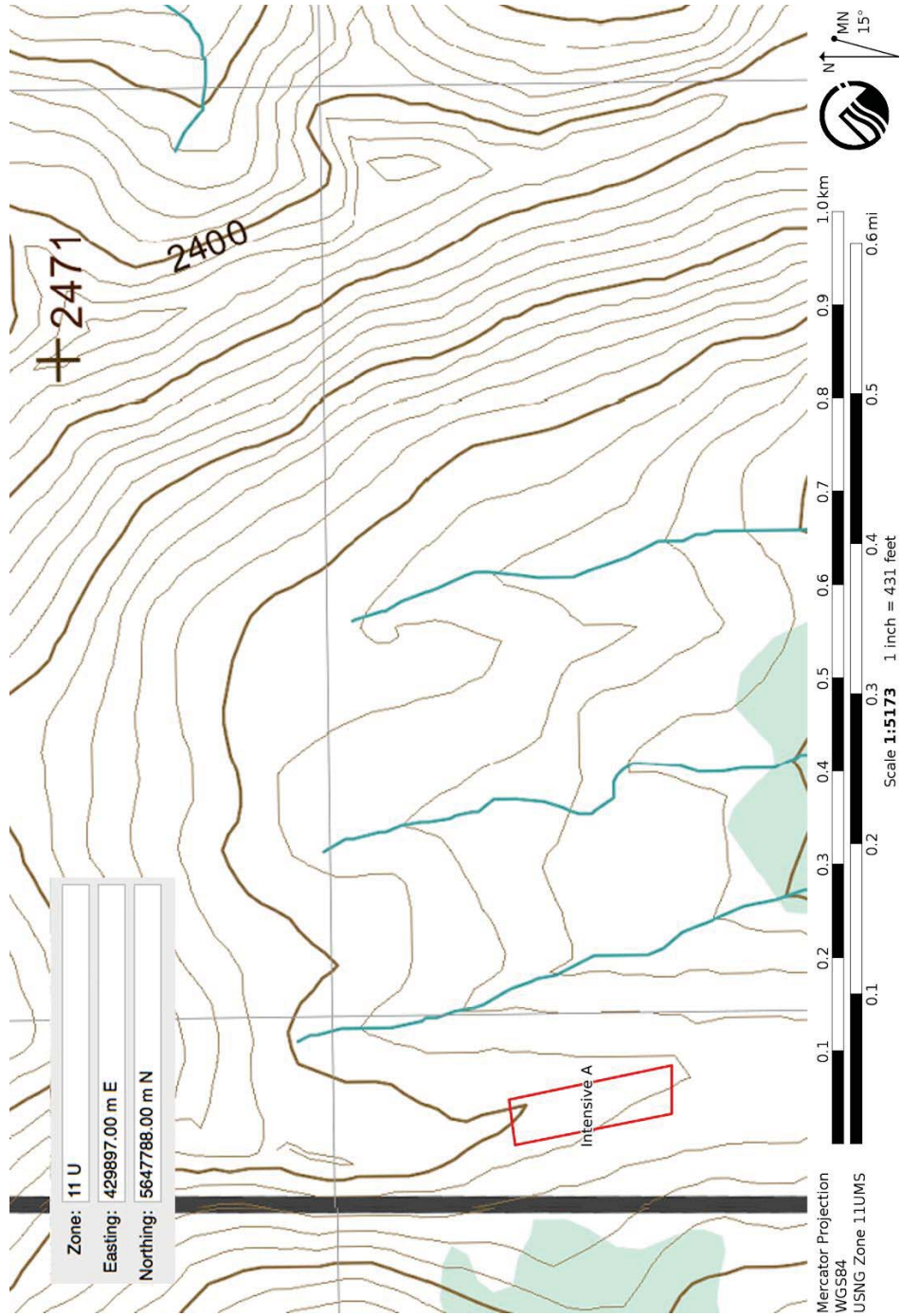
No increased demand on any existing services is anticipated.





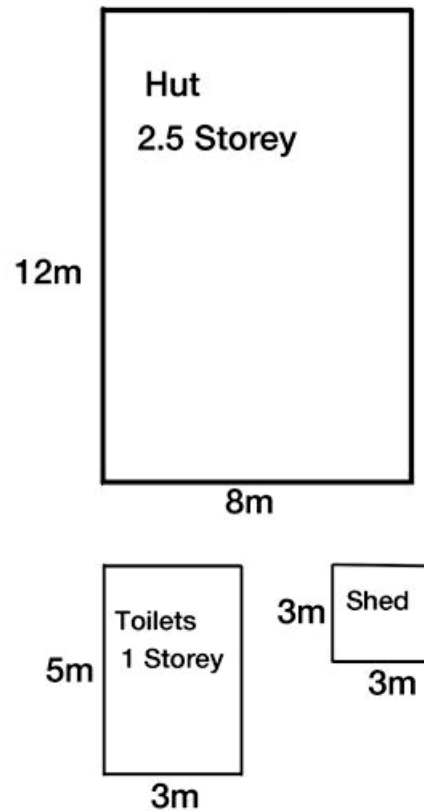








## Revelstoke Backcountry Guides Intensive Use Area A Site Plan

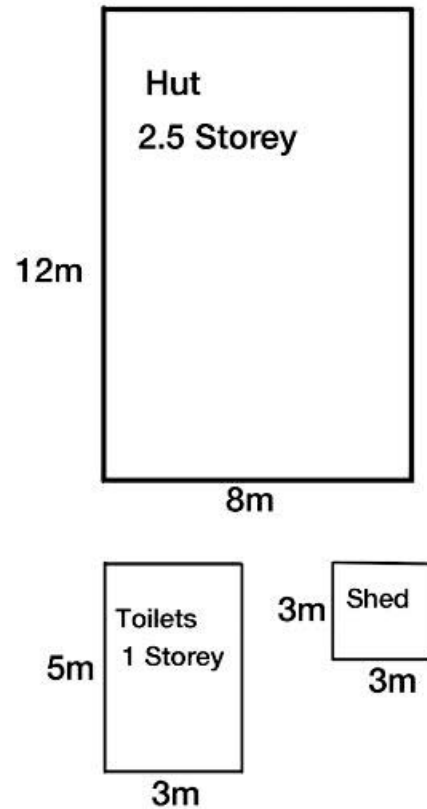


Elevation 2200m  
Coordinates 11U 429897 m E 5647788 m N  
3.61 km South of Twin Butte

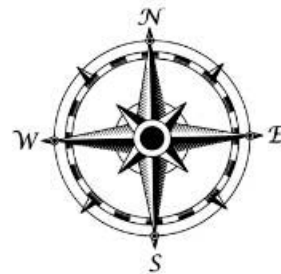


*Site plan if intensive use site A is selected as primary base of operations.*

## Revelstoke Backcountry Guides Intensive Use Area B Site Plan



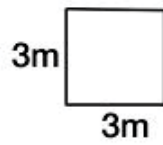
Elevation 1994m  
Coordinates 11U 431138 m E, 5649031m N  
2.09 km South of Twin Butte



---

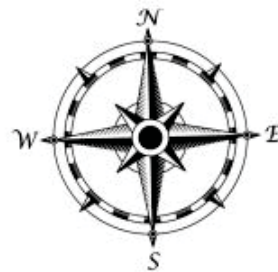
*Site plan if intensive use site B is selected as primary intensive use site*

## Revelstoke Backcountry Guides Intensive Use Area B Site Plan



Emergency Shelter

Elevation 1994m  
Coordinates 11U 431138 m E, 5649031m N  
2.09 km South of Twin Butte



*Site plan for Emergency Shelter used at Secondary Intensive Use Site*



Client Name: Mike Bromberg Name of Business: Revelstoke Backcountry Guides Inc Date: May 15, 2017

**Table 1.1: Level of Guided Activity for Extensive Use Area(s)**

Activity Report				Client Days				
Extensive Area Zone (Map Ref.)	Type of Guided Activity	Period of Use	Existing/ Proposed Use	Current Year	Year Two	Year Three	Estimate of Full Capacity	Year Full Capacity Reached
<u>Twin Butte</u>	<u>Backcountry ski tour</u>	<u>Dec1- may 1</u>	<u>proposed</u>	<u>125</u>	<u>275</u>	<u>400</u>	<u>700</u>	<u>2021/2022</u>

**Heading Definitions:**

- **Extensive Area Zone:** Each area/polygon is listed separately; indicate the Extensive Area Map reference name or number.
- **Type of Activity:** For each map reference list each type of activities being offered. If you combine activities as an overall experience within the same area (i.e. hiking and wildlife viewing), list the activity as one entry. If you offer two separate activities as two separate experiences within the same area of use (i.e. hiking and snowmobiling), enter the activities as separate entries.
- **Period of Use:** Indicate which months of the year you will be using this area (i.e. May – Oct.).
- **Existing/Proposed:** For existing uses, state the first year this area was used. For proposed uses, indicate which year you plan to start using this area.
- **Client Days:** For each activity listed on the table provide the current level of use (if area is proposed for future use, provide projections) and projections for Year 2 up to full capacity. To calculate client days, multiply the number of trips by the number of clients by the length of the trip.
  - Example 1: Your operation will take 5 trips of 10 clients per trip for a 5-day trip =  $5 \times 10 \times 5 = 250$  client days.
  - Example 2: Your operation will take 20 day trips of 25 clients =  $20 \times 25 = 500$  client days

Client Name: Mike Bromberg Name of Business: Revelstoke Backcountry Guides Inc Date: May 15, 2017

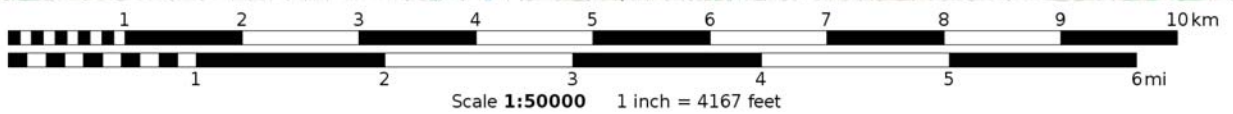
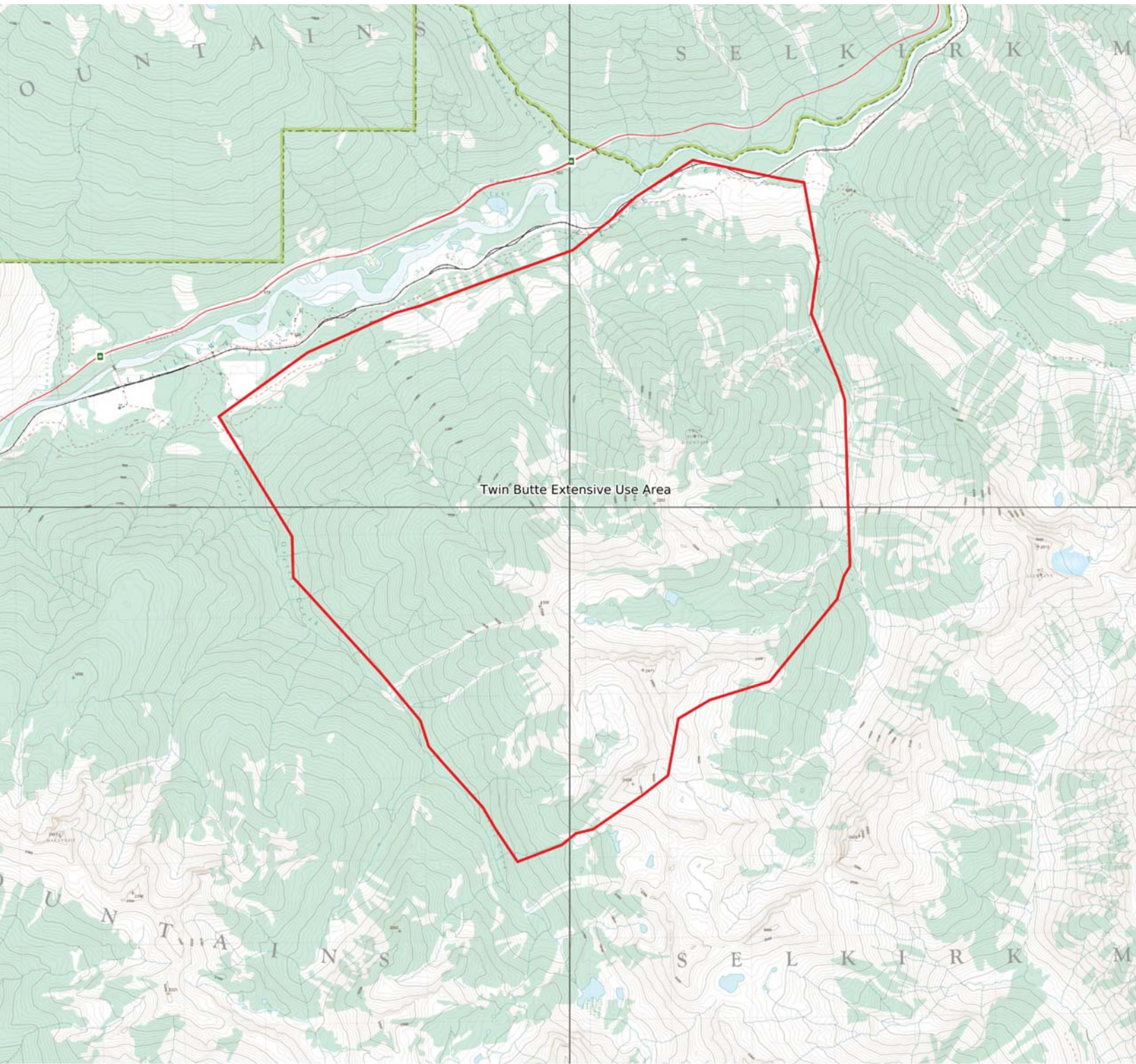
**Table 1.1: Level of Use at Intensive Use Sites**

Map Reference	Intended Use	Period of Use	Frequency of Use	Type of Improvements	Number of Bed Units
Intensive Site A	Backcountry Hut	Dec 1- May 1	Nightly	base lodge, toilet and storage	10 guest up to 5 staff
Intensive Site B	Emergency Cache	Dec 1- May 1	1 times per month	Small rustic emergency shelter	0

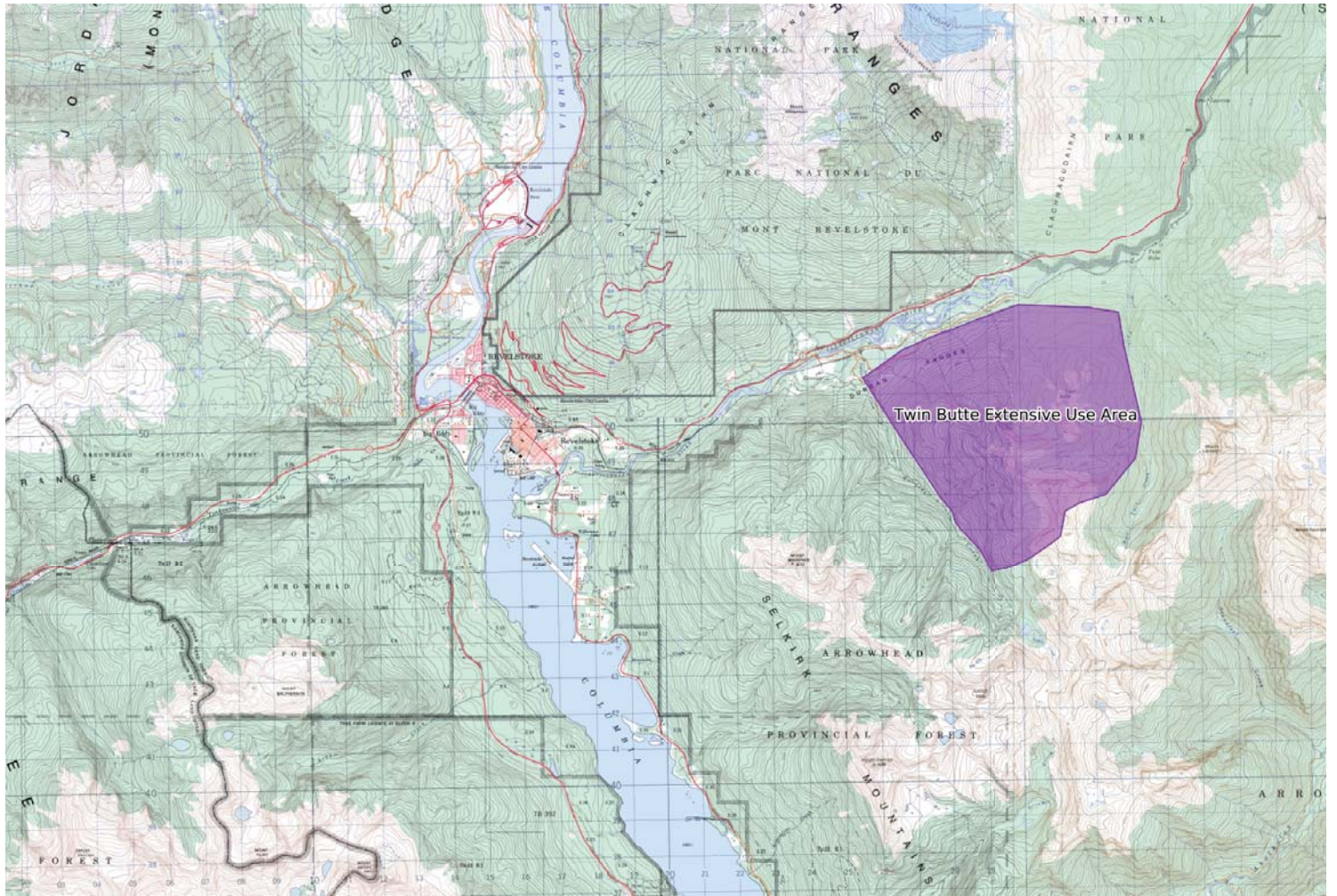
**Heading Definitions:**

- **Intensive Use Site Map Reference:** list each Intensive Use reference separately, e.g. Site #1.
- **Intended Use:** describe intended use (i.e. overnight accommodation for Clients, day use area).
- **Frequency of Use:** Indicate the number of times you plan use the Intensive Use Site, for example, daily, 2 times a week, etc.
- **Period of Use:** Indicate which months of the year plan to use the area (i.e. May – Oct.).
- **Type of Improvements:** list any existing or proposed improvements (i.e base lodge, cabin, corral).
- **Bed Units** – Number of overnight bed accommodations for each Client/guest









Mercator Projection  
WGS84  
USNG Zone 11UMS  
CalTopo.com

