

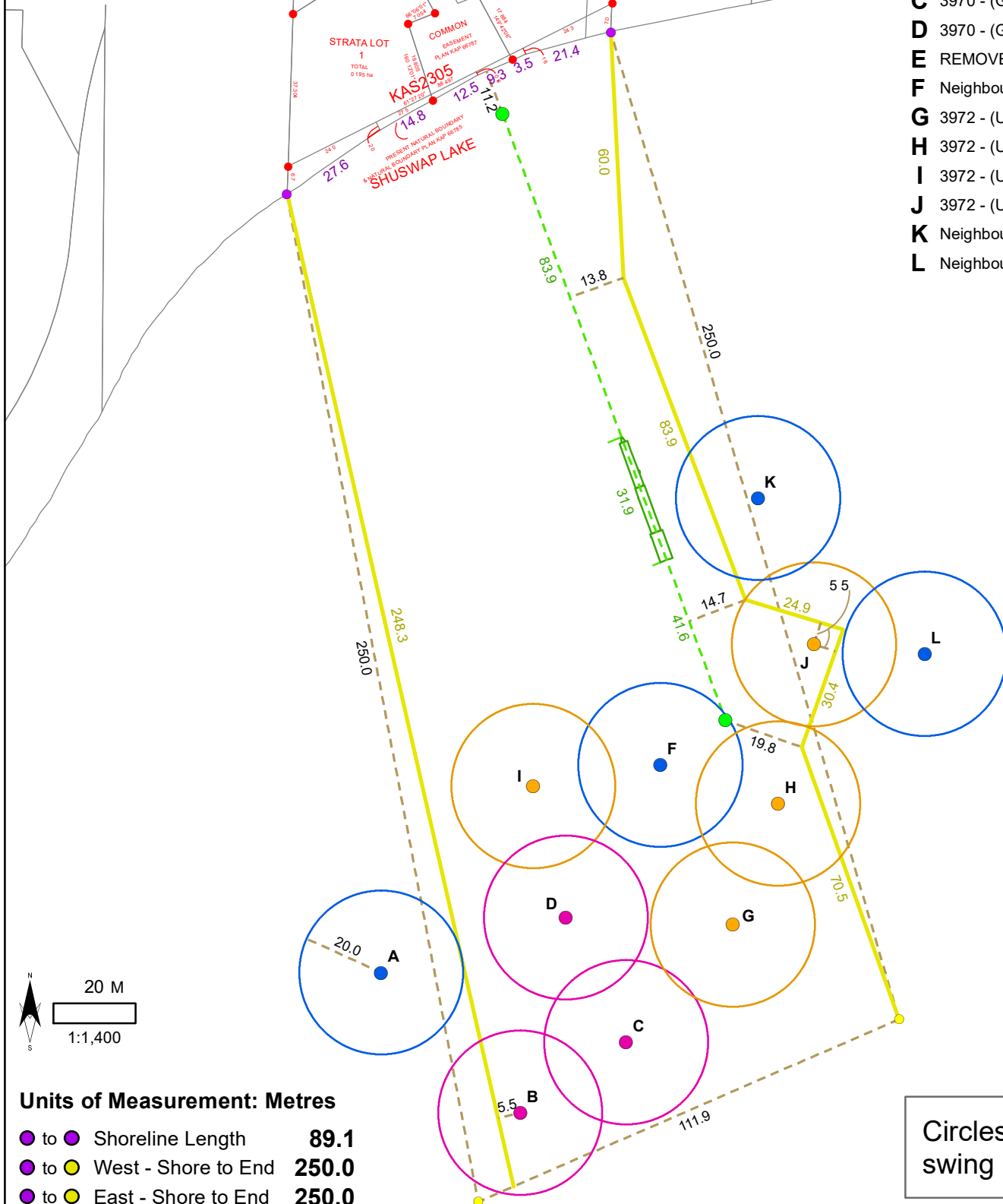
Gray / Ulry Dock and Buoys

as submitted by Norm Gray
on September 11, 2017
via email of CAD (.dwg) file

ammended using data
submitted by client showing
PROPOSED NEW locations
August 27, 2018 and
September 6, 2018

Legend

- Dock Cable Anchor
- Neighbours Buoys
- Gray Buoys
- Ulry Buoys
- A** Neighbour - Blue
- B** 3970 - (Gray #1)
- C** 3970 - (Gray #2)
- D** 3970 - (Gray #3) - NEW location
- E** REMOVED
- F** Neighbour - Bastion Village
- G** 3972 - (Ulry #1) - NEW location
- H** 3972 - (Ulry #2)
- I** 3972 - (Ulry #3) - NEW location
- J** 3972 - (Ulry #4)
- K** Neighbour - XXXXXXXXXX
- L** Neighbour - Party Boat



Units of Measurement: Metres

- to ● Shoreline Length **89.1**
- to ● West - Shore to End **250.0**
- to ● East - Shore to End **250.0**
- B** to West Boundary Line **5.5**
- J** to East Boundary Line **5.5**

Circles show 20 m
swing radius

This data in this map was derived from the submitter's own data.
The CSRD does not warrant the map, or its features, are either
spatially or temporally accurate. The CSRD provides the map
without any warranty of any kind, either express or implied.