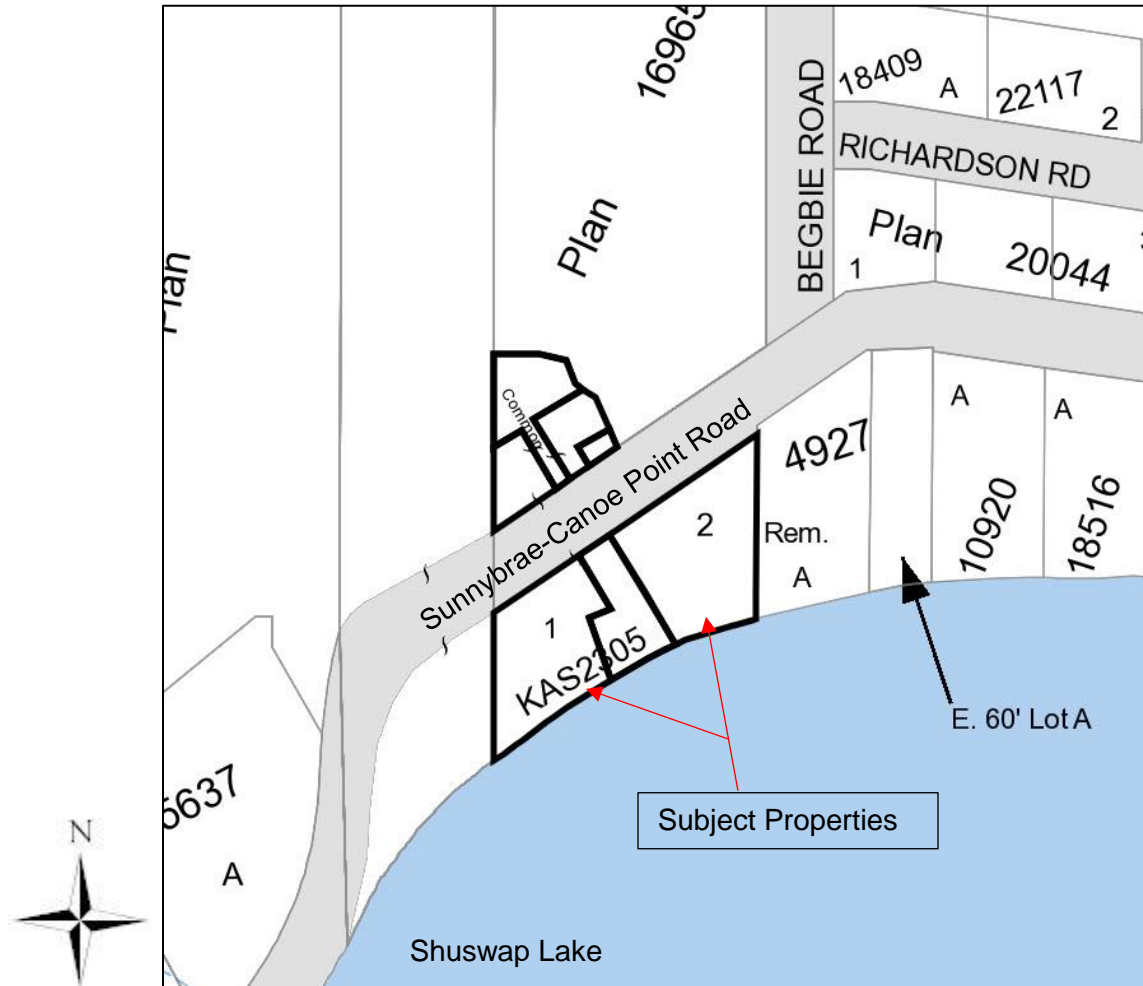
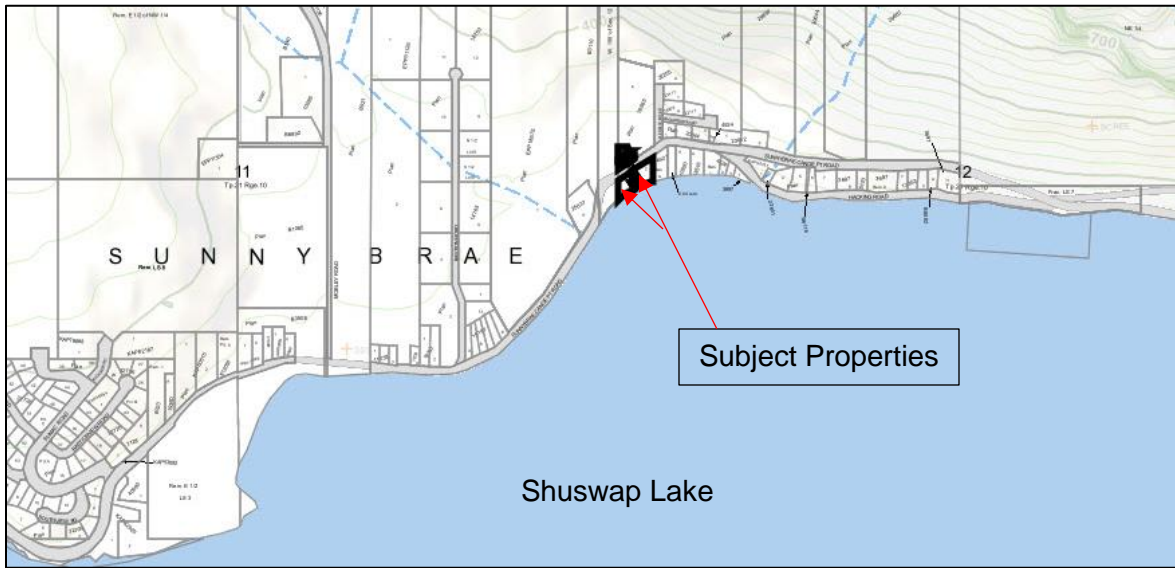
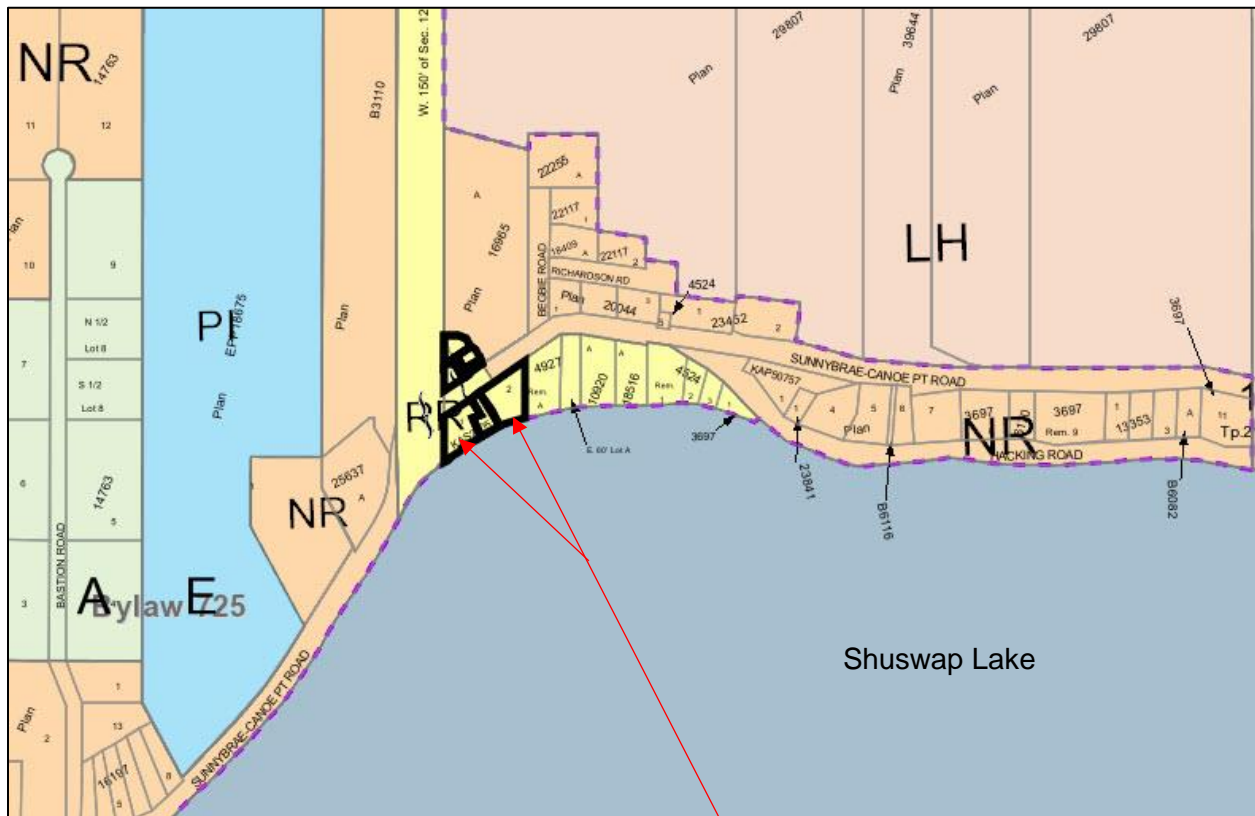


Location

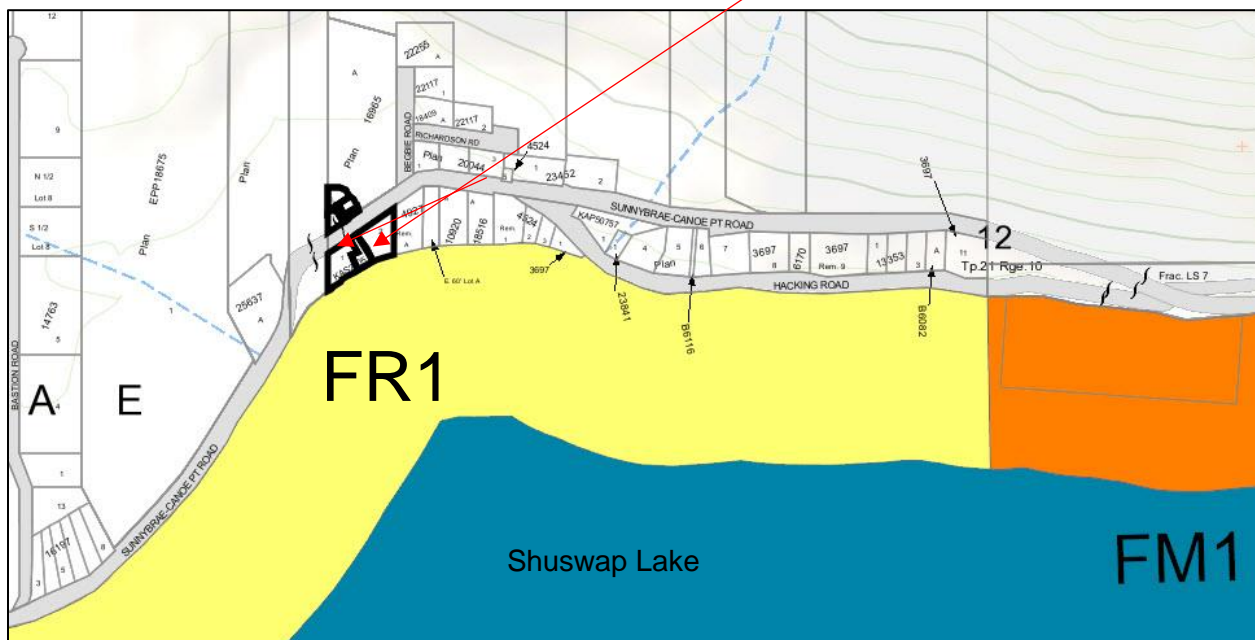


OCP

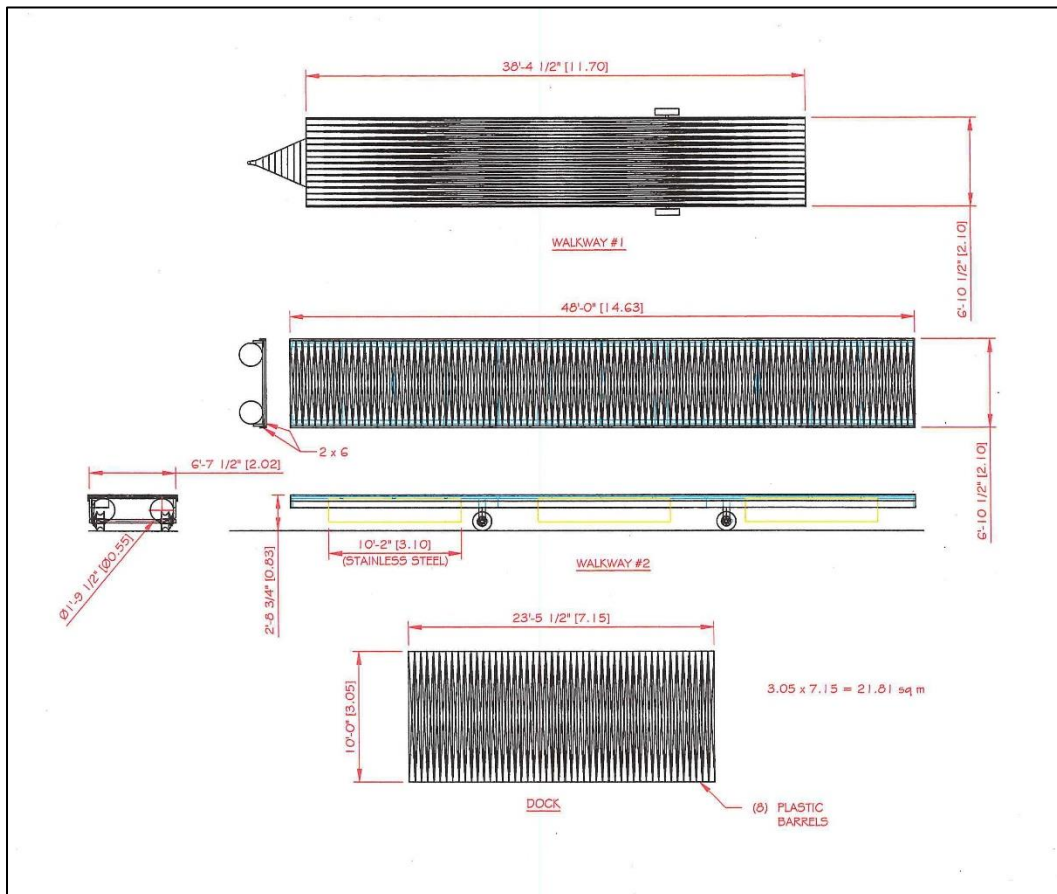
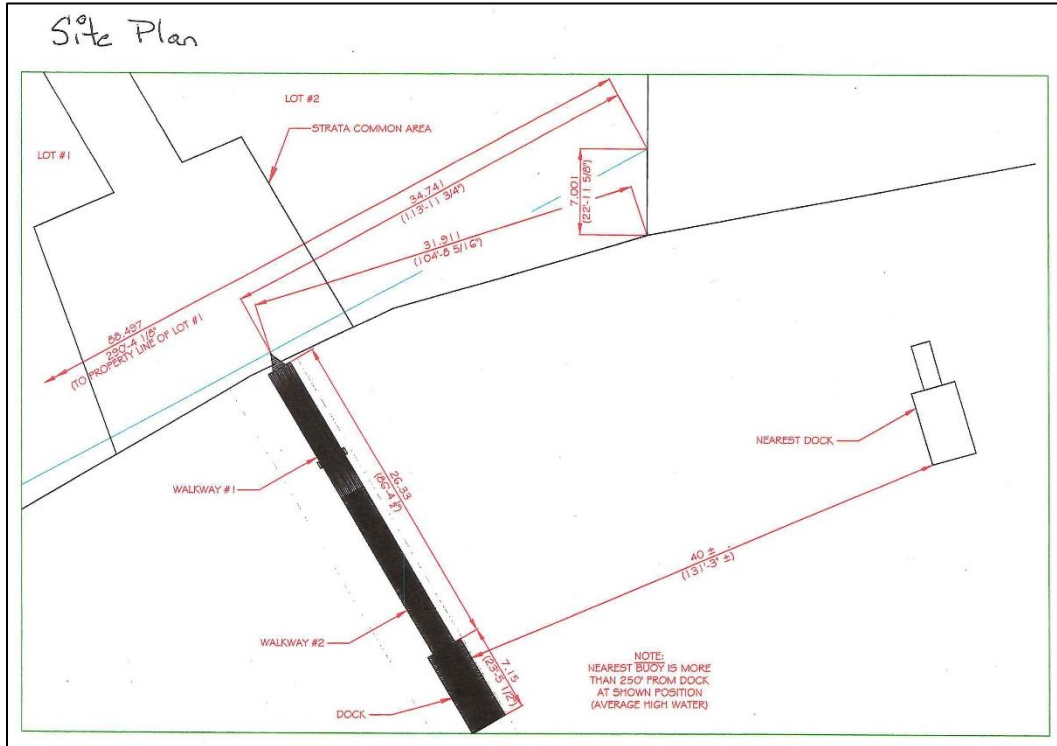


Subject Properties

Lakes Zoning



Site Plan

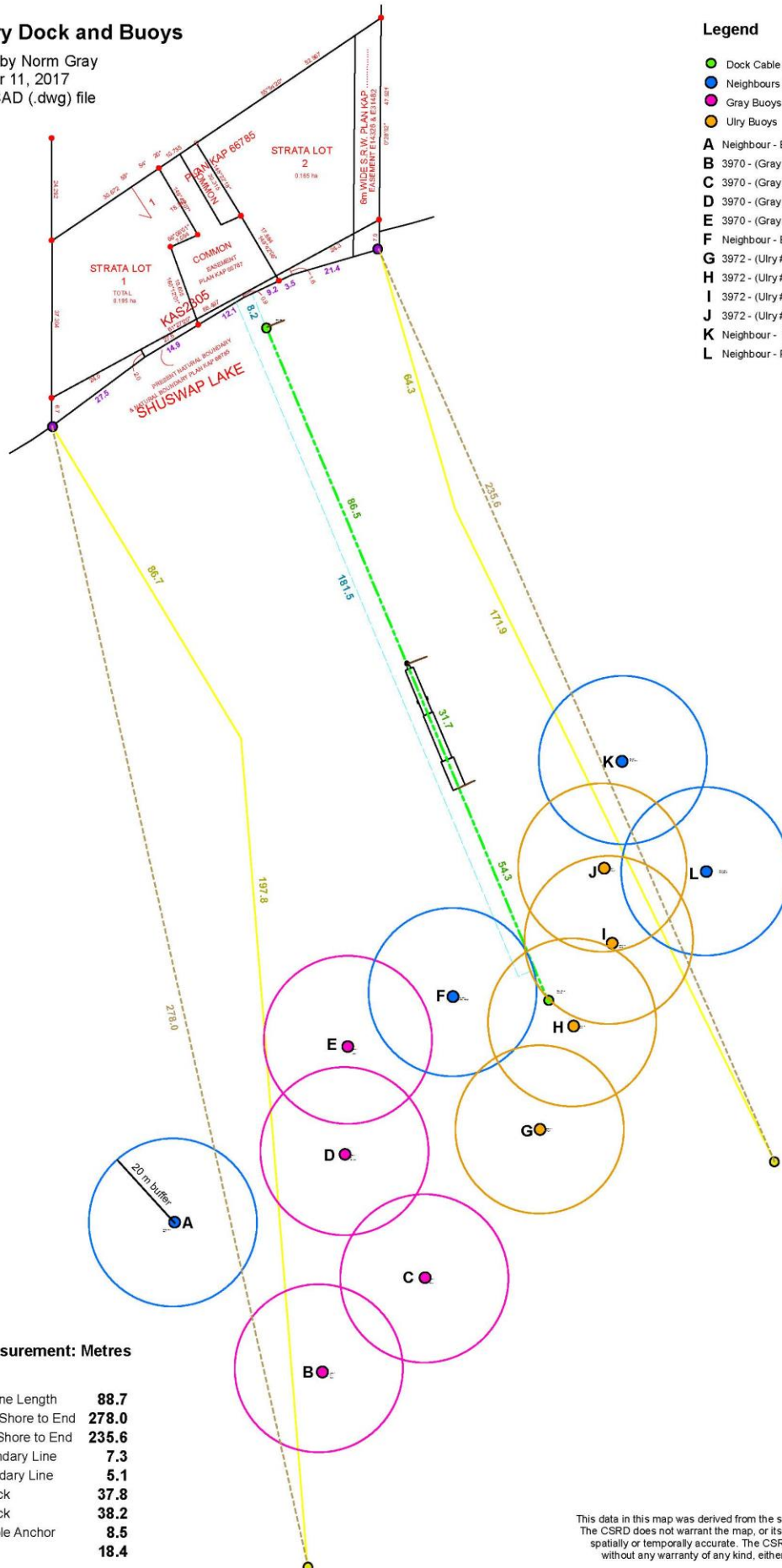


Gray / Ulry Dock and Buoys

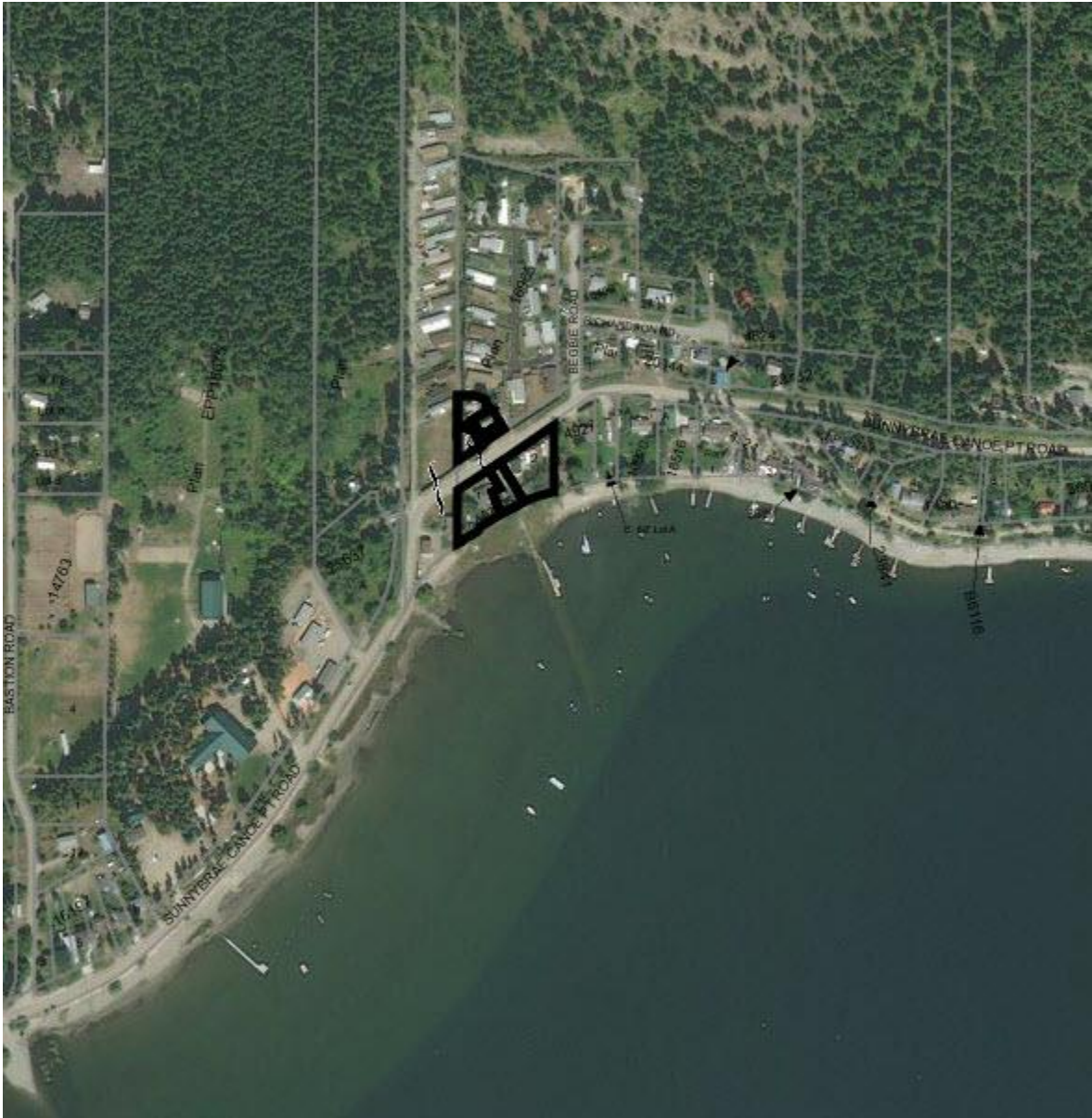
as submitted by Norm Gray
on September 11, 2017
via email of CAD (.dwg) file

Legend

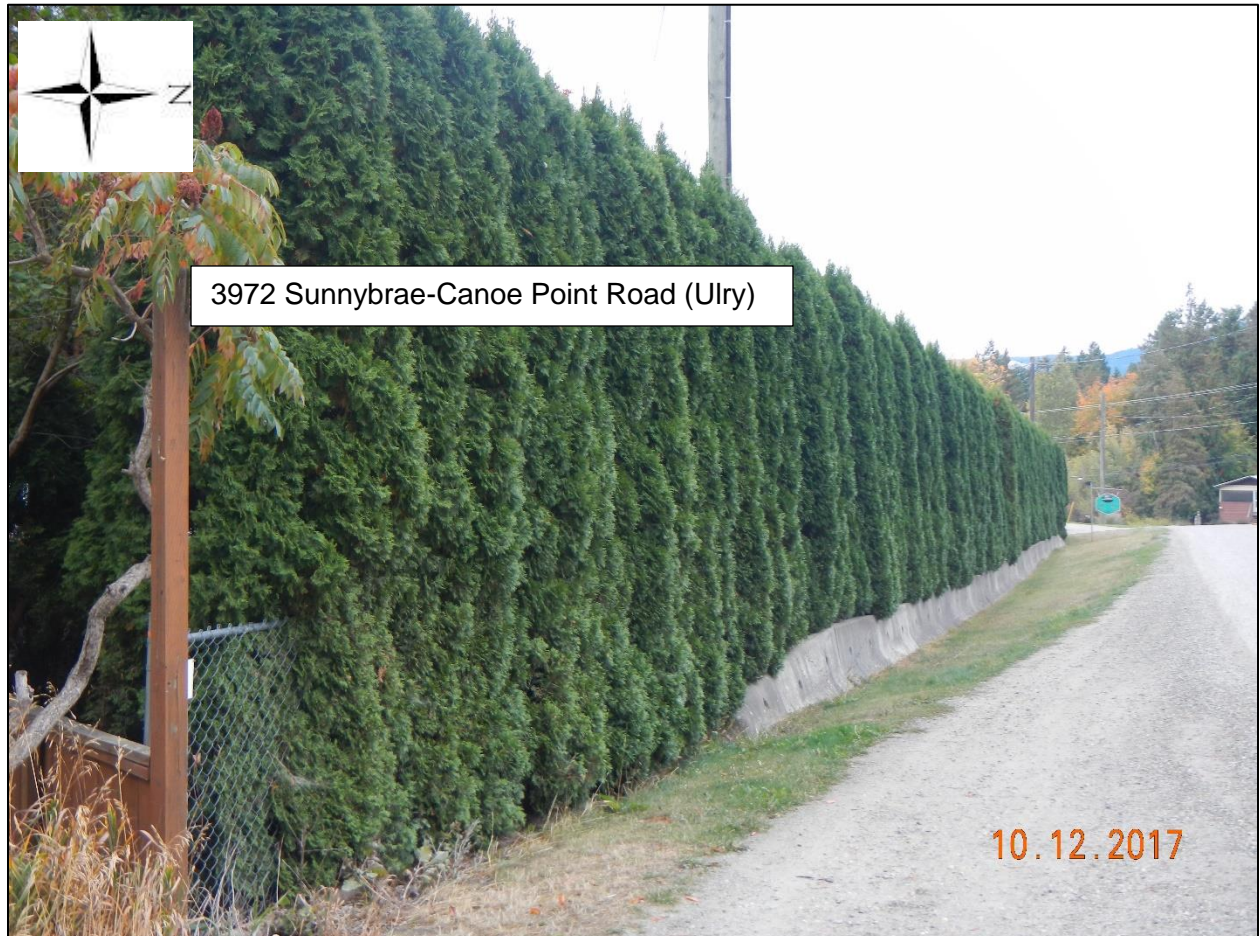
- Dock Cable Anchor
- Neighbours Buoys
- Gray Buoys
- Ulry Buoys
- A** Neighbour - Blue
- B** 3970 - (Gray #1)
- C** 3970 - (Gray #2)
- D** 3970 - (Gray #3)
- E** 3970 - (Gray #4)
- F** Neighbour - Bastion Village
- G** 3972 - (Ulry #1)
- H** 3972 - (Ulry #2)
- I** 3972 - (Ulry #3)
- J** 3972 - (Ulry #4)
- K** Neighbour - Robert
- L** Neighbour - Party Boat



Orthophoto



Photos





3967 Sunnybrae-Canoe Point Road (Gray)

3965 Sunnybrae-Canoe Point Road (Gray)



3970 Sunnybrae-Canoe Point Road (Gray)





3972 Sunnybrae-Canoe Point Road (Ulry)

10.12.2017

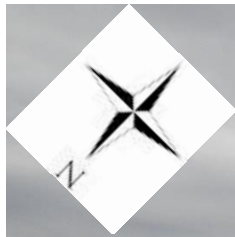


3970 Sunnybrae-Canoe Point Road (Gray)

10.12.2017













Floating dock

Walkway



Walkway

