



COLUMBIA SHUSWAP REGIONAL DISTRICT

Regular Board Meeting

LATE ITEMS AGENDA

Date: Thursday, January 10, 2019
Time: 9:30 AM
Location: CSR D Boardroom
555 Harbourfront Drive NE, Salmon Arm

Pages

3. Delegations

***3.1 10:00 AM: Interior Lumber Manufacturers Association (ILMA)** 1

Brian Simpson, Technical Adviser for the ILMA, in attendance to present to the Board technical information on the Timber Harvest Land base and associated land use integration issues.

*Presentation attached to the Late Agenda.

***3.2 10:15 AM: CAREX Canada, Health Canada, Little Bear Engineering** 25

Lindsay Forsman-Phillips, CAREX Canada; Micky Leung, Health Canada and Chantal Wilson, Little Bear Engineering in attendance electronically to inform the Board of Radon Exposure in the Interior region of BC.

Informational letter attached for reference.

*Presentation attached to the Late Agenda.

4. Correspondence

***4.1 Ministry of Forests, Lands, Natural Resource Operations and Rural Development (December 21, 2018)** 45

Letter from Paul Rasmussen, Assistant Deputy Minister in response to Chair Martin's letter dated November 29, 2018 regarding Newsome Creek Erosion in Sorrento, Electoral Area C.

Chair Martin's letter also attached for reference.

Note to Board: The Chief Administrative Officer, in consultation with Area C Director, proposes two resolutions for Board consideration.

Motion

THAT: the Board authorize access of up to \$25,000 from revenue earned in fiscal year 2018 from Structural Protection Unit (SPU) deployments as matching funding from Emergency Management BC (EMBC) to undertake a remediation work plan and ravine stabilization assessment on Newsome Creek at Caen Road;

AND FURTHER THAT: the 2019 Budget be amended to reflect the above-noted change.

Motion

THAT: staff be authorized to make applications under the applicable federal and provincial funding programs identified in the Ministry's letter to pay for the remediation works required to address the current safety, erosion, and stability issues along Newsome Creek at Caen Road.

***4.2 Ministry of Forests, Lands, Natural Resource Operations and Rural Development (December 28, 2018)**

49

Copy of letter from Paul Rasmussen, Assistant Deputy Minister, in response to Wes and Barb Berg of Newsome Creek Watershed Action Group's letter dated November 29, 2018 regarding Newsome Creek Erosion in Sorrento, Electoral Area C.

Copy of letter from Wes and Barb Berg, Newsome Creek Watershed Action Group, also attached for reference.

For information.

***4.3 Ministry of Forests, Lands, Natural Resource Operations and Rural Development (December 28, 2018)**

54

Copy of Email Message from Paul Rasmussen, Assistant Deputy Minister, in response to correspondence by concerned citizens regarding Newsome Creek Erosion in Sorrento, Electoral Area C.

For information.

***4.4 District of Sicamous (January 7, 2019)**

57

Request from District of Sicamous for Letter of Support from CSRD Board regarding an application for a \$6M grant (Rural & Northern Communities) to build a wellness/healing centre in Sicamous.

Motion

THAT: the Board provide a letter of support to the District of Sicamous in relation to its grant application to the Canada-British Columbia - Rural & Northern Communities Program, to build a Community Wellness Centre, as well as a regional healing centre for Indigenous and non-Indigenous peoples, noting the intention for this facility to be built in the District of Sicamous (Main Street) to serve as a regional hub for both physical and mental health support.

Motion

THAT: the correspondence contained on the January 10, 2019 Regular Board Meeting agenda be received for information.

7. **Business By Area**

***7.3 Request for Board Support – Letter to Ministry of Transportation and Infrastructure**

67

Requested by Director Brooks-Hill

Request for letter of Board support regarding traffic-safety concerns at Pine and Poles Roads/Trans Canada Highway, Electoral Area B.

*Motion and map of area included on the Late Agenda.

Motion

THAT: the CSRD Board write the Ministry of Transportation and Infrastructure with a request that the Ministry provide, for the Pole/Pine Roads/Trans Canada Highway, Electoral Area B, CSRD:

1. Lighting at these intersections;
2. Reflectors on the road indicating upcoming intersection and the appropriate signage;
3. A lower speed limit of 60 - 80 km/h from Revelstoke City Limits at these intersections.

Delegation Request Form



Appearing Before the Board as a Delegation

Instructions and Information

Board meetings are generally held on the third Thursday of each month. Please refer to the calendar on the [CSRD's website](#) for the actual dates, or contact the CSRD offices at 250-832-8194 for the upcoming Board Meeting dates.

Delegations are limited to three (3) per meeting; slots often book up quickly.

Delegations are permitted up to fifteen (15) minutes for their presentation. Board members may ask questions after the presentation for clarification.

In order to schedule a date to appear before the Board, delegations must provide the information on the attached form. This information will be included in the agenda. By providing this detail it clarifies the purpose of the delegation for the Board and allows Board members and staff to become familiar with your topic and to obtain any necessary background information.

Your contact information will be included with your delegation information and circulated to the Board. If you do not wish your address to be included in the public agenda, please advise Corporate Administration Services at the time your Delegation request is submitted.

Contact Information

Name of Person or Organization *

Interior Lumber Manufacturers Association (ILMA), Brian Simpson, ILMA Technical Adviser

Contact Information Provided * (?)

☒ Phone Number ☒ Email Address ☐ Mailing Address

Phone Number *

2503045961

Email Address *

wildfire.simpson@outlook.com

If your application is approved, it will be included on the Board meeting agenda. Do you consent to your personal information being included on the Board Agenda? *

☒ Yes ☐ No

Presentation Information

Topic of discussion *

Present technical information on the Timber Harvest Land base and associated land use integration issues.

Purpose of Presentation *

Note: A letter outlining the Request or the Information must accompany the Delegation Request form

☒ Information Only

☐ Requesting Support

☐ Requesting Funding

☒ Other

Meeting Date Requested * (?)

10-Jan-19

Alternate Date Requested (?)**Comments**

If date in January is unavailable then please present next available alternatives.

This presentation is technical information on the Timber Harvest Land base and associated land use integration in BC and how it relates to the future of the forest industry and specifically ILMA businesses and their associated economic development for the regions we operate in. ILMA provide over 2500 direct and indirect jobs in the southern interior and the 17 primary facilities provide >\$120M in payroll and >\$250M in goods and services purchased annually.

At the ILMA 2018 Convention this past June in Revelstoke, a similar presentation was made and was well received. The select local government officials who were able to attend strongly urged us to ensure all local governments see this information to help better inform their understanding and decision-making processes going forward. The ILMA committed to doing this as part of our ongoing efforts to keep local governments informed.

Presentation Materials- Delegation Request forms and Supporting documentation **are due** to Corporate Administration Services for the agenda package by **9am on the Tuesday one full week before the meeting**. If you wish to include a PowerPoint presentation within the Board Agenda package, in order to provide an opportunity for the Board members to review the information prior to the Board meeting date, please submit it by 9am Tuesday, prior to the meeting. Alternately, a PowerPoint presentation may be made at the Board meeting, provided you have supplied it to the CSRD offices at least three days prior to the actual meeting (the Monday prior to the meeting).

To provide your presentation, please send it to:

Columbia Shuswap Regional District
 Attention: Deputy Manager of Corporate Administration
 via email: inquiries@csrd.bc.ca
 or to: PO Box 978, Salmon Arm BC V1E 4P1
 or via Fax: 250-832-3375

If you already have your presentation or supporting materials ready, please upload them here. (?)

For Office Use Only**Approval**

☐ Approved ☐ Declined ☐ Other

Appearance Date

Applicant informed of appearance date on

By

Date

Laura Schumi

From: Laura Schumi
Sent: Wednesday, January 02, 2019 3:07 PM
To: Laura Schumi
Subject: FW: Interior Lumber Manufacturers Association (ILMA) "Delegation Request", CONFIRMED FOR 10 AM THURSDAY January 10 2019 Board meeting - Email message to include with Delegation item


Importance: High

From: Lynda Shykora <LShykora@csrd.bc.ca>
Sent: December 14, 2018 11:11 AM
To: Brian Simpson <wildfire.simpson@outlook.com>
Cc: Laura Schumi <LSchumi@csrd.bc.ca>
Subject: FW: Interior Lumber Manufacturers Association (ILMA) "Delegation Request", CONFIRMED FOR 10 AM THURSDAY January 10 2019 Board meeting
Importance: High

Good morning, Brian,
 Thanks for the clarification that you have provided in regards to the intent of your Delegation appearance at the January 10, 2019 CSRD Board meeting.
 This email message confirms that your group is **Confirmed** as a Delegation for the meeting at 10 AM until 10:15 AM. For your information, there is a 2nd delegation scheduled for 10:15 AM.
 The Board meeting is held in the Board Room, CSRD office, 555 Harbourfront Drive, Salmon Arm, BC.
 A copy of your Powerpoint Presentation by Jan 2, 2019 would be greatly appreciated.
 We will send you a link to the January 10, 2019 Board meeting agenda once it is published (January 4, 2019).
 Regards,

Lynda Shykora | Deputy Manager
 Corporate Administration Services
Columbia Shuswap Regional District
 T: 250.833.5939 | F: 250.832.3375 | TF: 1.888.248.2773
 E: lshykora@csrd.bc.ca | W: www.csrd.bc.ca



 Please consider the environment before printing this e-mail

This e-mail is CONFIDENTIAL. If you are not the intended recipient, please notify me immediately and delete this communication, attachment or any copy. Thank you.

From: Lynda Shykora <LShykora@csrd.bc.ca>
Sent: December 13, 2018 10:18 AM
To: Brian Simpson <wildfire.simpson@outlook.com>
Subject: RE: Interior Lumber Manufacturers Association (ILMA) "Delegation Request", tentative January 10 2019 Board meeting, CSRD - PLEASE SUBMIT THE DELEGATION REQUEST ON A CSRD DELEGATION REQUEST FORM, link attached

Good morning, Brian,
 Your Delegation Request Form arrived at our office this morning.

Your request form indicates: Purpose of Presentation: Garner Local Government Support. What is your specific ask of the Board, please. NO specific ask for the board this time around. Our general objectives for these annual delegations to local government (5 regional boards) is first to better inform them on forestry issues that affect our ILMA mills in their areas of concern and second assuming better information provided garner their general support for issues that affect us going forward and in their own decision making processes.

The Comment section of the form indicates the Presentation is to inform the Board.

The delegation form also indicates that a letter or information must be submitted with the Delegation Form. There is no attachment or letter. Is your plan to stick to the 2 paragraph outline in the Comment section that talks about technical information on the THL base, land use, etc., and how it relates to the future of the forestry industry/ILMA businesses, economy, etc.. Perhaps you plan to show this in a Powerpoint, which if you are, the Powerpoint is needed by January 2, 2019 at the latest. We would then include the powerpoint with the agenda package. NO letter to be attached. We will be presenting a power point and will ensure you have this by the Jan. 2nd deadline as requested.

Also, previously mentioned, there is ability for you to take part in this meeting remotely, the Board will be able to see and hear you. Is that something you would like to pursue. It would accommodate better if there is more than 1 speaker from different locales. I will leave that part to you to consider. Thank you for the offer but we have discussed this in the past and determined it is best if we are there in person.

I will await your response and then should be able to confirm the Delegation for 15 minutes at the CSRD Board meeting in January.

Regards,

Lynda Shykora | Deputy Manager

Corporate Administration Services

Columbia Shuswap Regional District

T: 250.833.5939 | F: 250.832.3375 | TF: 1.888.248.2773

E: lshykora@csrd.bc.ca | W: www.csrd.bc.ca



Please consider the environment before printing this e-mail

This e-mail is CONFIDENTIAL. If you are not the intended recipient, please notify me immediately and delete this communication, attachment or any copy. Thank you.



**Interior Lumber
Manufacturers'
Association**

Access to the Land Base

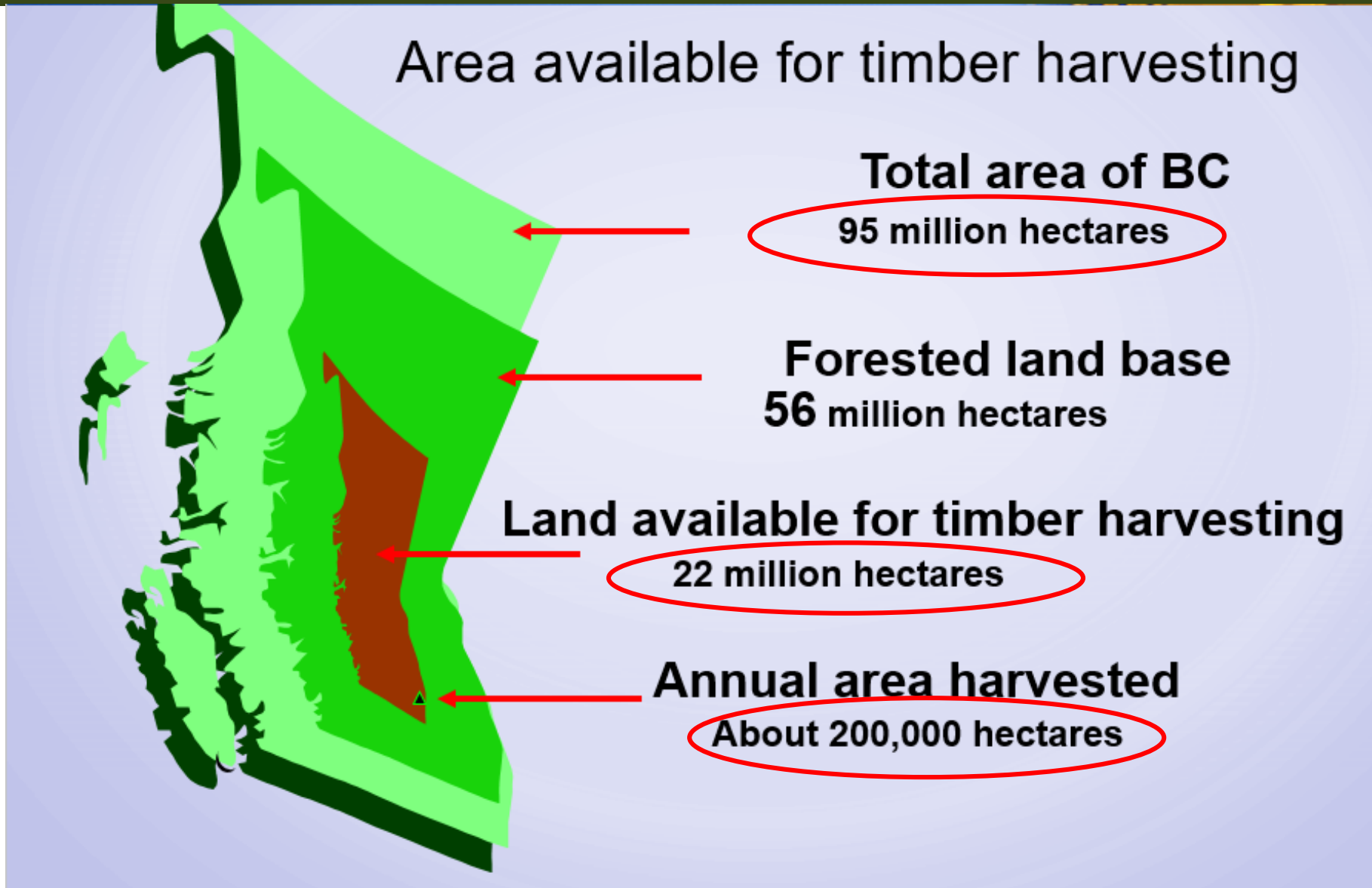
CSRD Board Meeting

Salmon Arm, BC

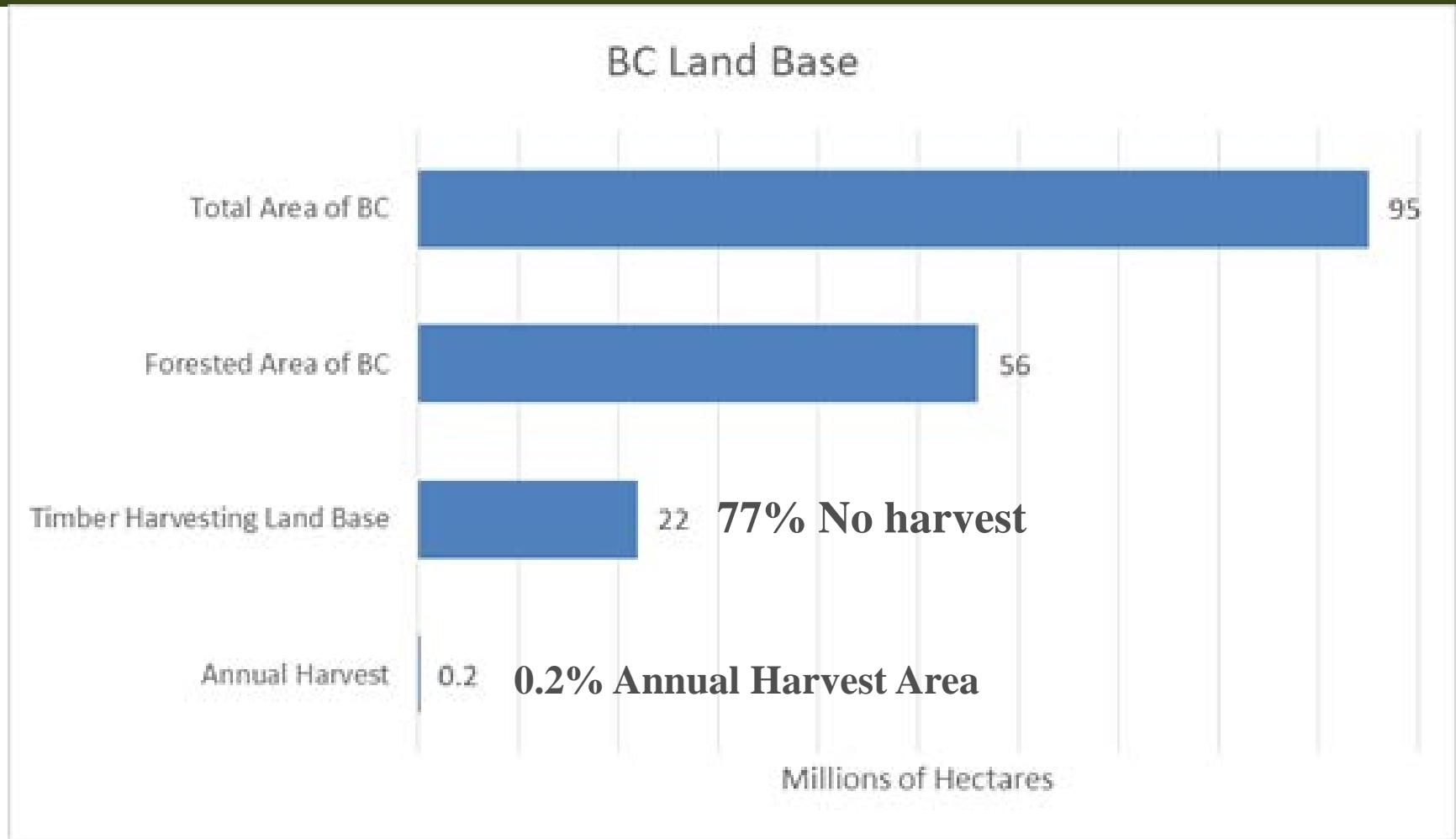
Jan 10, 2019



Timber Harvesting Land Base ... A Provincial Perspective



Timber Harvesting Land Base ... A Provincial Perspective

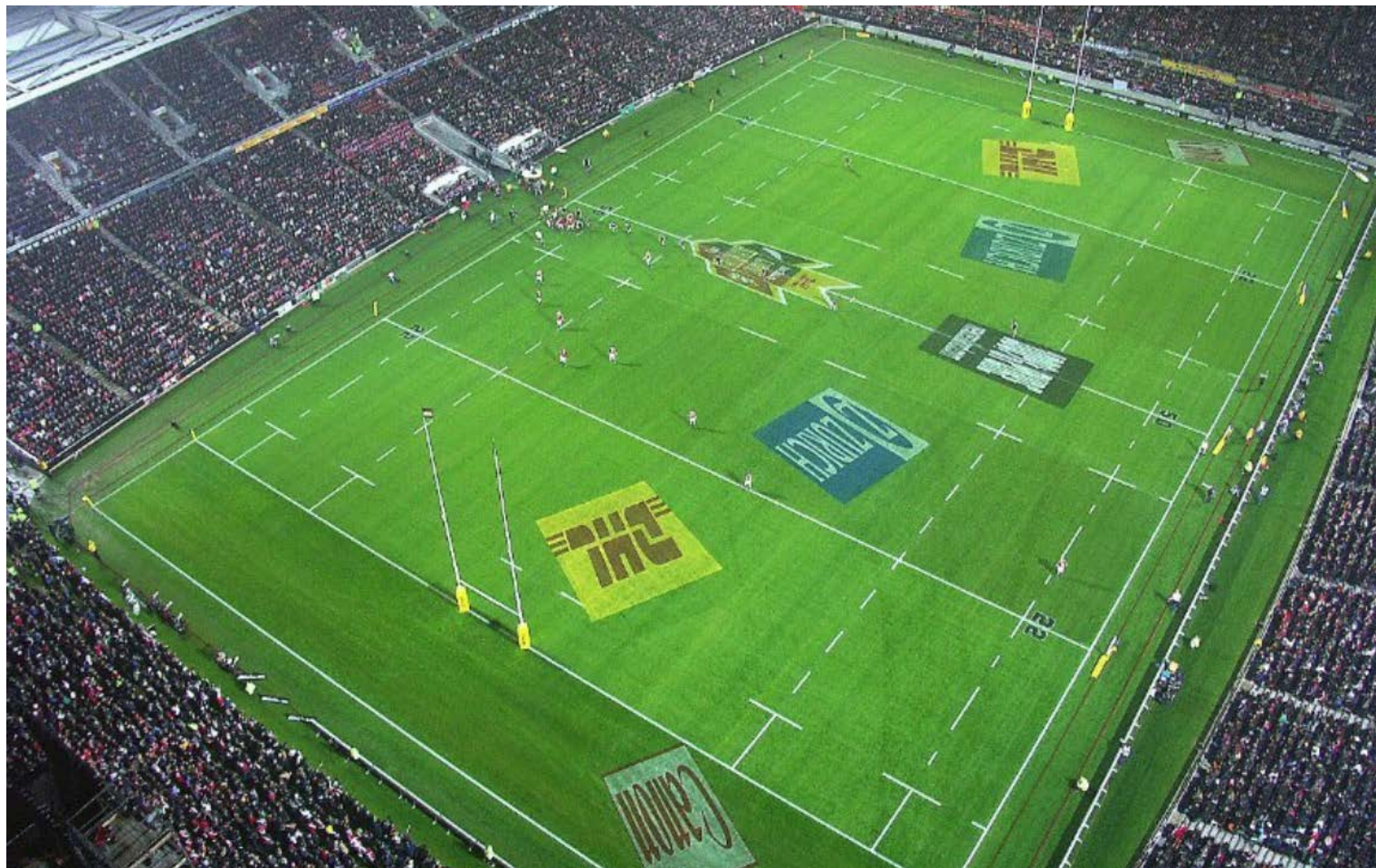


Timber Harvesting Land Base . . . A Provincial Perspective

- About 30 percent of BC is protected from harvest (Parks, Conservancies, Ecological Reserves, OGMAs etc.).
 - Totalling about 30 million hectares!
 - As big or bigger than Poland, Italy or New Zealand
- About 50 percent of BC has some leave of harvest restriction beyond that defined under the Forest Practices Act (including Community Watershed, Ungulate Winter Range, Visuals etc.).
 - Totalling about 48 million hectares!
 - Roughly the same size as Spain or Sweden



... For Some Perspective ... What's a Hectare?



1 ha.?

100mx100m

**1 Rugby
Field**

**1/4 section of
land is 64ha**



**Interior Lumber
Manufacturers'
Association**

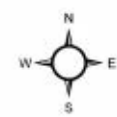
MANAGEMENT UNIT MAP TREE FARM LICENCE (TFL), TIMBER SUPPLY AREA (TSA), REGIONS AND DISTRICTS LOCATION MAP

Updated January, 2014

TREE FARM LICENCES

1. Coast Timber Resources Limited Partnership
2. International Forest Products Ltd.
3. Western Forest Products Inc.
4. International Forest Products Limited
5. Tembec Industries Ltd.
6. Canadian Forest Products Ltd.
7. Western Forest Products Inc.
8. International Forest Products Ltd.
9. Western Forest Products Inc.
10. The Corporation of the District of Mission
11. Canadian Forest Products Ltd.
12. Canoe Forest Products Limited
13. West Fraser Timber Ltd.
14. Western Forest Products Inc.
15. Northwest Squamish Forestry Limited Partnership
16. Western Forest Products Inc.
17. Sevenside Sawmills Ltd.
18. Kruger Products Limited Partnership
19. Western Forest Products Limited
20. International Forest Products Limited
21. Teak Cedar Products Ltd.
22. Teak Cedar Products Ltd.
23. Teak Cedar Products Ltd.
24. Teak Cedar Products Ltd.
25. Teak Cedar Products Ltd.
26. Teak Cedar Products Ltd.
27. Teak Cedar Products Ltd.
28. Teak Cedar Products Ltd.
29. Teak Cedar Products Ltd.
30. Teak Cedar Products Ltd.
31. Teak Cedar Products Ltd.
32. Teak Cedar Products Ltd.
33. Teak Cedar Products Ltd.
34. Teak Cedar Products Ltd.
35. Teak Cedar Products Ltd.
36. Teak Cedar Products Ltd.
37. Teak Cedar Products Ltd.
38. Teak Cedar Products Ltd.
39. Teak Cedar Products Ltd.
40. Teak Cedar Products Ltd.
41. Teak Cedar Products Ltd.
42. Teak Cedar Products Ltd.
43. Teak Cedar Products Ltd.
44. Teak Cedar Products Ltd.
45. Teak Cedar Products Ltd.
46. Teak Cedar Products Ltd.
47. Teak Cedar Products Ltd.
48. Teak Cedar Products Ltd.
49. Teak Cedar Products Ltd.
50. Teak Cedar Products Ltd.
51. Teak Cedar Products Ltd.
52. Teak Cedar Products Ltd.
53. Teak Cedar Products Ltd.
54. Teak Cedar Products Ltd.
55. Teak Cedar Products Ltd.
56. Teak Cedar Products Ltd.
57. Teak Cedar Products Ltd.
58. Teak Cedar Products Ltd.
59. Teak Cedar Products Ltd.
60. Teak Cedar Products Ltd.
61. Teak Cedar Products Ltd.

This map is to be used only as a guide to the general location of the Tree Farm Licences.
For more detailed information, contact Ministry of Forests, Lands and Natural Resource Operations.
Forest Tenure Branch at 1 (800) 367-8888.



Regions and Districts

- Skeena Region**
 - Skeena Delta District
 - Robson District
 - North Coast District
 - Nelson District
- Northwest Region**
 - Port Nelson District
 - Peace District
- Omineca Region**
 - Port St. James District
 - Macmillan District
 - Prince George District
 - Vanderhoof District
 - Heathcote District
- Cariboo Region**
 - 100 Mile House District
 - Quesnel District
 - Central Cariboo District
 - Chilworth District
- West Coast Region**
 - South Island District
 - North Island - Central Coast District
 - Campbell River District
 - Walla Walla District
- South Coast Region**
 - Strathcona District
 - Squamish District
 - Chilliwack District
- Thompson/Okanagan Region**
 - Carleton Place District
 - Kamloops District
 - Okanagan - Shuswap District
 - West Kelowna District
- Kootenay/Boundary Region**
 - Rocky Mountain District
 - Kootenay Lake District
 - Colombia District
 - Arrow Boundary District

- ☆ Forests, Lands & Resource Ops. Regional Office
- Coastal/Interior Appraisal Line
- F.L.N.R.O. Area Boundaries
- Districts
- Timber Supply Areas
- Cascade TSA
- Pacific TSA
- Parks & Protected Areas
- Treaty Lands

0 20 40 60 80 100 120 140 160
Kilometers



Revelstoke TSA

Revelstoke TSA

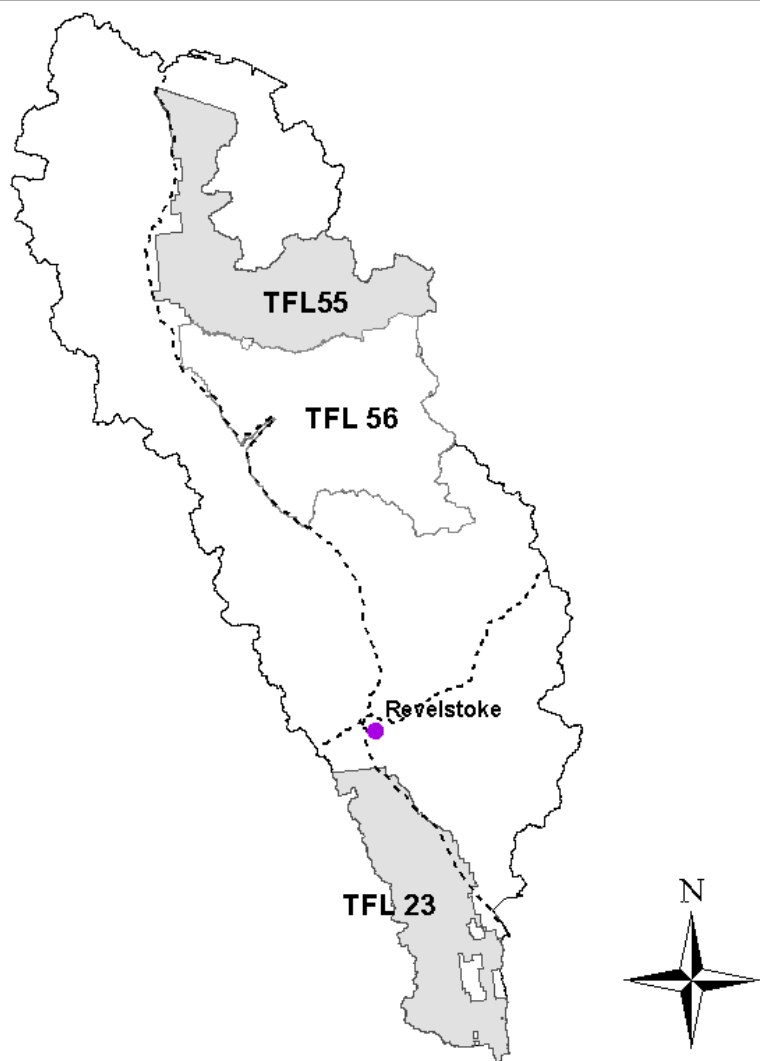
(60 km x 200 km)

Gross Area: 833,445 ha

Less: TFL 55 and TFL 23

Remaining Area: 669,263 ha

Supporting an annual harvest of
Approx. 315,000m³



Interior Lumber
Manufacturers'
Association

... Removing Non-Crown Land ...

Revelstoke TSA

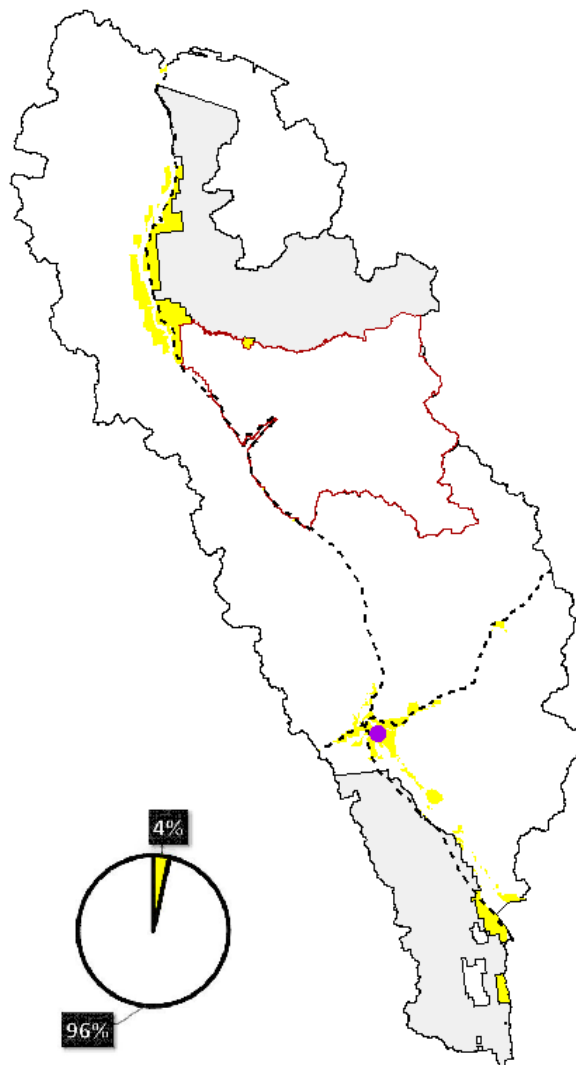
Gross Area: 669,263 ha

**Less: Non-Crown Land
(23,433 ha)**

Remaining Area: 645,830 ha

Legend

- Non-Crown
- Remaining



**Interior Lumber
Manufacturers'
Association**

... Removing Non-Productive/Non-Forest

Revelstoke TSA

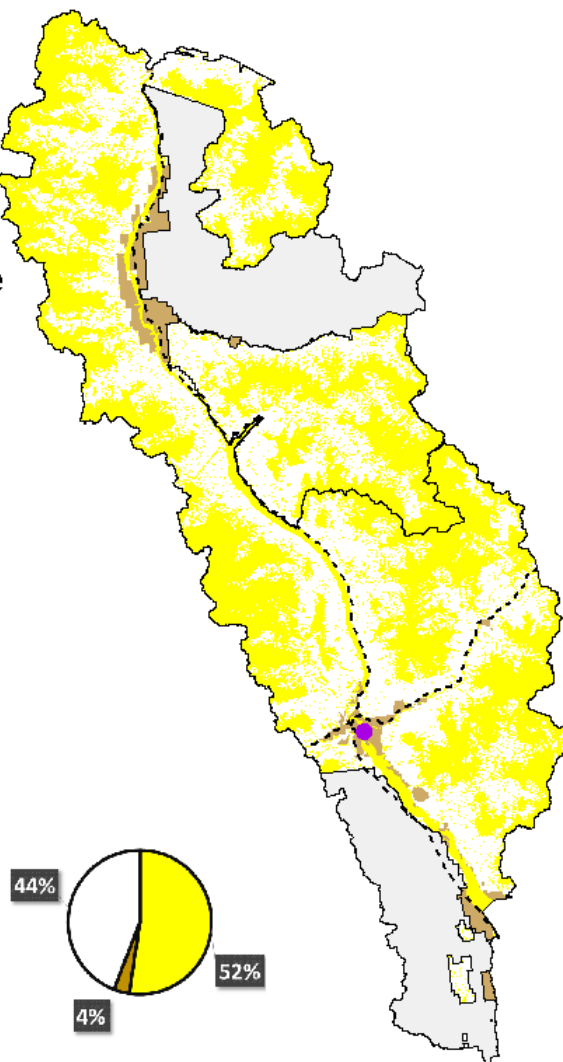
Gross Area: 669,263 ha

Less: Non-forest / Non-productive
(350,481 ha)

Remaining Area: 295,350 ha

Legend

- Non-forest / Non-productive
- Previous Removals
- Remaining



Interior Lumber
Manufacturers'
Association

... Further Removal ...

Revelstoke TSA

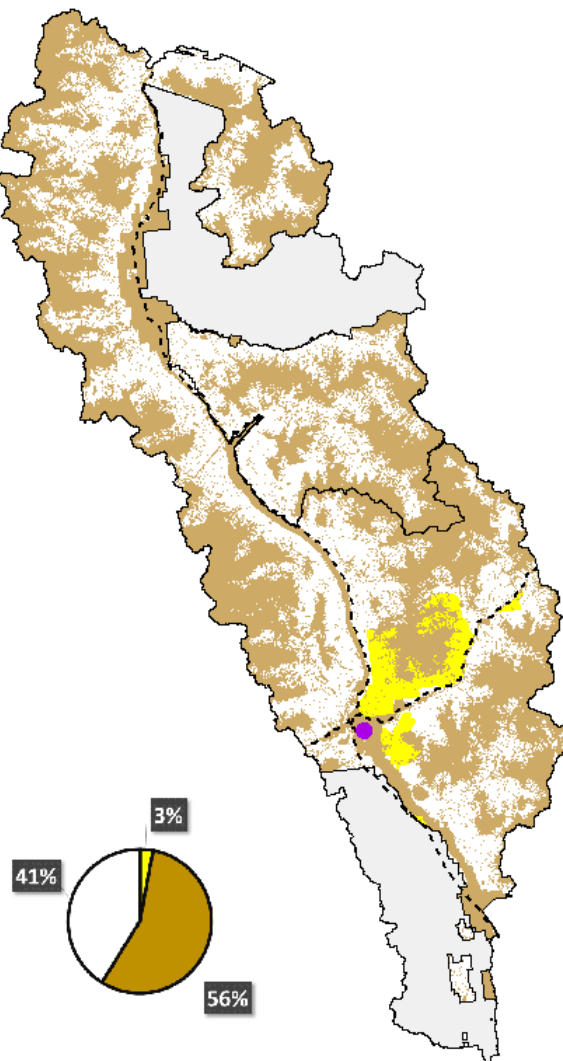
Gross Area: 669,263 ha

**Less: Parks & Protected Areas
(19,945 ha)**

Remaining Area: 275,405 ha

Legend

-  Parks & Protected Areas
-  Previous Removals
-  Remaining



Interior Lumber
Manufacturers'
Association

... For Removal ...

Revelstoke TSA

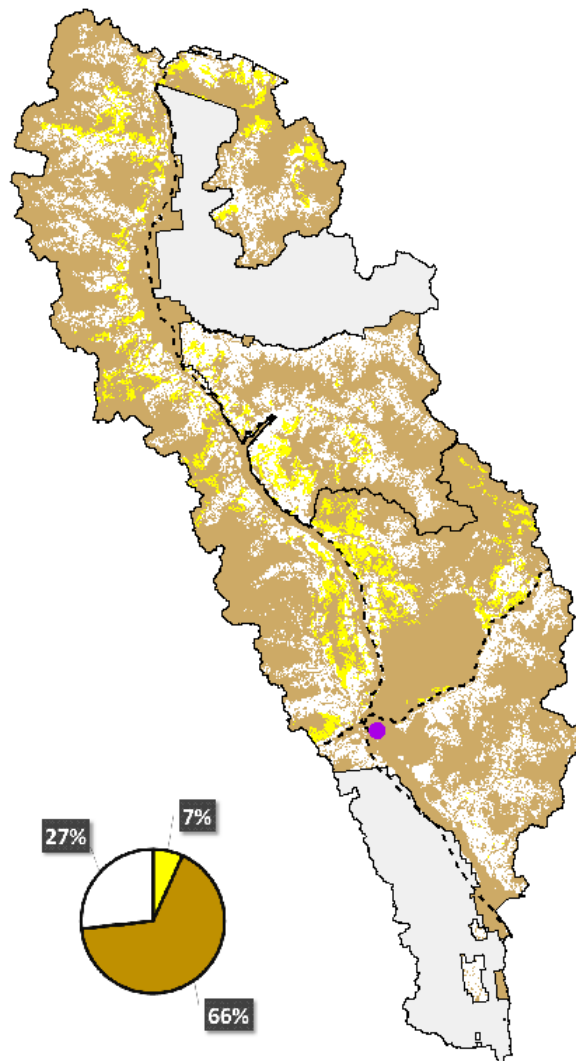
Gross Area: 669,263 ha

**Less: Areas reserved for Wildlife
(45,381 ha)**

Remaining Area: 178,233 ha

Legend

- Wildlife Management
- Previous Removals
- Remaining



Interior Lumber
Manufacturers'
Association

... Further Removal ...

Revelstoke TSA

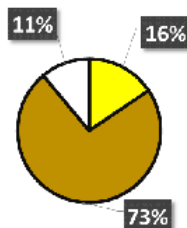
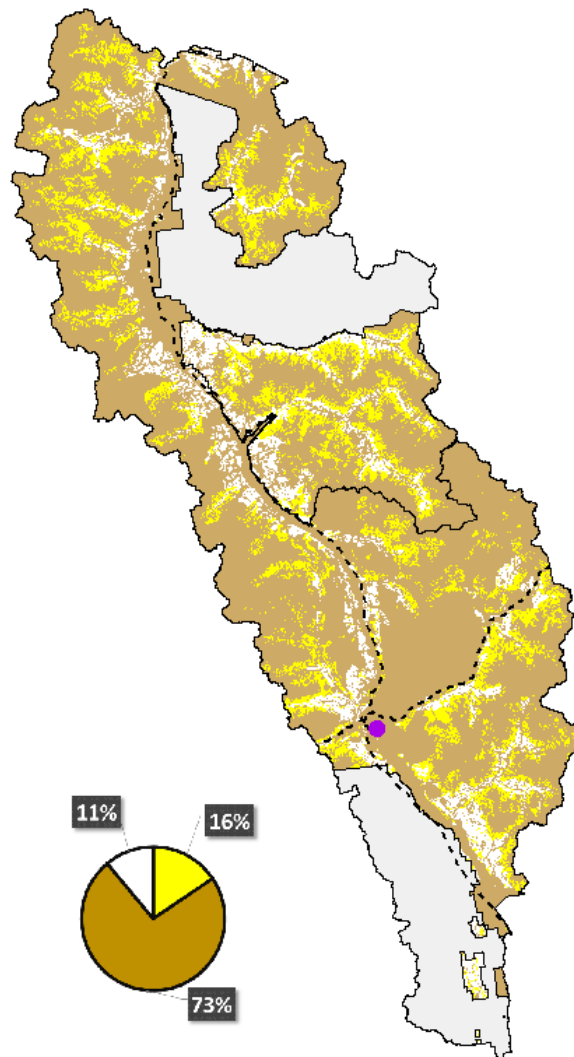
Gross Area: 669,263 ha

Less: Inoperable forest
(104,060 ha)

Remaining Area: 74,173 ha

Legend

- Inoperable forest
- Previous Removals
- Remaining THLB



Interior Lumber
Manufacturers'
Association

... Further Constraints ...

Revelstoke TSA

Gross Area: 669,263 ha

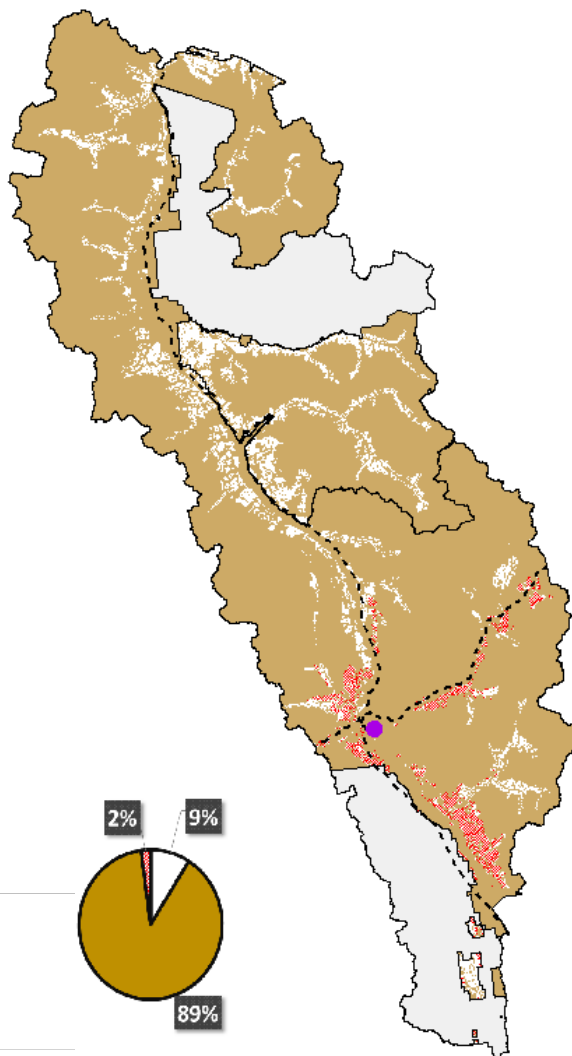
Less: CWS & VQO & UWR
Constrained Areas
(14,374 ha)

Remaining Area: 59,799 ha

Legend

- CWS & VQO & UWR
- Unconstrained THLB
- Non-THLB

Total THLB 74,173ha
Further Constraints 14,374ha
Remaining THLB 59,799ha



Interior Lumber
Manufacturers'
Association

... Annual Operating Footprint ...

Revelstoke TSA

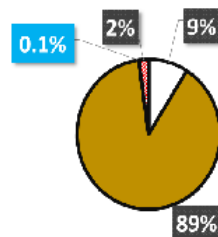
Gross Area: 669,263 ha

Annual Logged Area : 900 ha
(0.1% of the Gross Area)
(1.2% of the THLB)

Legend

- Annual Logged Area
- CWS & VQO & UWR
- Unconstrained THLB
- Non-THLB

Total THLB 74,173ha
Further Constraints 14,374ha
Remaining THLB 59,799ha



**Interior Lumber
Manufacturers'
Association**

... Further Potential Land Base Removal ...


Revelstoke TSA

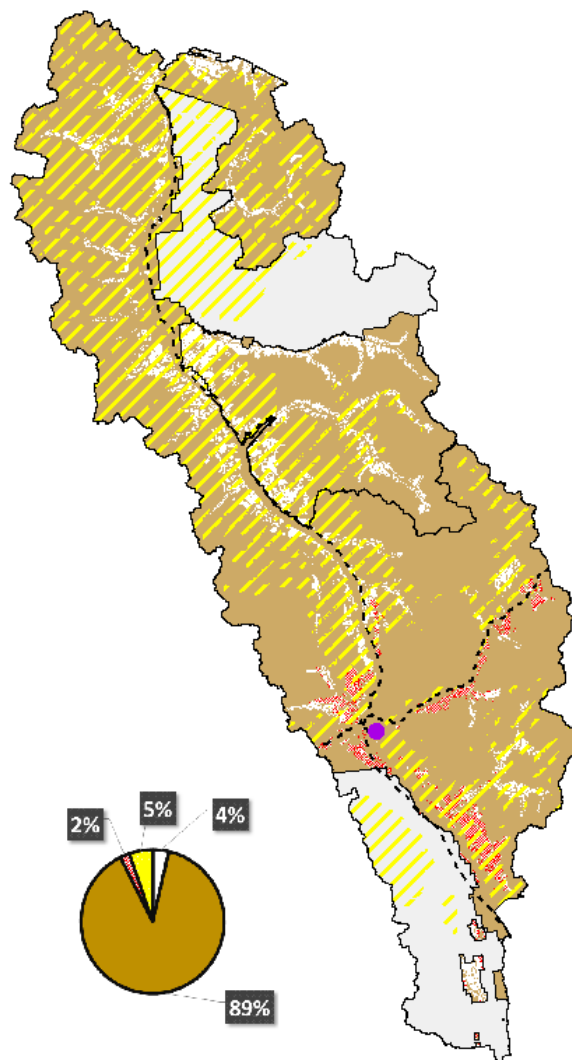
Gross Area: 669,263 ha

**Less: Potential New Federal
Caribou Habitat
(35,370 ha)**

Remaining Area: 24,429 ha

Legend

-  Potential New Federal Caribou Habitat
-  CWS & VQO & UWR
-  Unconstrained THLB
-  Non-THLB



Interior Lumber
Manufacturers'
Association

... Proposed NEW Critical Habitat for Caribou. . .



Interior Lumber
Manufacturers'
Association

... For Perspective ...

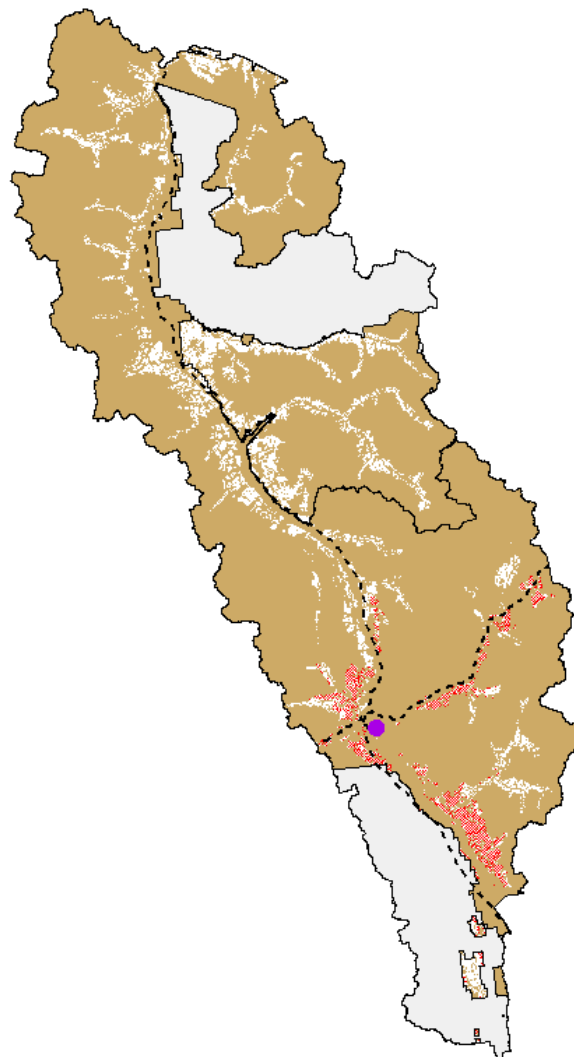
Revelstoke TSA

Gross Area: 669,263 ha



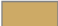
Total THLB 74,173ha

Further Constraints 14,374ha

Remaining THLB 59,799ha



Legend

-  CWS & VGO & UWR
-  THLB
-  Non-THLB



Interior Lumber
Manufacturers'
Association

- **This area supports about 315,000m³/year.**
 - **The 2017 wildfire season burned over 34Mm³ of THLB which is over 100 times the annual volume available in the Revelstoke area reported here.**
 - **We harvest 1/10 or one percent of the entire land base.**
- **The amount of land outside of the timber harvesting land base in this one TSA is 595,000ha. Larger than Wells Gray Provincial Park (542,000ha) or Glacier National Park (135,000ha) or Kootenay National Park (141,000ha.)**
- **There are total of 1,043 parks and protected areas in BC including the 7 national parks totalling 14.7 million hectares or 15% of all lands in the province.**
 - **Parks alone in BC are larger than the entire country of Nepal, Greece, Nicaragua or North Korea as examples.**
- **30 million hectares or 30% of the province that is restricted from harvest.**
- **47 million hectares were there is some level of harvest restriction.**
- **Annual harvest foot print in BC**
 - **0.2% or BC**
 - **0.4% of Forested Land**
 - **0.9% of the Timber Harvesting Land Base**



- **For every hectare of land that is removed from the timber harvesting land base there is a negative economical impact.**
- **Rural Communities are at the greatest risk. Once land is removed and economical activities stop, it won't come back.**
- **Stay informed on issues affecting the working forest and pay close attention to further withdrawals.**
- **Remember the businesses, your neighbor, your brother, your grandfather that have operating safely and sustainably in these forests for decades.**
- **There needs to be a viable working forest to continue to generate economic activities and services that we need in BC!**



Thank-you

Supporting the Working Forest is Critical
to sustain family supporting jobs, economic
prosperity and communities that depend on
this renewable resource.

www.ILMA.com or info@ilma.com

Dan Battistella – President

INTERIOR LUMBER MANUFACTURERS' ASSOCIATION

PO Box 3005, Kamloops, BC, V2C 6B7
250-319-4119 (c)



Interior Lumber
Manufacturers'
Association

Delegation Request Form



Appearing Before the Board as a Delegation

Instructions and Information

Board meetings are generally held on the third Thursday of each month. Please refer to the calendar on the [CSRD's website](#) for the actual dates, or contact the CSRD offices at 250-832-8194 for the upcoming Board Meeting dates.

Delegations are limited to three (3) per meeting; slots often book up quickly.

Delegations are permitted up to fifteen (15) minutes for their presentation. Board members may ask questions after the presentation for clarification.

In order to schedule a date to appear before the Board, delegations must provide the information on the attached form. This information will be included in the agenda. By providing this detail it clarifies the purpose of the delegation for the Board and allows Board members and staff to become familiar with your topic and to obtain any necessary background information.

Your contact information will be included with your delegation information and circulated to the Board. If you do not wish your address to be included in the public agenda, please advise Corporate Administration Services at the time your Delegation request is submitted.

Contact Information

Name of Person or Organization *

Lindsay Forsman-Phillips, CAREX Canada; Micky Leung, Health Canada; Chantal Wilson, Little Bear Engineering

Contact Information Provided * (?)

☒ Phone Number ☒ Email Address ☐ Mailing Address

Phone Number *

6043744088

Email Address *

lindsay@carexcanada.ca

If your application is approved, it will be included on the Board meeting agenda. Do you consent to your personal information being included on the Board Agenda? *

☒ Yes ☐ No

Presentation Information

Topic of discussion *

Radon exposure: Interior region of BC

Purpose of Presentation *

Note: A letter outlining the Request or the Information must accompany the Delegation Request form.

- ☒ Information Only
☐ Requesting Support
☐ Requesting Funding
☐ Other

Meeting Date Requested * (?)

10-Jan-19

Alternate Date Requested (?)**Comments**

I've attached some supplementary information for review, as part of our request. We will submit presentation materials by the due date noted below. We are also requesting that we present remotely.

Presentation Materials- Delegation Request forms and Supporting documentation **are due** to Corporate Administration Services for the agenda package by **9am on the Tuesday one full week before the meeting**. If you wish to include a PowerPoint presentation within the Board Agenda package, in order to provide an opportunity for the Board members to review the information prior to the Board meeting date, please submit it by 9am Tuesday, prior to the meeting. Alternately, a PowerPoint presentation may be made at the Board meeting, provided you have supplied it to the CSRD offices at least three days prior to the actual meeting (the Monday prior to the meeting).

To provide your presentation, please send it to:

Columbia Shuswap Regional District
Attention: Deputy Manager of Corporate Administration
via email: inquiries@csrd.bc.ca
or to: PO Box 978, Salmon Arm BC V1E 4P1
or via Fax: 250-832-3375

If you already have your presentation or supporting materials ready, please upload them here. (?)

Radon exposure in the Interior Region of BC - Delegation Information 154.49KB
Jan 10-16.docx

For Office Use Only

Approval

☐ Approved ☐ Declined ☐ Other

Appearance Date

Applicant informed of appearance date on

By

Date

Radon Exposure in the Interior Region of BC

Presenter's names:

Micky Leung, Regional Radiation Specialist, Health Canada
 Lindsay Forsman-Phillips, Project Manager, CAREX Canada
 Chantal Wilson, Owner, Little Bear Engineering

Title of Presentation:

Radon exposure in the Interior Region of BC

Other Details:

Key messages

- Radon is a tasteless, colourless, odourless radioactive gas
- Radon is produced from the breakdown of uranium, which is naturally found in rock and soil in Canada
- Health effects of radon exposure: radon causes lung cancer – 2nd leading cause of lung cancer (radon is attributed to 16% of lung cancer deaths)
- Radon exposure is preventable, but testing is needed to know if it's in homes, schools and other buildings
- High radon levels can be fixed. The cost associated to radon mitigation is similar to the cost of other home maintenance, such as installing a new furnace or central air conditioner

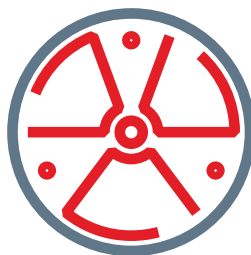
Radon is a tasteless, colourless, and odourless gas produced by the decay of uranium naturally present in rock and soil in Canada. Outdoors, radon levels are generally low; however, radon can enter buildings and homes through cracks and openings in foundations, making levels indoors much higher, especially in basements and lower floors. Radon gas emits alpha radiation, which damages cells in the lungs when inhaled.¹

Radon is known to cause lung cancer in humans,² as recognized by agencies including Health Canada, the International Agency for Research on Cancer (IARC), the World Health Organization (WHO), among others. CAREX Canada's risk estimates for environmental carcinogens prioritize radon as the most significant indoor air exposure for cancer.³ After smoking, Health Canada lists radon as the second leading cause of lung cancer, and the first for non-smokers; it is responsible for approximately 16% of lung cancer deaths in Canada.⁴

Lung cancer from radon is preventable as there are ways to remove radon from – or prevent entry into – indoor air environments (i.e. homes, schools, buildings). However, the only way to know if radon is present is to test. Many safe and reliable options exist for testing, including purchasing low-cost kits or hiring certified professionals through [Canadian - National Radon Proficiency Program](#) (C-NRPP).⁵

1. ATSDR. [Toxicological Profile for Radon](#) (2015) (PDF)
2. International Agency for Research Cancer. [IARC monograph summary, Volume 78](#) (2001) (PDF)
3. Setton E. et al. ["Risk-based indicators of Canadians' exposures to environmental carcinogens."](#) Environ Health 2013;12(1):15.
4. Health Canada. [What are the health effects of radon?](#) (2012)
5. Canadian – National Radon Proficiency Program. [C-NRPP](#) (2017)

Radon exposure: Interior Region of BC



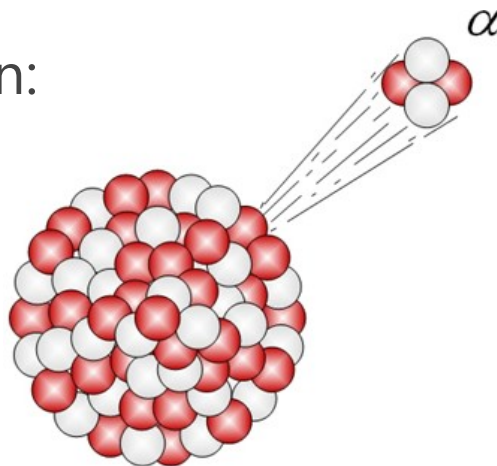
Lindsay Forsman-Phillips, BKin
Project Manager, CAREX Canada

Micky Leung, C.P.H.I. (C)
Regional Radiation Specialist, Health Canada

Chantal Wilson, P.Eng
Owner, Little Bear Engineering

What is radon?

- Invisible, odourless, colourless **radioactive** gas
- Natural decay product of uranium in rocks and soil
 - Canada is a uranium rich country
- **Gas phase (important for mobility through soil)**
- Radon breaks down:
 - Particles
 - Radiation

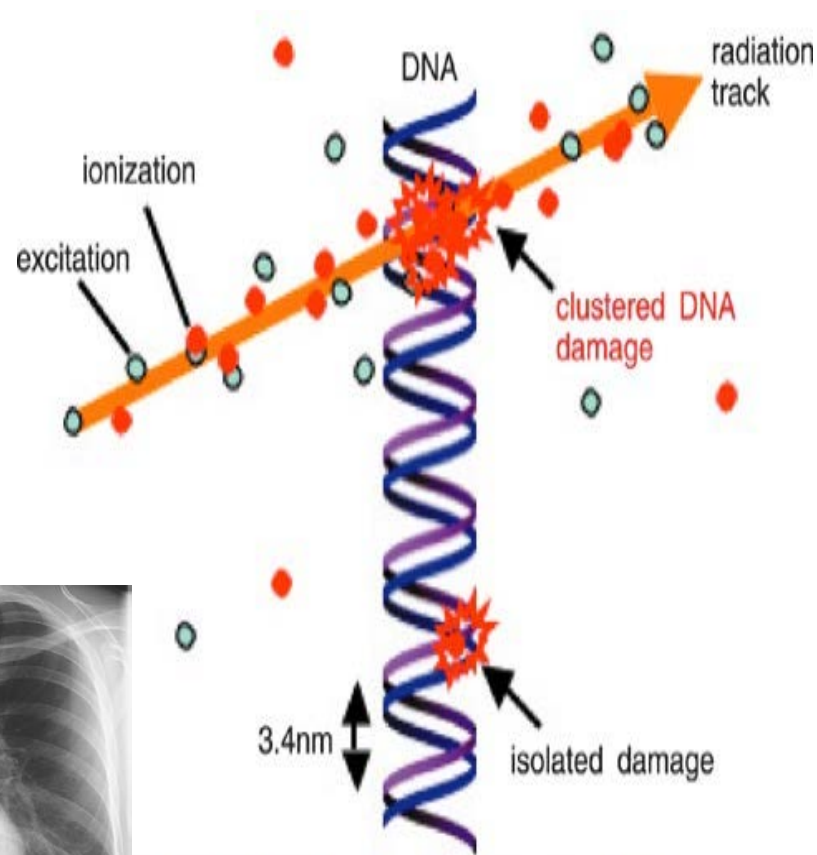


URANIUM 238 (U238) RADIOACTIVE DECAY		
type of radiation	nuclide	half-life
α	uranium—238	4.5 x10 ⁹ years
	↓	
β	thorium—234	24.5 days
	↓	
β	protactinium—234	1.14 minutes
	↓	
α	uranium—234	2.33 x10 ⁵ years
	↓	
α	thorium—230	8.3 x10 ⁴ years
	↓	
α	radium—226	1590 years
	↓	
α	radon—222	3.825 days
	↓	
α	polonium—218	3.05 minutes
	↓	
β	lead—214	26.8 minutes
	↓	
β	bismuth—214	19.7 minutes
	↓	
α	polonium—214	1.5 x10 ⁻⁴ seconds
	↓	
β	lead—210	22 years
	↓	
β	bismuth—210	5 days
	↓	
α	polonium—210	140 days
	↓	
α	lead—206	stable

Radiation and DNA damage

- Alpha radiation is powerful, but over a short distance
- In the lung and respiratory track, the alpha radiation “rips through” DNA bonds
- This type of clustered damage is more difficult to repair properly than other forms of DNA damage

**↑ DNA damage = ↑ error =
genetic mutation = cancer**



Radon can cause lung cancer

- Radon is the leading cause of lung cancer in non-smokers
- Radon is the 2nd leading cause of lung cancer in Canada (16%)
- Lung cancer is one of the most commonly diagnosed cancer (28,600 new cases in 2017)
- Lung cancer is the leading cause of cancer death in Canada
 - Health Canada estimates radon causes 3,200 lung cancer deaths

Nearly **1 in 2 Canadians**
will be diagnosed with cancer

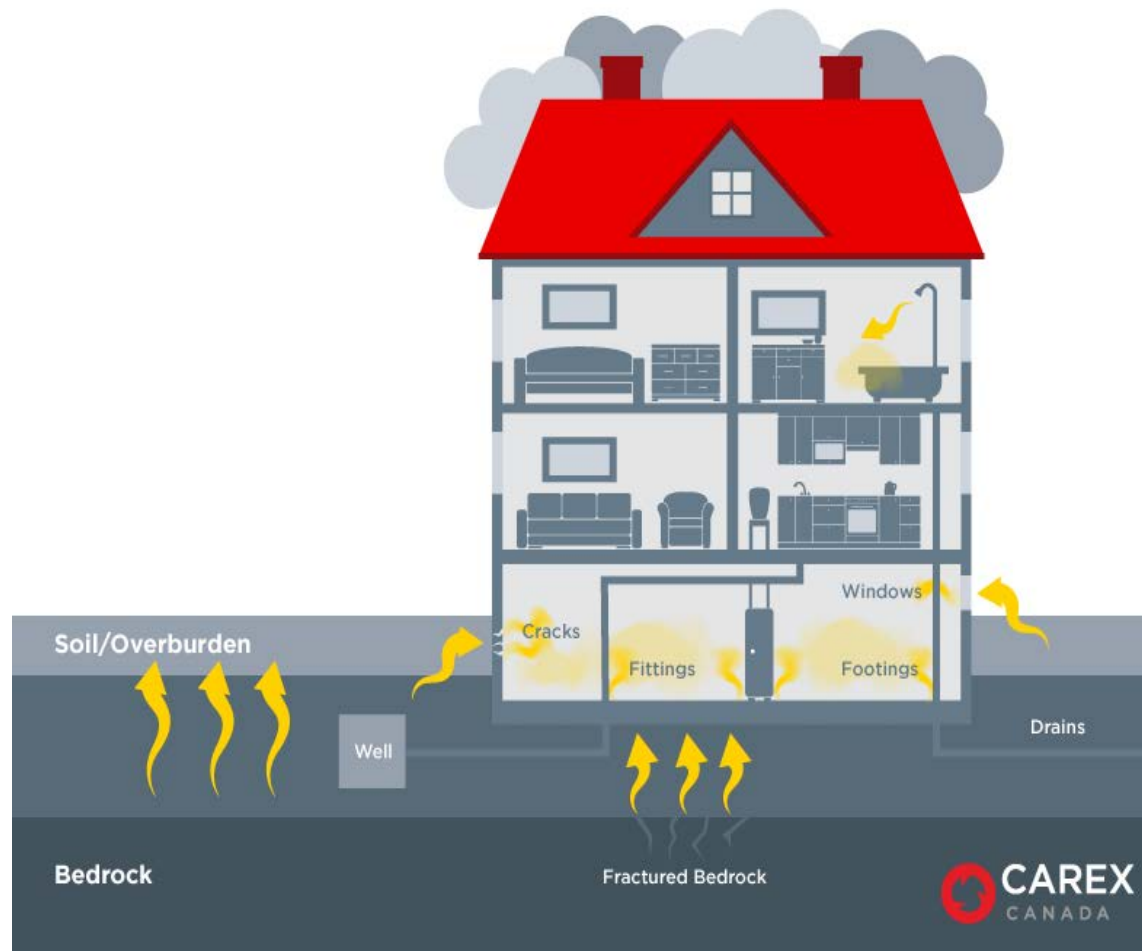


About **1 in 4 Canadians**
is expected to die from cancer



How are people exposed to radon?

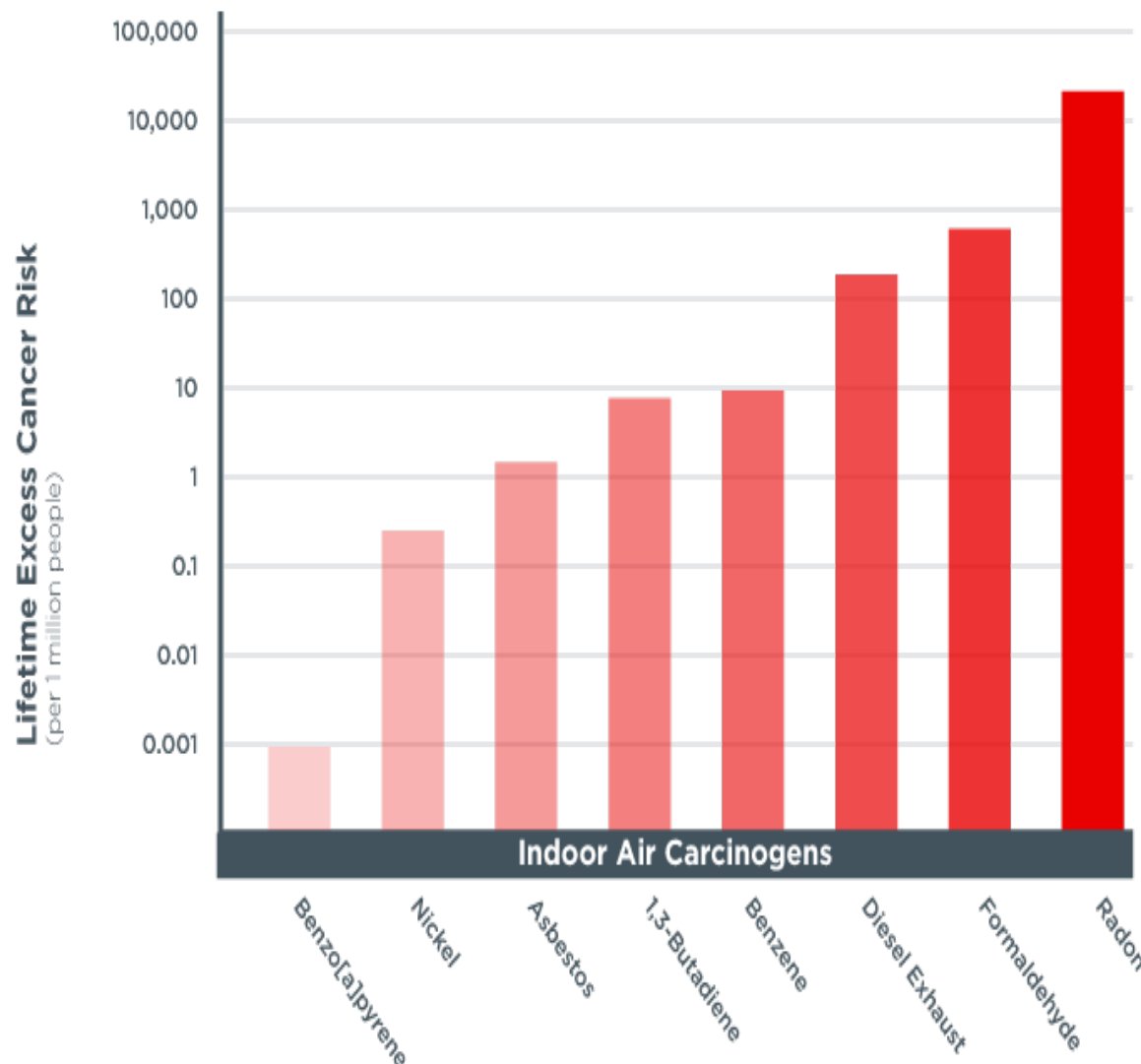
- Radon can easily move through soil and enter buildings through cracks and openings in the building's foundation
- It is drawn into buildings through pressure differential between the ground and indoors
- Once inside radon can build up to dangerous levels



CAREX Indoor Air Exposure Assessment

Radon identified as the highest priority exposure for cancer prevention

Excess of ~12,000 cancer cases per million exposed over a lifetime



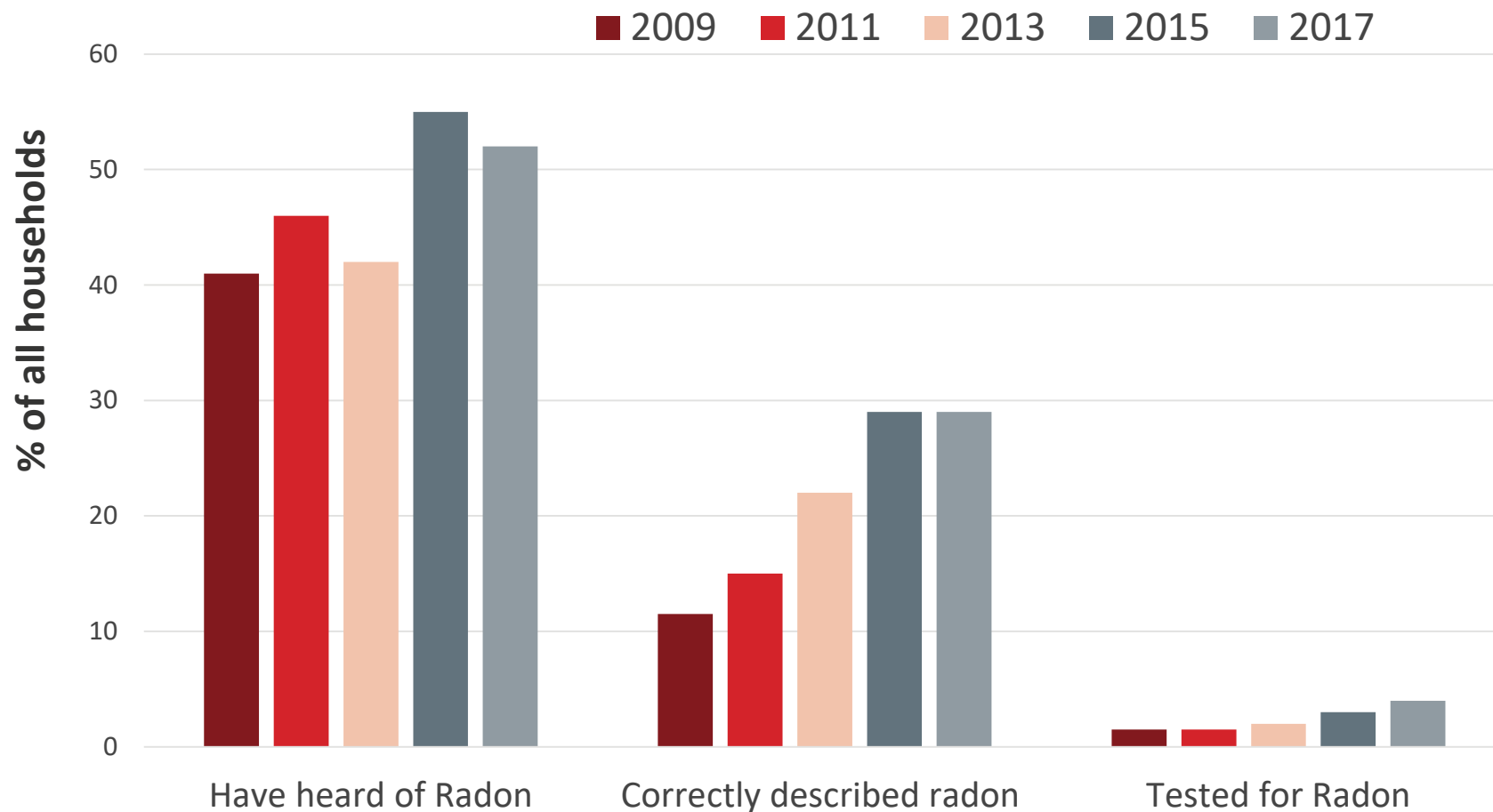
CAREX Canada risk estimates for indoor air carcinogens show that radon gas is the highest priority exposure in Canadian settings.

Setton E, et al. "Risk-based indicators of Canadians' exposures to environmental carcinogens." *Environ Health* 2013;12(1):15.

Households and Environment Survey (HES) – Statistics Canada

Page 34 of 72

BC – Knowledge of radon and testing, 2017



Federal radon guidelines

Revised guideline introduced in 2007:

“Remedial measures should be undertaken in a dwelling whenever the average annual radon concentration exceeds 200 Bq/m³ in the normal occupancy area”

- “dwelling” = homes, buildings with a high public occupancy rate, such as schools, hospitals, long-term care residences, and correctional facilities
- Normal occupancy = occupied for greater than 4 hours per day



200 - 600 Bq/m³
fix your home
within 2 years



Above 600 Bq/m³
fix your home
within 1 year

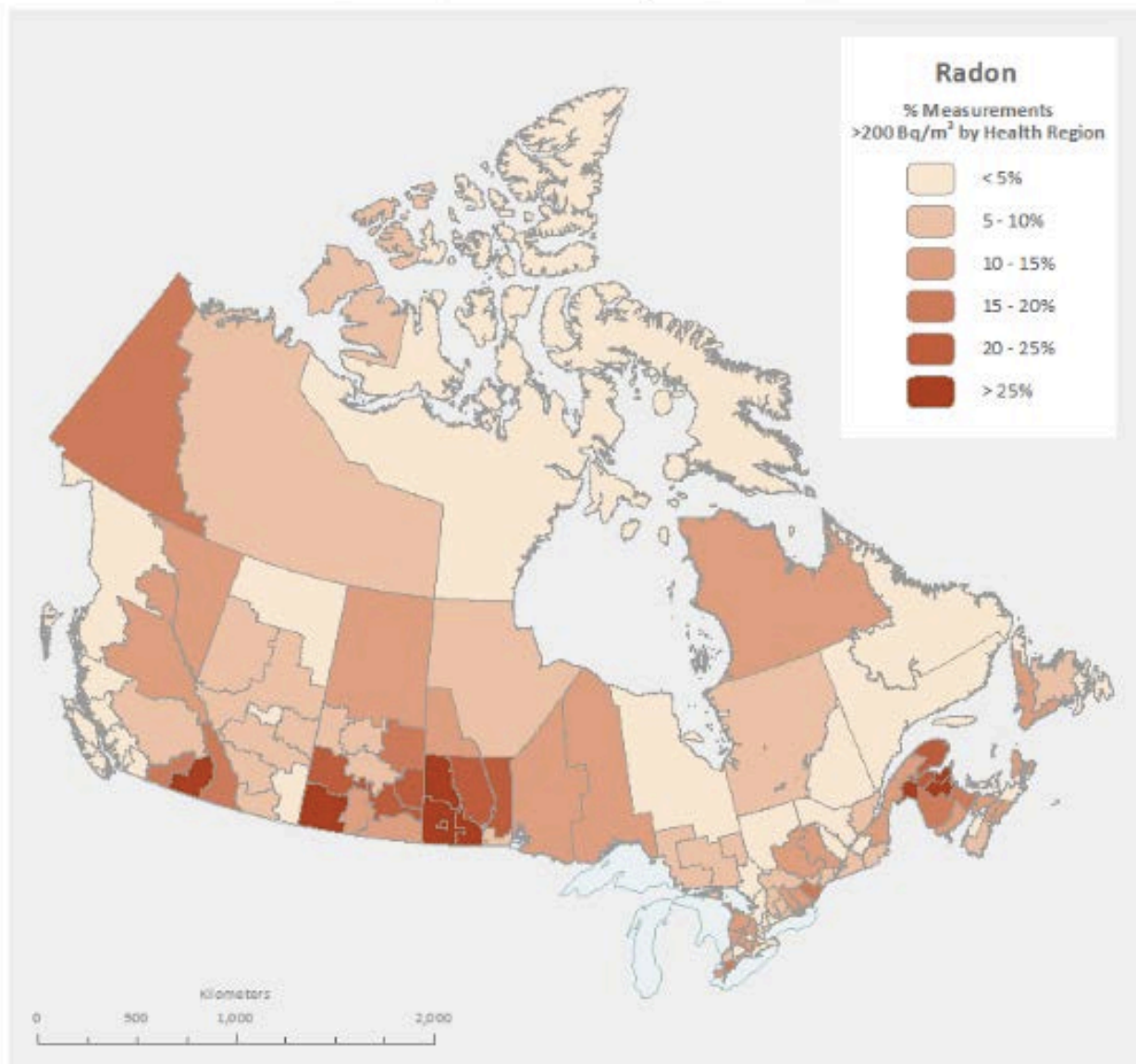
Radon levels in homes varies across the country

Percent of Measurements Above 200 Bq/m³ by Health Region

The survey revealed that:

- 6.9% of homes tested had indoor radon levels above the Canadian guideline 200 Bq/m³
- Most prevalent in Saskatchewan, Manitoba, New Brunswick & the Yukon

2009-2011 Cross Canada Radon Survey - Phase 1 & 2 Results

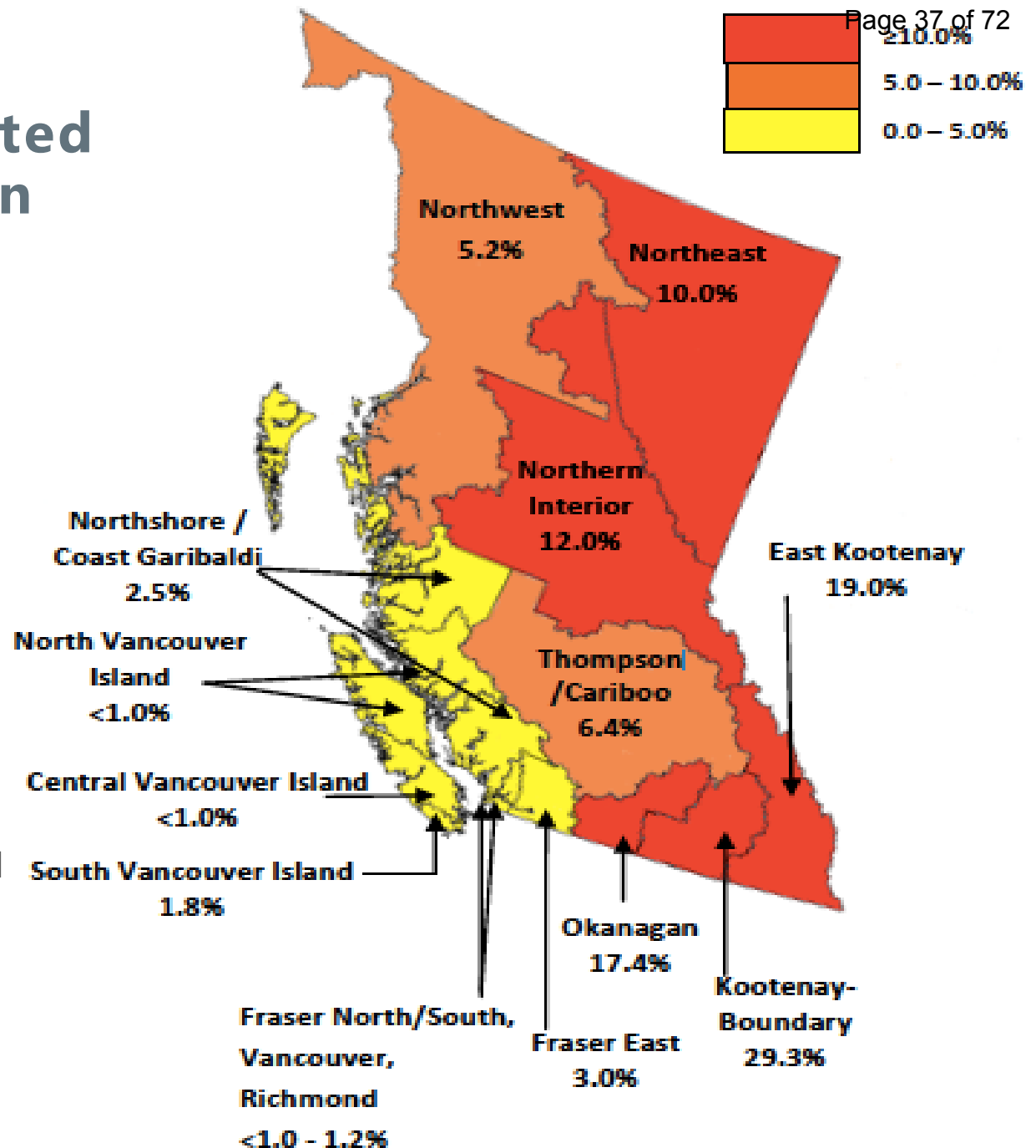


Homes that tested above the radon guideline in BC

Percent of Measurements Above 200 Bq/m³

The survey revealed that:

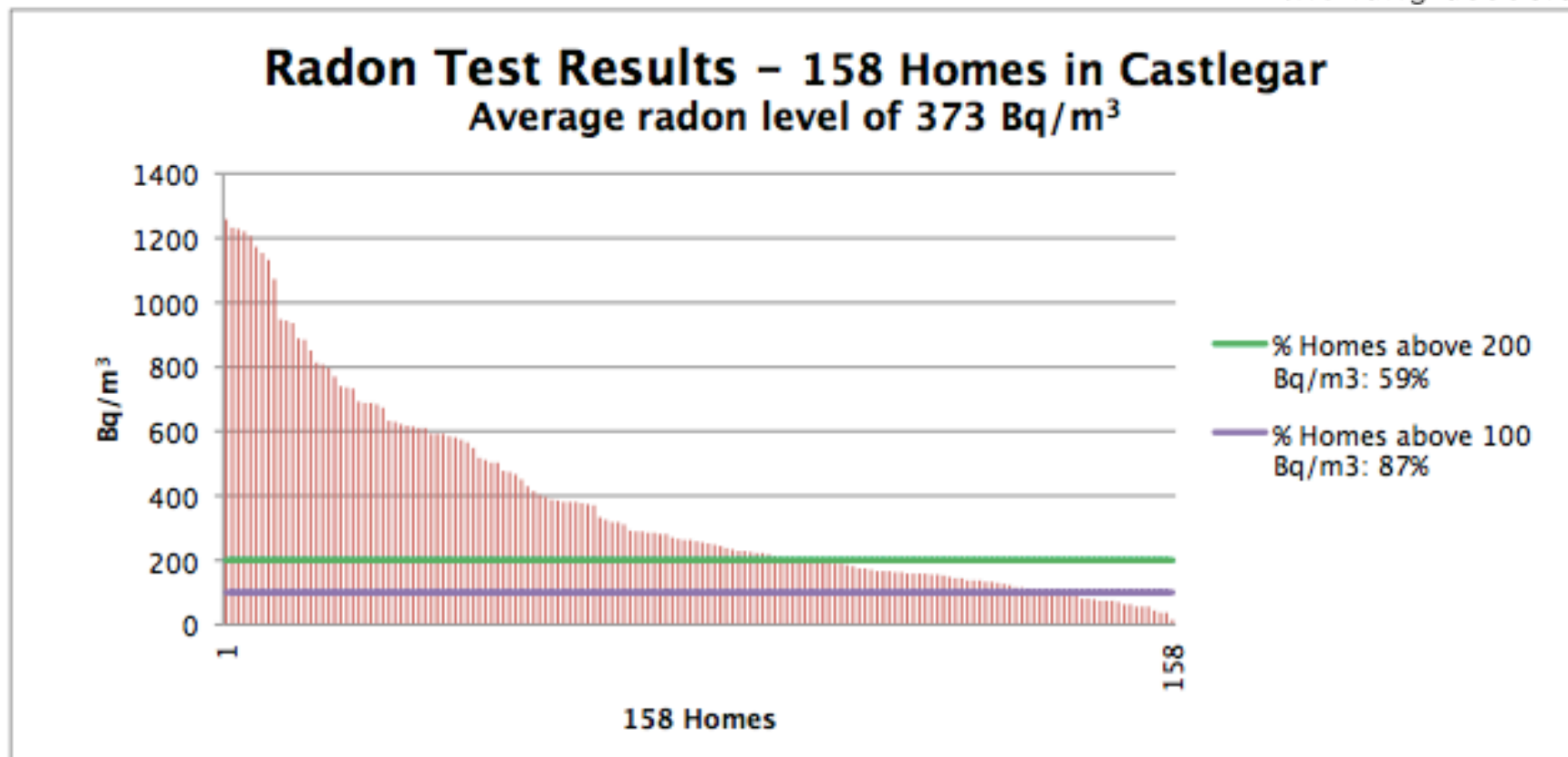
- 29.3% of homes in **Kootenay-Boundary region** tested had indoor radon levels above 200 Bq/m³
- 17.4% of homes in **Okanagan region** tested had indoor radon level above 200 Bq/m³



BC Community Radon Testing Projects

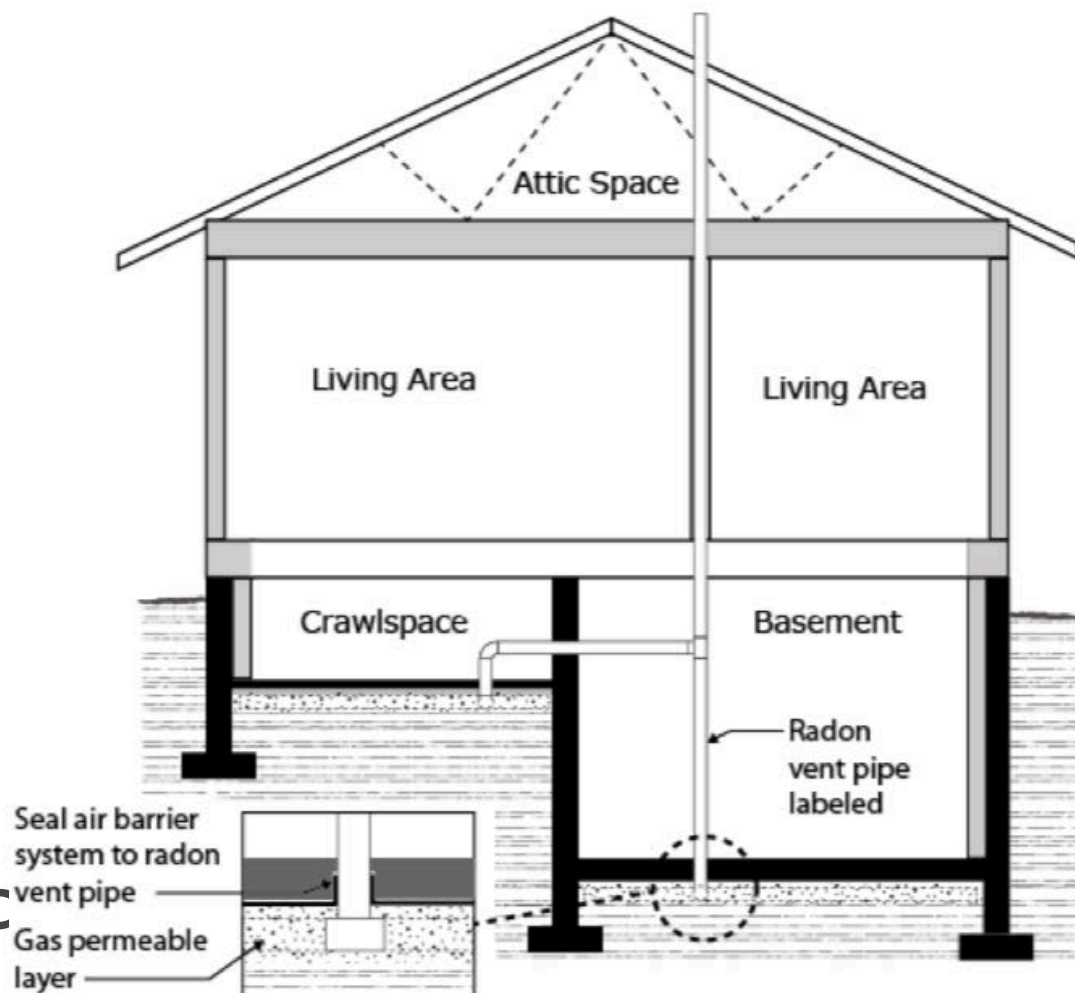
Chart 1 - Radon Test Results: All Homes in Castlegar

RADON**AWARE**
the lung association



BC Building Code Changes 2018

- Part 9 of BC Building Code requires some buildings to have a radon rough-in for a subfloor depressurization system, in some locations in the province outlined in [Bulletin B14-07](#)
- **Building Inspectors play a role in supporting the enforcement of the BC Building Code**



Radon in Columbia-Shuswap region

- High uranium content in the soil makes this risk area for radon
- High radon can be found in all types of buildings:
 - Residences, schools, workplaces
 - Buildings with no basements or crawlspaces
 - Old drafty buildings and new well sealed buildings
- In Revelstoke over 35% of residences are testing above 200 Bq/m³
 - Some Revelstoke homes have measured radon levels more than 20 times the Federal Radon Guideline



Radon Mitigation: How to reduce radon levels

- All buildings can be effectively mitigated
- Minimally invasive techniques
- Almost immediate results



Take Action on Radon

- Take Action on Radon is a national initiative to bring together stakeholders and raise awareness on radon across Canada
 - www.takeactiononradon.ca
- The advisory team includes (CARST), Canadian Cancer Society and CAREX Canada
- Many activities happening across Canada
 - [100 Radon Test Kit Challenge](#)



Questions?



Lindsay Forsman-Phillips

lindsay@carexcanada.ca

www.carexcanada.ca

Micky Leung

Micky.leung@canada.ca

www.canada.ca/radon

Chantal Wilson

cwilson@lbeng.ca

www.littlebearengineering.ca





Reference: 244672

December 21, 2018

VIA EMAIL: jsham@csrd.bc.ca

Chair Rhona Martin
Columbia-Shuswap Regional District

Dear Chair Martin:

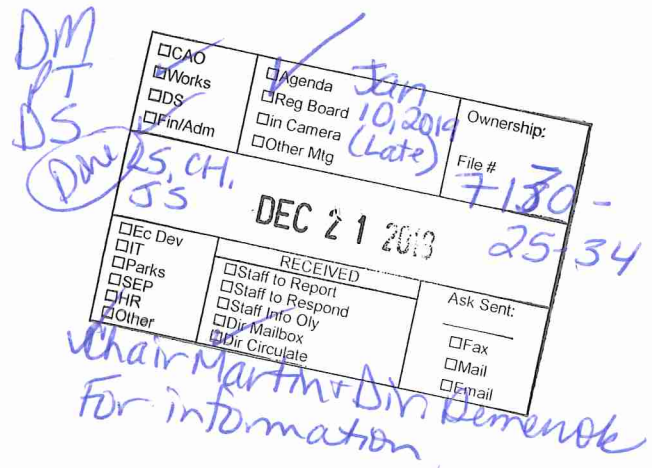
Thank you for your letter of November 29, 2018, to Minister Doug Donaldson, concerning Newsome Creek erosion at Caen Road in Sorrento within Electoral Area C of the Columbia-Shuswap Regional District (CSRD). I have been asked to respond and apologize for the delay.

I appreciate the CSRD Board's resolution of November 15, 2018, and the actions taken by the CSRD to date to pursue geotechnical assessment to gain further clarity on the erosion risks and next steps regarding Newsome Creek.

As you mention, Emergency Management BC (EMBC) funded one geotechnical assessment in 2017 and two additional geotechnical assessments as well as a danger tree assessment in 2018. The authors of the three geotechnical memos as well as Ministry of Forests, Lands, Natural Resource Operations and Rural Development (FLNRORD) staff concluded that Newsome Creek and the ravine in which it flows will continue to be unstable until geomorphological processes bring the creek into equilibrium with its surroundings. The geotechnical memo of October 6, 2018, recommended the following actions: owners of the four properties with permanent structures at risk consider moving them; the creek channel above the TCH be studied to assess its stability; a feasibility study on how the ravine can be stabilized be undertaken; and the TCH culvert be assessed and/or stabilized.

With respect to Ministry of Transportation and Infrastructure (MOTI) actions, I understand that interim repairs to the affected roads and damaged culverts have been completed. A hydrologic assessment was completed for the creek to determine the appropriate culvert sizes for the side road crossings and the crossing at the TCH. As part of this work, culverts along the stream are being considered for upsizing in 2019. Additional engineering is required to confirm what is required for the culvert crossing at the TCH. No timeframe for this repair has been confirmed. MOTI's mandate is limited to the protection of the crossings. Proactive work to protect homes is the responsibility of the CSRD as the local government. MOTI's focus will be to ensure that the natural drainage in Newsome Creek flows in a manner unimpeded by its culverts. I also understand that EMBC approved funding for removal of the identified danger trees referenced in your letter, and that the Sorrento Centre has applied for a Section 11 permit under the *Water Sustainability Act*.

Page 1 of 2



Chair Rhona Martin

The Water Sustainability Regulation of the *Water Sustainability Act* allows local governments to undertake restoration of a stream channel. As a permitting body overseeing works in and about streams in British Columbia, FLNRORD has provided approvals to several municipalities and regional districts in 2017 and 2018 for stream restoration projects such as vegetation and debris removal, dredging, and stream bank armoring. This situation is no different. This ministry strongly encourages the CSRD to apply for such works on behalf of its residents, supported by sound engineering principles and a robust environmental management plan.

To assist in this endeavour, my colleagues in EMBC have indicated that there are several applicable funding programs available if the financial resources within a local government are limited. These sources are described below:

- The Community Emergency Preparedness Fund is a suite of funding programs intended to enhance the resiliency of local governments and their residents in responding to emergencies and is administered through the Union of BC Municipalities. For more information on future funding intakes, please visit the website: www.ubcm.ca/EN/main/funding/lgps/community-emergency-preparedness-fund.html
- The Federal Disaster Mitigation and Adaptation Fund is a 10-year, \$2-billion national program designed to help communities better withstand current and future risks of natural hazards. The fund will support large-scale infrastructure projects with a minimum cost of \$20 million. For more information, please visit: <https://www.infrastructure.gc.ca/dmaf-faac/index-eng.html>
- The Rural and Northern Communities Program is a component of the wider Investing in Canada Infrastructure Program, which supports infrastructure projects in communities across the province that have populations 25,000 or less. For more information, please visit the website: www2.gov.bc.ca/assets/gov/driving-and-transportation/funding-engagement-permits/grants-funding/investing-in-canada/rnc-program-guide.pdf

Again, thank you for taking the time to write and share CSRD and residents' concerns. I encourage the CSRD to: investigate the provincial and federal funding sources outlined above; undertake the hydrologic assessment and ravine stabilization assessment studies recommended by the EMBC-funded geotechnical memo of October 6, 2018 and; apply to the province for authorisation to undertake any works recommended in the feasibility study to protect its citizens, including vegetation removal and/or stream bank protection.

Sincerely,



Paul Rasmussen
Assistant Deputy Minister
South Area

pc: Honourable Claire Trevena, Minister of Transportation and Infrastructure
Honourable Doug Donaldson, Minister of Forests, Lands, Natural Resource
Operations and Rural Development



COLUMBIA SHUSWAP REGIONAL DISTRICT

555 Harbourfront Drive NE, PO Box 978, Salmon Arm, BC V1E 4P1
T: 250.832.8194 | F: 250.832.3375 | TF: 1.888.248.2773 | www.csr.d.bc.ca

November 29, 2018

7130 25 34

VIA EMAIL: FLNR.Minister@gov.bc.ca

The Honourable Doug Donaldson, MLA
Minister of Forests, Lands, Natural Resource
Operations and Rural Development
PO Box 9049 Stn Prov Govt
Victoria, BC V8W 9E2

Dear Minister Donaldson:

RE: Newsome Creek Erosion at Caen Road in Sorrento, CSR D Electoral Area C

During the 2017 and 2018 spring freshet events, the banks of Newsome Creek below the Trans-Canada Highway in Sorrento were severely eroded, affecting many properties along Caen Road. This erosion was caused by above normal spring precipitation and the high creek flows were exacerbated by the runoff that occurred in the upper reaches of the watershed. The increased runoff is due to forest canopy loss related to the severe wildfire that burned in the area in 2009, and the minimal reforestation that occurred afterwards. Longtime residents of over 30 years have indicated stream flows during freshet have increased drastically over the last few years.

A geotechnical assessment was conducted at Newsome Creek in both 2017 and 2018 based on residents concern for property and life safety. The assessment work was completed by qualified professionals for the CSR D's Shuswap Emergency Program with the receipt of 100% funding approved through Emergency Management British Columbia (EMBC). This assessment work was also requested by the Ministry of Forests, Lands, Natural Resource Operations and Rural Development (FLNRORD). The report developed in 2018 by Westrek Geotechnical Services Ltd (Westrek) provided a number of recommendations to those provincial agencies responsible for stream management. The CSR D provided copies of that report to affected residents.

On May 3, 2018, CSR D Electoral Area C Director, Paul Demenok forwarded a letter to Minister Doug Donaldson alerting the Ministry to the ongoing concerns in the watershed and requested immediate assistance. On June 6, 2018 Director Demenok received a response letter from Gerry MacDougall, Regional Executive Director of the FLNRORD which included the following comments:

"According to the Local Government Act and Community Charter, local authorities are responsible for land use planning, designating bylaws (i.e. on floodplains), zoning, development and approval permits. British Columbia has no legislation or policy that mandates any individual, entity or any level of government to undertake hazard mitigation. However, the province makes funding available through EMBC and the Union of BC Municipalities to help communities prepare for flood hazard events."

.../2

ELECTORAL AREAS

A GOLDEN-COLUMBIA
B REVELSTOKE-COLUMBIA

C SOUTH SHUSWAP
D FALKLAND-SALMON VALLEY

E SICAMOUS-MALAKWA
F NORTH SHUSWAP-SEYMOUR ARM

MUNICIPALITIES

GOLDEN
REVELSTOKE

SALMON ARM
SICAMOUS

The authority to enact zoning bylaws and other land use controls is entirely different than undertaking feasibility studies regarding erosion issues. This is even more the case where the apparent cause is a stream that by virtue of the Water Act is clearly a provincial area of responsibility. With respect to the construction of the private buildings at issue, the CSRD did not approve either the subdivision or a building permit.

The CSRD's Shuswap Emergency Program (SEP) has been advised that the necessary feasibility study would cost between \$35,000 and \$50,000 and could be complete before the 2019 freshet. This study would identify long term mitigation works required to stabilize the creek banks in the lower reaches of Newsome Creek, and identify what short term mitigation could be constructed before the 2019 spring freshet. The study will also determine the emergency response required if a large scale slope failure were to occur before mitigative works are implemented. On October 31, 2018, the SEP requested that the Province fund this feasibility study through a funding request to EMBC.

On November 26, 2018, EMBC indicated that they approved the request; however, without giving any rationalization, the Province indicated it could only fund 50% of the project and suggested a 50/50 cost share with the CSRD.

At the Regular CSRD Board meeting held November 15, 2018 the Board unanimously passed the following resolution.

THAT: the Board send a letter to Minister of Forests, Land, Natural Resource Operations and Rural Development and the Solicitor General with notification that the Province under the Water Act is clearly responsible for stream activity and as such should fund the necessary studies and mitigation works to protect the Newsome Creek stream banks along Caen Road from further erosion.

The CSRD is committed to provide in-kind contribution and project management to procure a suitable qualified consultant to complete a feasibility study on the lower reaches of Newsome Creek. The CSRD also understands that an adjacent property owner to Newsome Creek, the Sorrento Centre, has agreed to fund the removal of the danger trees that have fallen into the creek which have further diverted the stream flow and increased creek bank erosion. The Sorrento Centre has applied for a Section 11 permit to conduct works within the stream.

The CSRD and the private landowners are interested in a collaborative approach with the Province to determine the best course of action to mitigate further erosion caused by Newsome Creek both in the short and long term. The CSRD appreciates that the Province has currently expressed willingness to fund 50% of the study. As the Ministry is aware, the CSRD does not have any kind of a service established that would authorize expenditure of full or partial funds for such a study. The CSRD requests that the Province collaborate with the CSRD and private property owners and provide the necessary funding to conduct the feasibility study.

I look forward to your timely response to this letter.

Yours truly,

COLUMBIA SHUSWAP REGIONAL DISTRICT

Per:



Rhona Martin, Chair

cc The Honourable Mike Farnworth, Minister of Public Safety and Solicitor General
 Greg Kylo, MLA, Shuswap
 Paul Demenok, Director, Electoral Area C



Reference: 244085

December 28, 2018

VIA EMAIL: wberg08@telus.net

Wes and Barb Berg
 Newsome Creek Watershed Action Group
 2817 Caen Road
 Sorrento, British Columbia
 V0E 2W0

DM
PT
BS
Done

<input type="checkbox"/> CAO	<input type="checkbox"/> Agenda	Ownership: File # 7130-
<input checked="" type="checkbox"/> Works	<input checked="" type="checkbox"/> Reg Board	
<input type="checkbox"/> DS	<input type="checkbox"/> in Camera	25-34
<input type="checkbox"/> Fin/Adm	<input type="checkbox"/> Other Mtg	
DEC 28 2018		
<input type="checkbox"/> Ec Dev	RECEIVED	
<input type="checkbox"/> IT	<input type="checkbox"/> Staff to Report	Ask Sent:
<input type="checkbox"/> Parks	<input type="checkbox"/> Staff to Respond	<input type="checkbox"/> Fax
<input type="checkbox"/> SEP	<input type="checkbox"/> Staff Info Oly	<input type="checkbox"/> Mail
<input type="checkbox"/> HR	<input type="checkbox"/> Dir Mailbox	<input type="checkbox"/> Email
<input type="checkbox"/> Other	<input type="checkbox"/> Dir Circulate	

CHILSS
 2019 (Late)
 25-34
 vchar Minister Doug Donaldson
 For Information

Dear Wes and Barb Berg:

Thank you for your letter of November 29, 2018, to Minister Doug Donaldson, expressing your concerns about erosion and bank stability of the Newsome Creek watershed. I have been asked to respond and apologize for the delay.

I appreciate that the complexity and uncertainty of this situation is distressing for landowners and residents with homes and other property along Newsome Creek and in the village. Below I have outlined the current status of this unfortunate situation, the actions taken, and possible solutions going forward.

The Notch Hill Fire burned 1,020 hectares within the upper watershed of Newsome Creek in 2009. Salvage harvest that was completed in 2010 had removed approximately 65 hectares of forest, which was replanted soon after. In 2016, fall rains resulted in saturated soils and a high groundwater table that still persists, and in 2017, spring rain-on-snow events caused flooding of several creeks in the province. In 2018, elevated snow packs contributed to flooding. Elevated flows in Newsome Creek in 2017 and 2018 were similar to those experienced in creeks throughout southern British Columbia. High stream flows in 2017 and 2018 in the already steep ravine (15 to 20 metres deep) between Trans Canada Hwy (TCH) and Dieppe Road, coupled with unique geologic deposits (clay and silt over gravel) have resulted in over-steepening of the ravine walls and the potential for further failure of the slopes should additional flooding erode and undercut the creek banks. The erosion has caused several large trees within the ravine to fall.

As you mention, Emergency Management BC (EMBC) funded one geotechnical assessment in 2017 and two additional geotechnical assessments as well as a danger tree assessment in 2018. I also understand that EMBC approved funding for removal of the identified danger trees and that, as you mention, a Section 11 permit has been applied for under the *Water Sustainability Act*.

Page 1 of 3

Wes and Barb Berg, Newsome Creek Watershed Action Group

The authors of the three geotechnical memos as well as Ministry of Forests, Lands, Natural Resource Operations and Rural Development (FLNRORD) staff concluded that Newsome Creek and the ravine in which it flows will continue to be unstable until geomorphological processes bring the creek into equilibrium with its surroundings. The geotechnical memo of October 6, 2018, recommended the following: owners of the four properties with permanent structures at risk consider moving them; the creek channel above the TCH be studied to assess its stability; a feasibility study on how the ravine can be stabilized be undertaken; and the TCH culvert be assessed and/or stabilized.

With respect to the Ministry of Transportation and Infrastructure's (MOTI) actions, I understand that interim repairs to the affected roads and damaged culverts have been completed. A hydrologic assessment was completed for the creek to determine the appropriate culvert sizes for the side road crossings and the crossing at the TCH. As part of this work, culverts along the stream are being considered for upsizing in 2019. Additional engineering is required to confirm what is required for the culvert crossing at the TCH. No timeframe for this repair has been confirmed. MOTI's mandate is limited to the protection of the crossings. Proactive work to protect homes is the responsibility of the CSRD as the local government. MOTI's focus will be to ensure that the natural drainage in Newsome Creek flows in a manner unimpeded by its culverts.

The Water Sustainability Regulation of the *Water Sustainability Act* allows local governments to undertake restoration of a stream channel. As a permitting body overseeing works in and about streams in British Columbia, FLNRORD has provided approvals to several municipalities and regional districts in 2017 and 2018 for stream restoration projects such as vegetation and debris removal, dredging, and stream bank armouring. This situation is no different. This ministry strongly encourages the Columbia-Shuswap Regional District (CSRD) to apply for such works on behalf of its residents, supported by sound engineering principles and a robust environmental management plan.

To assist in this endeavour, my colleagues in EMBC have indicated that there are several applicable funding programs available to support the CSRD. These sources are described below:

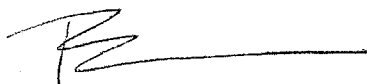
- The Community Emergency Preparedness Fund is a suite of funding programs intended to enhance the resiliency of local governments and their residents in responding to emergencies and is administered through the Union of BC Municipalities. For more information on future funding intakes, please visit the website: www.ubcm.ca/EN/main/funding/lgps/community-emergency-preparedness-fund.html
- The Federal Disaster Mitigation and Adaptation Fund is a 10-year, \$2-billion national program designed to help communities better withstand current and future risks of natural hazards. The fund will support large-scale infrastructure projects with a minimum cost of \$20 million. For more information, please visit: <https://www.infrastructure.gc.ca/dmaf-faac/index-eng.html>
- The Rural and Northern Communities Program is a component of the wider Investing in Canada Infrastructure Program and supports infrastructure projects in communities

Wes and Barb Berg, Newsome Creek Watershed Action Group

across the province that have populations 25,000 or less. For more information, please visit the website: www2.gov.bc.ca/assets/gov/driving-and-transportation/funding-engagement-permits/grants-funding/investing-in-canada/rnc-program-guide.pdf.

Again, thank you for taking the time to write and share your concerns. In a similar letter to the CSRD, I have encouraged the CSRD to: investigate the provincial and federal funding sources outlined above; undertake the hydrologic assessment and ravine stabilization assessment studies recommended by the EMBC-funded geotechnical memo of October 6, 2018, and; apply to the province for authorisation to undertake any works recommended in the feasibility study to protect its citizens, including vegetation removal and/or stream bank protection.

Sincerely,



Paul Rasmussen
Assistant Deputy Minister
South Area

pc: Honourable Doug Donaldson, Minister of Forests, Lands, Natural Resource
Operations and Rural Development
Honourable Mike Farnworth, Minister of Public Safety and Solicitor General
Honourable George Heyman, Minister of Environment and Climate Change Strategy
Honourable Claire Trevena, Minister of Transportation and Infrastructure
Rhona Martin, Chair, Columbia-Shuswap Regional District



NEWSOME CREEK Watershed Action Group

Honourable Doug Donaldson
Minister of Forests, Lands, Natural Resource Operations and Rural Development
PO Box 9049 Stn Prov Govt
Victoria, BC, V8W 9E2

Dear Minister Donaldson,

We are writing you to ask you to take actions immediately which will help ensure we do not lose our lives, homes, businesses or properties when the 2019 spring freshet occurs in Newsome Creek in Sorrento BC. The current situation is quite serious, and our concern is if actions are not taken before the 2019 freshet we will see our properties destroyed as they tumble into Newsome Creek ravine.

It seems to us that the Province is not living up to its responsibility in this matter. We understand that the Newsome Creek bed, and the water itself, is under the authority and responsibility of the Province as outlined in the Water Act. Would this responsibility not fall under your Ministry? It is also our understanding that we couldn't even begin to do any mitigative works on our own, without substantial interactions and approvals from the Province. This certainly suggests that it is the Province, in fact, that has the authority and responsibility here.

We have met with local representatives from the Ministry of Transportation and Infrastructure, and the Ministry of Forests, Lands, Natural Resource Operations and Rural Development, and they indicated that there was nothing they could do to help us. We are also aware of the correspondence your office has exchanged with our local CSRD director, Paul Demenok, and we are very disappointed that the urgency of our predicament does not appear to be a consideration. The various funds you suggested that we should access don't address our problem in the required timely manner. Again, if the 2019 freshet is similar to those seen in 2017 and 2018, we will lose our property. This is an emergency works scenario requiring immediate actions.

EMBC, to their credit, has funded several studies in 2017 and 2018 which have recommended that mitigative actions be immediately taken in Newsome Creek. Why has no action occurred to date?

In your letter to Director Demenok you note that it is the local government which is responsible for land use planning, bylaws, zoning and develop permits. Please note that these lands were approved for subdivision by the Ministry of Transportation and Infrastructure. It should also be noted that this subdivision would not meet current standards. Your letter also noted that *"British Columbia has no legislation or policy that mandates any individual, entity of level of government to undertake hazard mitigation"*. But in a previous section your letter stated that *"The Province recognizes that flood*

protection is a shared responsibility and its success is dependent on support from all levels of government as well as private property owners". We are prepared to do our part as we will absorb the costs of removing the danger trees identified in the EMBC funded study. We have already contacted a logging firm and are moving forward with a Section 11 request with DFO. We understand that the CSRD will act on our behalf to project manage and administer any further studies and mitigative works. We are now asking your ministry to step up and do its part.

What we are asking for is that emergency works funds be released to the CSRD to undertake an Emergency Erosion Mitigation Workplan which can be put into effect prior to the 2019 freshet. We are also asking that your Ministry actively assist us with all required approvals and permits to get this work done in a timely manner, and we are asking that funds be released to implement the workplan. Again, we must emphasize that we believe these emergency works need to occur before the 2019 freshet.

We would encourage you to consider the broader perspective by accessing our website at www.newsomcreek.ca. Please respond at your earliest convenience. Thank you very much for your kind and early consideration of our urgent requests.

Sincerely,



WES + BARB BERG
2817 CHEN ROAD
SURREY BC
VOE 2W0

Laura Schumi

From: Laura Schumi
Sent: Tuesday, January 08, 2019 11:44 AM
To: Laura Schumi
Subject: FW: Danger in Sorrento, BC (ref: 244663) - LATE AGENDA ITEM, JANUARY BOARD - CORRESPONDENCE

Importance: High

From: Lynda Shykora
Sent: Monday, January 07, 2019 12:04 PM
To: Director Martin <RMartin@csrd.bc.ca>; Director Demenok <PDemenok@csrd.bc.ca>
Cc: Charles Hamilton <chamilton@csrd.bc.ca>; Jennifer Sham <jsham@csrd.bc.ca>; Darcy Mooney <dmooney@csrd.bc.ca>; Phaedra Turner <Pturner@csrd.bc.ca>
Subject: FW: Danger in Sorrento, BC (ref: 244663) - LATE AGENDA ITEM, JANUARY BOARD - CORRESPONDENCE
Importance: High

Good morning, Chair Martin and Director Demenok,
 For your information, here is the Asst Deputy Minister's email response to letters from [REDACTED] We will also include this letter on the January 10th 2019 Board Agenda, as a Late item.

Regards,
 Lynda Shykora
 CSRD

From: Jennifer Sham
Sent: Monday, January 07, 2019 11:30 AM
To: Lynda Shykora <LShykora@csrd.bc.ca>
Subject: FW: Danger in Sorrento, BC (ref: 244663)

More!

From: Executive Division Office, FLNR:EX [mailto:FLNR.ExecutiveDivisionOffice@gov.bc.ca]
Sent: Friday, December 28, 2018 9:47 AM
To: [REDACTED]
Cc: OfficeofthePremier, Office PREM:EX <Premier@gov.bc.ca>; Minister, FLNR FLNR:EX <FLNR.Minister@gov.bc.ca>; Minister, ENV ENV:EX <ENV.Minister@gov.bc.ca>; Minister, PSSG PSSG:EX <PSSG.Minister@gov.bc.ca>; Minister, TRAN Phone TRAN:EX <TRANPhone.Minister@gov.bc.ca>; Jennifer Sham <jsham@csrd.bc.ca>
Subject: RE: Danger in Sorrento, BC (ref: 244663)

Dear [REDACTED]:

Thank you for your letters of November 29, December 3 and 5, 2018, to Premier John Horgan, Minister Doug Donaldson and Minister George Heyman, expressing your concerns about erosion and bank stability of the Newsome Creek watershed. I have been asked to respond and apologize for the delay.

I appreciate that the complexity and uncertainty of this situation is distressing for landowners and residents with homes and other property along Newsome Creek and in the village. Below I have outlined the current status of this unfortunate situation, the actions taken, and possible solutions going forward.

The Notch Hill Fire burned 1,020 hectares within the upper watershed of Newsome Creek in 2009. Salvage harvest that was completed in 2010 had removed approximately 65 hectares of forest, which was replanted soon after. In 2016, fall rains resulted in saturated soils and a high groundwater table that still persists, and in 2017, spring rain-on-snow events caused flooding of several creeks in the province. In 2018, elevated snow packs contributed to flooding. Elevated flows in Newsome Creek in 2017 and 2018 were similar to those experienced in creeks throughout southern British Columbia. High stream flows in 2017 and 2018 in the already steep ravine (15 to 20 metres deep) between Trans Canada Hwy (TCH) and Dieppe Road, coupled with unique geologic deposits (clay and silt over gravel) have resulted in over-steepening of the ravine walls and the potential for further failure of the slopes should additional flooding erode and undercut the creek banks. The erosion has caused several large trees within the ravine to fall.

As you mention, Emergency Management BC (EMBC) funded one geotechnical assessment in 2017 and two additional geotechnical assessments as well as a danger tree assessment in 2018. I also understand that EMBC approved funding for removal of the identified danger trees and that, as you mention, a Section 11 permit has been applied for under the *Water Sustainability Act*.

The authors of the three geotechnical memos as well as Ministry of Forests, Lands, Natural Resource Operations and Rural Development (FLNRORD) staff concluded that Newsome Creek and the ravine in which it flows will continue to be unstable until geomorphological processes bring the creek into equilibrium with its surroundings. The geotechnical memo of October 6, 2018, recommended the following: owners of the four properties with permanent structures at risk consider moving them; the creek channel above the TCH be studied to assess its stability; a feasibility study on how the ravine can be stabilized be undertaken; and the TCH culvert be assessed and/or stabilized.

With respect to the Ministry of Transportation and Infrastructure's (MOTI) actions, I understand that interim repairs to the affected roads and damaged culverts have been completed. A hydrologic assessment was completed for the creek to determine the appropriate culvert sizes for the side road crossings and the crossing at the TCH. As part of this work, culverts along the stream are being considered for upsizing in 2019. Additional engineering is required to confirm what is required for the culvert crossing at the TCH. No timeframe for this repair has been confirmed. MOTI's mandate is limited to the protection of the crossings. Proactive work to protect homes is the responsibility of the CSRD as the local government. MOTI's focus will be to ensure that the natural drainage in Newsome Creek flows in a manner unimpeded by its culverts.

The Water Sustainability Regulation of the *Water Sustainability Act* allows local governments to undertake restoration of a stream channel. As a permitting body overseeing works in and about streams in British Columbia, FLNRORD has provided approvals to several municipalities and regional districts in 2017 and 2018 for stream restoration projects such as vegetation and debris removal, dredging, and stream bank armoring. This situation is no different. This ministry strongly encourages the Columbia-Shuswap Regional District (CSRD) to apply for such works on behalf of its residents, supported by sound engineering principles and a robust environmental management plan.

To assist in this endeavour, my colleagues in EMBC have indicated that there are several applicable funding programs available to support the CSRD. These sources are described below:

- The Community Emergency Preparedness Fund is a suite of funding programs intended to enhance the resiliency of local governments and their residents in responding to emergencies and is administered through the Union of BC Municipalities. For more information on future funding intakes, please visit

the website: <https://www.ubcm.ca/EN/main/funding/lgps/community-emergency-preparedness-fund.html>

- The Federal Disaster Mitigation and Adaptation Fund is a 10-year, \$2-billion national program designed to help communities better withstand current and future risks of natural hazards. The fund will support large-scale infrastructure projects with a minimum cost of \$20 million. For more information, please visit: <https://www.infrastructure.gc.ca/dmaf-faac/index-eng.html>
- The Rural and Northern Communities Program is a component of the wider Investing in Canada Infrastructure Program and supports infrastructure projects in communities across the province that have populations 25,000 or less. For more information, please visit the website: <https://www2.gov.bc.ca/assets/gov/driving-and-transportation/funding-engagement-permits/grants-funding/investing-in-canada/rnc-program-guide.pdf>

Again, thank you for taking the time to write and share your concerns. In a similar letter to the CSRD, I have encouraged the CSRD to: investigate the provincial and federal funding sources outlined above; undertake the hydrologic assessment and ravine stabilization assessment studies recommended by the EMBC-funded geotechnical memo of October 6, 2018, and; apply to the province for authorisation to undertake any works recommended in the feasibility study to protect its citizens, including vegetation removal and/or stream bank protection.

Sincerely,

Paul Rasmussen
Assistant Deputy Minister
South Area

pc: Honourable John Horgan, Premier of British Columbia
Honourable Doug Donaldson, Minister of Forests, Lands, Natural Resource
Operations and Rural Development
Honourable George Heyman, Minister of Environment and Climate Change Strategy
Honourable Claire Trevena, Minister of Transportation and Infrastructure
Rhona Martin, Chair, Columbia-Shuswap Regional District

District of Sicamous

446 Main Street
PO Box 219
Sicamous, BC
V0E 2V0

T: 250 836 2477
F: 250 836 4314
E: info@sicamous.ca
sicamous.ca



January 7, 2019

Columbia Shuswap Regional District
555 Harbourfront Drive NE
PO Box 978
Salmon Arm, BC
V1E 4P1

Re: Canada-British Columbia - Rural & Northern Communities Program

Dear Rhona,

On behalf of the District of Sicamous, please accept this letter as an official request for the CSRD Board to provide a letter of support regarding the above-mentioned grant program. The deadline to submit applications is **Wednesday January 23, 2019.**

As part of our 2019 strategic priority, the District of Sicamous intends to build a Community Wellness Centre as well as a regional healing centre for Indigenous and non-Indigenous peoples. The District was recently awarded a Community Wellness Grant (BC Healthy Communities) to implement a comprehensive Community Wellness Strategy. This plan is expected to be completed in July 2019 with specific recommendations on delivering community wellness strategies in relation to environmental, social, economic development, asset management, and health care services.

The proposed 20,300 sq. ft regional facility would house traditional health care professionals with an emphasis on mental health and healing/wellness care. This facility would be built in Sicamous (Main Street) serving as a regional hub for both physical and mental health support. The District of Sicamous purchased the existing medical clinic back in December 2017. It is our intent to transfer all the current leasees (1 optometrist, 3 dentists, 2 physicians, 1 physical therapist) to the new Community Wellness Centre within 24-36 months.

The District of Sicamous is currently negotiating on purchasing two acres of prime downtown space to site this facility. The estimated cost to build this facility is just shy of \$5,200,000. The said grant provides 100% grant funding to rural communities less than 25,000 people (see project estimates).

The District of Sicamous is proud to be partnering with Splat-sin on this project as well as the Shuswap Local & Secwepemc Governments identified in the Communications Agreement signed in December 2018.

Thank you so much for your support as we embark on a true collaborative initiative serving the Columbia Shuswap region for years to come.

Regards,

DISTRICT OF SICAMOUS

A handwritten signature in black ink, appearing to read "Terry Rysz", is written over a faint, larger version of the same signature.

Mayor Terry Rysz

c.c. MLA Greg Kylo
Chief Wayne Christian – Splat-sin
District Council

Rural & Northern Communities Grant

Sicamous
LIVE MORE



Truth & Reconciliation

Sicamous
LIVE MORE



Call to Action #21

We call upon the federal government to provide sustainable funding for existing and new Aboriginal healing centres to address the physical, mental, emotional, and spiritual harms caused by residential schools, and to ensure that the funding of healing centres in Nunavut and the Northwest Territories is a priority.

Call to Action #22

We call upon those who can effect change within the Canadian health-care system to recognize the value of Aboriginal healing practices and use them in the treatment of Aboriginal patients in collaboration with Aboriginal healers and Elders where requested by Aboriginal patients.

Community Wellness & Healing Center



Rural & Northern Communities Grant

project vision

- * Healing Center providing space for healthcare professionals (Indigenous & Non-Indigenous)
- * Cornerstone of downtown revitalization
- * Connectivity to seniors village
- * Community connection space

partnerships

- * Splatsin
- * Sicamous Development Corporation
- * Physician Recruitment (incentive package)
- * Regional partnerships (CSRD, IHA, UBCO)

steps taken

- * Market Sounding – RFEI issued
- * Official Community Plan (2016)
- * Downtown revitalization plan –RTE / DCC Bylaw
- * Purchase of existing medical clinic



Finlayson Place

Sicamous
LIVE MORE



Community Wellness & Healing Centre

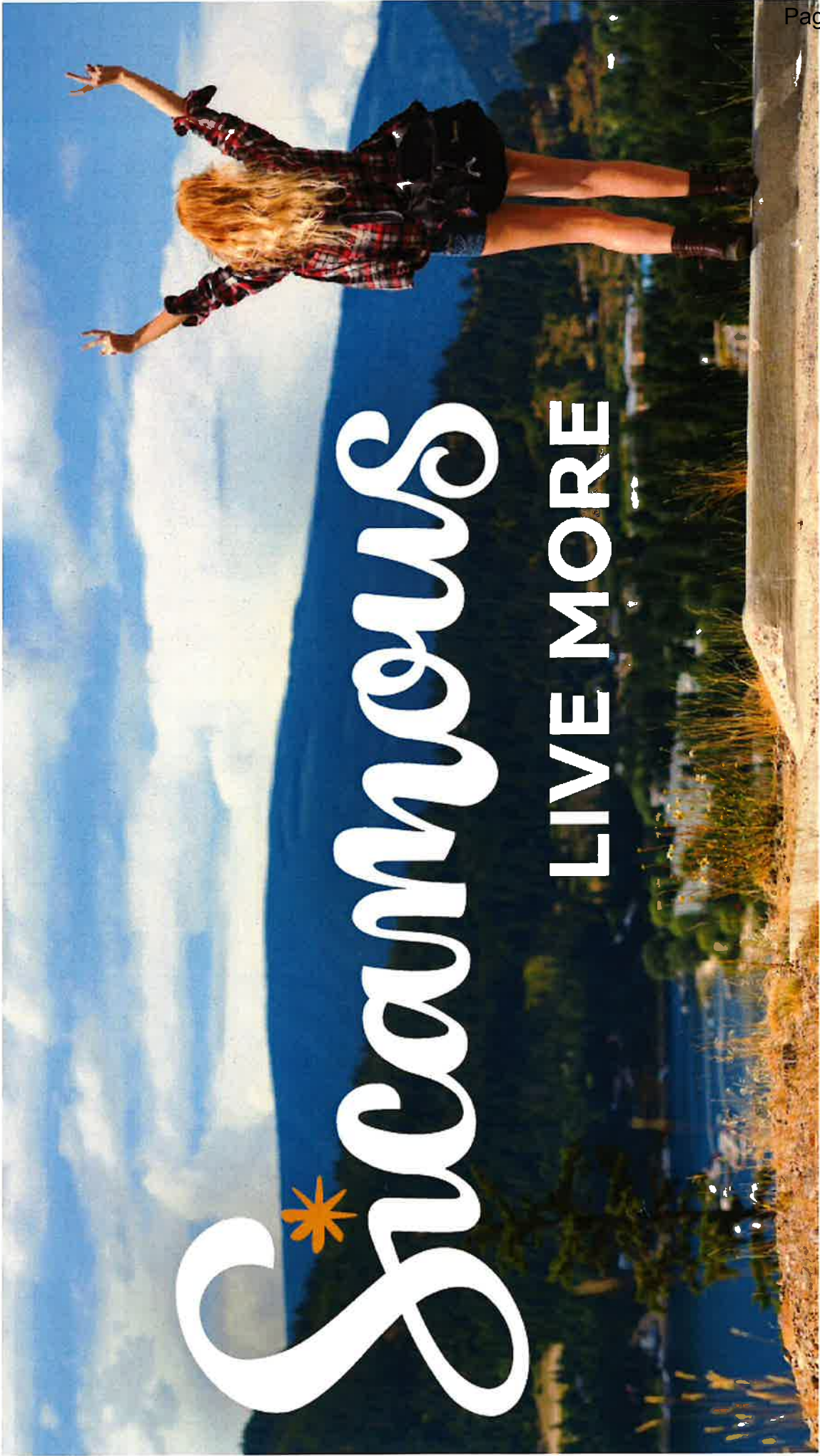
Sicamous
LIVE MORE



Sicamous Splatstin Partnership

Sicamous
LIVE MORE





Summers

LIVE MORE

DISTRICT OF SICAMOUS & REGION COMMUNITY WELLNESS/HEALING CENTRE

November 23, 2018

Overview

1. Project Background and Description



Describe how this project came about, who is involved, and the purpose.

The District has been actively pursuing and recruiting for a second physician. Incentive package being offered equates to \$51,000 over three years. Sicamous issued a RFEI (Market Sounding) in September 2017. BayView Homes was the successful proponent. Sicamous purchased the Beestone Building in December 2017 and is negotiating with two landowners on Main street to acquire 2 acres of prime downtown commercial space. A private investor has expressed interest in purchasing these lands and taking an equity position in the development of a Community Wellness/Healing Centre.

2. Project Scope



Sicamous needs to secure private capital and provincial funding for it has no capacity to fully fund this project. The 25,000 sq ft building is expected to cost approx. \$250/sq ft which equates to a \$6,250,000 facility. Add land and 20% contingency and it pencils out to around a \$8M project. The preferred option is Sicamous secures provincial and federal funding to assist with the capital and allow the private sector to manage and operate the Community Wellness/Healing Centre. Sicamous manages six healthcare professionals/tenants in Finlayson Place (Beestone Building) and plans to move them all into the new facility no later than Fall 2020. At that time, Finlayson Place will be retrofitted and transitioned into a Recreation Centre offering community space for program/services for Sicamous and the region. The District of Sicamous applied for \$100,000 in RDF funding for architectural and engineering/design estimates. The federal government implemented the Truth & Reconciliation Commission Calls to Action report in 2015. In that report, there are 91 calls to action including #21 – *'We call upon the federal government to provide sustainable funding for existing and new aboriginal healing centres to address the physical, mental, emotional, and spiritual harms caused by residential schools, and to ensure that the funding of healing centres in Nunavut and the Northwest Territories is a priority'*.

It is the intent and commitment to build a Community Wellness Centre as well as a regional healing centre for Indigenous and non-Indigenous peoples. The District was recently awarded a Community Wellness Grant (BC Healthy Communities) to implement a comprehensive Community Wellness Strategy. This plan is expected to be completed in July 2019 with specific recommendations on delivering community wellness strategies in relation to environmental, social, economic development, asset management, and health care services.

3. High-Level Requirements



The Project must have the following commitments before proceeding to the design stages:

- A commitment of federal/provincial funding of \$6M in capital grants
- A commitment of Splat sin to contribute to the capital component as well as operations and management
- A commitment of the District of Sicamous to provide the land and other incentives relative to the development
- A commitment of the CSRD to provide 'area E' EOF funding toward the capital component of the project

4. Participants



- Splat sin
- District of Sicamous
- Columbia Shuswap Regional District
- Interior Health
- Sicamous & District Chamber of Commerce
- Sicamous Medical Centre
- Sicamous Community Wellness Strategy Committee
- BayView Homes
- Private sector
- Other

5. Implementation & High-Level Timeline/Schedule



1. Secure \$100,000 RDF funding to commence architectural/engineering/design works. Announcement expected by December 15, 2018
2. Secure property (2 acres) on Main Street. Negotiate with private investor on option to purchase agreements. Documents signed and executed no later than December 31, 2018
3. Apply for \$6M in Federal/Provincial funding (application deadline is January 23, 2019)
4. Commence Community Wellness Strategy/Plan as per the Terms of Reference of Community Wellness Committee. Final strategy to be completed no later than June 30, 2019
5. Secure financial commitment from Splat sin & CSRD no later than June 30, 2019
6. Secure leases of participating tenants no later than April 30, 2020
7. Pending funding commitments from various stakeholders/agencies, commence construction no later than summer/Fall 2020

Laura Schumi

From: Laura Schumi
Sent: Wednesday, January 02, 2019 3:39 PM
To: Laura Schumi
Subject: FW: January 2019 Board Agenda Item - Board support for Letter to Ministry of Transportation & Infrastructure re Pole & Pine Roads/Trans Canada Hwy, Area B

Importance: High

From: Director Brooks-Hill
Sent: Thursday, December 13, 2018 2:20 PM
To: Lynda Shykora <LShykora@csrd.bc.ca>
Cc: Charles Hamilton <chamilton@csrd.bc.ca>
Subject: RE: January 2019 Board Agenda Item - Board support for Letter to Ministry of Transportation & Infrastructure re Pole & Pine Roads/Trans Canada Hwy, Area B

Thank you Lynda and Charles.

I think some more details might be helpful. Pole Yard Road exits south off of the Trans Canada highway towards the Stella Jones Pole yard, the Smokey bear campground and several residences.

Pine Road exits North from the Trans Canada Highway directly across from Pole Yard Road and is the exit for the Peaks lodge, Base Camp resort and several residences.

There is a lot of traffic between these roads for snowmobile access to the Boulder mountain trailhead, the logging trucks for the pole yard and school buses picking up kids from the area. The school bus exits from the trans Canada onto Pine road, travels across Back road to the Trans Canada Highway, crosses the highway there onto Allen Frontage road and then back onto the highway at Pole yard road.

The current speed limit in this area is 100km/h although variable speed signs are in effect.

The desire is any or all of:

1. Lighting at these intersections. Apparently there used to be lighting at Pole Yard road and Pine Road. Perhaps we could look into what happened to the lights?
2. Reflectors on the road indication an upcoming intersection and perhaps signage.
3. A lower speed limit of perhaps 60 or 80 km/h from Revelstoke City Limits to these intersections.

I will be checking with the local RCMP for accident data in this area as I know there have been a lot of accidents – unless it would be better to leave this to staff?

Regards,

David Brooks-Hill
 CSRD Area B Director
 Cell: 250-463-2071

From: Lynda Shykora
Sent: December 12, 2018 3:52 PM
To: Director Brooks-Hill <DBrooks-Hill@csrd.bc.ca>
Cc: Charles Hamilton <chamilton@csrd.bc.ca>
Subject: January 2019 Board Agenda Item - Board support for Letter to Ministry of Transportation & Infrastructure re Pole & Pine Roads/Trans Canada Hwy, Area B


Good afternoon, Director Brooks-Hill,
Charles has let me know of a Board agenda item that you wish to include on the January 2019 Board agenda for discussion and support for a letter. We have noted the item.

FYI, it will be a Business by Area item, submitted by Director Brooks-Hill, re Request for Board Support – letter to Ministry of Transportation and Infrastructure re Traffic-Safety Concerns at Pine and Poles Roads/Trans Canada Highway, Electoral Area B. For the agenda itself, I will formulate a motion to include on the agenda (will run it by you first, to make sure you are happy with the motion). Also, we will include a map of the particular area so that the Board knows which area you are referring to.

I understand that this access road is to the Stella Jones operation and that it is also a school bus route, so safety is a big concern.

Regards,
Lynda Shykora | Deputy Manager
Corporate Administration Services
Columbia Shuswap Regional District
T: 250.833.5939 | F: 250.832.3375 | TF: 1.888.248.2773
E: lsykora@csrd.bc.ca | W: www.csrd.bc.ca



 Please consider the environment before printing this e-mail

This e-mail is CONFIDENTIAL. If you are not the intended recipient, please notify me immediately and delete this communication, attachment or any copy. Thank you.

Laura Schumi

From: Laura Schumi
Sent: Wednesday, January 02, 2019 3:42 PM
To: Laura Schumi
Subject: FW: Pine Rd and Pole Yard Rd intersections with hwy 1, support information from Staff Sgt Grabinsky, Revelstoke RCMP Detachment, for Business by Area Item, Director Brooks Hill

Importance: High

From: Director Brooks-Hill
Sent: Tuesday, December 18, 2018 4:21 PM
To: Lynda Shykora <LShykora@csrd.bc.ca>; Charles Hamilton <chamilton@csrd.bc.ca>
Subject: Fwd: Pine Rd and Pole Yard Rd intersections with hwy 1

Here are the stats from the RCMP regarding collisions at these intersections.

I have been told that ICBC May have more stats regarding other accidents that may not have been logged as collisions by the RCMP. I will try and contact them but probably won't have anything in time for the Board meeting.

Thanks,

David Brooks-Hill
 CSRD Area B Director

Begin forwarded message:

From: Kurt GRABINSKY
Subject: Re: Pine Rd and Pole Yard Rd intersections with hwy 1

Good day Mr. Brooks-Hill,

I can provide the following statistics from the Revelstoke Detachment Police Records Information Management Environment (PRIME):

2016 : zero reported or attended incidents in that region of the Trans Canada Highway
 2017 : 2 motor vehicle collisions - collisions at the intersection of either Pole Yard Road, Allen Frontage Road, Pine Road
 2018 : 2 motor vehicle collisions - collisions at the intersection of either Pole Yard Road, Allen Frontage Road, Pine Road
 Please advise if you require any further information.

Regards,

Staff Sergeant Kurt Grabinsky, B.A., B.Kin.
 Detachment Commander/ Chef de détachement
 Revelstoke RCMP Detachment / GRC de Revelstoke
 404 Campbell Avenue, PO Box 1480

Revelstoke, BC V0E 2S0

>>> Director Brooks-Hill <DBrooks-Hill@csrd.bc.ca> 2018/12/14 5:43 PM >>>

Hello,

Thank you very much for your help. I would like stats from the last 3 years and it would be good to also have related data from Pine rd and Pole yard rd as well as the trans-Canada intersections with Back rd and Allen Frontage rd as the school bus uses that loop.

Thank you for your suggestion to contact ICBC. I will do that as well.

Your help is very much appreciated!

Regards,

David Brooks-Hill
CSRD Area B Director

On Dec 13, 2018, at 15:47, Kurt GRABINSKY <kurt.grabinsky@rcmp-grc.gc.ca> wrote:

Good day Mr. Brooks-Hill,

Thank you for the request. I will set my staff to obtain the statistical information pertaining to collisions in the area you mentioned. Can you specifically advise the time-frame that you are seeking and are you only seeking information on the Trans-Canada Highway?

May I also suggest to contact ICBC to obtain their statistical information as well as suggestions, from their safety perspective, as to solutions for this area. They have been helpful in the design of the roundabout on Victoria road, other road projects and school zones.

Regards,

Staff Sergeant Kurt Grabinsky, B.A., B.Kin.
Detachment Commander/ Chef de détachement
Revelstoke RCMP Detachment / GRC de Revelstoke
404 Campbell Avenue, PO Box 1480
Revelstoke, BC V0E 2S0

>>> Director Brooks-Hill <DBrooks-Hill@csrd.bc.ca> 2018/12/13 3:16 PM >>>

Hello Mr Grabinsky,

I am writing to inform you that I will be bringing a motion to the CSRD Board on January 10, 2019 to resolve to lobby the Ministry of Transportation and Infrastructure to do something about the safety issues at this intersection. The suggestions would include lowering the speed limit to 60 or 80km/h from the City boundary to past these intersections, lighting and/or reflectors and signage marking the intersection.

As I am sure you are aware the traffic from the Pole Yard and snowmobile traffic from the various resorts and campgrounds in the area as well as school buses serving the area make this a dangerous entry and exit from the trans Canada highway.

I request if possible any traffic accident statistics you may have for the last several years regarding this area.

Thank you very much for your time.

Regards,

David Brooks-Hill

CSRD Area B Director

